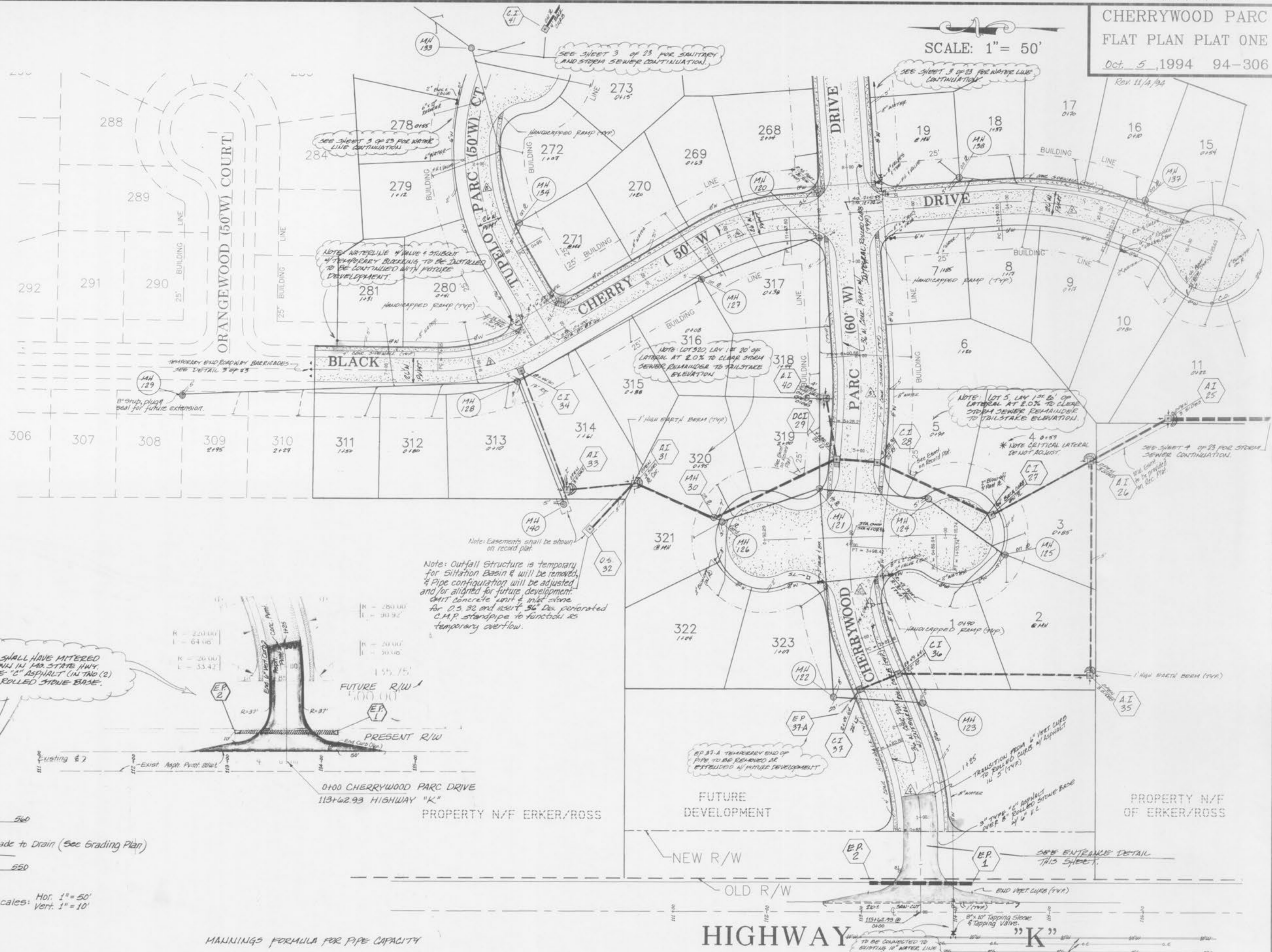


**CHERRYWOOD PARC
FLAT PLAN PLAT ONE**
Oct. 5, 1994 94-306
Rev. 11/4/94

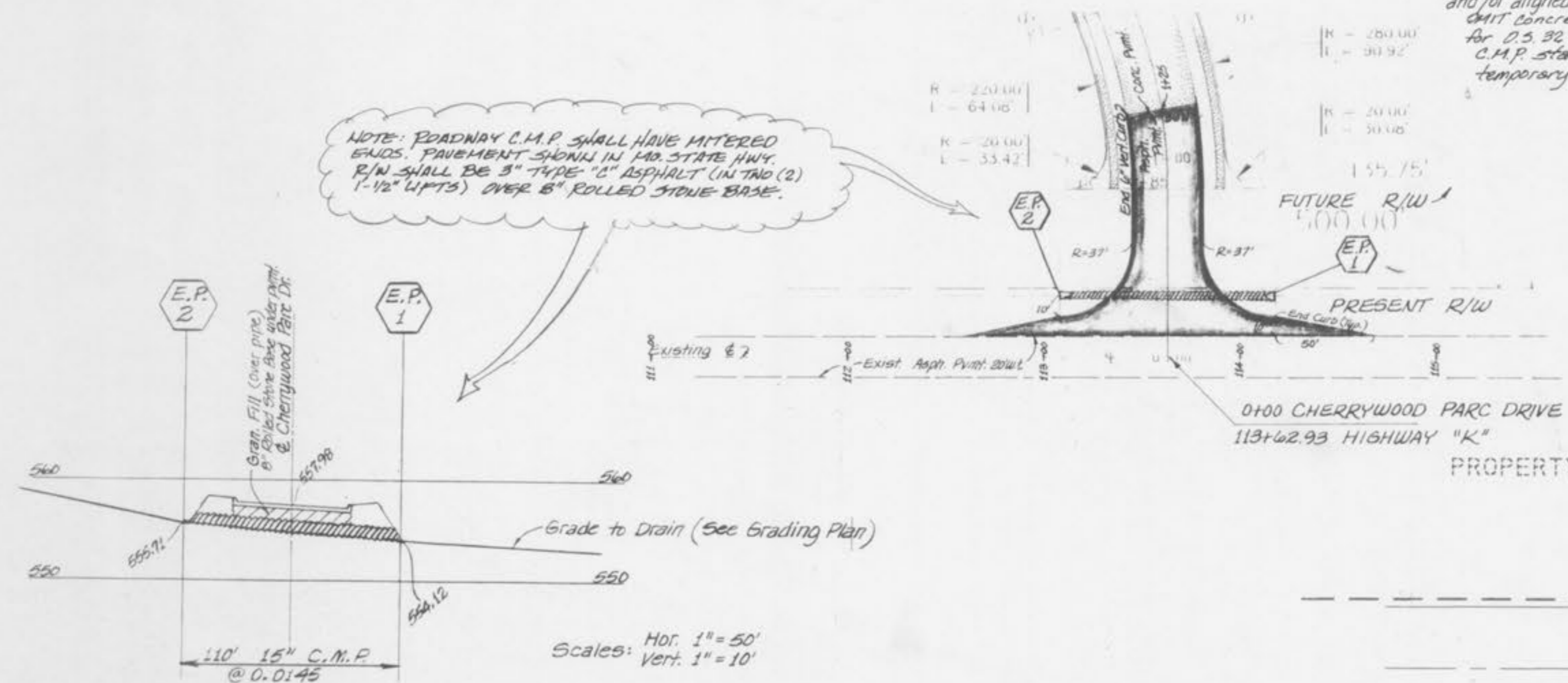
SCALE: 1" = 50'



CURVE DATA

CURVE#	RADIUS	LENGTH	DELTA
1	250.0'	97.86'	22° 25' 40"
2	250.0'	115.55'	26° 28' 56"
3	500.0'	72.44'	8° 18' 04"
4	400.0'	58.39'	8° 21' 50"
5	300.0'	127.61'	24° 22' 18"
6	200.0'	92.36'	26° 27' 33"
7	200.0'	109.51'	28° 38' 52"
8	225.00'	226.68'	57° 43' 25"

NOTE: ROADWAY C.M.P. SHALL HAVE MITERED ENDS. PAVEMENT SHALL BE 1 1/2" ASPHALT (IN TWO (2) 1/2" LIFTS) OVER 6" ROLLED STONE BASE.



ENTRANCE DETAIL

Scales: Hor. 1" = 50'
Vert. 1" = 10'

MANNING'S FORMULA FOR PIPE CAPACITY

$$\frac{1.486}{n} A R^{2/3} S^{1/2} = Q$$

$$\frac{1.486}{.015} (1.227)(.46)(.1204) = 4.22 \text{ c.f.s. CAPACITY}$$

$$0.84 \text{ Ac.} \times 3.0 = 2.52 \text{ c.f.s. DEMAND } Q$$

HIGHWAY

**CHERRYWOOD PARC
FLAT PLAN PLAT ONE**