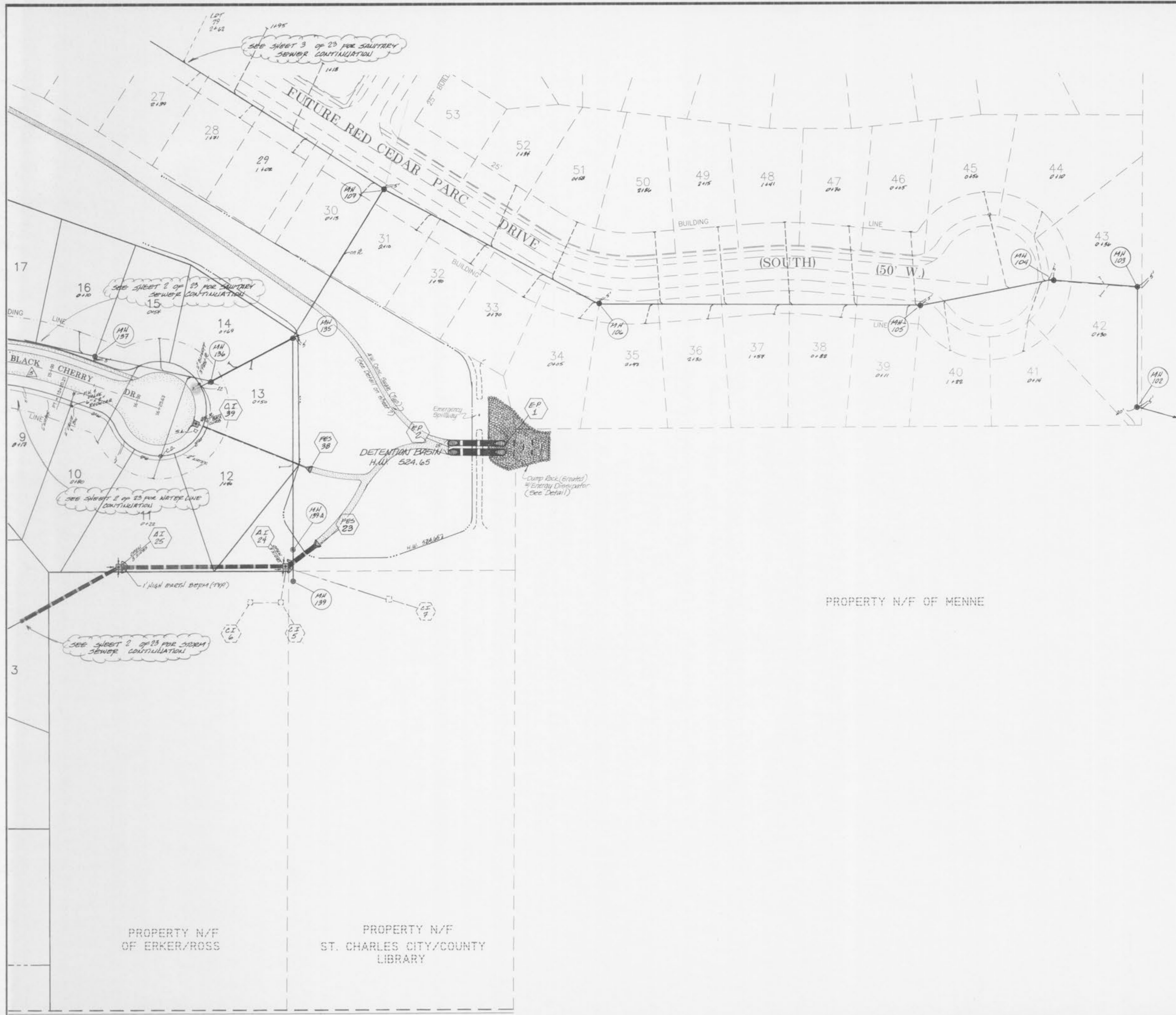


CHERRYWOOD PARC  
FLAT PLAN PLAT ONE

Oct. 5, 1994 94-306

Rev. 11/4/94

SCALE: 1" = 50'



Note: See sanitary sewer continuation on Sheet 10 of 23.

Property N/F of Kaplan

PROPERTY N/F OF MENNE

PROPERTY N/F OF ERKER/ROSS

PROPERTY N/F ST. CHARLES CITY/COUNTY LIBRARY

CHERRYWOOD PARC  
FLAT PLAN PLAT ONE

REVISED	SHEET 4 OF 23
	ST. CHARLES ENGINEERING & SURVEYING
	801 S. FIFTH STREET, SUITE 202
	ST. CHARLES, MO 63301
	TEL: (314) 947-0607 FAX: (314) 947-2448
ORDER NO. 94-306	DATE 10/15/94