

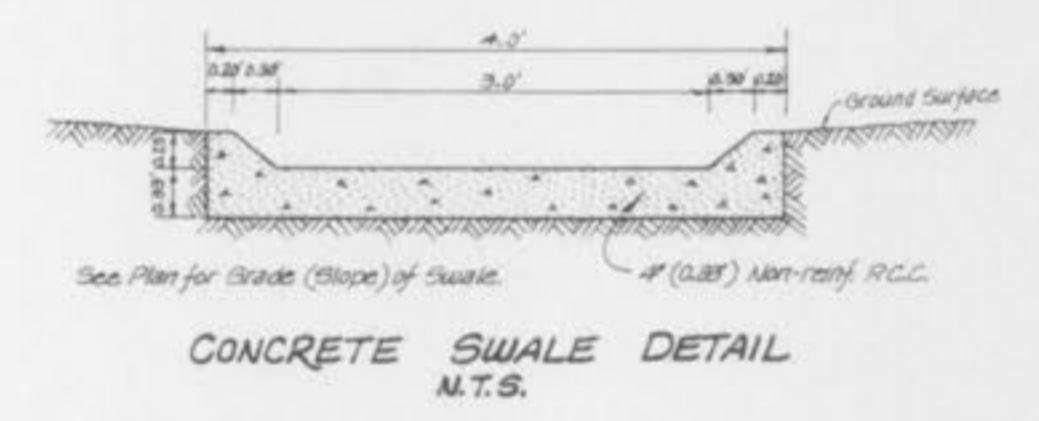
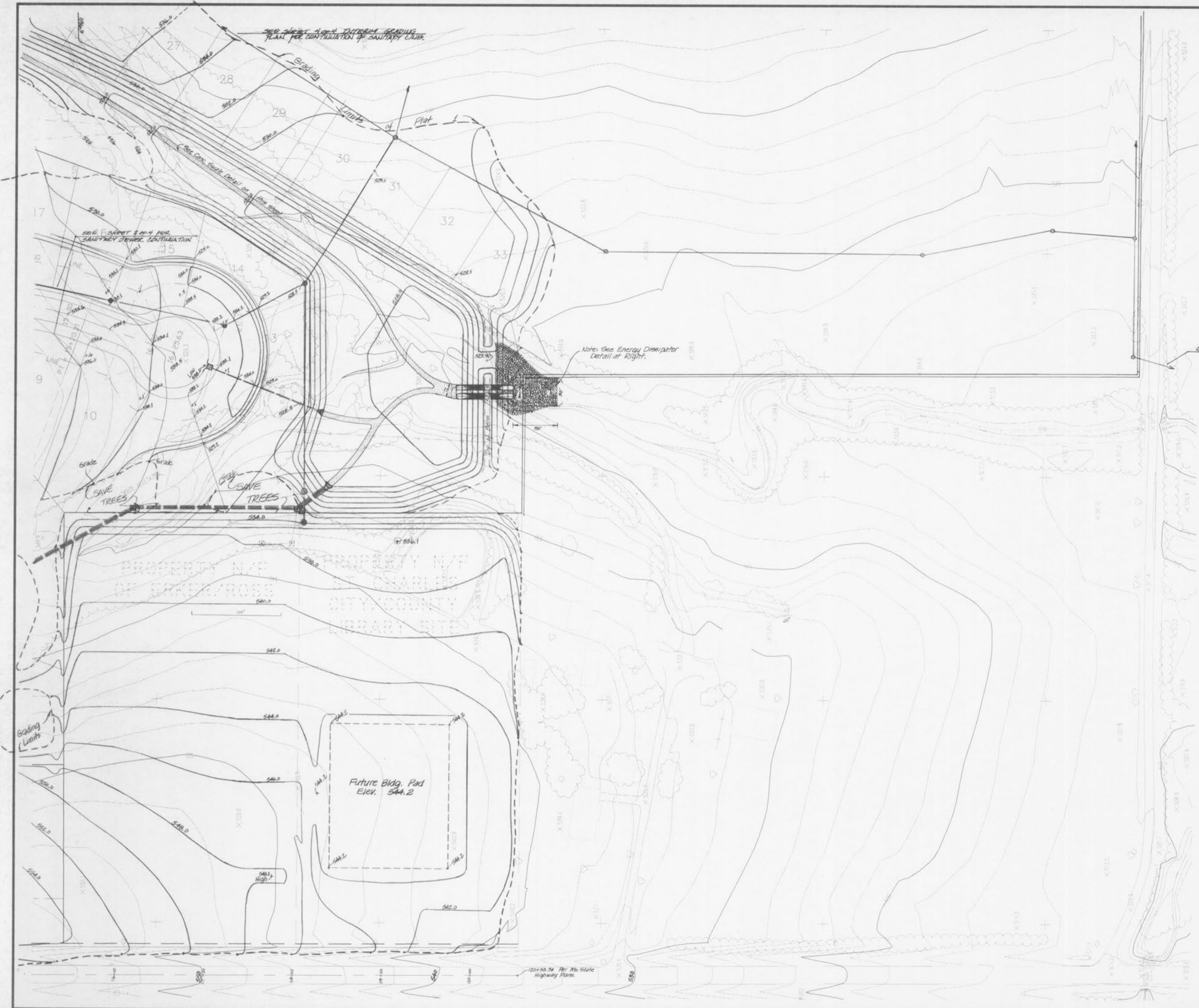
CHERRYWOOD PARC INTERIM GRADING PLAN

Aug. 22, 1994 94-306

Rev. Oct. 5, 1994
Rev. 11/4/94



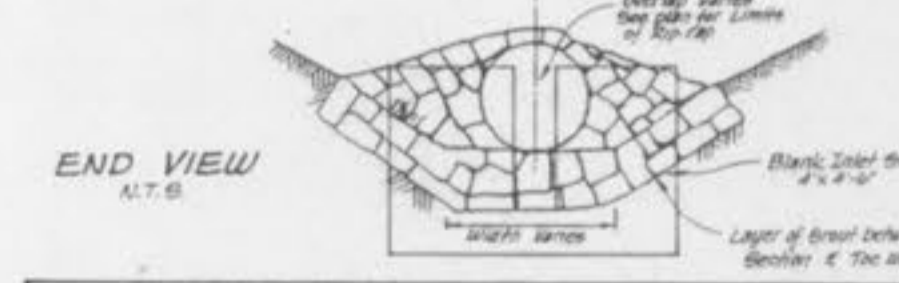
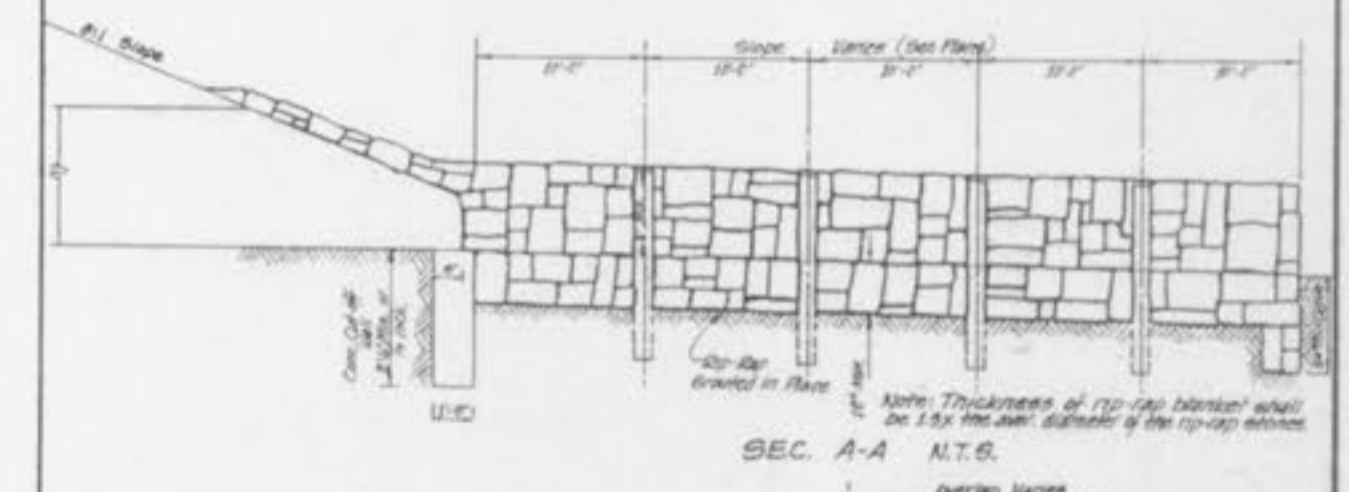
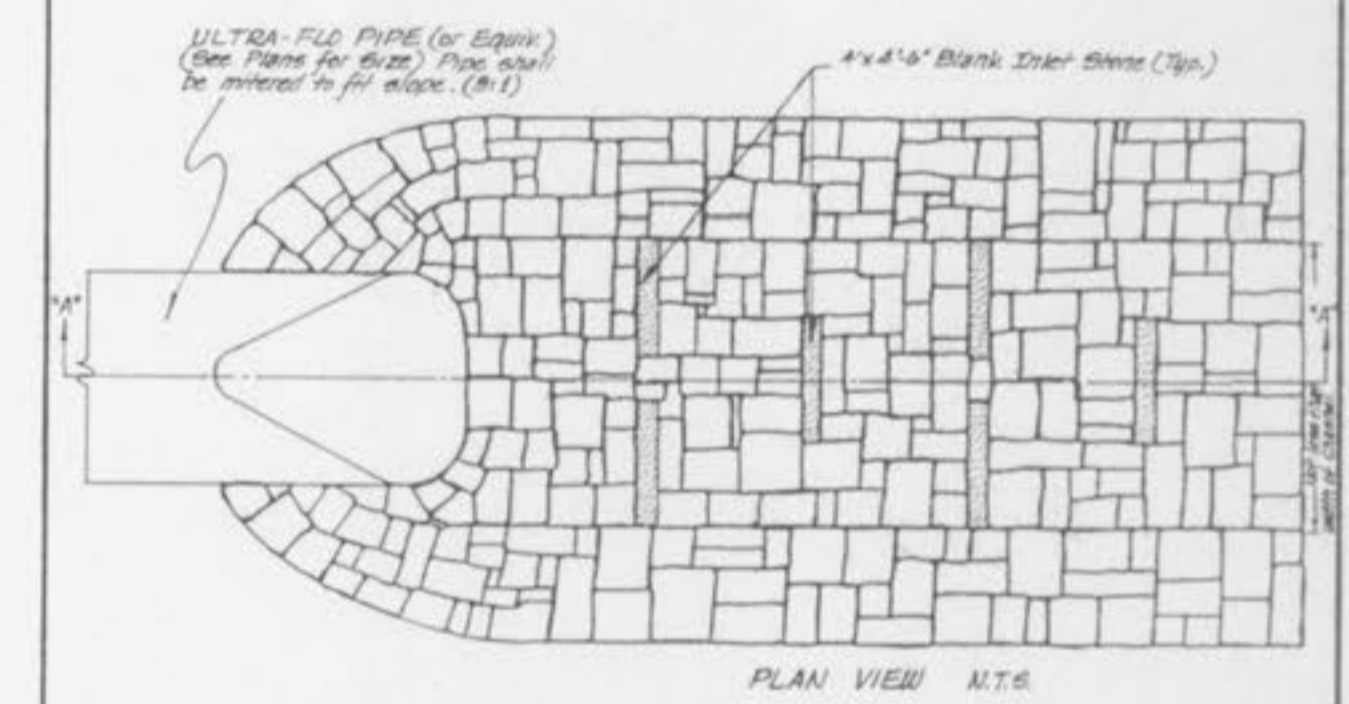
SCALE: 1" = 50'



CONCRETE SWALE DETAIL
N.T.S.

OFF-SITE SANITARY SEWER LINE

ENERGY DISSIPATOR DETAIL FOR LARGE DIA. PIPES



S C ST. CHARLES ENGINEERING & SURVEYING
E S 801 South Fifth Street, Suite 202
St. Charles, Missouri 63301
Off. 947-0607, Fax 947-2448

CHERRYWOOD PARC GRADING PLAN

REVISED	SHEET 7 OF 23
S C ST. CHARLES ENGINEERING & SURVEYING	ORDER NO. 94-306
801 S. FIFTH STREET, SUITE 202	DATE
ST. CHARLES, MO 63301	08-05/94
TEL. 947-0607 FAX 947-2448	