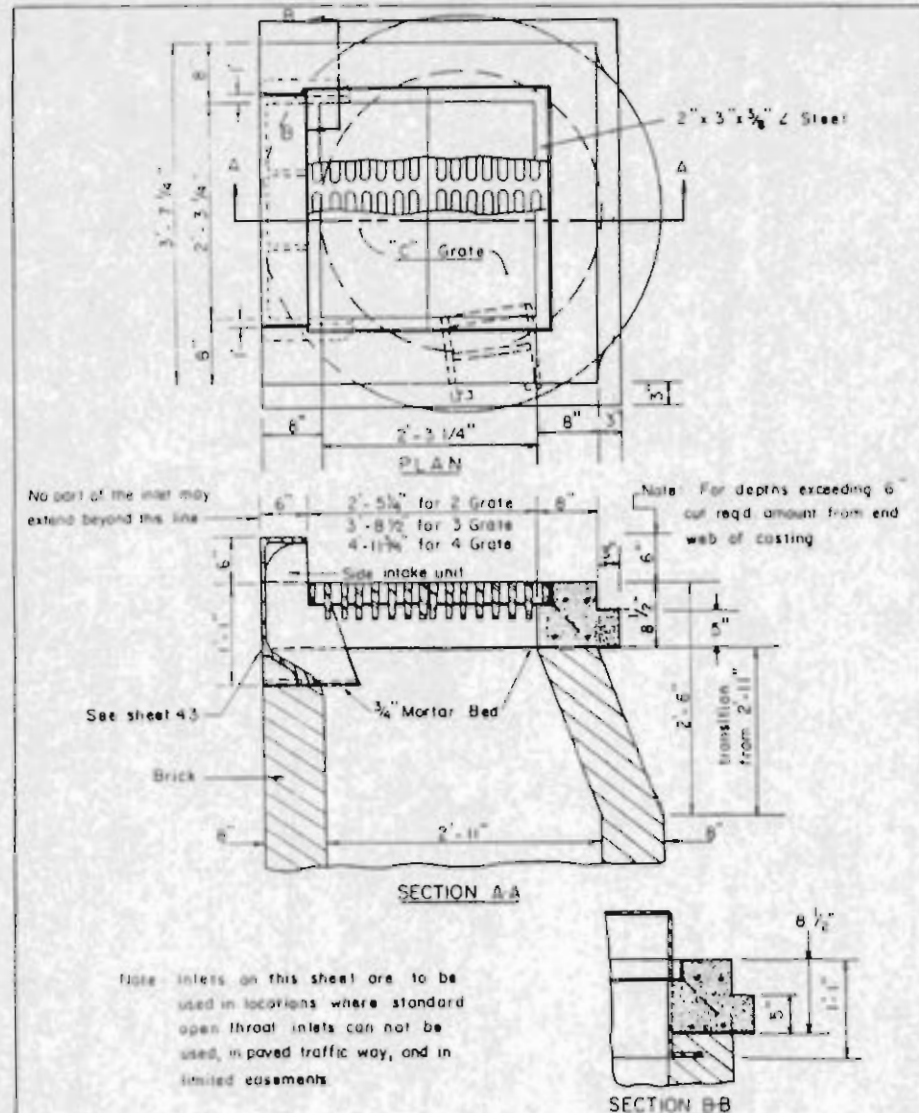
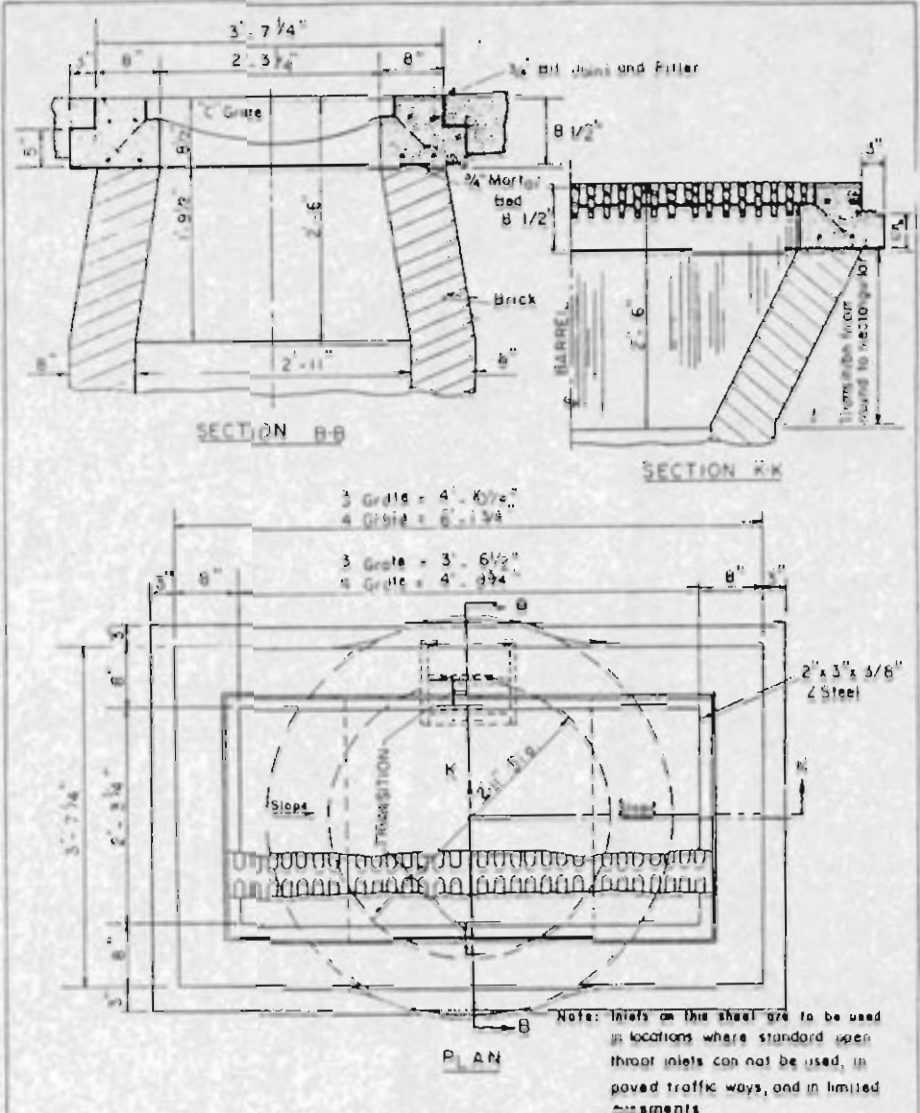


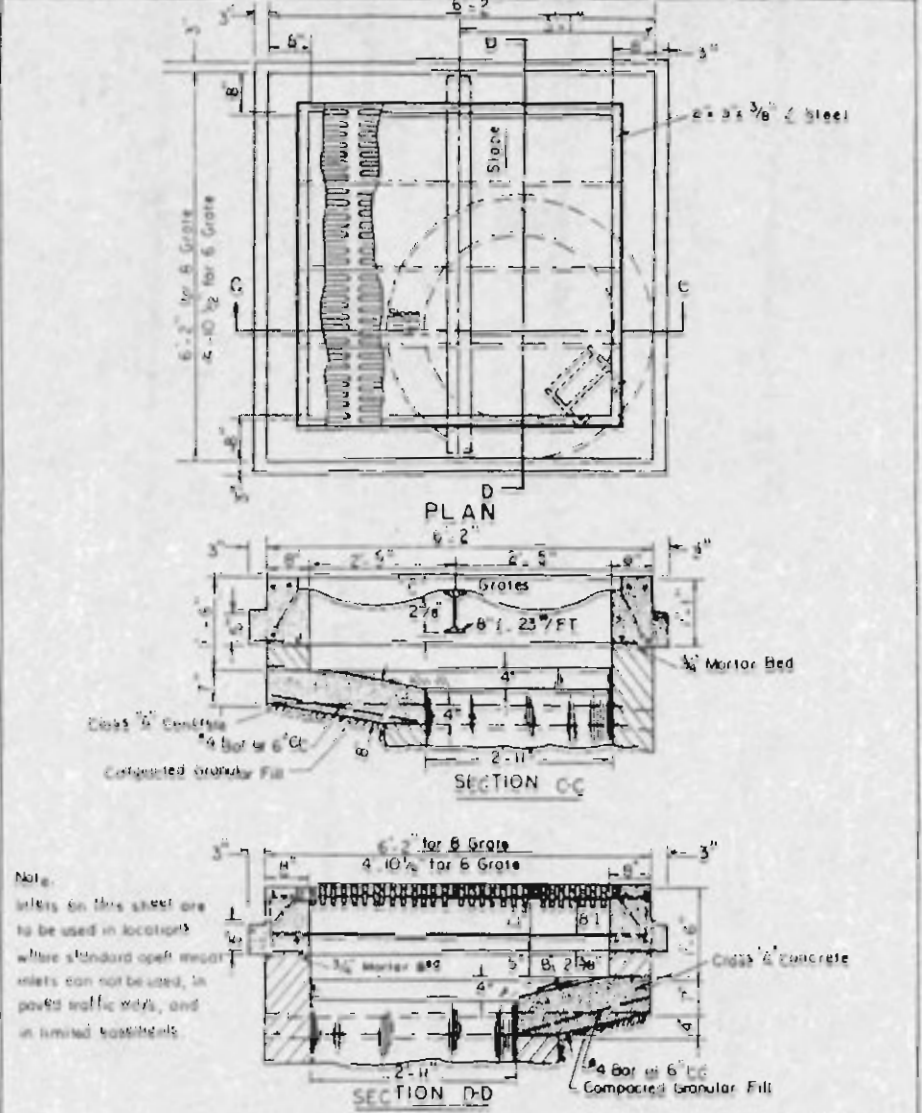
2 GRATE INLET METROPOLITAN ST. LOUIS SEWER DISTRICT  
Standard Details of Sewer Construction  
Dr. R.P.P. Ch. J.H.S. June 1984 Sheet 34



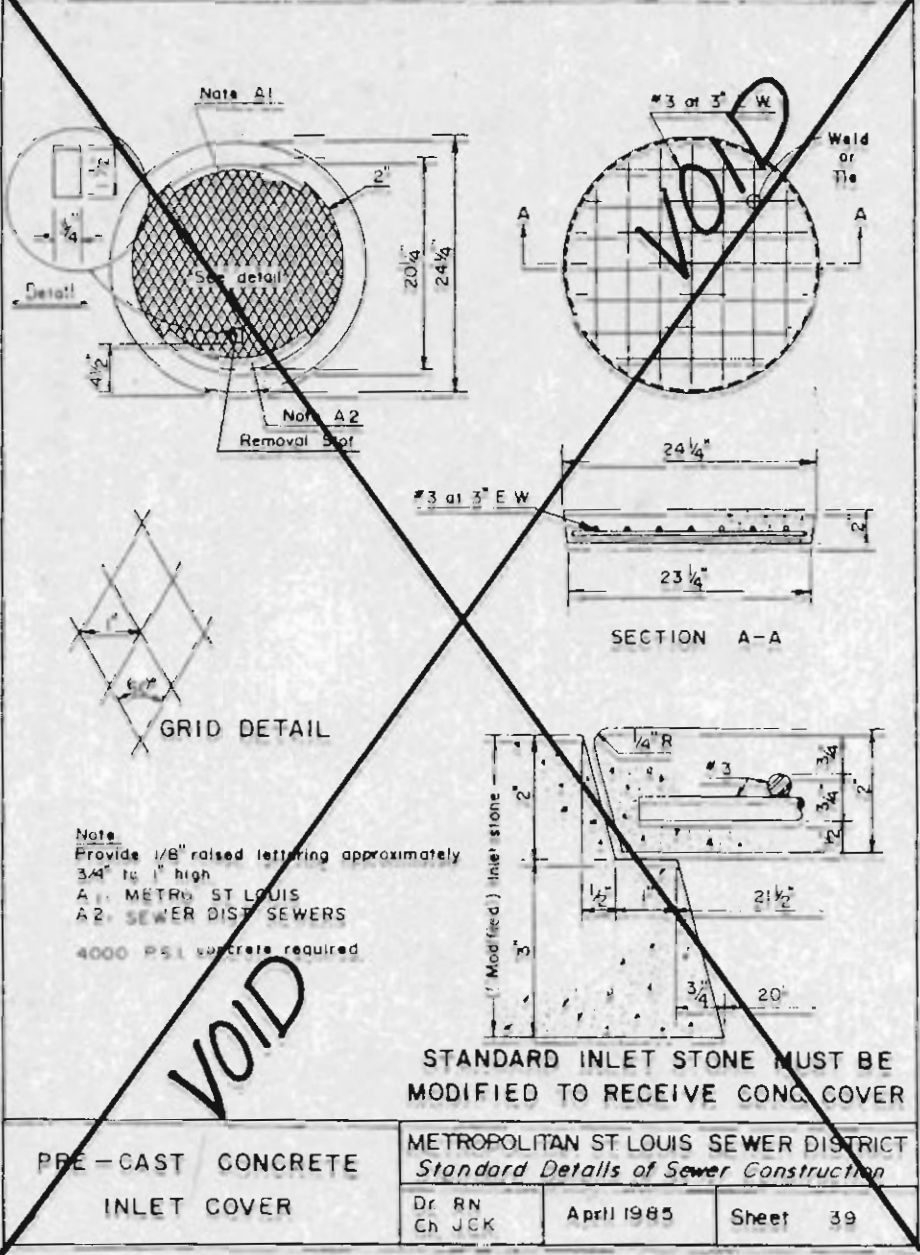
2 GRATE INLET WITH SIDE INTAKE UNIT METROPOLITAN ST. LOUIS SEWER DISTRICT  
Standard Details of Sewer Construction  
Dr. R.P.P. Ch. J.H.S. June 1985 Sheet 35



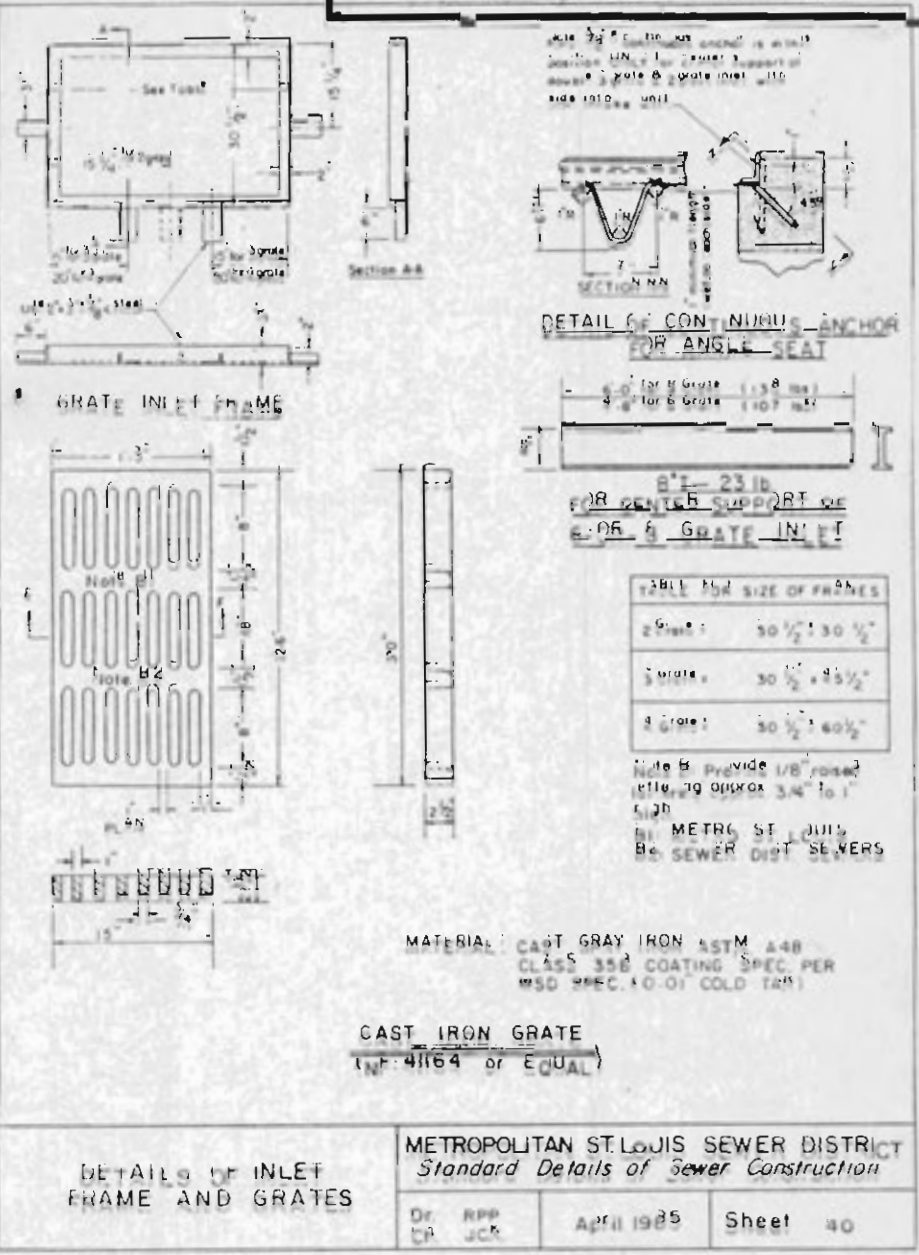
3 B 4 GRATE INLET METROPOLITAN ST. LOUIS SEWER DISTRICT  
Standard Details of Sewer Construction  
Dr. R.P.P. Ch. J.H.S. June 1985 Sheet 36



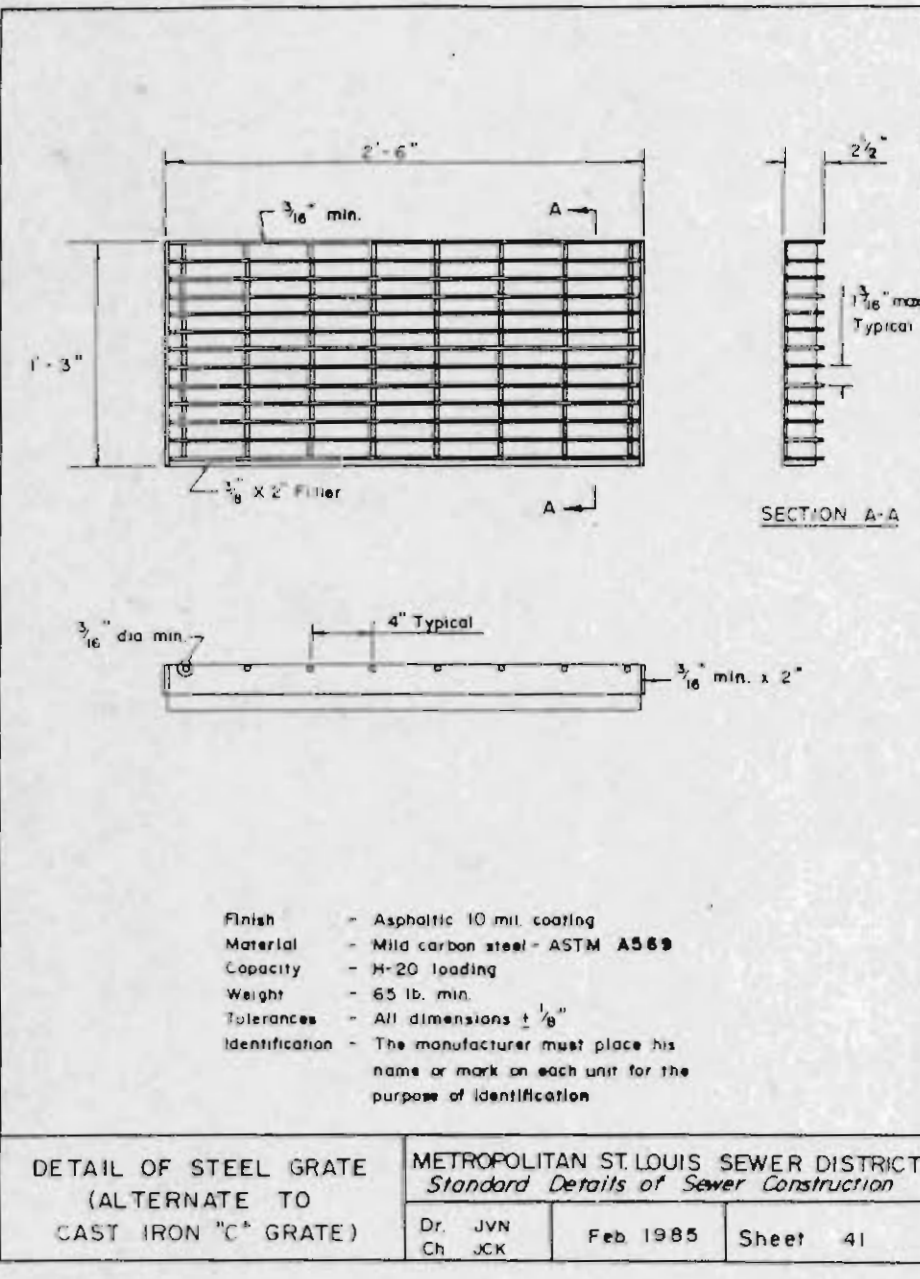
6 B 8 GRATE INLET METROPOLITAN ST. LOUIS SEWER DISTRICT  
Standard Details of Sewer Construction  
Dr. R.P.P. Ch. J.H.S. Feb. 1989 Sheet 37



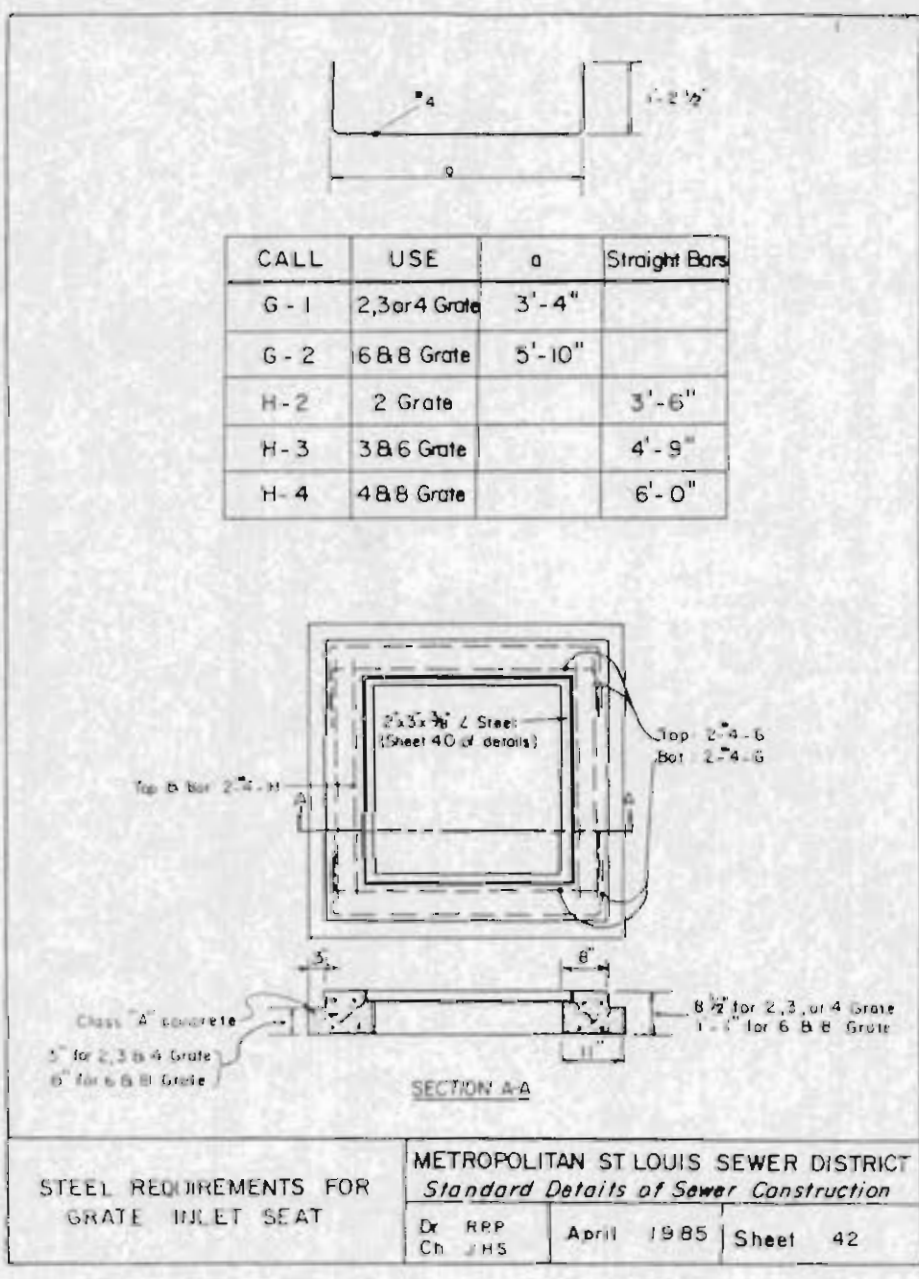
PRE-CAST CONCRETE INLET COVER METROPOLITAN ST. LOUIS SEWER DISTRICT  
Standard Details of Sewer Construction  
Dr. R.N. Ch. J.C.K. April 1985 Sheet 39



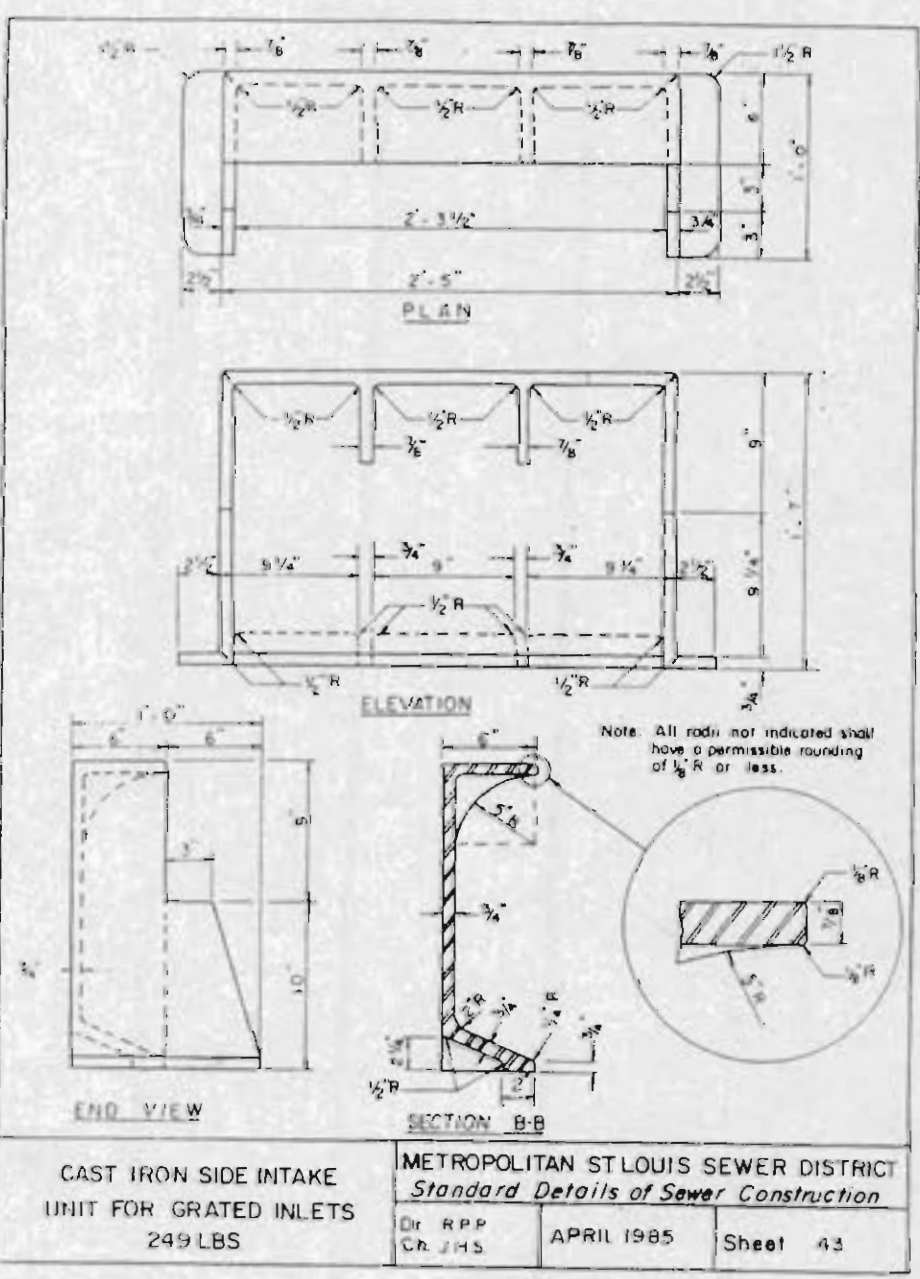
DETAILS OF INLET FRAME AND GRATES METROPOLITAN ST. LOUIS SEWER DISTRICT  
Standard Details of Sewer Construction  
Dr. R.P.P. Ch. J.H.S. April 1985 Sheet 40



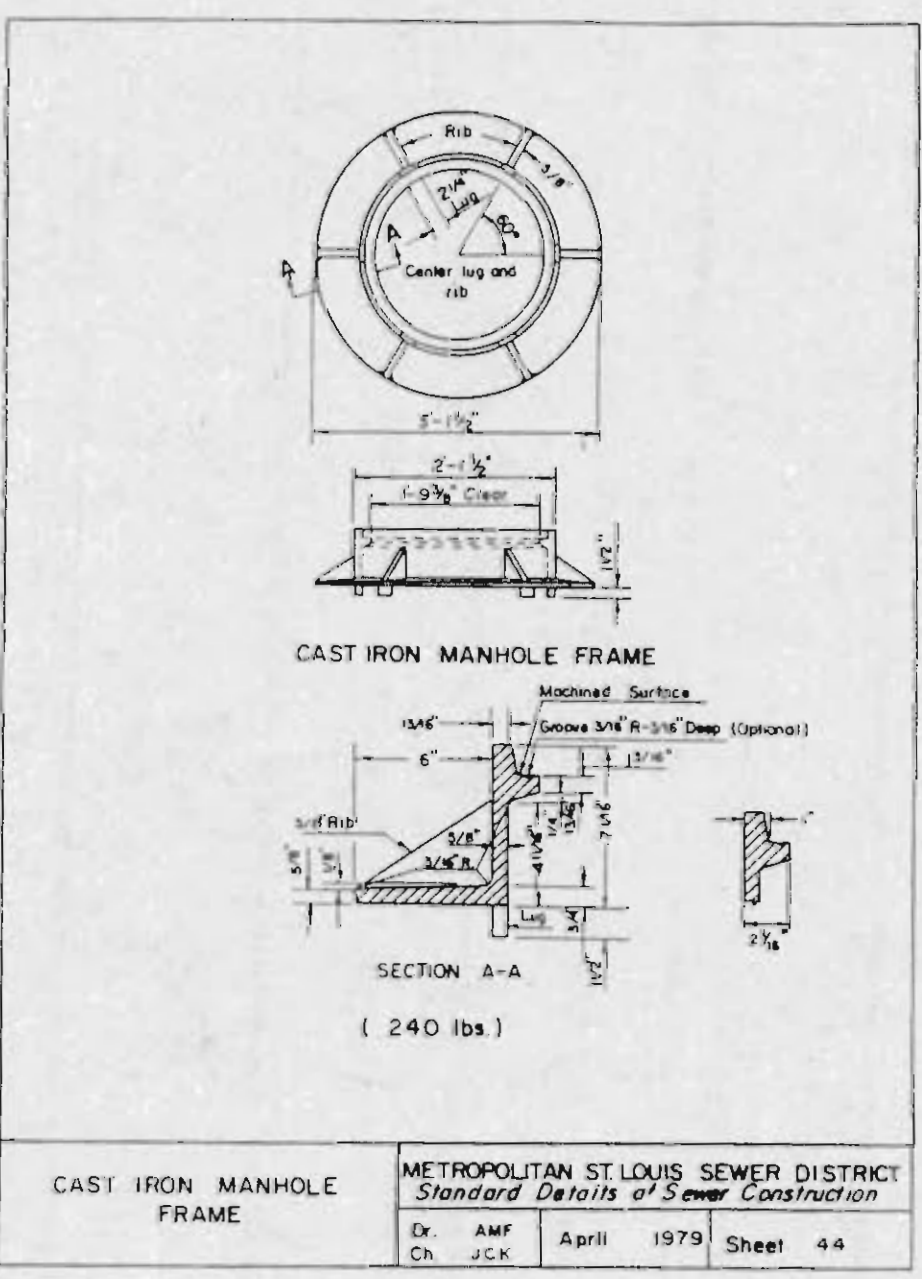
DETAIL OF STEEL GRATE (ALTERNATE TO CAST IRON "C" GRATE) METROPOLITAN ST. LOUIS SEWER DISTRICT  
Standard Details of Sewer Construction  
Dr. J.V.N. Ch. J.C.K. Feb. 1985 Sheet 41



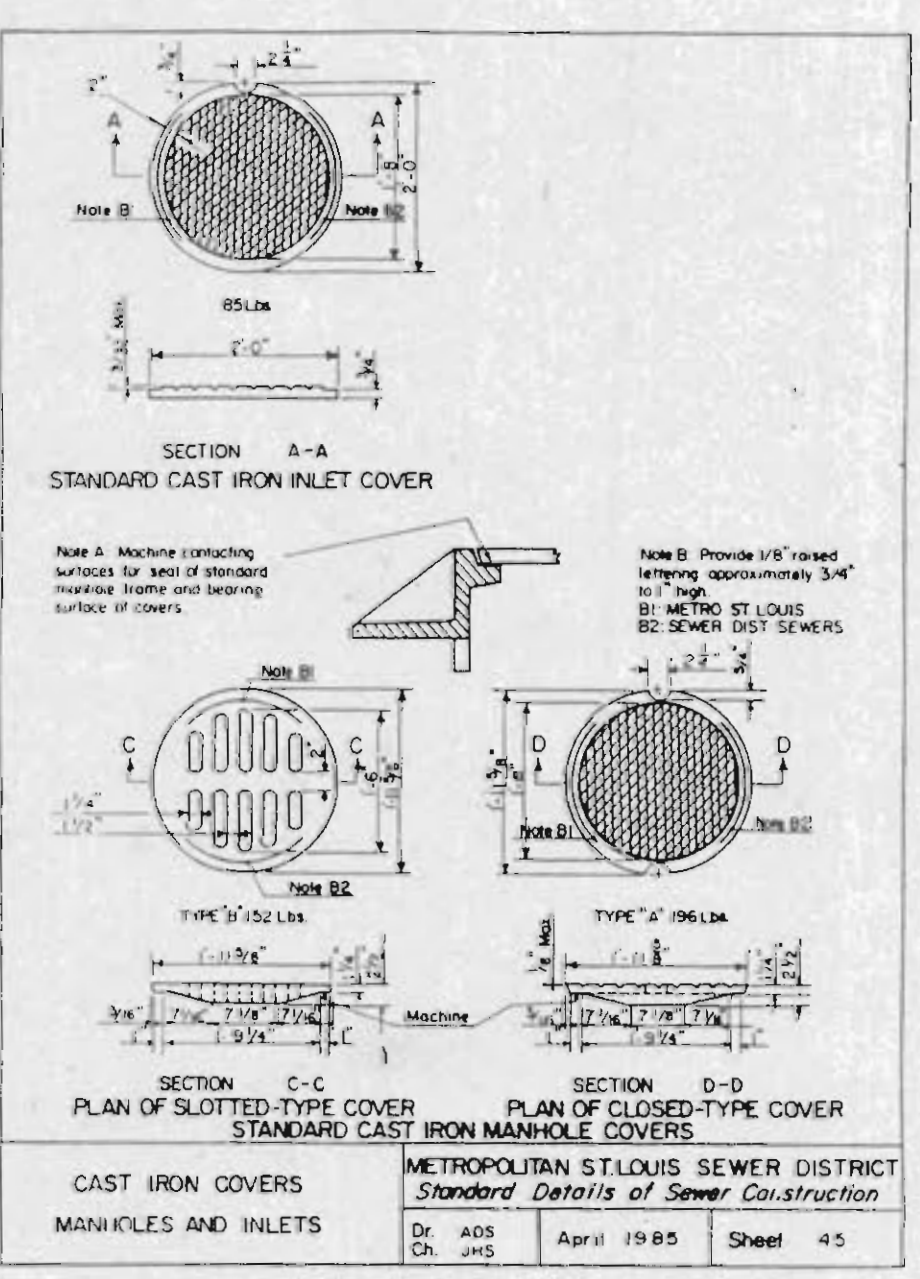
STEEL REQUIREMENTS FOR GRATE INLET SEAT METROPOLITAN ST. LOUIS SEWER DISTRICT  
Standard Details of Sewer Construction  
Dr. R.P.P. Ch. J.H.S. April 1985 Sheet 42



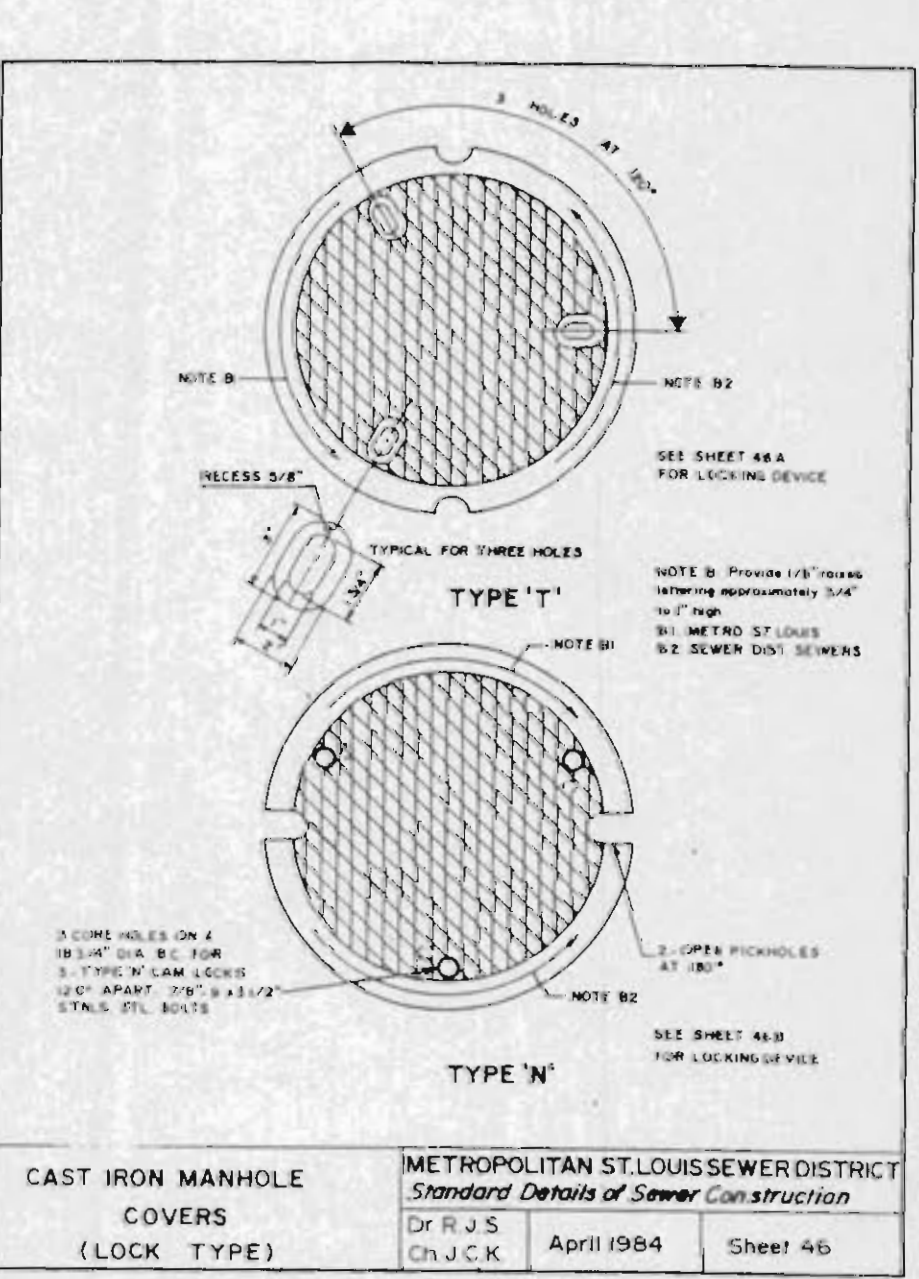
CAST IRON SIDE INTAKE UNIT FOR GRATED INLETS 249 LBS METROPOLITAN ST. LOUIS SEWER DISTRICT  
Standard Details of Sewer Construction  
Dr. R.P.P. Ch. J.H.S. April 1985 Sheet 43



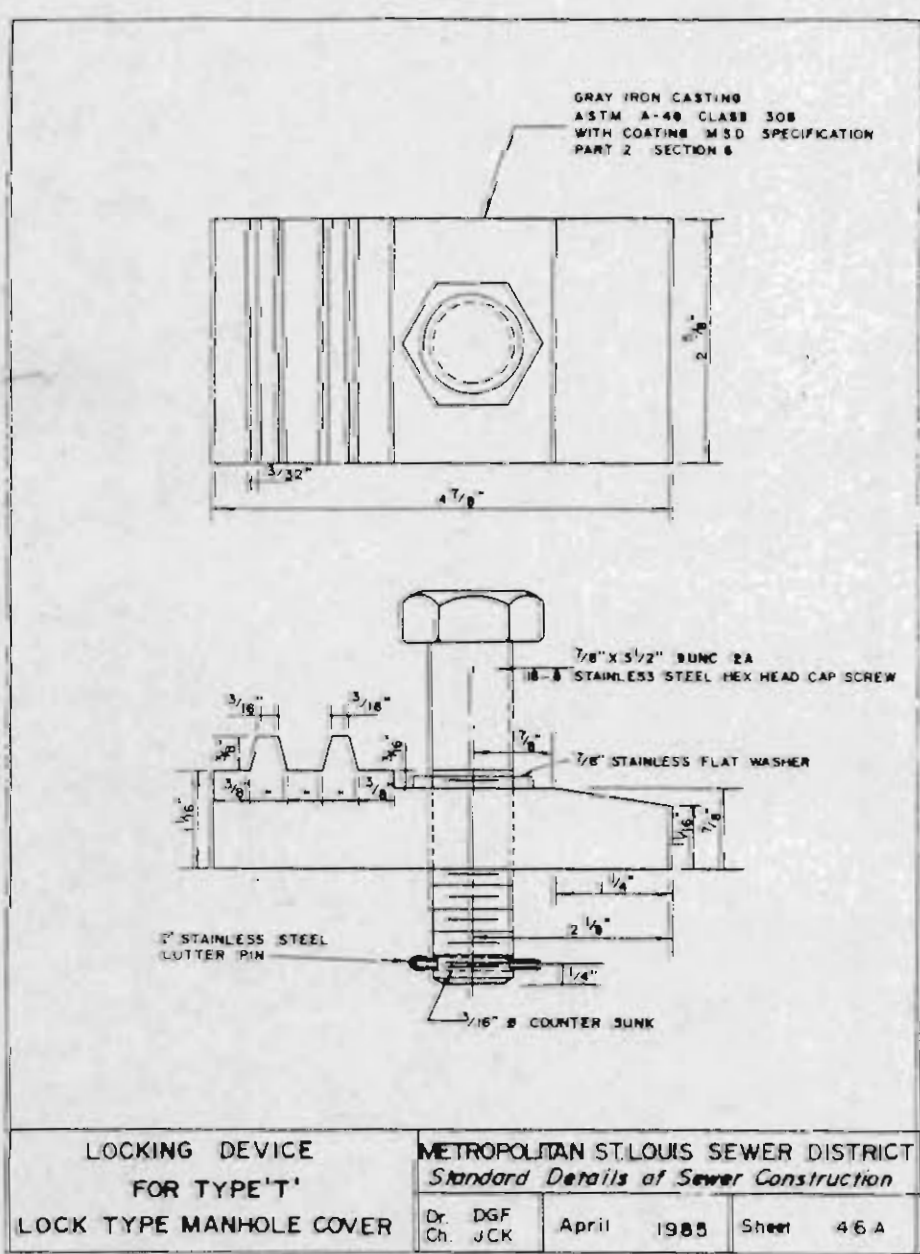
CAST IRON MANHOLE FRAME METROPOLITAN ST. LOUIS SEWER DISTRICT  
Standard Details of Sewer Construction  
Dr. A.M.F. Ch. J.C.K. April 1979 Sheet 44



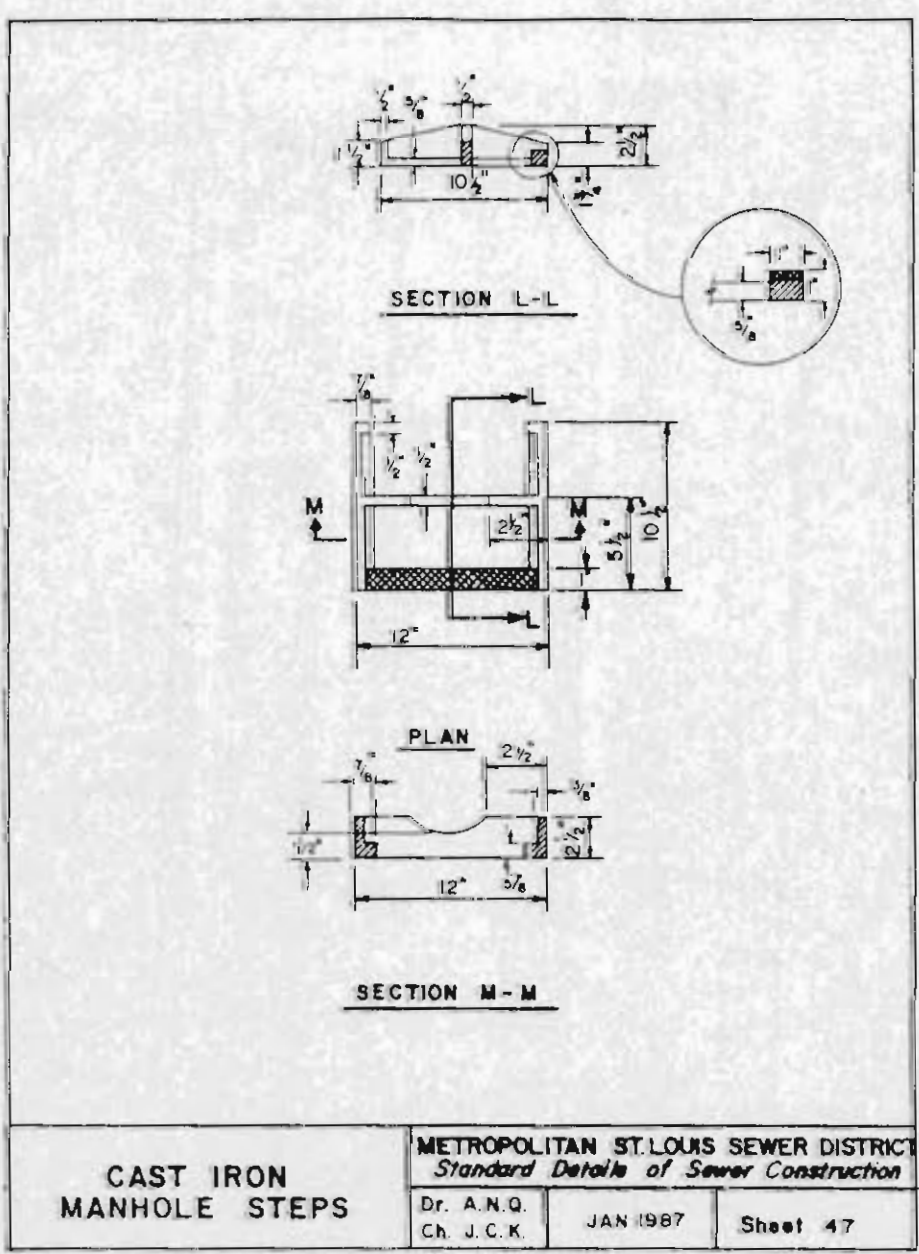
CAST IRON COVERS MANHOLES AND INLETS METROPOLITAN ST. LOUIS SEWER DISTRICT  
Standard Details of Sewer Construction  
Dr. A.D.S. Ch. J.H.S. April 1985 Sheet 45



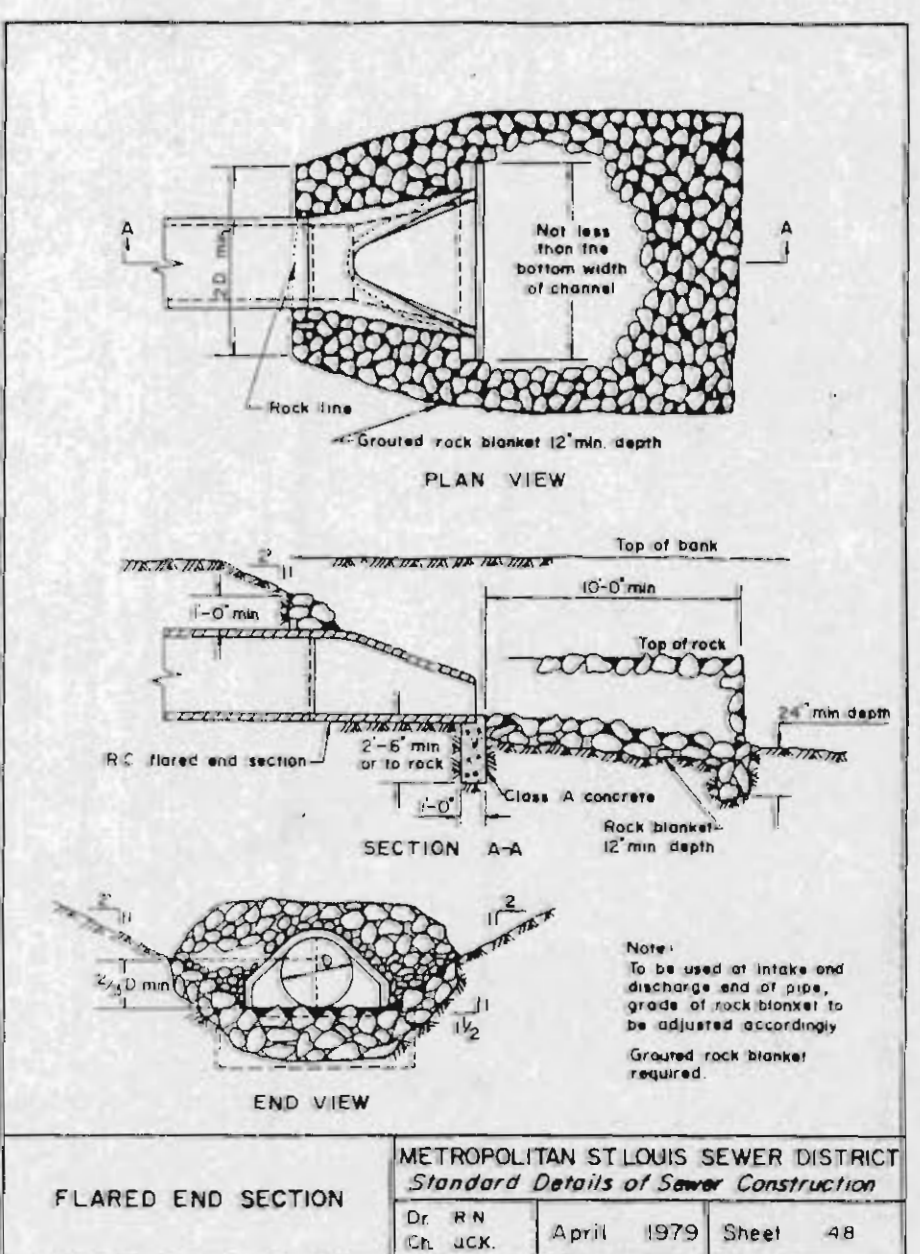
CAST IRON MANHOLE COVERS (LOCK TYPE) METROPOLITAN ST. LOUIS SEWER DISTRICT  
Standard Details of Sewer Construction  
Dr. R.J.S. Ch. J.C.K. April 1984 Sheet 46



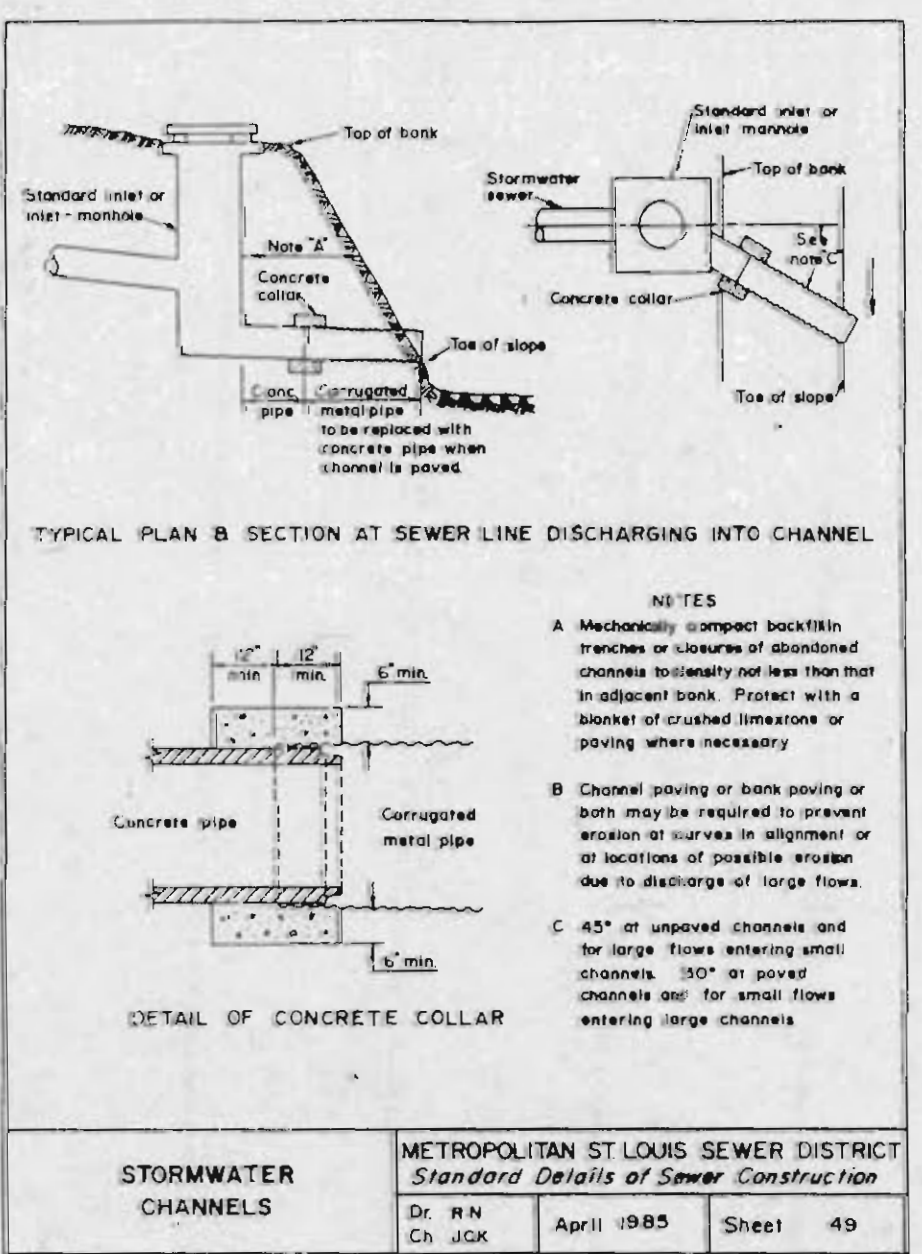
LOCKING DEVICE FOR TYPE "T" LOCK TYPE MANHOLE COVER METROPOLITAN ST. LOUIS SEWER DISTRICT  
Standard Details of Sewer Construction  
Dr. D.P. Ch. J.C.K. April 1985 Sheet 46A



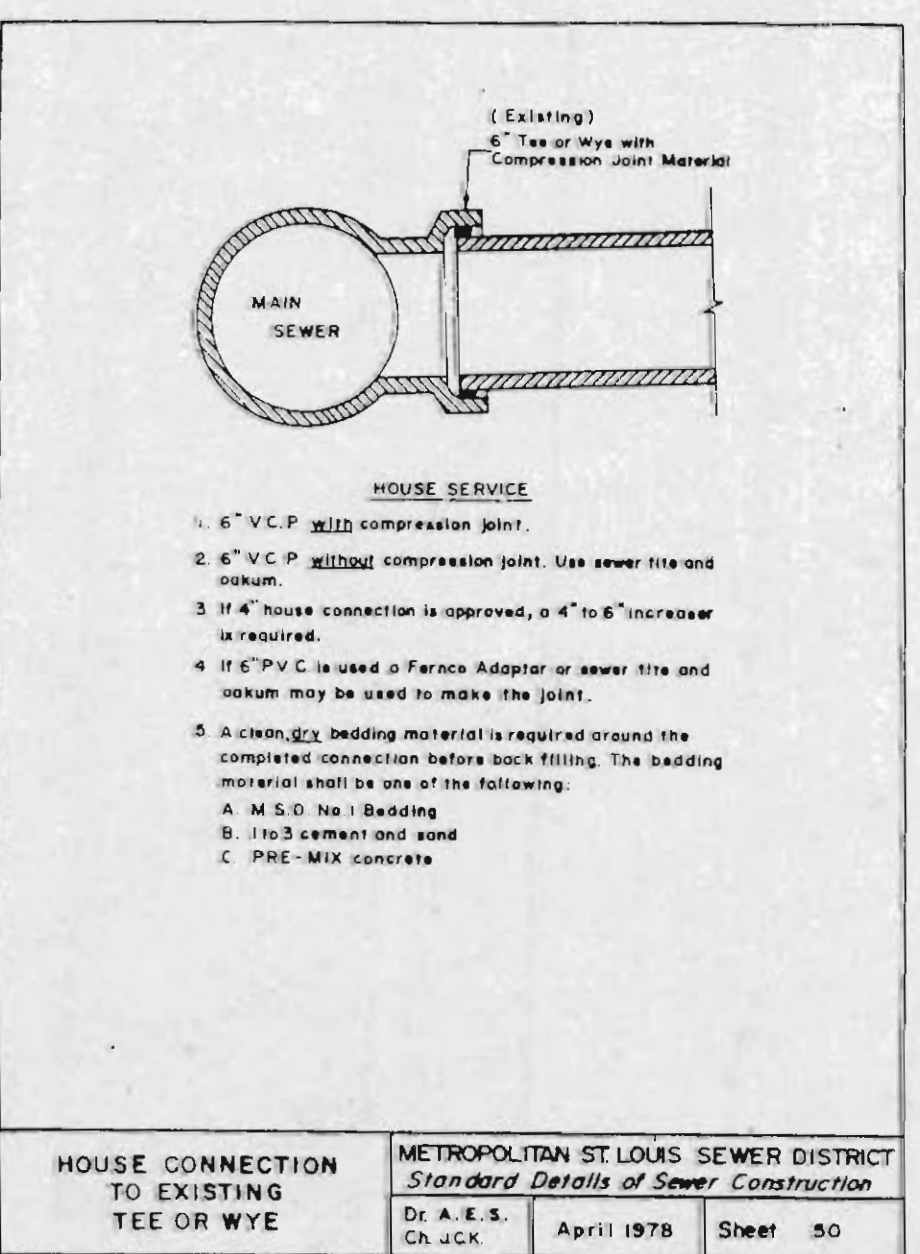
CAST IRON MANHOLE STEPS METROPOLITAN ST. LOUIS SEWER DISTRICT  
Standard Details of Sewer Construction  
Dr. A.N.D. Ch. J.C.K. JAN 1987 Sheet 47



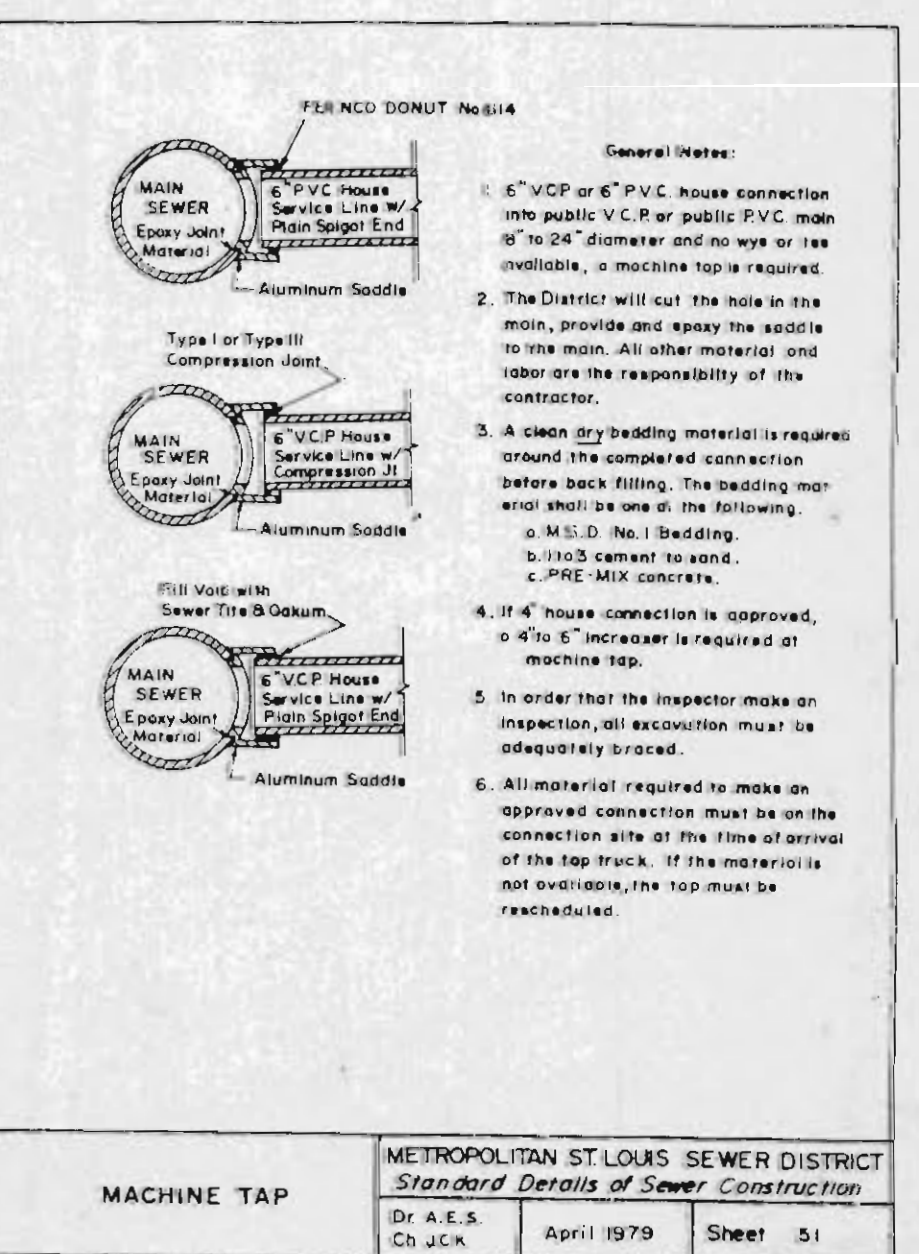
FLARED END SECTION METROPOLITAN ST. LOUIS SEWER DISTRICT  
Standard Details of Sewer Construction  
Dr. R.N. Ch. J.C.K. April 1979 Sheet 48



STORMWATER CHANNELS METROPOLITAN ST. LOUIS SEWER DISTRICT  
Standard Details of Sewer Construction  
Dr. R.N. Ch. J.C.K. April 1985 Sheet 49



HOUSE CONNECTION TO EXISTING TEE OR WYE METROPOLITAN ST. LOUIS SEWER DISTRICT  
Standard Details of Sewer Construction  
Dr. A.E.S. Ch. J.C.K. April 1978 Sheet 50



MACHINE TAP METROPOLITAN ST. LOUIS SEWER DISTRICT  
Standard Details of Sewer Construction  
Dr. A.E.S. Ch. J.C.K. April 1979 Sheet 51