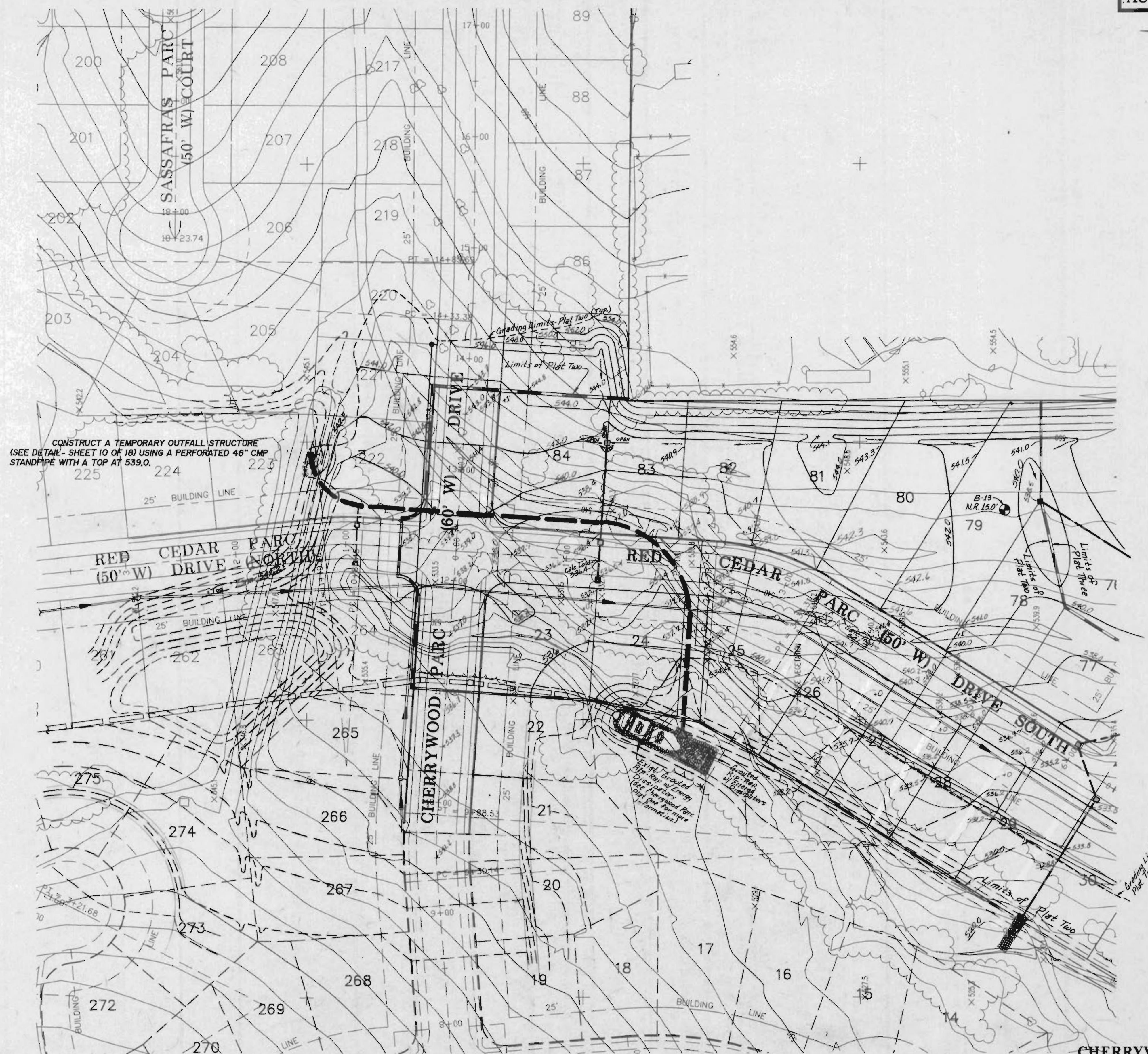


CHERRYWOOD PARC
PLAT TWO & PLAT THREE
GRADING PLAN
AUG. 7, 1995 94-306



CONSTRUCT A TEMPORARY OUTFALL STRUCTURE
(SEE DETAIL - SHEET 10 OF 18) USING A PERFORATED 48" CMP
STANDPIPE WITH A TOP AT 539.0.

CHERRYWOOD PARC
PLAT TWO & PLAT THREE
GRADING PLAN

REVISED 9/4/95, 9/29/95, 11/6/95		SHEET 4 OF 19	
S C E S	ST. CHARLES ENGINEERING & SURVEYING		
	801 S. FIFTH STREET, SUITE 202		
	ST. CHARLES, MO 63301		
	TEL: (314) 947-0607	FAX: (314) 947-2448	DATE: 8/7/95