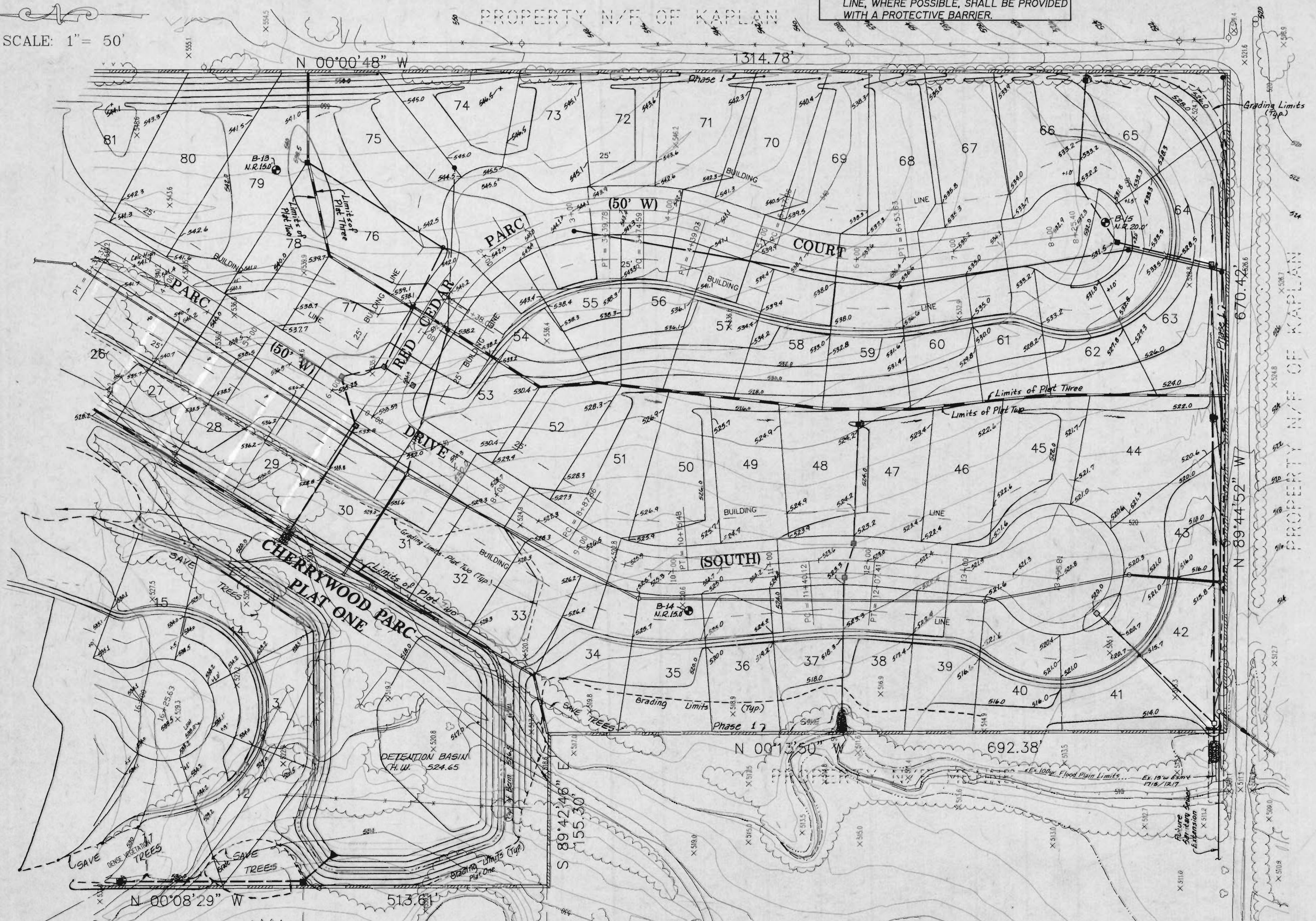


SCALE: 1" = 50'

NOTE!
ALL TREES TO BE SAVED ALONG PROPERTY LINE, WHERE POSSIBLE, SHALL BE PROVIDED WITH A PROTECTIVE BARRIER.

CHERRYWOOD PARC
PLAT TWO & PLAT THREE
GRADING PLAN
AUG. 7, 1995 94-306



PROPERTY N/F
OF ERKER/ROSS

PROPERTY N/F
ST. CHARLES
CITY/COUNTY
LIBRARY SITE

CHERRYWOOD PARC
PLAT TWO & PLAT THREE
GRADING PLAN

REVISED 9/1/95, 9/29/95, 11/6/95	SHEET 5 OF 19
S C ST. CHARLES ENGINEERING & SURVEYING	ORDER NO. 94-306
801 S. FIFTH STREET, SUITE 202	DATE 8/7/95
ST. CHARLES, MO 63301	
TEL(314) 547-0607 FAX(314) 947-2448	