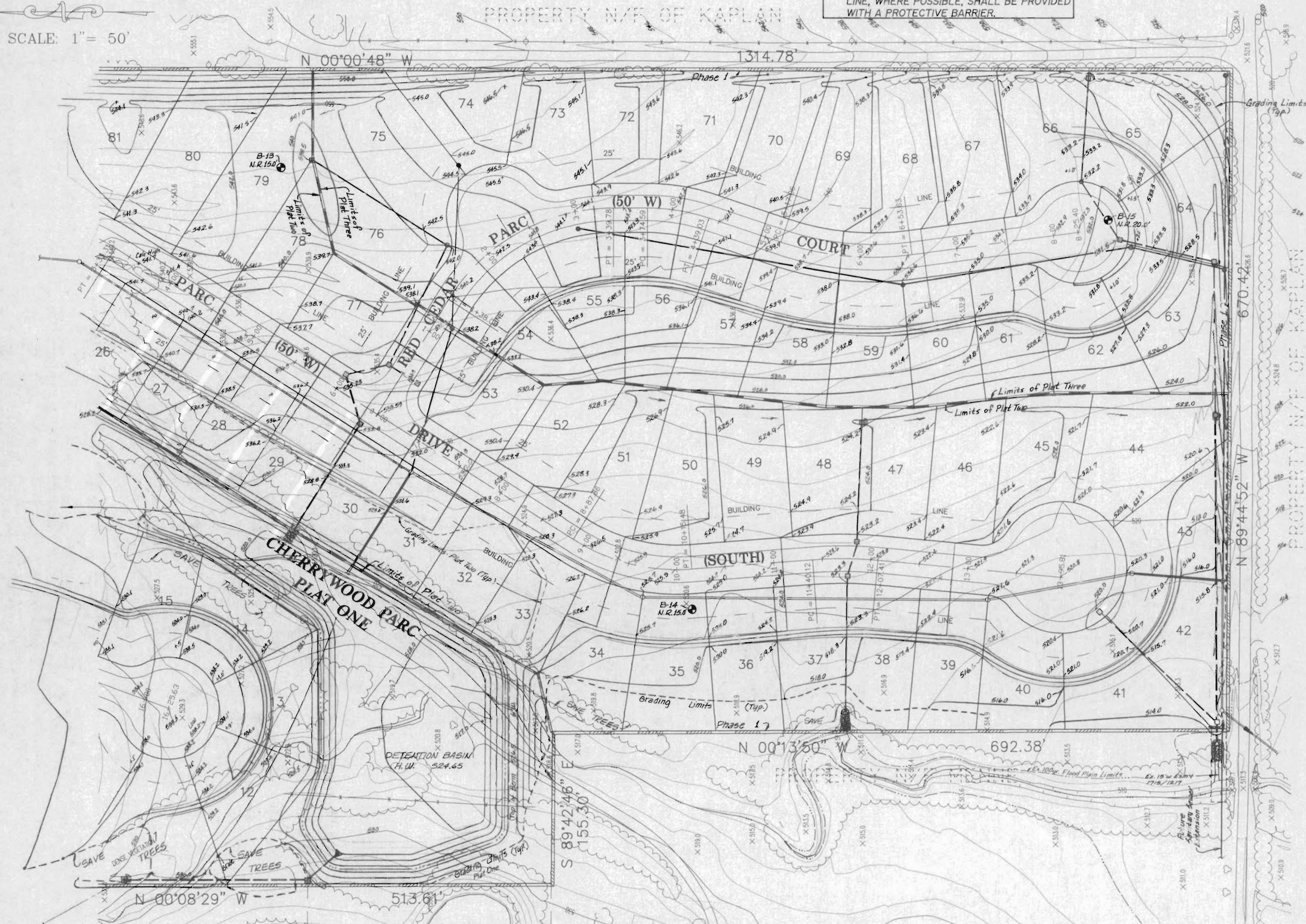


SCALE: 1" = 50'

NOTE!  
ALL TREES TO BE SAVED ALONG PROPERTY LINE, WHERE POSSIBLE, SHALL BE PROVIDED WITH A PROTECTIVE BARRIER.

CHERRYWOOD PARC  
PLAT THREE  
GRADING PLAN  
Dec. 27, 1995 94-306



PROPERTY N/F  
OF ERKER/ROSS

PROPERTY N/F  
ST. CHARLES  
CITY/COUNTY  
LIBRARY SITE

CHERRYWOOD PARC  
PLAT THREE  
GRADING PLAN

REVISED	SHEET 3 OF 13
	ST. CHARLES ENGINEERING & SURVEYING
	801 S. FIFTH STREET, SUITE 202
	ST. CHARLES, MO 63301
	TEL: (314) 947-0607 FAX: (314) 947-2445
ORDER NO.	94-306
DATE	12/27/95