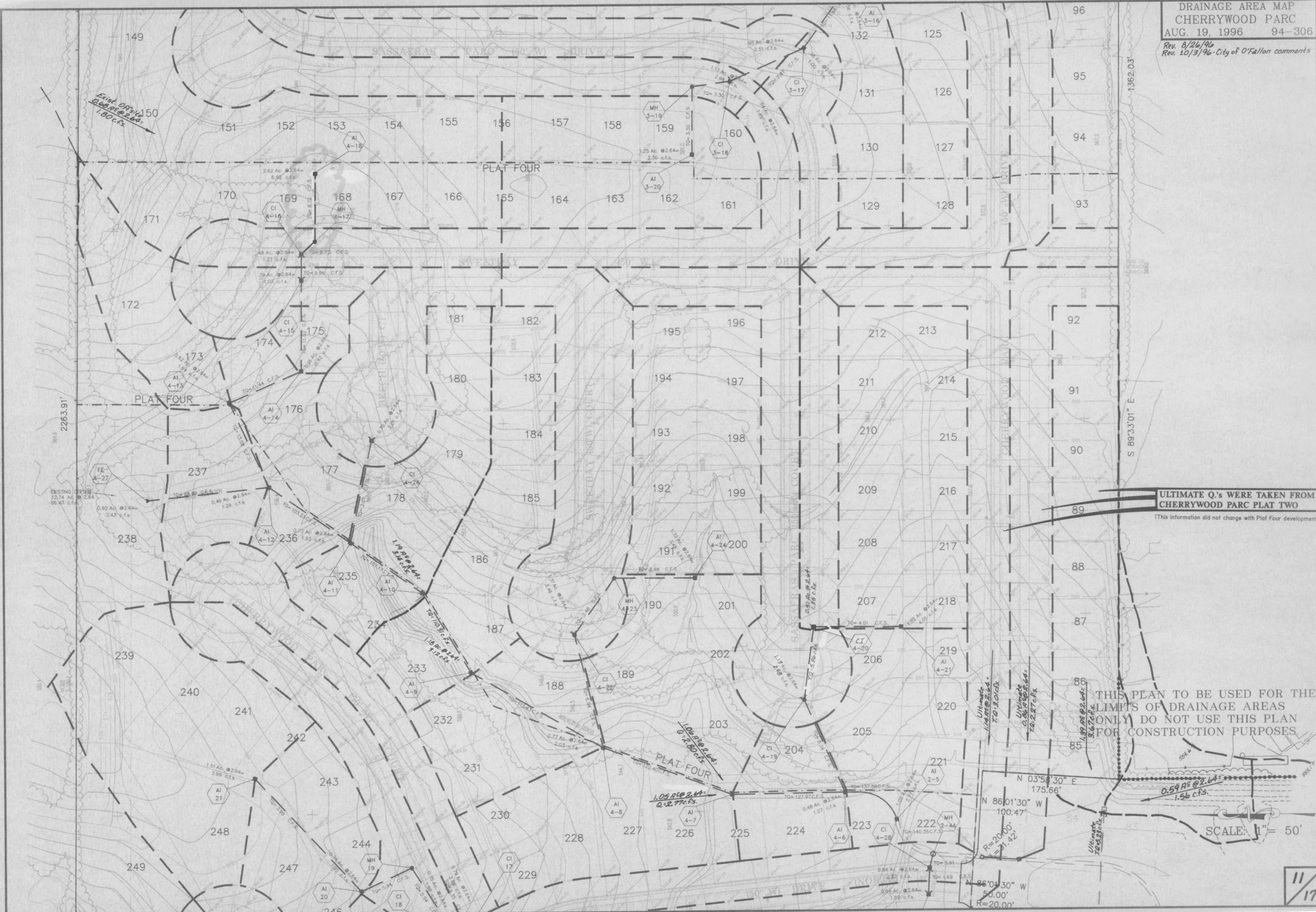


Rev. 8/26/96
 Rev. 10/3/96 - City of O'Fallon comments



ULTIMATE Q's WERE TAKEN FROM
 CHERRYWOOD PARC PLAT TWO
 (This information did not change with Plat Four development)

THIS PLAN TO BE USED FOR THE
 LIMITS OF DRAINAGE AREAS
 ONLY DO NOT USE THIS PLAN
 FOR CONSTRUCTION PURPOSES

SCALE: 1" = 50'
 N 03°58'30" E 175.66'
 N 86°01'30" W 100.47'
 R=20.00'
 S 89°33'01" E