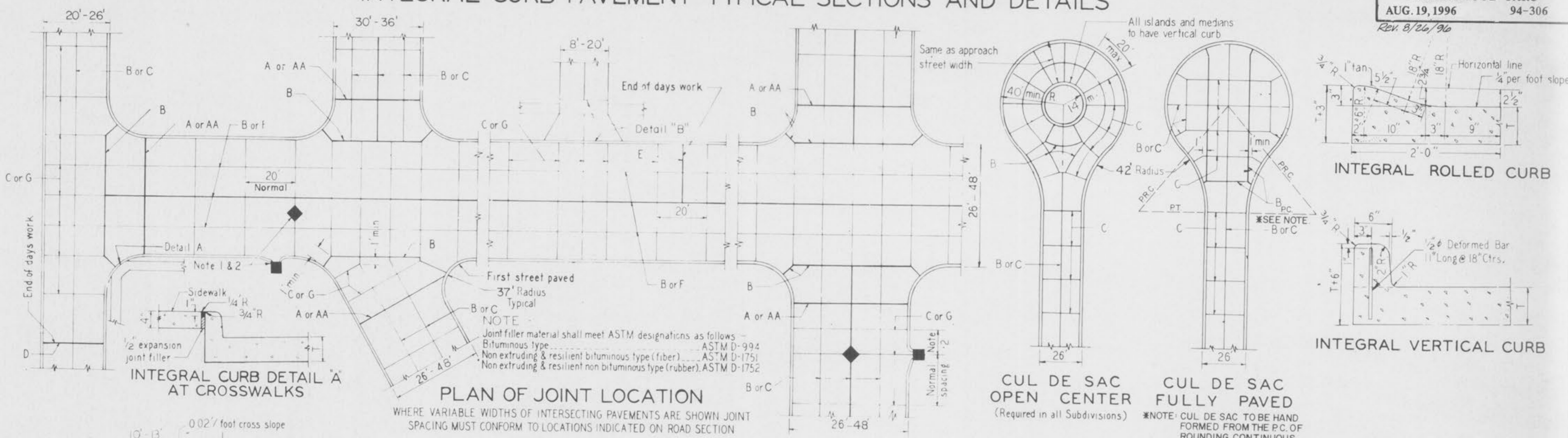
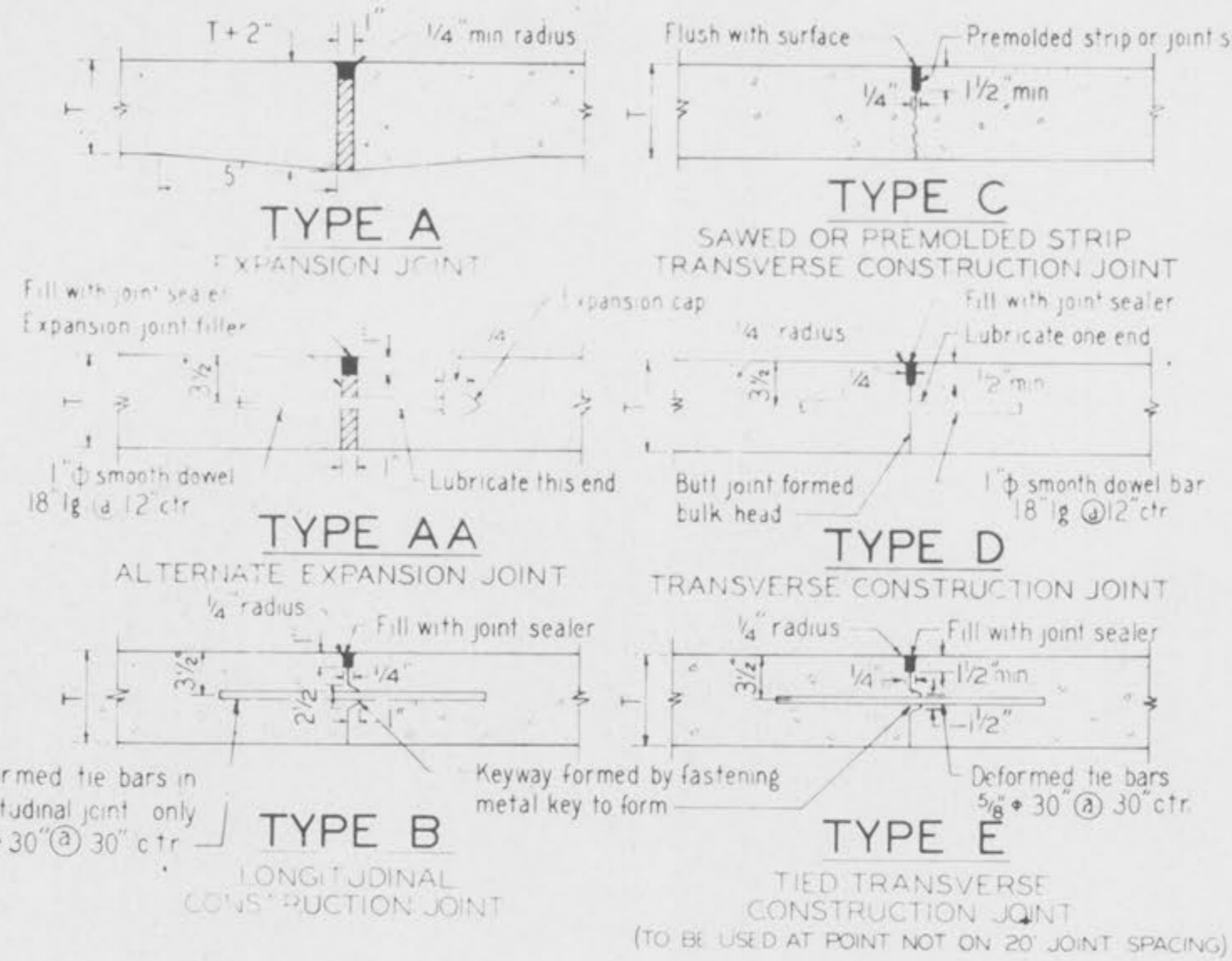
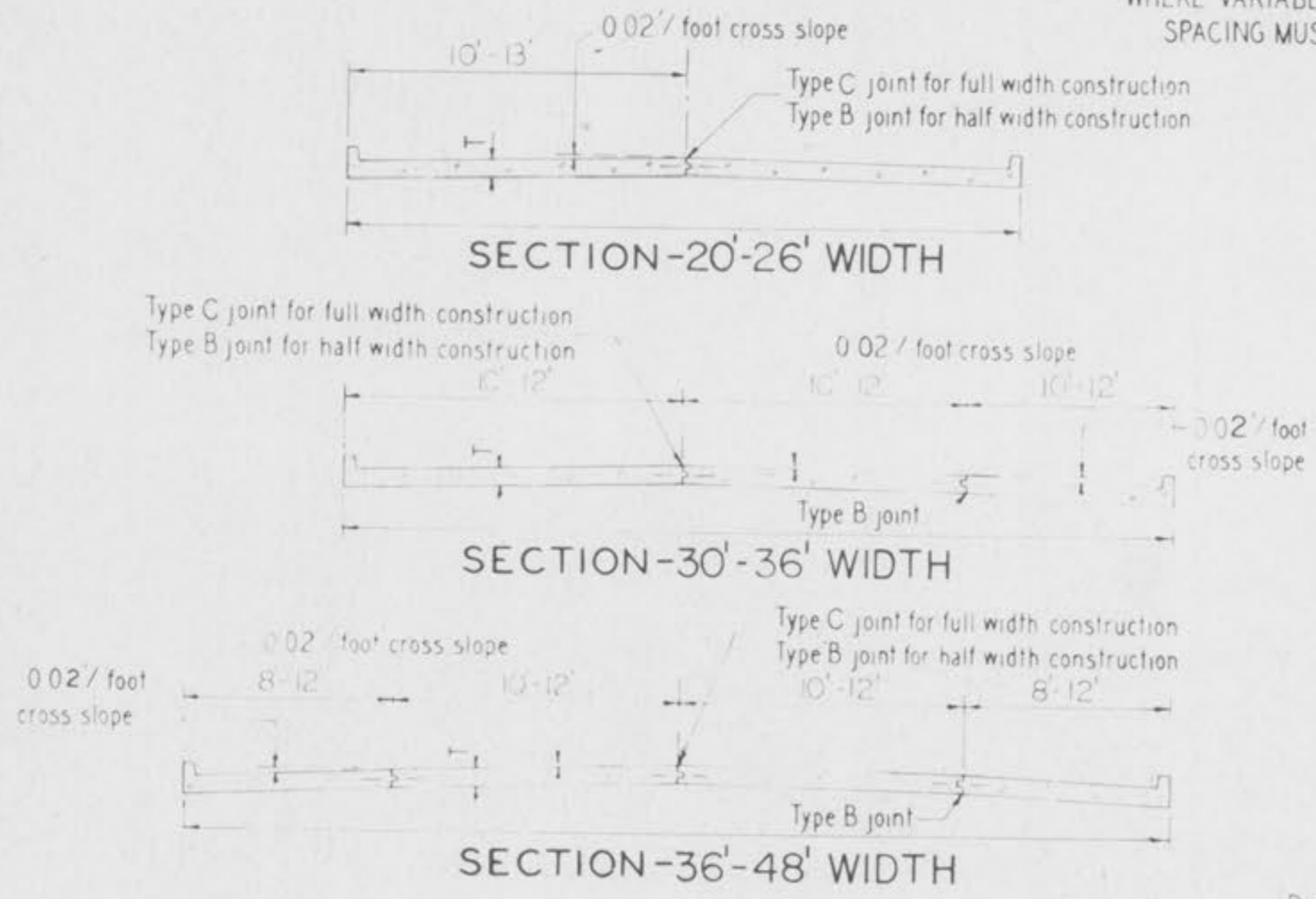


INTEGRAL CURB PAVEMENT TYPICAL SECTIONS AND DETAILS

PLAT FOUR
CONSTRUCTION DETAILS
CHERRYWOOD PARC
AUG. 19, 1996 94-306
REV. B/26/96



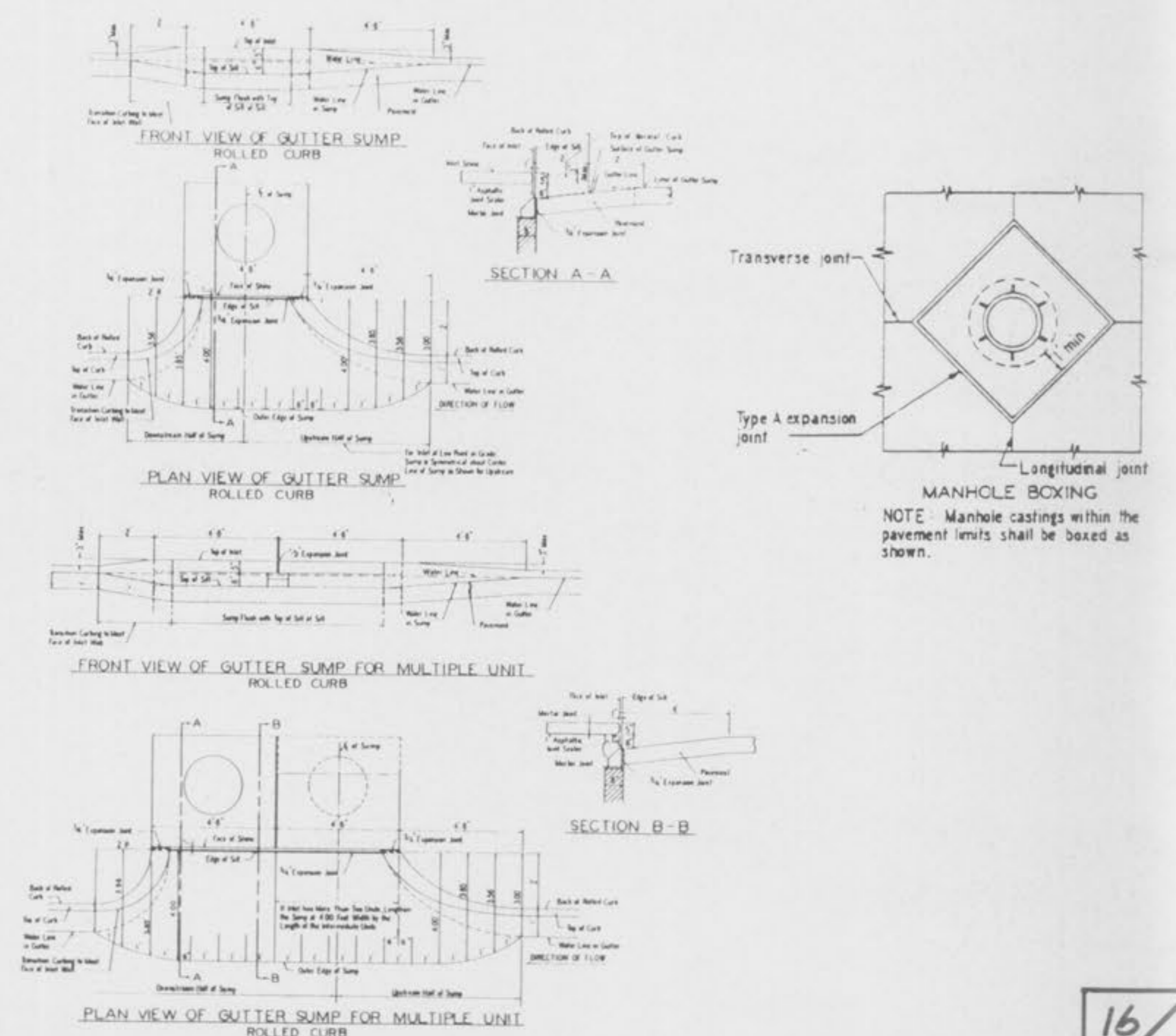
PLAN OF JOINT LOCATION
 WHERE VARIABLE WIDTHS OF INTERSECTING PAVEMENTS ARE SHOWN JOINT SPACING MUST CONFORM TO LOCATIONS INDICATED ON ROAD SECTION



5) Minimum Thickness for Pavement is:

Street Classification	CONCRETE (T)
Local or Minor Streets	6"
Major or Industrial Streets	7"
Arterial or Industrial Streets	8"

- General Notes:
- All catch basins shall be separated from the pavement and curb by expansion joint material extending completely through curb and slab. Manhole castings within the pavement limits shall be boxed as shown in the "Sewer Construction Details".
 - When a joint falls within 5 ft. of or contacts basins, manholes, or other structures, shorten one or more panels either side of opening to permit joint to fall on round structures and at or between corners of rectangular structures.
 - Driveway configurations are shown in the "Entrance Construction Details".
 - Construction joint and dowel bars may be omitted when curb is poured integral with pavement.



REVISIONS
 3-73
 NEW 1-70