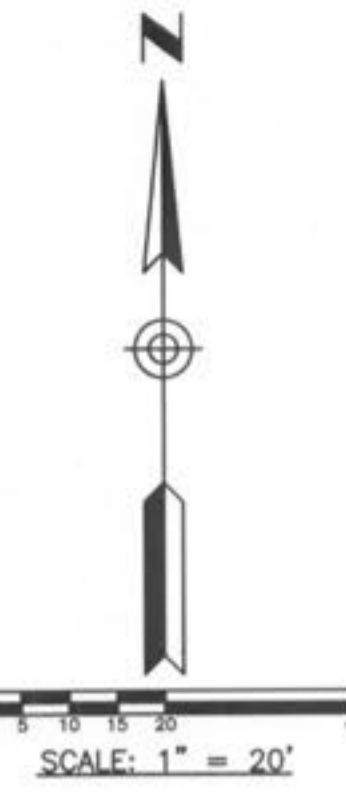


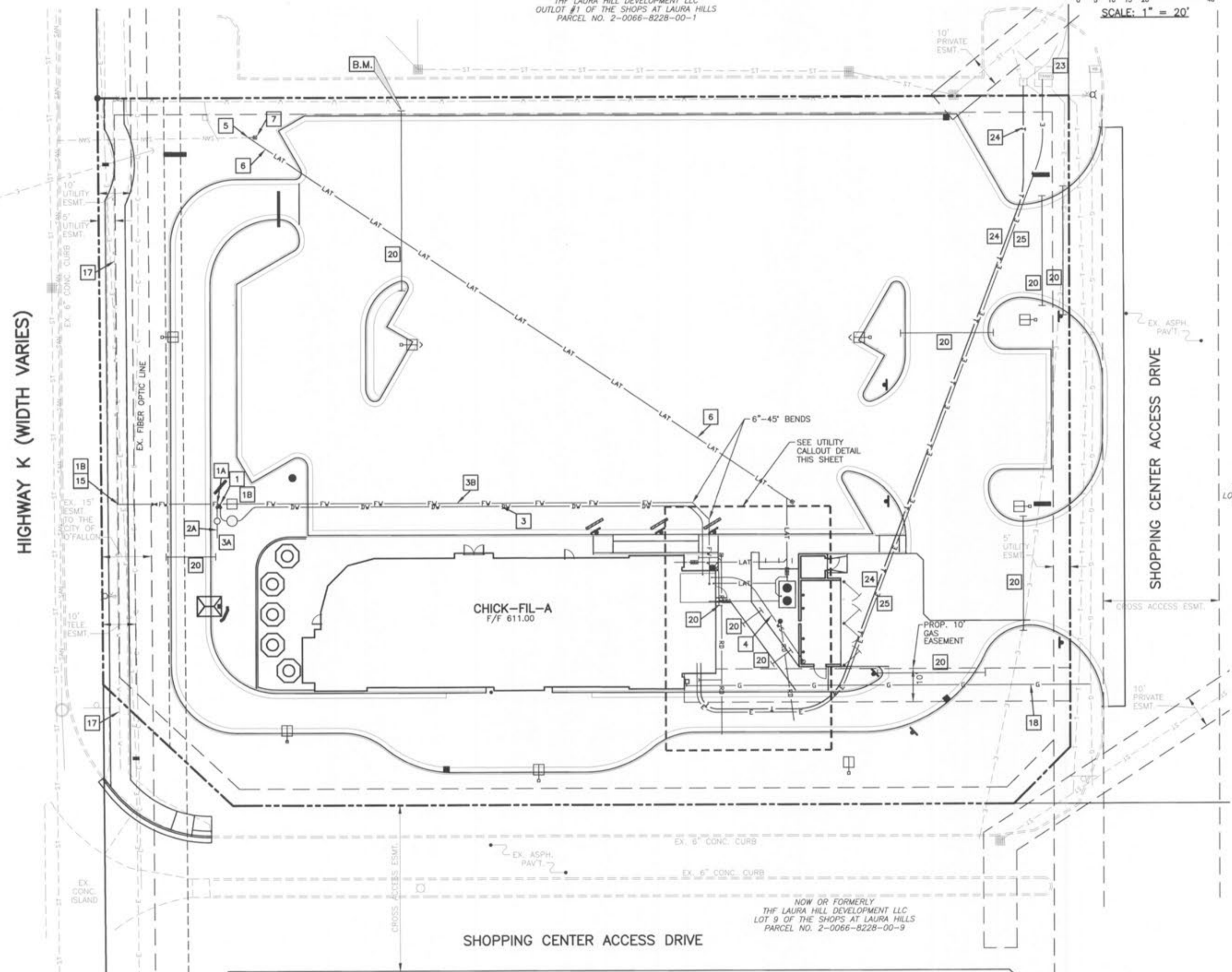
LEGEND		LEGEND	
▲	PROP. FIRE HYDRANT	---	EX. GAS LINE
△	EX. FIRE HYDRANT	---	PROP. TELEPHONE LINE
⋈	PROP. VALVE	---	EX. TELEPHONE LINE
⋈	EX. VALVE	---	PROP. SANITARY SEWER
●	PROP. MANHOLE	---	PROP. SANITARY LATERAL
○	EX. MANHOLE	---	EX. SANITARY SEWER
■	PROP. CURB INLET	---	PROP. STORM SEWER
□	EX. BOX INLET	---	PROP. ROOF DRAIN
⊙	EX. TREE	---	EX. STORM SEWER
⊙	EX. PINE TREE	---	PROP. WATER LINE
⊙	EX. LIGHT POLE	---	PROP. WATER SERVICE
---	EX. FIBER OPTIC LINE	---	PROP. FIRE WATER SERVICE
---	PROP. ELECTRIC LINE	---	PROP. DOMESTIC WATER SERVICE
---	EX. ELECTRIC LINE	---	EX. WATER LINE
---	PROP. GAS LINE	---	EX. FENCE
		---	EX. CURB

NOW OR FORMERLY
THE LAURA HILL DEVELOPMENT LLC
OUTLOT #1 OF THE SHOPS AT LAURA HILLS
PARCEL NO. 2-0066-8228-00-1



LAYOUT NOTES

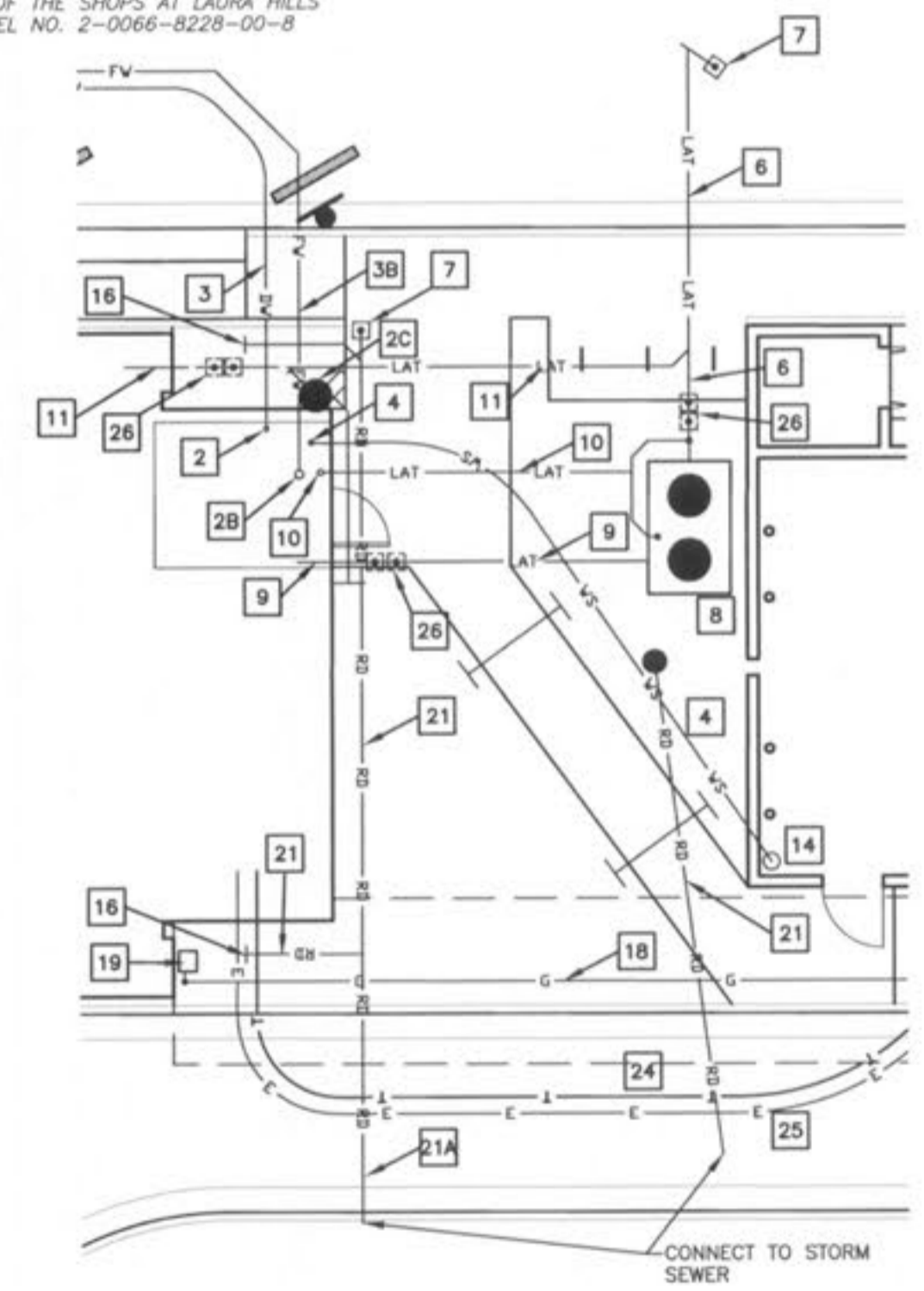
- 1 PAY CONNECTION FEES FOR 2" DOMESTIC WATER SERVICE AND 2" METER, RUN SEPARATE 2" DOMESTIC LINE TO BUILDING. METER TO BE PER WATER COMPANY'S SPECIFICATIONS AND REQUIREMENTS. METER TO BE SET IN THE LANDSCAPED AREA AS SHOWN.
- 1A PAY CONNECTION FEES FOR 1" IRRIGATION WATER SERVICE AND 1" METER, RUN SEPARATE 1" IRRIGATION LINE TO BUILDING. METER TO BE PER WATER COMPANY'S SPECIFICATIONS AND REQUIREMENTS. METER TO BE SET IN THE LANDSCAPED AREA AS SHOWN.
- 1B CONNECT 6" FIRE PROTECTION LINE AND 6" METER (IF REQUIRED), RUN SEPARATE 6" LINE TO BUILDING PER WATER COMPANY'S SPECIFICATIONS AND REQUIREMENTS. CONTACT PWS# 2 FOR REQUIRED INSPECTION.
- 2 INSTALL 2" DOMESTIC DOUBLE CHECK VALVE ASSEMBLY INSIDE BUILDING (REQUIRED).
- 2A INSTALL 1" IRRIGATION DOUBLE CHECK VALVE ASSEMBLY. INSTALL AHEAD OF ANY SPRINKLER.
- 2B INSTALL 6" FIRE PROTECTION DOUBLE CHECK VALVE ASSEMBLY INSIDE BUILDING (REQUIRED).
- 2C INSTALL FIRE DEPARTMENT CONNECTION ON BUILDING (REQUIRED).
- 3 INSTALL 2" TYPE K COPPER DOMESTIC WATER SERVICE. PLUMBING CONTRACTOR TO COORDINATE WITH BUILDING CONTRACTOR.
- 3A INSTALL 1" TYPE K COPPER IRRIGATION WATER SERVICE. PLUMBING CONTRACTOR TO COORDINATE WITH BUILDING CONTRACTOR AND IRRIGATION CONTRACTOR.
- 3B INSTALL 6" DUCTILE IRON WATER MAIN FOR FIRE PROTECTION. PLUMBING CONTRACTOR TO COORDINATE WITH BUILDING CONTRACTOR AND FIRE PROTECTION CONTRACTOR.
- 4 3/4" COLD WATER SERVICE TO DUMPSTER POST HYDRANT.
- 5 INSTALL 6" WASTEWATER SERVICE LATERAL. CONTRACTOR TO LOCATE EXISTING 6" LATERAL PRIOR TO TRENCHING AND MAKE CONNECTION TO 6" LATERAL.
- 6 6" SCHEDULE 40 PVC WASTEWATER SERVICE LINE AT 2.0% MINIMUM SLOPE.
- 7 6" CLEAN OUT (SEE DETAIL). CLEANOUT SHALL BE FLUSH W/ PAVEMENT & INSTALLED UNDER A PROTECTIVE METAL BOX COVER SIMILAR TO A METER PIT COVER WITH A TRAFFIC BEARING LID.
- 8 PRECAST 1,000 GALLON CAPACITY GREASE TRAP. PLUMBING CONTRACTOR TO COORDINATE WITH BUILDING CONTRACTOR. TOP OF MANHOLE TO BE 0.2' ABOVE FINISH GRADE AND MATCH SIDEWALK GRADES WHERE REQUIRED. VERIFY GREASE TRAP MEETS CITY/COUNTY SPECIFICATIONS PRIOR TO INSTALLATION. REFER TO PLUMBING PLAN, SHEET P-1.1.
- 9 4" KITCHEN WASTE LINE (FL = 4'-0" BELOW FINISHED FLOOR ELEVATION)
- 10 3" VENT LINE. CONNECT TO GREASE INTERCEPTOR (SEE SHEET P-1 FOR LOCATION).
- 11 4" RESTROOM WASTE LINE (FL = 4'-0" BELOW FINISHED FLOOR ELEVATION)
- 12 6" SCHEDULE 40 PVC DUMPSTER WASTE LINE AT 1.0% MINIMUM SLOPE INCLUDING ALL FITTINGS. (NOT USED)
- 13 DUMPSTER PAD DRAIN. REFER TO THE FIXTURE CONNECTION SCHEDULE (P-32) DEPICTED ON THE PROJECT PLUMBING PLANS. (NOT USED)
- 14 DUMPSTER POST HYDRANT. REFER TO THE FIXTURE CONNECTION SCHEDULE (P-31) DEPICTED ON THE PROJECT PLUMBING PLANS.
- 15 CFA SERVICE. CONNECT TO EXISTING WATER LINE WITH A 10" X 6" TAPPING SLEEVE & VALVE.
- 16 DOWNSPOUT FOR ROOF DRAINAGE (REFER TO ARCHITECTURAL PLANS). CONNECT TO STORM SEWER.
- 17 EXISTING WATER LINE.
- 18 PROPOSED GAS SERVICE. CONTRACTOR SHALL COORDINATE INSTALLATION TO INSURE THE APPROPRIATE BENDS ARE INCORPORATED TO MAINTAIN A MINIMUM OF 1.0' CLEARANCE BELOW ALL STORM SEWER, WATER, AND WASTEWATER LINES OR SERVICES WHEN CROSSING. CONTRACTOR TO COORDINATE WITH GAS COMPANY.
- 19 COORDINATE GAS METER INSTALLATION WITH GAS COMPANY. CONTRACTOR TO MARK LOCATION OF METER ON WALL PRIOR TO GAS COMPANY ARRIVING ON-SITE.
- 20 4" SCHEDULE 40 PVC IRRIGATION SLEEVE (REFER TO IRRIGATION PLANS).
- 21 4" PVC SCHEDULE 80 PVC ROOF DRAIN PIPE DRAIN. CONNECT TO 6" ROOF DRAIN.
- 21A 6" PVC SCHEDULE 80 PVC ROOF DRAIN PIPE DRAIN. CONNECT TO STORM SEWER.
- 22 UNDERGROUND PRIMARY ELECTRIC SERVICE. CONTRACTOR TO INSTALL 3-4" SCHEDULE 40 CONDUITS FROM POWER POLE TO TRANSFORMER PAD LOCATION ALONG WITH PULL STRINGS PER ELECTRIC COMPANY SPECIFICATIONS AND REQUIREMENTS.
- 23 EXISTING PAD MOUNTED TRANSFORMER.
- 24 UNDERGROUND PRIMARY TELEPHONE SERVICE. CONTRACTOR TO INSTALL 3" PVC CONDUIT W/SWEEPING 90'S AND W/PULL STRING FOR TELEPHONE COMPANY. A 4'X4'X3/4" PIECE OF PLYWOOD MUST BE IN PLACE PRIOR TO INSTALLATION OF THE SERVICE. ALSO A #6 GROUND MUST BE AVAILABLE. CONTRACTOR TO ALSO INSTALL AN ADDITIONAL SPARE 4" CONDUIT PARALLEL TO THE TELEPHONE COMPANY'S CONDUIT FOR FUTURE USE BY CHICK-FIL-A.
- 25 UNDERGROUND SECONDARY ELECTRIC SERVICE TO BUILDING. CONTRACTOR TO INSTALL AND PAY ALL AFFILIATED COST RELATED TO WORK. (REFER TO MEP PLANS) CONTRACTOR TO INSTALL 2-4" SCH 40 PVC CONDUITS AND 1-2" SCH 40 PVC CONDUIT.
- 26 4" TWO-WAY CLEAN OUT (REFER TO PLUMBING PLANS) CLEANOUT SHALL BE FLUSH W/ PAVEMENT & INSTALLED UNDER A PROTECTIVE METAL BOX COVER SIMILAR TO A METER PIT COVER WITH A TRAFFIC BEARING LID.



NOW OR FORMERLY
THE LAURA HILL DEVELOPMENT LLC
OUTLOT #3 OF THE SHOPS AT LAURA HILLS
PARCEL NO. 2-0066-8228-00-3

PUBLIC WATER SUPPLY DISTRICT No. 2 OF ST. CHARLES COUNTY NOTE:
WHEN CONNECTIONS TO THE DISTRICT'S EXISTING WATER MAIN ARE MADE, AND WHEN THE PROPOSED SYSTEM IS PRESSURE TESTED AND BACTERIOLOGICAL SAMPLES ARE TAKEN, WE MUST HAVE AN INSPECTOR PRESENT ON SITE FOR THESE PORTIONS OF THE PROJECT. WE REQUIRE A 48 HOUR NOTICE TO SCHEDULE AN INSPECTOR.

NOW OR FORMERLY
THE LAURA HILL DEVELOPMENT LLC
LOT 8 OF THE SHOPS AT LAURA HILLS
PARCEL NO. 2-0066-8228-00-8



UTILITY CALLOUT DETAIL
SCALE: 1" = 10'

SITE BENCH MARK 1
RR SPIKE SET ON THE EAST SIDE OF POWER POLE
ELEVATION = 488.05

CHICK-FIL-A
O'FALLON, MO
(#2645)

FSR S08N-144-R
2106 HIGHWAY K
O'FALLON, MO
63366

GBC DESIGN, INC.
3378 W. Market St.
Akron, OH 44333-3356
Phone 330-556-0225 Fax 330-836-5782

CONTACT:
GARY R. ROUSE

ENGINEER
SIGNATURE
BLOCK



Chick-fil-a
5200 BUFFINGTON RD.
ATLANTA, GA 30349-2998
24 HOUR EMERGENCY CONTACT:
SCOTT D. PATMAN PH-404-305-4594



PLUMBING SITE PLAN

P+Z No. 1810.01

City No.

Page No.

PS-1.0