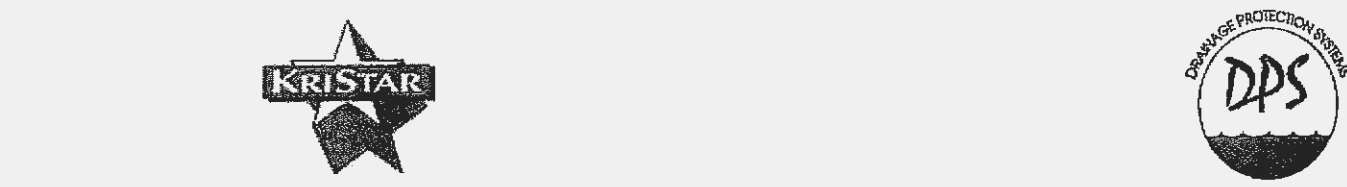
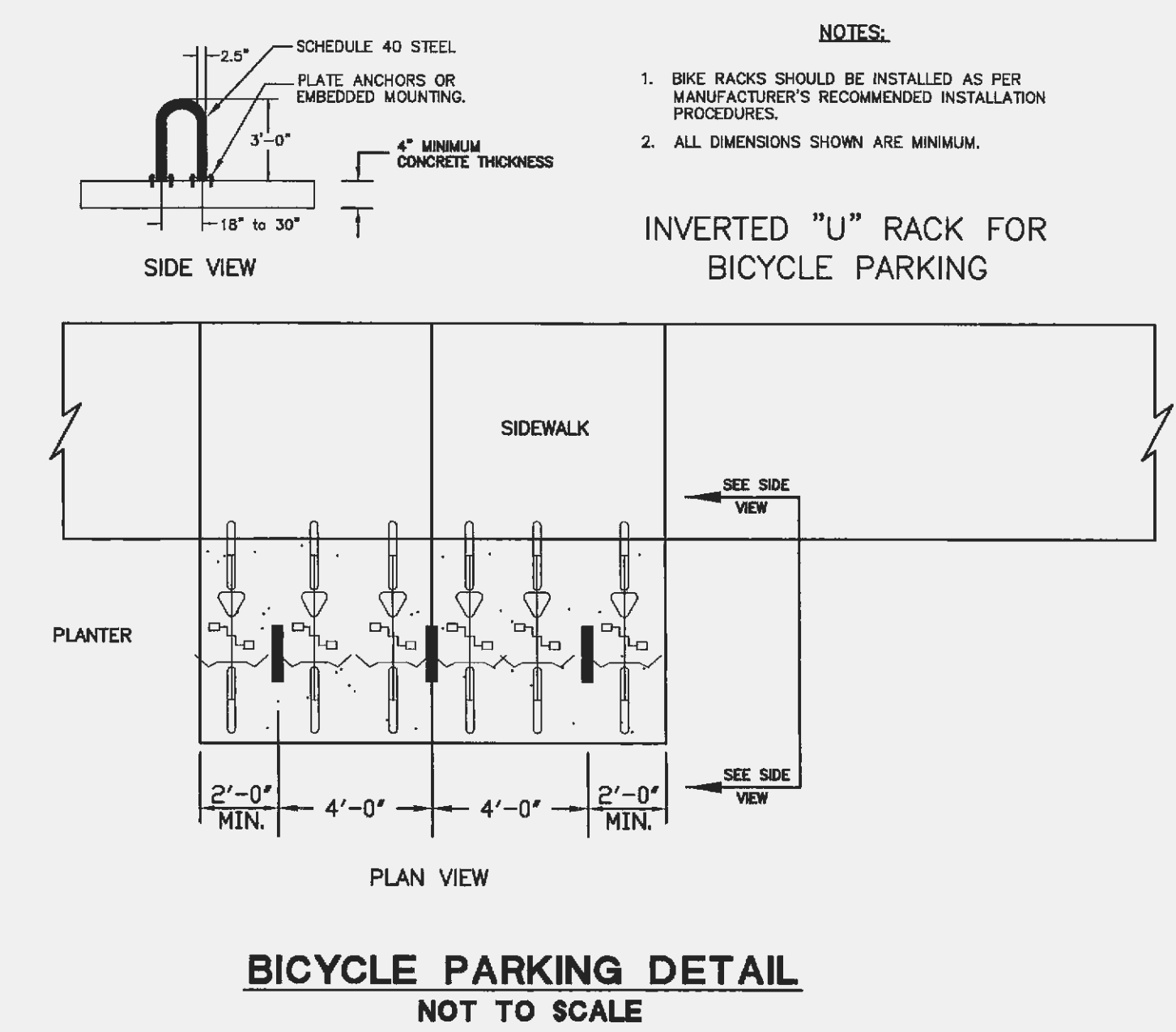
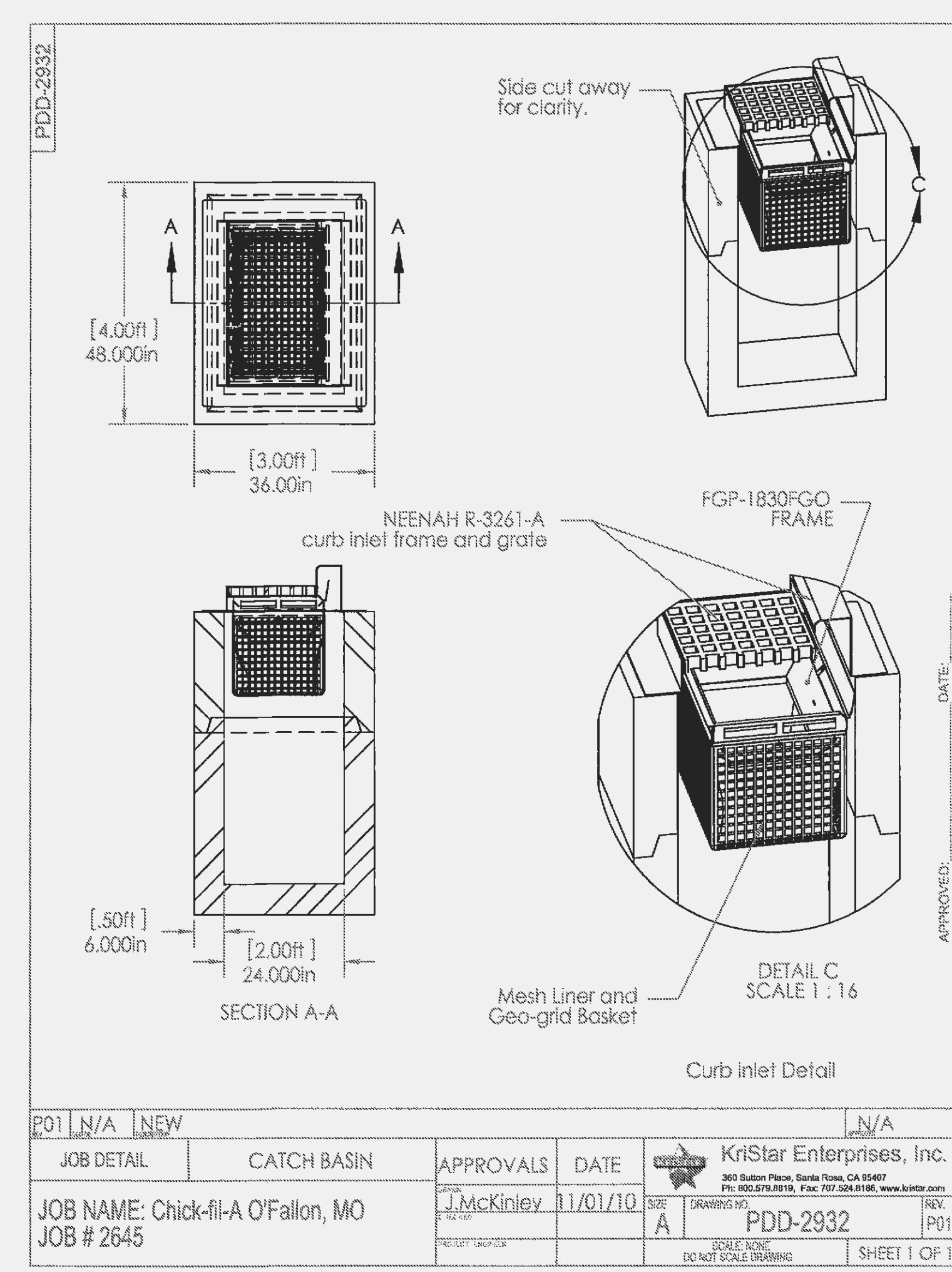
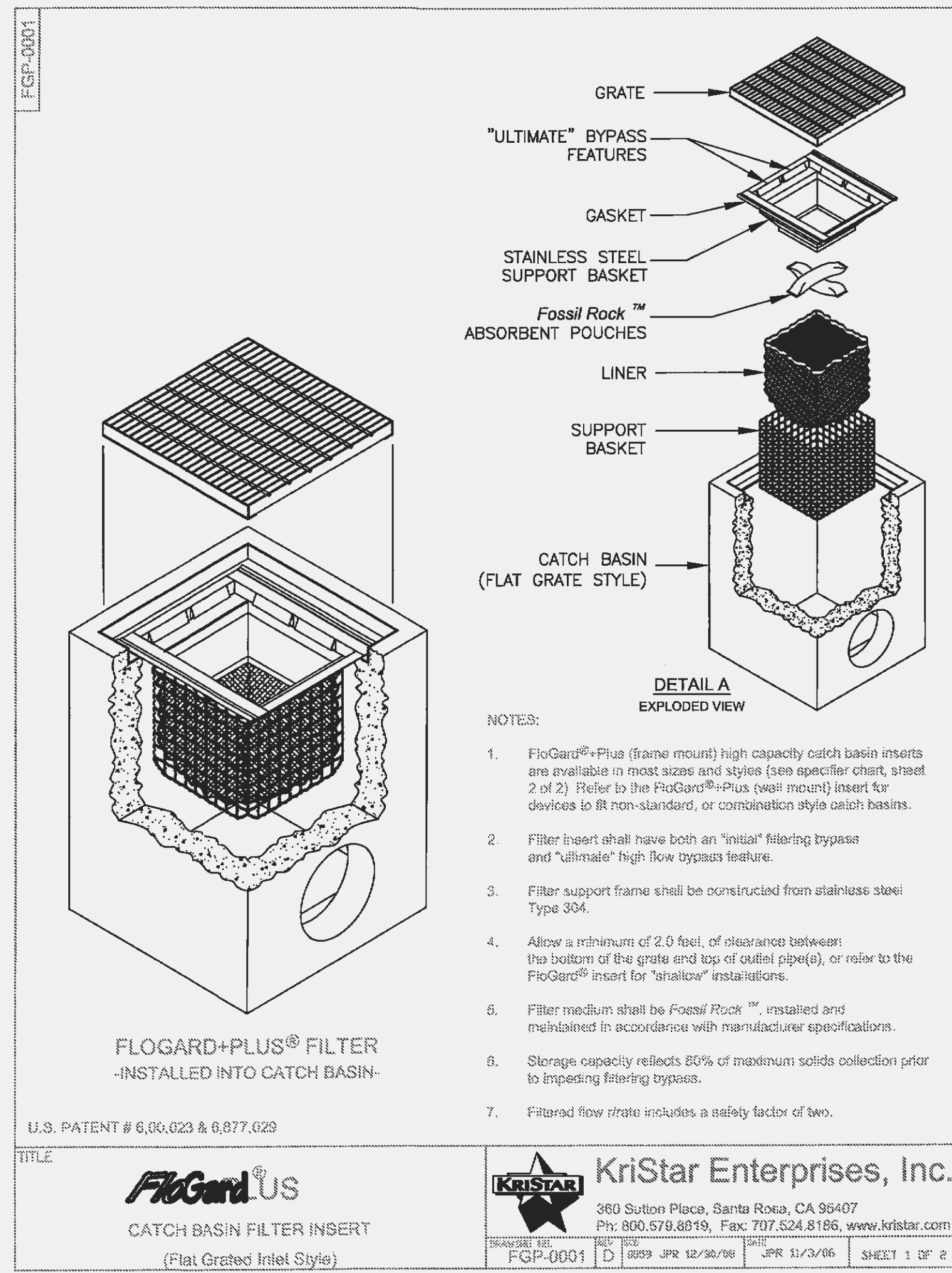


**26 DOUBLE SANITARY CLEANOUT**

SCALE: NONE



**GENERAL SPECIFICATIONS FOR MAINTENANCE OF FLOGARD+PLUS® CATCH BASIN INSERT FILTERS**

**SCOPE:**  
Federal, State and Local Clean Water Act regulations and those of insurance carriers require that stormwater filtration systems be maintained and serviced on a recurring basis. The intent of the regulations is to ensure that the systems, on a continuing basis, efficiently remove pollutants from stormwater runoff thereby preventing pollution of the nation's water resources. These Specifications apply to the FloGard+Plus® Catch Basin Insert Filter.

**RECOMMENDED FREQUENCY OF SERVICE:**  
Drainage Protection Systems (DPS) recommends that installed FloGard+Plus® Catch Basin Insert Filters be serviced on a recurring basis. Ultimately, the frequency depends on the amount of runoff, pollutant loading and interference from debris (leaves, vegetation, cans, paper, etc.); however, it is recommended that each installation be serviced a minimum of three times per year, with a change of filter medium once per year. DPS technicians are available to do an on-site evaluation, upon request.

**RECOMMENDED TIMING OF SERVICE:**  
DPS guidelines for the timing of service are as follows:  
1. For areas with a definite rainy season: Prior to, during and following the rainy season.  
2. For areas subject to year-round rainfall: On a recurring basis (at least three times per year).  
3. For areas with winter snow and summer rains: Prior to and just after the snow season and during the summer rain season.  
4. For installed devices not subject to the elements (washtracks, parking garages, etc.): On a recurring basis (no less than three times per year).

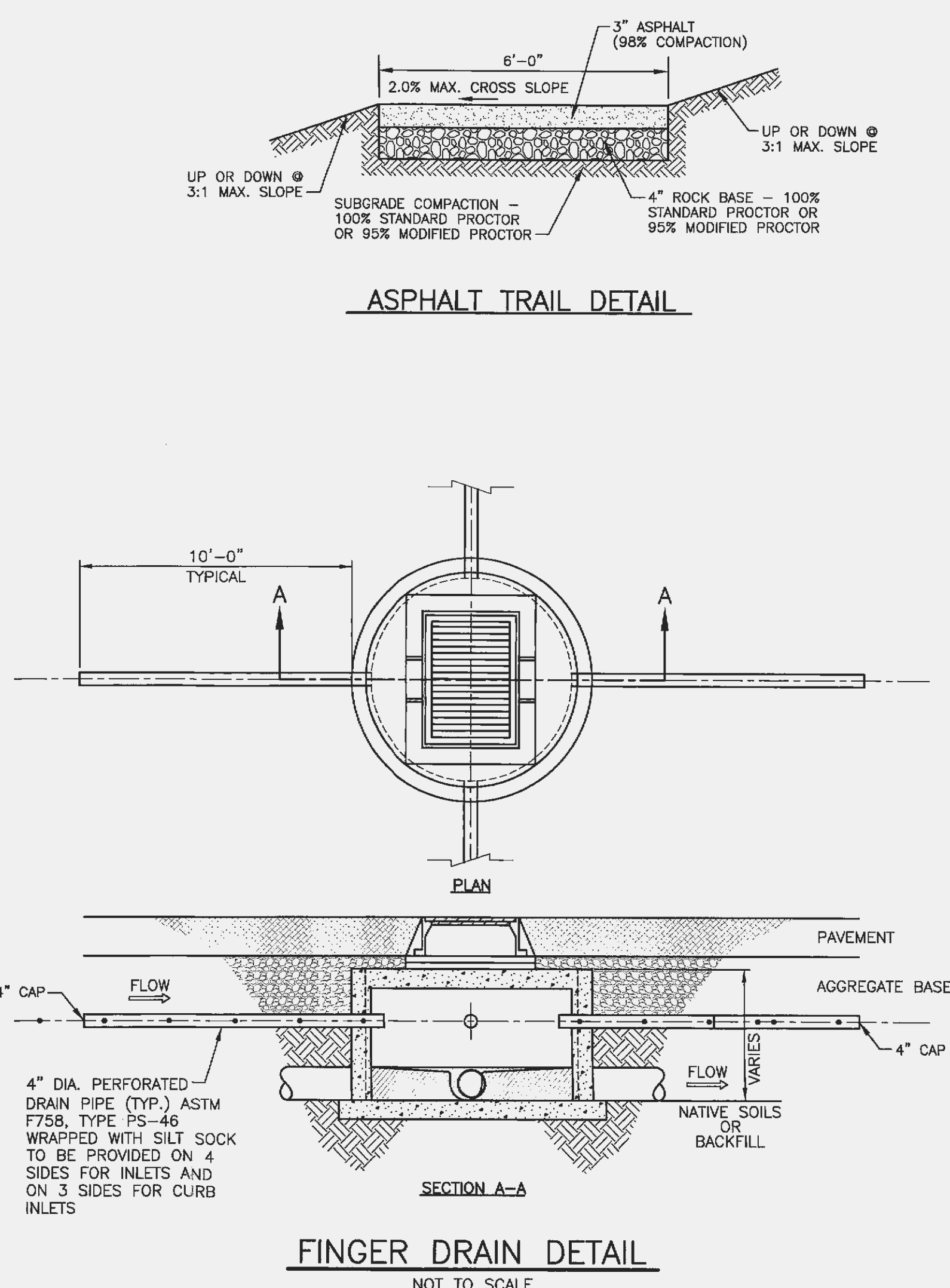
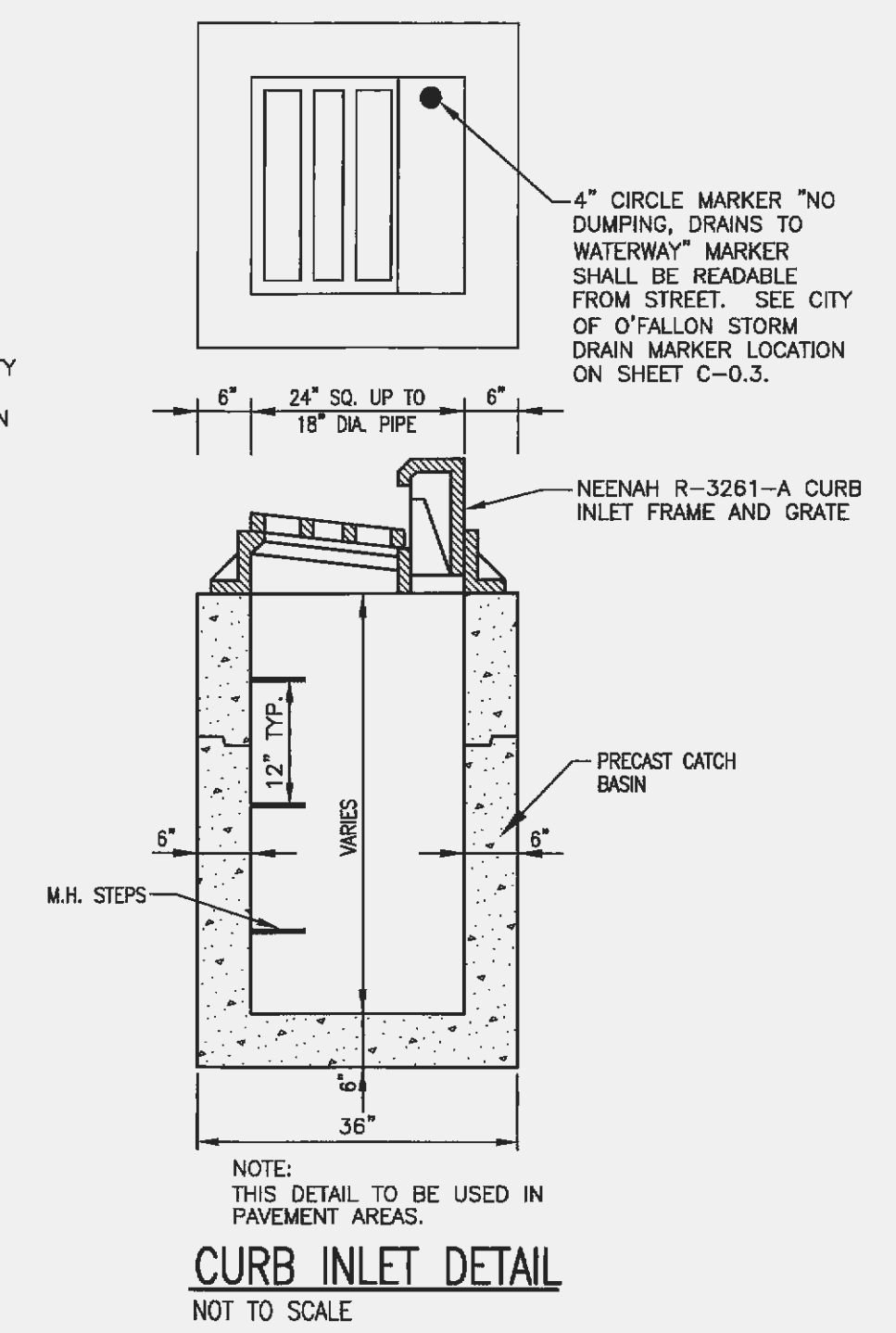
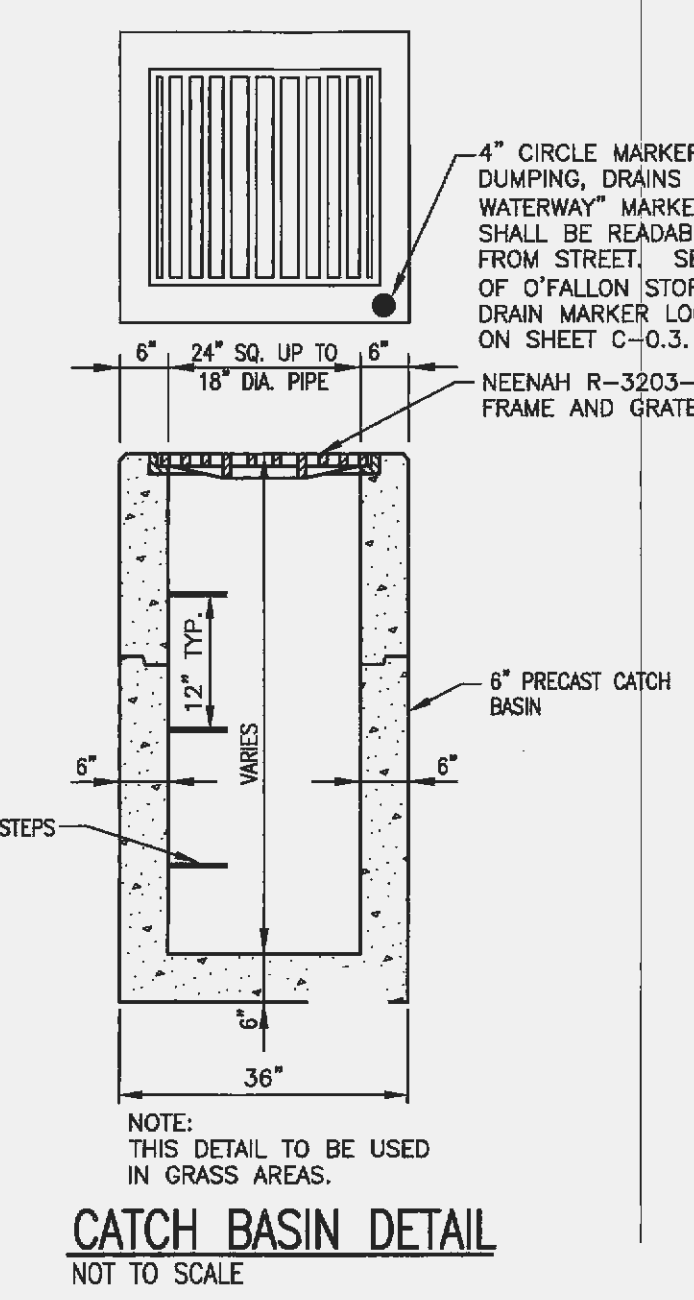
**SERVICE PROCEDURES:**  
1. The service shall commence with collection and removal of sediment and debris (litter, leaves, papers, cans, etc.) and broom sweeping around the drainage inlet. Accumulated materials shall be placed in a DOT approved container for later disposal.  
2. The catch basin shall be visually inspected for defects and possible illegal dumping. If illegal dumping has occurred, the proper authorities and property owner representative shall be notified as soon as practicable.  
3. The catch basin grate shall be removed and set to one side. Using an industrial vacuum, the collected materials shall be removed from the liner. (Note: DPS uses a truck-mounted vacuum for servicing FloGard+Plus® catch basin inserts.)  
4. When all of the collected materials have been removed, the filter medium pouches shall be removed by unsnapping the tether from the D-ring and set to one side. The filter liner, gaskets, stainless steel frame and mounting brackets, etc. shall be inspected for continued serviceability. Minor damage or defects found shall be corrected on-the-spot and a notation made on the Maintenance Record. More extensive deficiencies that affect the efficiency of the filter (torn liner, etc.), if approved by the customer representative, will be corrected and an invoice submitted to the representative along with the Maintenance Record.  
5. The filter medium pouches shall be inspected for defects and continued serviceability and replaced as necessary and the pouch tethers re-attached to the liner's D-ring. See below.  
6. The grate shall be replaced.

**EXCHANGE AND DISPOSAL OF EXPOSED FILTER MEDIUM AND COLLECTED DEBRIS**

The frequency of filter medium pouch exchange will be in accordance with the existing DPS-Customer Maintenance Contract. DPS recommends that the medium be changed at least once per year. During the appropriate service, or if so determined by the service technician during a non-scheduled service, the filter medium pouches will be replaced with new pouches and the exposed pouches placed in the DOT approved container, along with the exposed debris. Once the exposed pouches and debris have been placed in the container, DPS has possession and must dispose of it in accordance with local, state and federal agency requirements.

*Note: As the generator, the landowner is ultimately responsible for the proper disposal of the exposed filter medium and debris. Because the materials likely contain petroleum hydrocarbons, heavy metals and other harmful pollutants, the materials must be treated as an EPA Class 2 Hazardous Waste and properly disposed of. DPS relieves the landowner of the actual disposal task, and provides certification of its completion in accordance with appropriate regulations.*

DPS also has the capability of servicing all manner of catch basin inserts and catch basins without inserts, underground oil/water separators, stormwater interceptors and other such devices. All DPS personnel are highly qualified technicians and are confined space trained and certified. Call us at (888) 950-8826 for further information and assistance.



**CHICK-FIL-A**  
O'FALLON, MO (#2645)  
FSR S08N-144-R  
2106 HIGHWAY K  
O'FALLON, MO 63366

**GBC Design, Inc.**  
8878 W. Market St. Akron, OH 44388-3886  
Phone 330-886-0228 Fax 330-886-5782

**CONTACT: GARY R. ROUSE**

**ENGINEER SIGNATURE BLOCK**  
GARY R. ROUSE  
Professional Engineer  
No. 2007035780  
7/15/11

**CIVIL CONSTRUCTION DETAILS**

**Chick-Fil-A**  
5200 BUFFINGTON RD.  
ATLANTA, GA 30349-2998  
24 HOUR EMERGENCY CONTACT:  
SCOTT D. PATMAN PH-404-305-4594

P+Z No. 1810.01  
City No.  
Page No.  
**C-5.0**