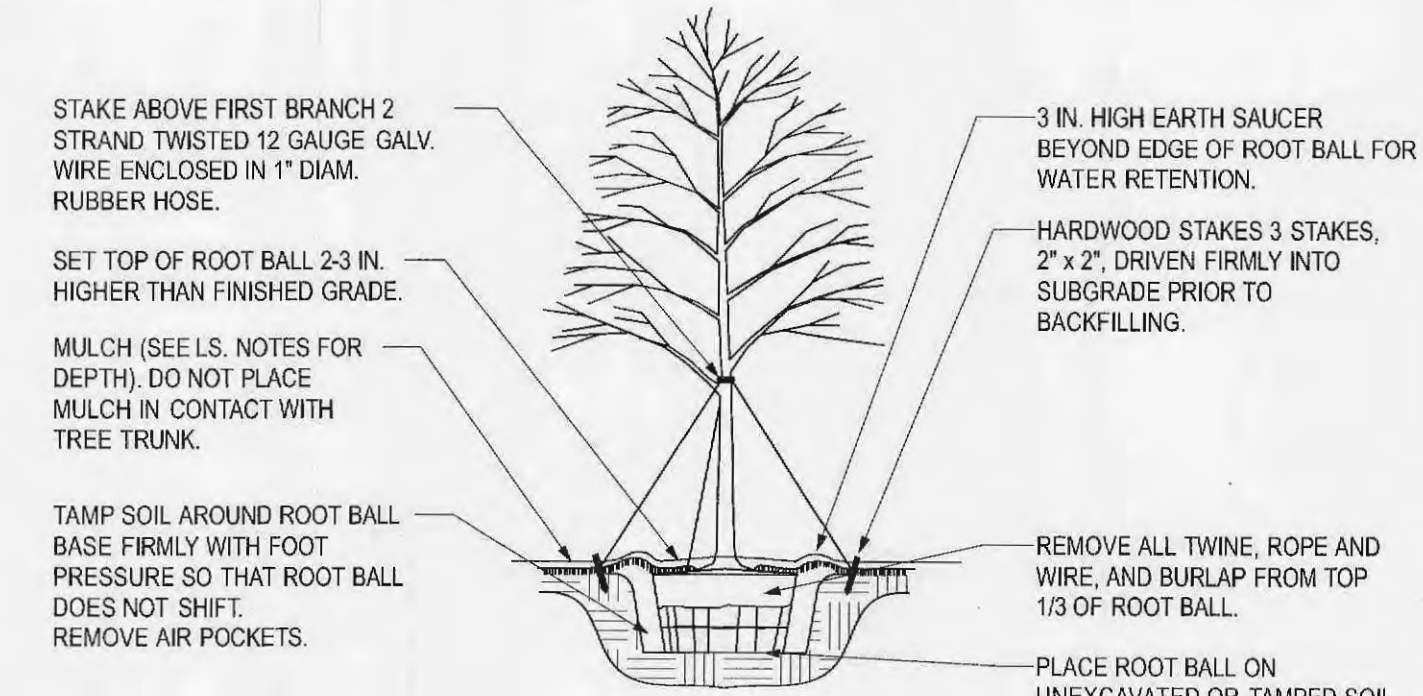


**NOTE**  
1. HOLE TO BE TWICE THE SIZE OF THE ROOTBALL.



**NOTE**  
1. HOLE TO BE TWICE THE SIZE OF THE ROOTBALL.  
2. DO NOT HEAVILY PRUNE THE TREE AT PLANTING. PRUNE ONLY CROSSOVER LIMBS, CO-DOMINANT LEADERS, AND BROKEN OR DEAD BRANCHES. MAY BE PRUNED; HOWEVER, DO NOT REMOVE THE TERMINAL BUDS OF BRANCHES THAT EXTEND TO THE EDGE OF THE CROWN. DO NOT HEAVILY PRUNE THE TREE AT PLANTING. PRUNE ONLY CROSSOVER LIMBS, CO-DOMINANT SOME INTERIOR TWIGS AND LATERAL BRANCHES.  
3. EACH TREE MUST BE PLANTED SUCH THAT THE TRUNK FLARE IS VISIBLE AT THE TOP OF THE ROOT BALL. TREES WHERE THE TRUNK FLARE IS NOT VISIBLE SHALL BE REJECTED. DO NOT COVER THE TOP OF THE ROOT BALL WITH SOIL.

**1 SHRUB PLANTING**  
SCALE: NTS

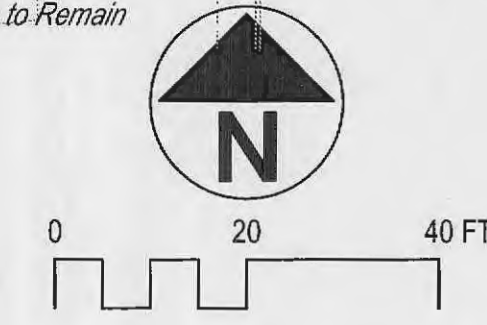
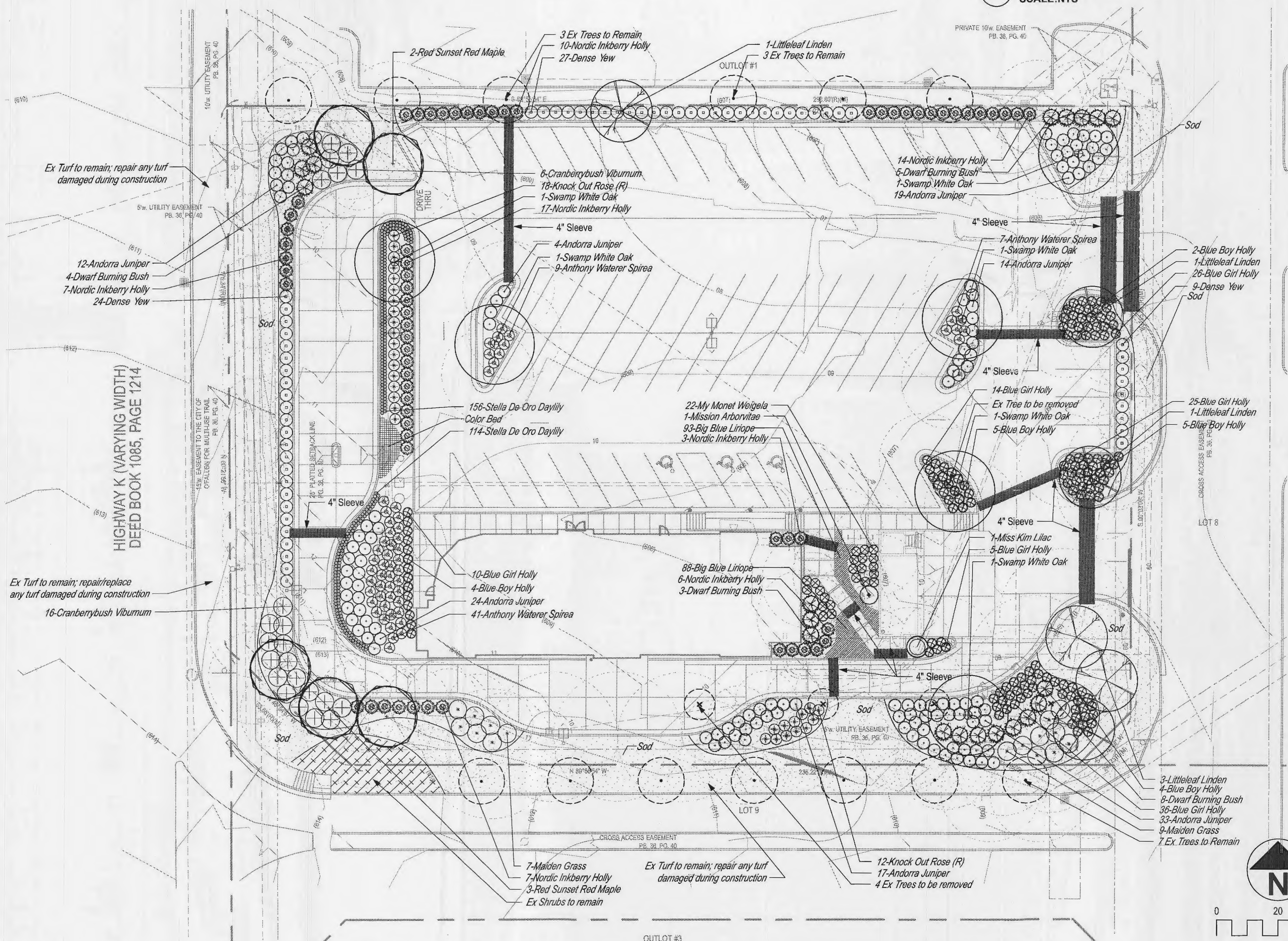
**2 TREE PLANTING**  
SCALE: NTS

**PLANT LIST**

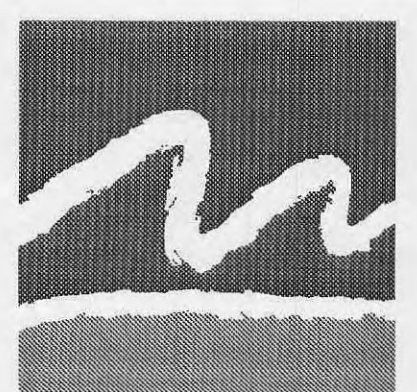
Qty	Botanical Name	Common Name	Scheduled Size	Remarks
<b>Trees</b>				
5	Acer rubrum 'Red Sunset'	Red Sunset Red Maple	2"-2.5" Cal.	B & B
6	Quercus bicolor	Swamp White Oak	2"-2.5" Cal.	B & B
6	Tilia cordata	Littleleaf Linden	2"-2.5" Cal.	B & B
<b>Shrubs</b>				
20	Euonymus alata 'Compacta'	Dwarf Burning Bush	18"-24" Hgt.	B & B
64	Ilex glabra 'Chamin'	Nordic Inkberry Holly	3 Gal.	
20	Ilex x meserveae 'Blue Boy'	Blue Boy Holly	3 Gal.	
116	Ilex x meserveae 'Blue Girl'	Blue Girl Holly	3 Gal.	
123	Juniperus horizontalis 'Youngstown'	Andorra Juniper	3 Gal.	
16	Miscanthus sinensis	Maiden Grass	3 Gal.	
30	Rosa x 'Knock Out'	Knock Out Rose	3 Gal.	
57	Spiraea x bumalda 'Anthony Waterer'	Anthony Waterer Spirea	3 Gal.	
5	Syringa patula 'Miss Kim'	Miss Kim Lilac	7 Gal.	
60	Taxus x media 'Densiformis'	Dense Yew	18" Hgt.	
1	Thuja occidentalis 'Techny'	Mission Arborvitae	6" Hgt.	Specimen
22	Viburnum opulus	Cranberrybush Viburnum	24"-30" Hgt.	
22	Weigela florida 'My Monet'	My Monet Weigela	3 Gal.	
<b>Groundcovers</b>				
270	Hemerocallis 'Stella De Oro'	Stella De Oro Daylily	1 Gal.	
181	Liriope muscari 'Big Blue'	Big Blue Liriope	4" Pot	Plant 15" O.C.
104	Color Bed			
8487	Turf Type Fescue	Turf Type Fescue	SF/Sod	

**LANDSCAPE REQUIREMENTS**

- A. STREET TREES REQUIRED**
- 1 CANOPY TREE PER 40 LF OF FRONTAGE
    - A. HIGHWAY K - 204 LF @ 1 TREE/40 LF = 5 TREES
    - B. ENTRANCE DRIVE SOUTH PROPERTY - 276 LF @ 1 TREE/40 LF = 7 TREES
    - C. DRIVE AT EAST PROPERTY LINE - 205 LF @ 1 TREE/40 LF = 5 TREES
  - 2 ADDITIONALLY 1 TREE PER 3000 SF OF LANDSCAPE OPEN SPACE  
OPEN SPACE = 15,197 SF @ 1 TREE/3000 SF = 5 TREES
- PROVIDED**
1. A. HIGHWAY K - 5 RED SUNSET MAPLES (planted to sides due to Fiber Optic Line across frontage)
  - B. ENTRANCE DRIVE - 7 EXISTING TREES TO REMAIN
  - C. DRIVE AT EAST PROPERTY LINE - 5 LITTLELEAF LINDEN
- 2. OPEN SPACE TREES**
- 3 SWAMP WHITE OAK
  - 1 LITTLELEAF LINDEN
  - 1 EX TREE TO REMAIN
  - 5 TOTAL
- B. INTERIOR PARKING LANDSCAPE REQUIRED**
1. NOT LESS THAN 6% OF INTERIOR PARKING TO BE LANDSCAPED  
66 PKG SPACES X 270 = 17,820 SF X 6% = 1,069 SF REQUIRED
  2. MIN 7' WIDTH ON LANDSCAPE ISLANDS
- PROVIDED**
1. 3813 SF OF INTERIOR LANDSCAPE
  2. 3 SWAMP WHITE OAK PLANTED IN INTERIOR ISLANDS WITH SHRUBS AND GROUNDCOVER
- C. TREE PRESERVATION REQUIRED**
1. MIN 15 TREES PER AC OR 20% OF EXISTING TREES TO BE SAVED OR REPLACED ON NEW DEVELOPMENT  
SITE AREA = 1.41 AC OR 61,580 SF @ 15 TREES/AC = 21 TREES
- PROVIDED**
1. TREES PROVIDED:
    - 7 EXISTING TREES TO BE SAVED
    - 5 RED SUNSET MAPLE
    - 6 SWAMP WHITE OAK
    - 6 LITTLELEAF LINDEN
    - 24 TOTAL



CHICK-FIL-A  
O'FALLON, MO  
(#2645)  
FSR S08N-144-R  
2106 HIGHWAY K  
O'FALLON, MO  
63366

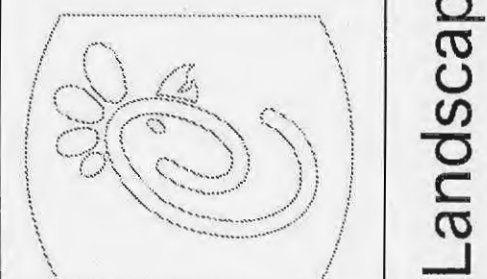


**manley**  
**landdesign**  
Landscape Architects  
51 Old Canton St  
Alpharetta, GA 30009  
770-442-8171

SIGNATURE BLOCK



5200 BUFFINGTON RD.  
ATLANTA, GA 30349-2998  
24 HOUR EMERGENCY CONTACT:  
SCOTT D. PATMAN PH:404-305-4594



P&Z No. 1810.01  
Date: 11.16.10  
City No.

Page No.

**L-1.0**

Revision:  
2.10.11 - New Site Plan  
2.18.11 - Dumpster Relocation  
3.11.11 - Comments  
6.2.11 - New Site Plan

Landscape Plan