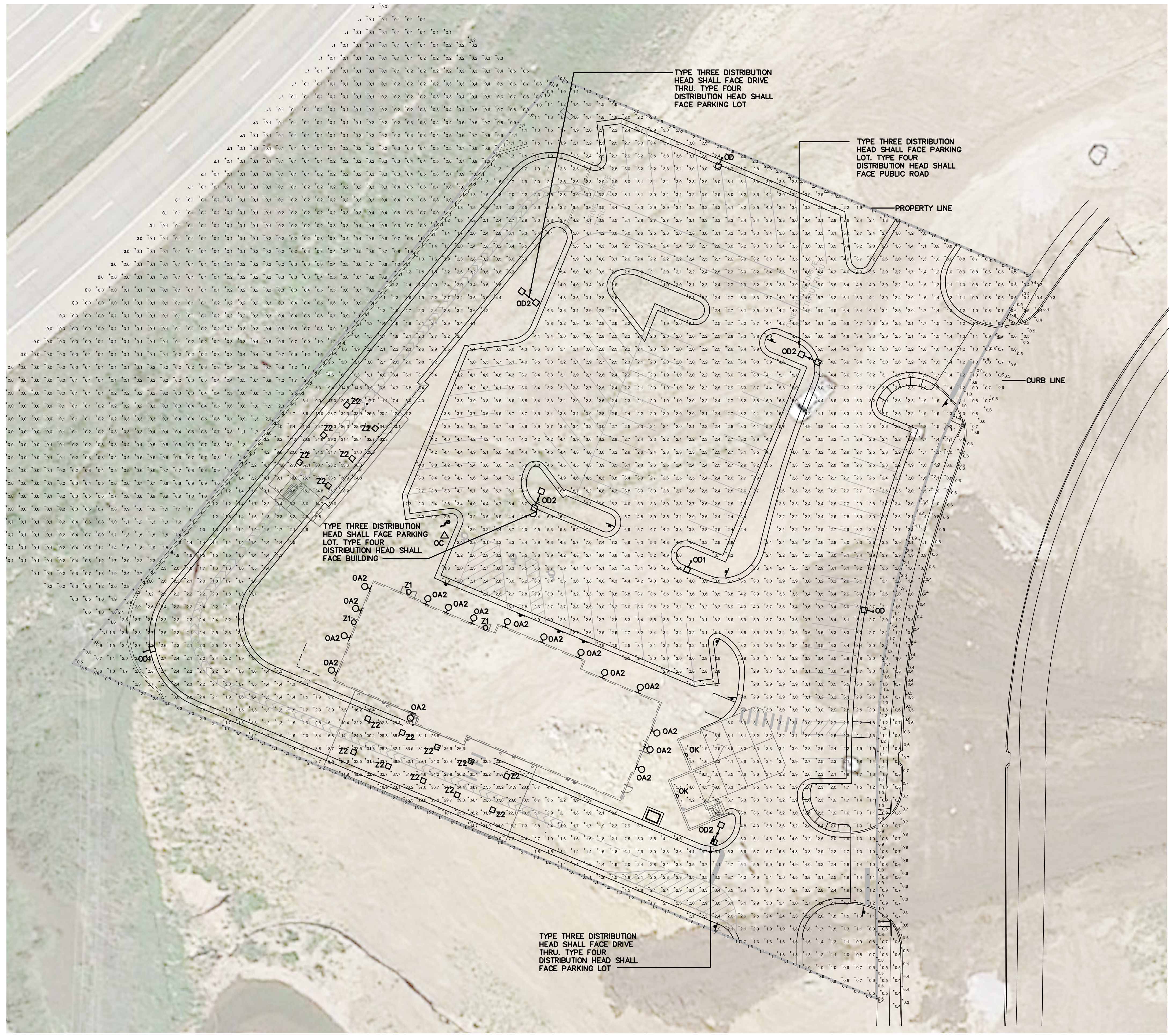


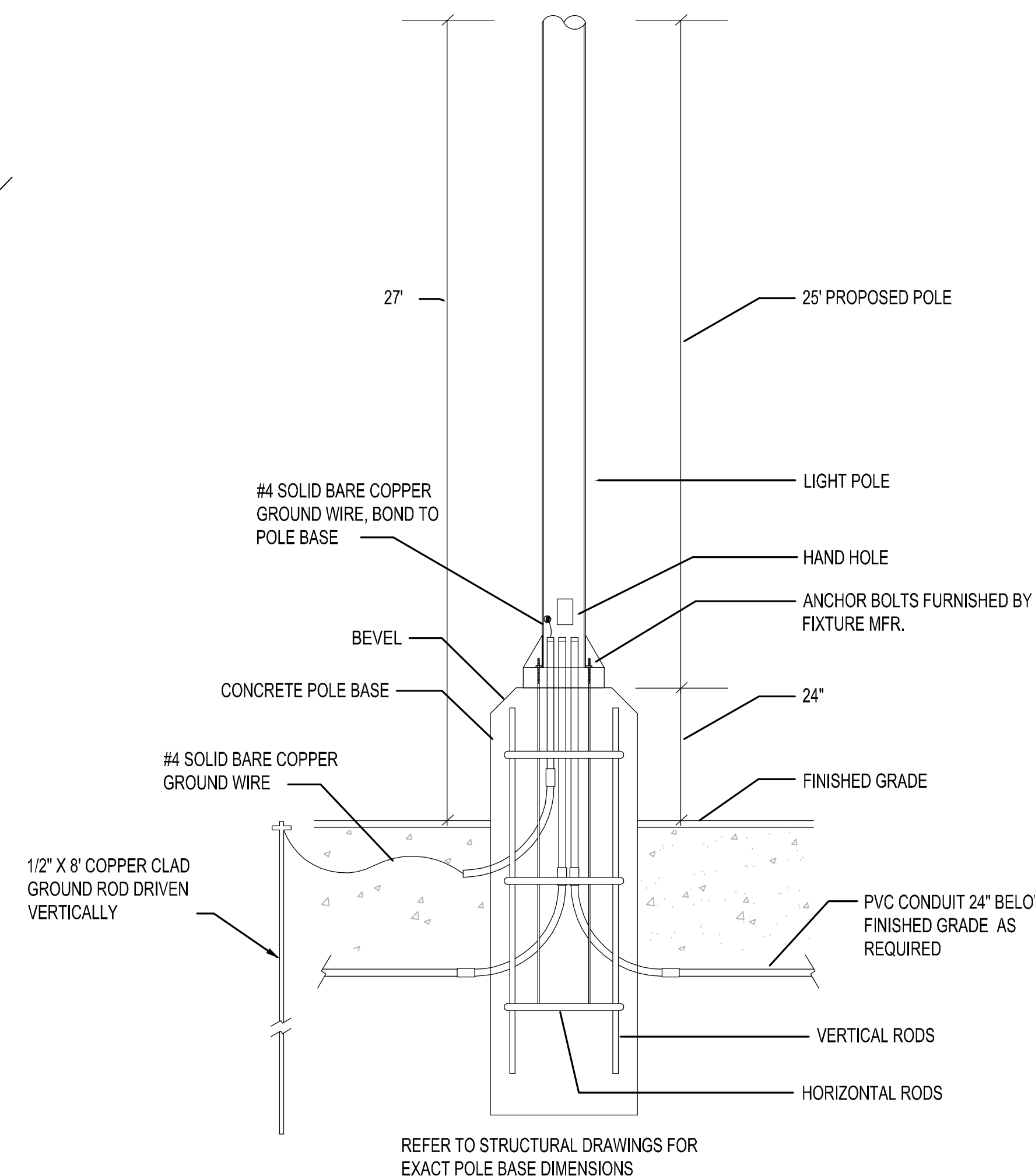
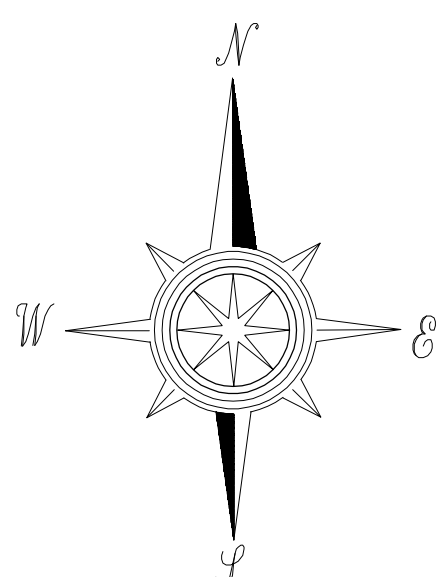
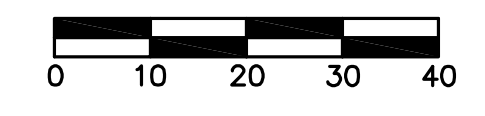


Chick-fil-A

Chick-fil-A
5200 Buffington Road
Atlanta, Georgia 30349-2998



1 PHOTOMETRIC PLAN
SCALE: 1"=20'-0"



2 TYPICAL POLE BASE DETAIL
NOT TO SCALE

PARKING SPOTS PHOTOMETRIC STATISTIC (MAINTAINED)	
MN	1.8 FC

CURB LINE PHOTOMETRIC STATISTIC (MAINTAINED)	
MAX	0.7 FC
MN	0.3 FC

PHOTOMETRIC STATISTICS (MAINTAINED) IN PARKING LOT (NOT INCLUDING UNDER CANOPY LIGHTING)	
AVERAGE	3.1 FC
MAX	7.5 FC
MN	0.8 FC

FIXTURE	HEIGHT (UNLESS NOTED OTHERWISE)	LIGHT LOSS FACTOR	COLOR	LIGHT FIXTURE SPECIFICATION	POLE	COMMENTS
OC	ON GRADE	.9	4000K	HUBBELL - FLI-42L-95-4K7-N-U-K-DB		
OD	27'	.9	4000K	COOPER/LUMARK - PRV-C400-UNV-T3-SA-BK-HSS	KW - SSP25-4.0-7-BLK-DM10	
OD1	27'	.9	4000K	COOPER/LUMARK - PRV-C600-UNV-T4-SA-BK	KW - SSP25-4.0-7-BLK-DM10	
OD2	27'	.9	4000K	(2) COOPER/LUMARK - PRV-C600-UNV-T3-SA-BK & PRV-C600-UNV-T4-SA-BK	KW - SSP25-4.0-7-BLK-DM2180	
OA2	8'	.9	3000K	PROGRESS LIGHTING - P5641-31/30K		
OK	8'	.9	3000K	HUBBELL - LNC-7LU-3K-3-1		
Z1	10'	.9	3000K	PROVIDED WITH CANOPY		
Z2	9.5'	.5	3000K	LSI - CRUS-SC-LED-LW30-UE-WHT		

CHICK-FIL-A
HAWKS RIDGE FSU
SE CORNER OF HIGHWAY N &
SOMMERS ROAD
O'FALLON, MO 63367

FSR# 04723

REVISION SCHEDULE		DESCRIPTION
NO.	DATE	
09/22/2021		ISSUED FOR TOWN APPROVAL
10/15/2021		ISSUED FOR TOWN APPROVAL
10/20/2021		ISSUED FOR TOWN APPROVAL

ARCHITECT'S PROJECT # **21-5359.00**
PRINTED FOR TOWN REVIEW
DATE 10/20/2021
DRAWN BY MSJGD

SHEET
PHOTOMETRIC PLAN
SHEET NUMBER
E-102