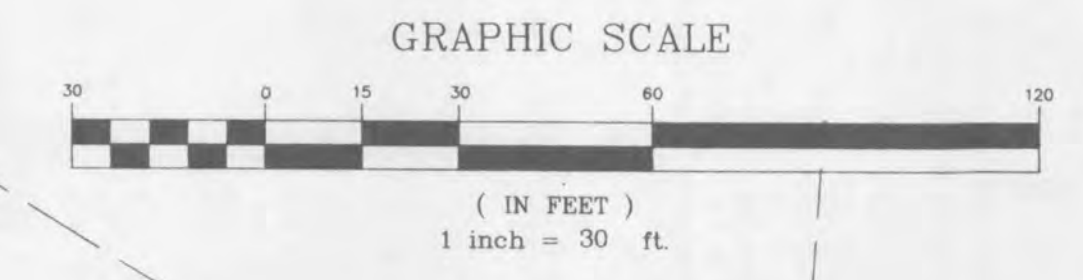
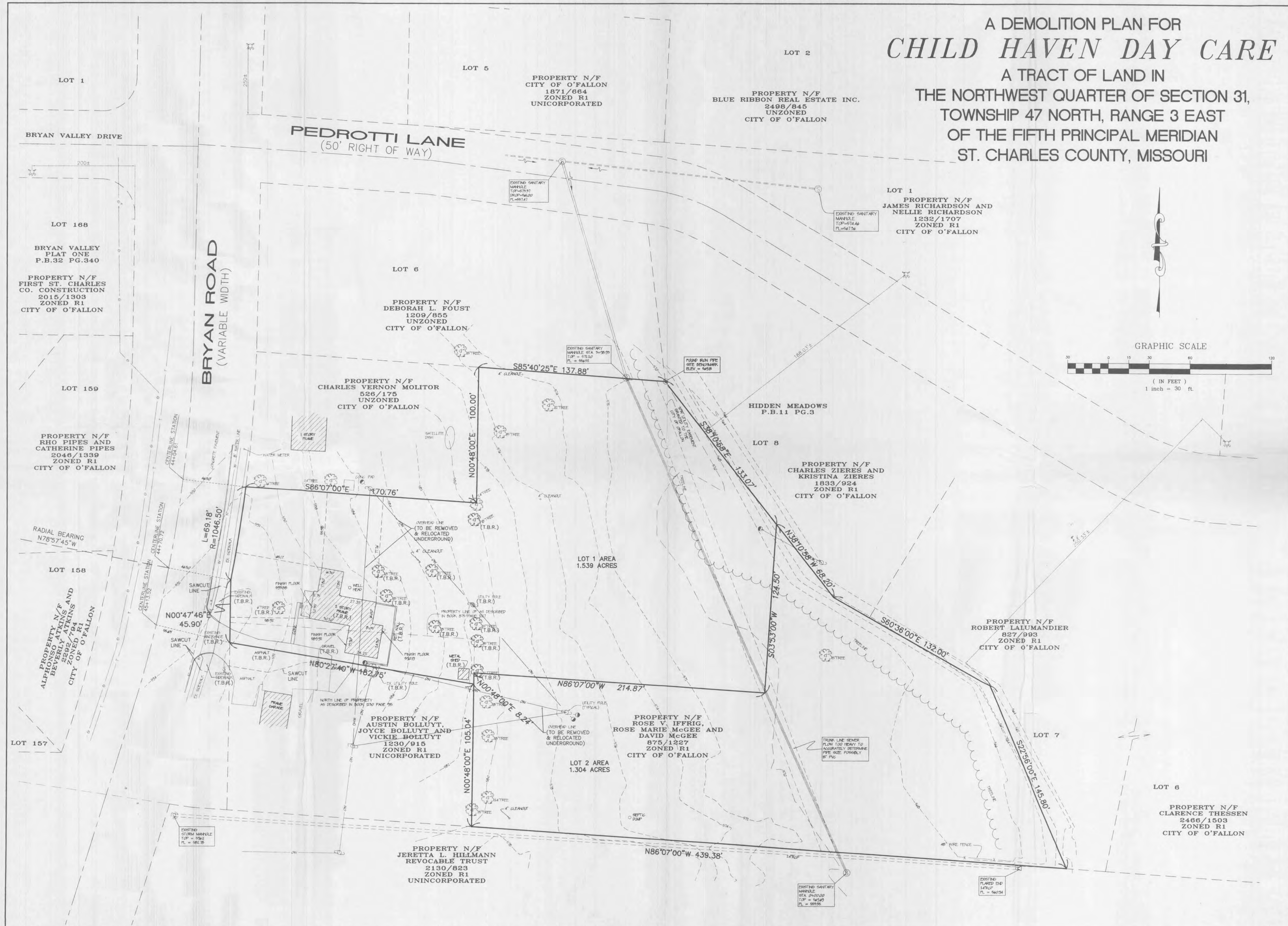


# A DEMOLITION PLAN FOR CHILD HAVEN DAY CARE

A TRACT OF LAND IN  
THE NORTHWEST QUARTER OF SECTION 31,  
TOWNSHIP 47 NORTH, RANGE 3 EAST  
OF THE FIFTH PRINCIPAL MERIDIAN  
ST. CHARLES COUNTY, MISSOURI



PREPARED FOR: **CHILD HAVEN DAY CARE**  
JIM PODHORSKY  
6 WOOD GREEN COURT  
O'FALLON, MISSOURI

DISCLAIMER OF RESPONSIBILITY  
I hereby specify that the documents intended to be authorized by my seal are limited to this sheet, and I hereby disclaim any responsibility for all other drawings, specifications, estimates, reports or other documents, or instruments relating to or intended to be used for any part or parts of the architectural or engineering project or survey.

Copyright 2002  
Jim Podhorsky, Inc.  
All Rights Reserved.

REVISIONS	
2-25-02	PER CITY COMMENTS
3-12-02	PER CITY COMMENTS



1052 South Cloverleaf Drive  
St. Peters, MO. 63376-6445  
636-928-5552  
FAX 928-1718

1-24-02  
DATE  
01-11610  
PROJECT NUMBER  
2 OF 7  
SHEET OF  
11610CON.DWG  
FILE NAME  
ALJ  
DRAWN  
ALJ CLH  
DESIGNED CHECKED

E:\dwg\1160oplus\11610 - child haven day care\construction\11610con.dwg Tue Mar 12 11:49:05 2002 STA. 36 ALJ