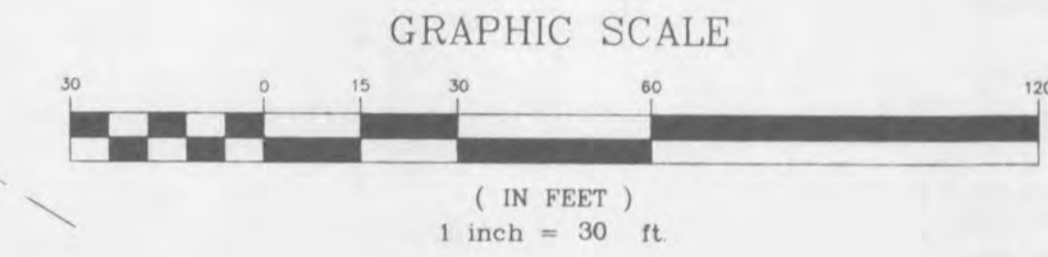
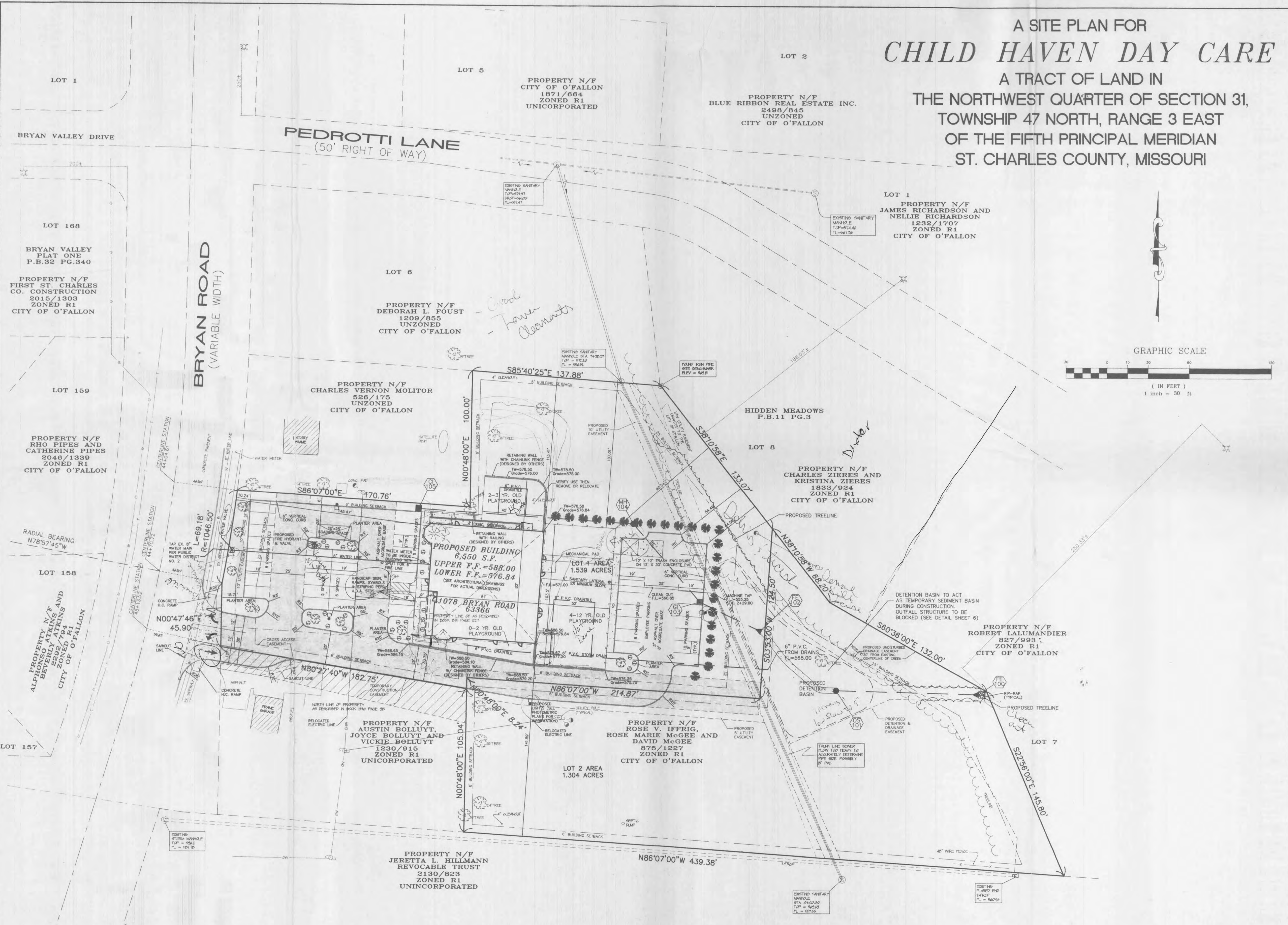


A SITE PLAN FOR  
**CHILD HAVEN DAY CARE**  
 A TRACT OF LAND IN  
 THE NORTHWEST QUARTER OF SECTION 31,  
 TOWNSHIP 47 NORTH, RANGE 3 EAST  
 OF THE FIFTH PRINCIPAL MERIDIAN  
 ST. CHARLES COUNTY, MISSOURI



PREPARED FOR: **CHILD HAVEN DAY CARE**  
 JIM PODHORSKY  
 6 WOOD GREEN COURT  
 O'FALLON, MISSOURI

DISCLAIMER OF RESPONSIBILITY  
 I hereby certify that the documents intended to be authorized by my seal are limited to the work shown on this drawing. I am not responsible for any other drawings, specifications, estimates, reports or other documents or instruments relating to or intended to be used for any part or parts of the architectural or engineering project or survey.

REVISIONS

2-25-02	PER CITY COMMENTS
3-12-02	PER CITY COMMENTS
3-15-02	PER CITY COMMENTS



1052 South Cloverleaf Drive  
 St. Peters, MO. 63376-6445  
 636-928-5552  
 FAX 928-1718

DATE	1-24-02
PROJECT NUMBER	01-11610
SHEET OF	3 OF 7
FILE NAME	11610CON.DWG
DRAWN	ALJ
DESIGNED	ALJ CLH
CHECKED	

E:\Dwg\115001\115001.dwg - child haven day care\construction\115001.dwg - Fri, Mar 15 09:12:26 2002 - STA: 38 - ALJ