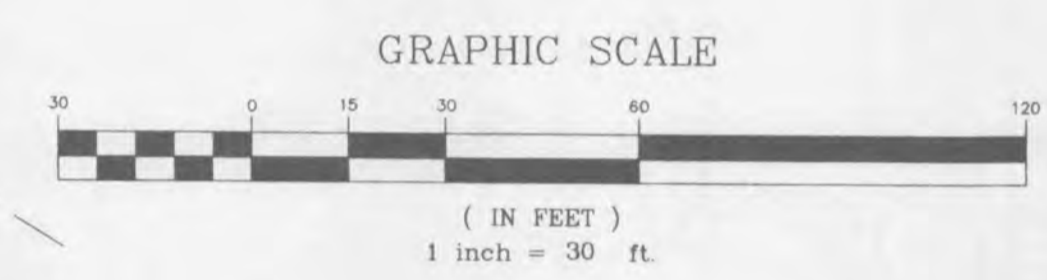
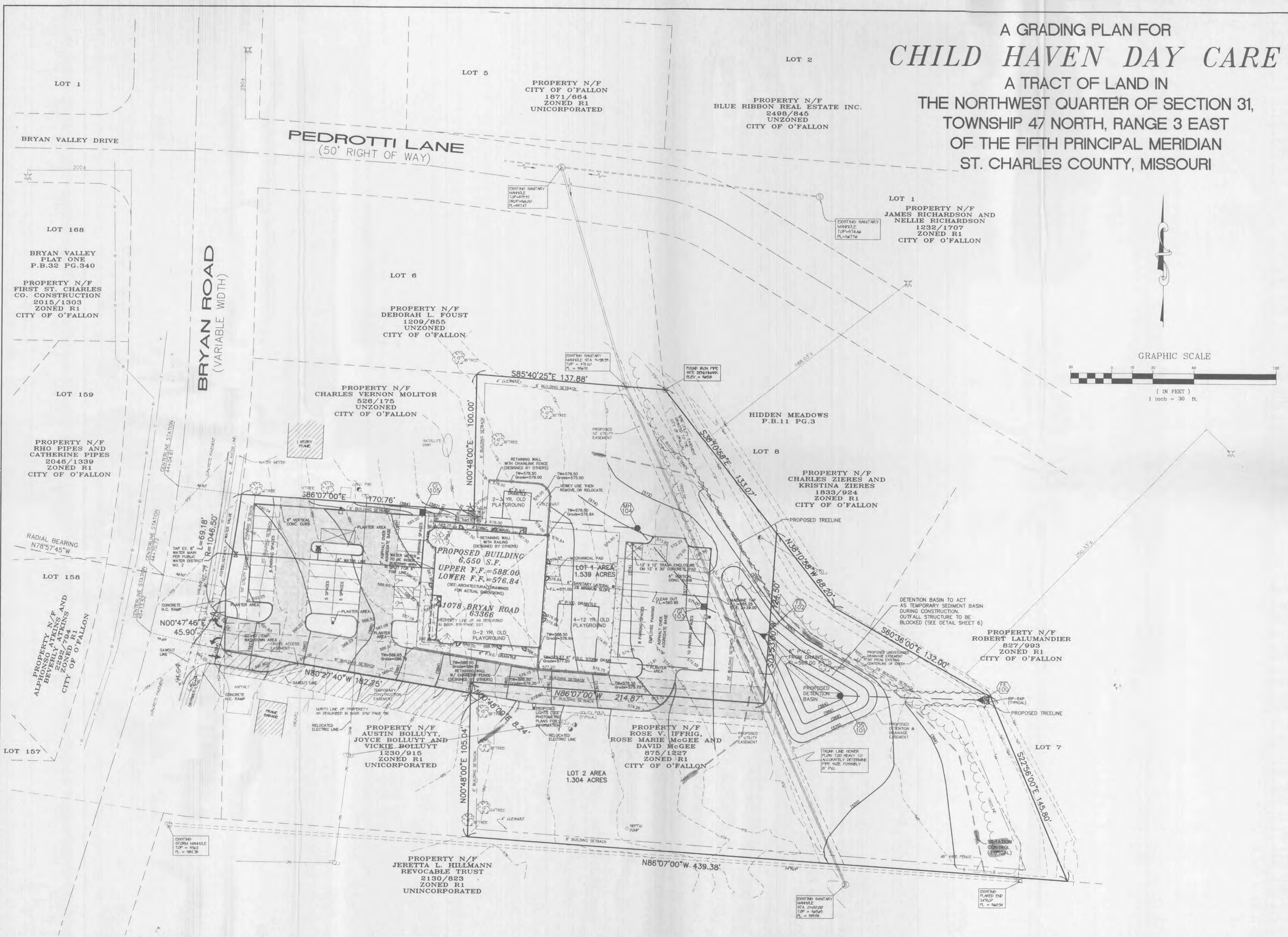


# A GRADING PLAN FOR CHILD HAVEN DAY CARE

A TRACT OF LAND IN  
THE NORTHWEST QUARTER OF SECTION 31,  
TOWNSHIP 47 NORTH, RANGE 3 EAST  
OF THE FIFTH PRINCIPAL MERIDIAN  
ST. CHARLES COUNTY, MISSOURI



PREPARED FOR: **CHILD HAVEN DAY CARE**  
JIM PODHORSKY  
6 WOOD GREEN COURT  
O'FALLON, MISSOURI

DISCLAIMER OF RESPONSIBILITY  
I hereby specify that the documents intended to be authorized by my seal are limited to this sheet, and I hereby disclaim any responsibility for all other drawings, specifications, estimates, reports or other documents or instruments relating to or intended to be used for any part or parts of the architecture or engineering project or survey.

Copyright 2002  
Box Engineering Company, Inc.  
All Rights Reserved

REVISIONS	
2-25-02	PER CITY COMMENTS
3-12-02	PER CITY COMMENTS
3-15-02	PER CITY COMMENTS

**ENGINEERING  
PLANNING  
SURVEYING**

1052 South Cloverleaf Drive  
St. Peters, MO. 63376-6445  
636-928-5552  
FAX 928-1718

1-24-02	DATE
01-11610	PROJECT NUMBER
4	OF 7 SHEET OF
11610CON.DWG	FILE NAME
ALJ	DRAWN
ALJ	DESIGNED
CLH	CHECKED

E:\dwg\317500plus\11610 - child haven day care\construct\01\11610con.dwg Fri Mar 15 09:27:05 2002 STA. 3B ALJ