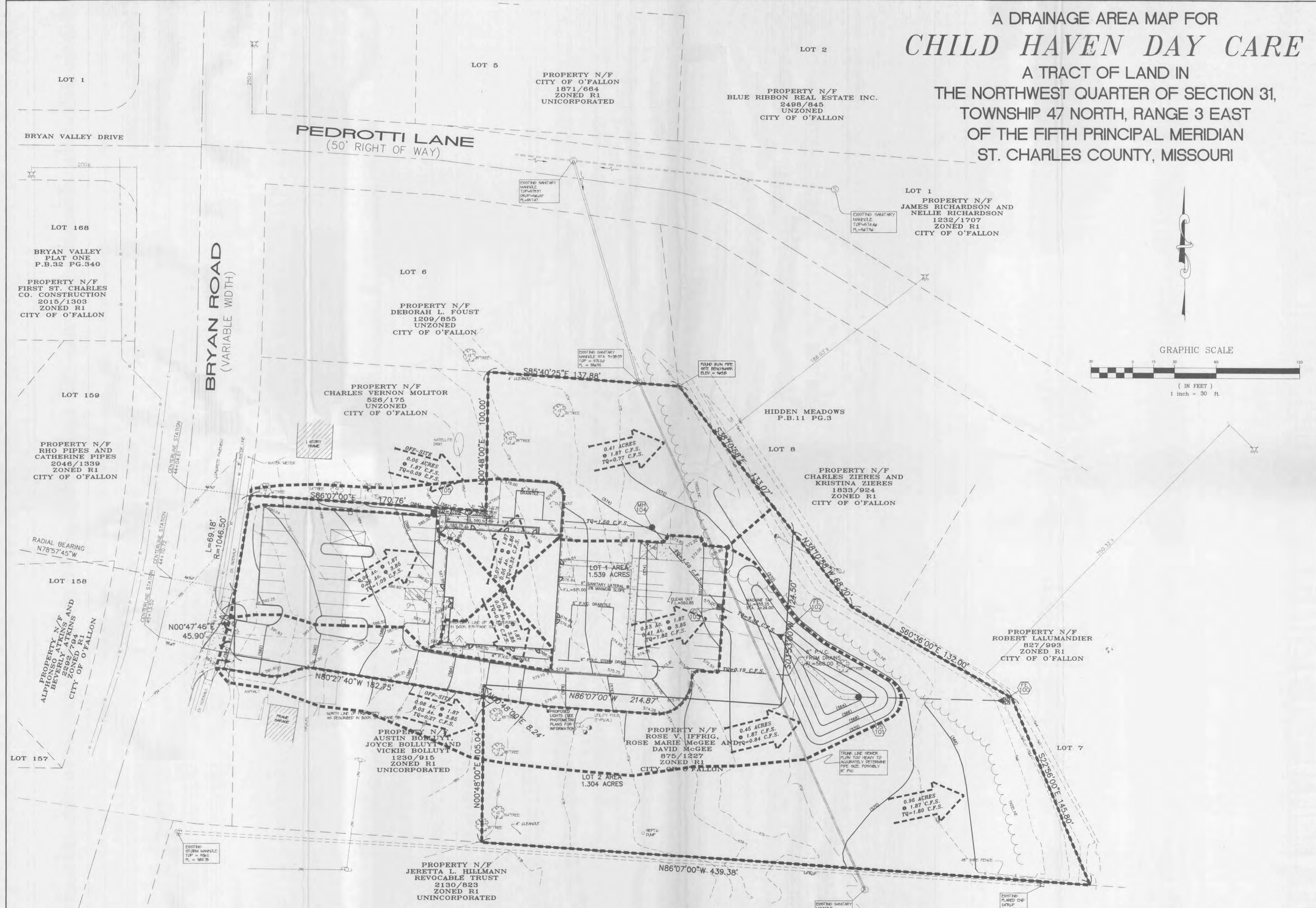


A DRAINAGE AREA MAP FOR CHILD HAVEN DAY CARE

A TRACT OF LAND IN
THE NORTHWEST QUARTER OF SECTION 31,
TOWNSHIP 47 NORTH, RANGE 3 EAST
OF THE FIFTH PRINCIPAL MERIDIAN
ST. CHARLES COUNTY, MISSOURI



PREPARED FOR: **CHILD HAVEN DAY CARE**
JIM PODHORSKY
6 WOOD GREEN COURT
O'FALLON, MISSOURI

DISCLAIMER OF RESPONSIBILITY
I hereby specify that the documents intended to be authorized by my seal are limited to this sheet, and I hereby disclaim any responsibility for all other drawings, specifications, estimates, reports or other documents or instruments relating to or intended to be used for any part or parts of the architectural or engineering project or survey.

Copyright 2002
B&A Engineering Company, Inc.
All Rights Reserved

REVISIONS	
2-25-02	PER CITY COMMENTS
3-12-02	PER CITY COMMENTS
3-15-02	PER CITY COMMENTS

**ENGINEERING
PLANNING
SURVEYING**

1052 South Cloverleaf Drive
St. Peters, MO. 63378-6445
636-928-5552
FAX 928-1718

1-24-02	DATE
01-11610	PROJECT NUMBER
5	SHEET OF 7
11610CON.DWG	FILE NAME
ALJ	DRAWN
CLH	DESIGNED
	CHECKED

THIS SHEET FOR DRAINAGE PURPOSES ONLY, NOT TO BE USED AS CONSTRUCTION PLANS!!!

E:\proj\11500p\11610 - child haven day care\construction\11610con.dwg, Fri Mar 15 09:25:14 2002 STA. 39 ALJ