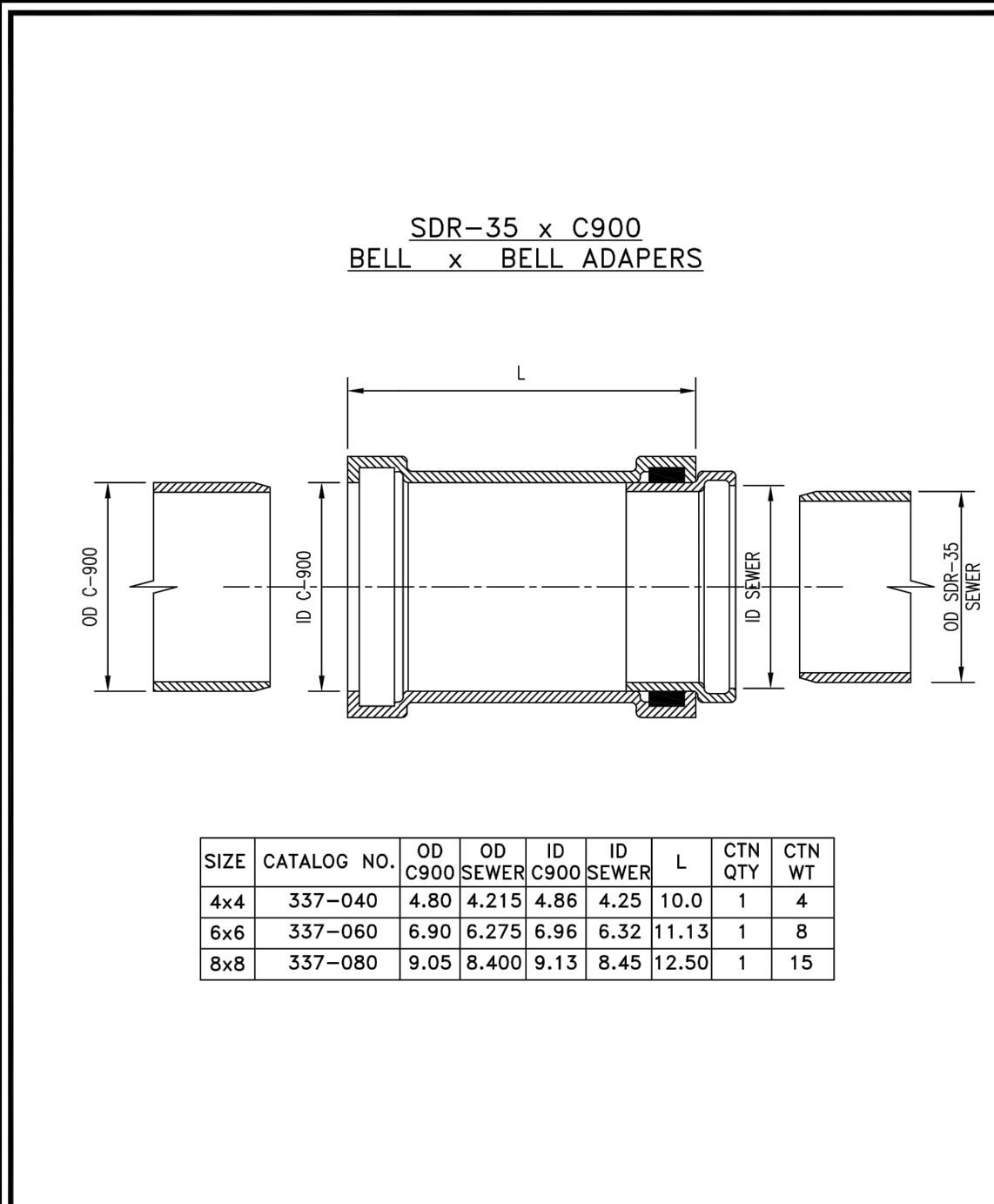
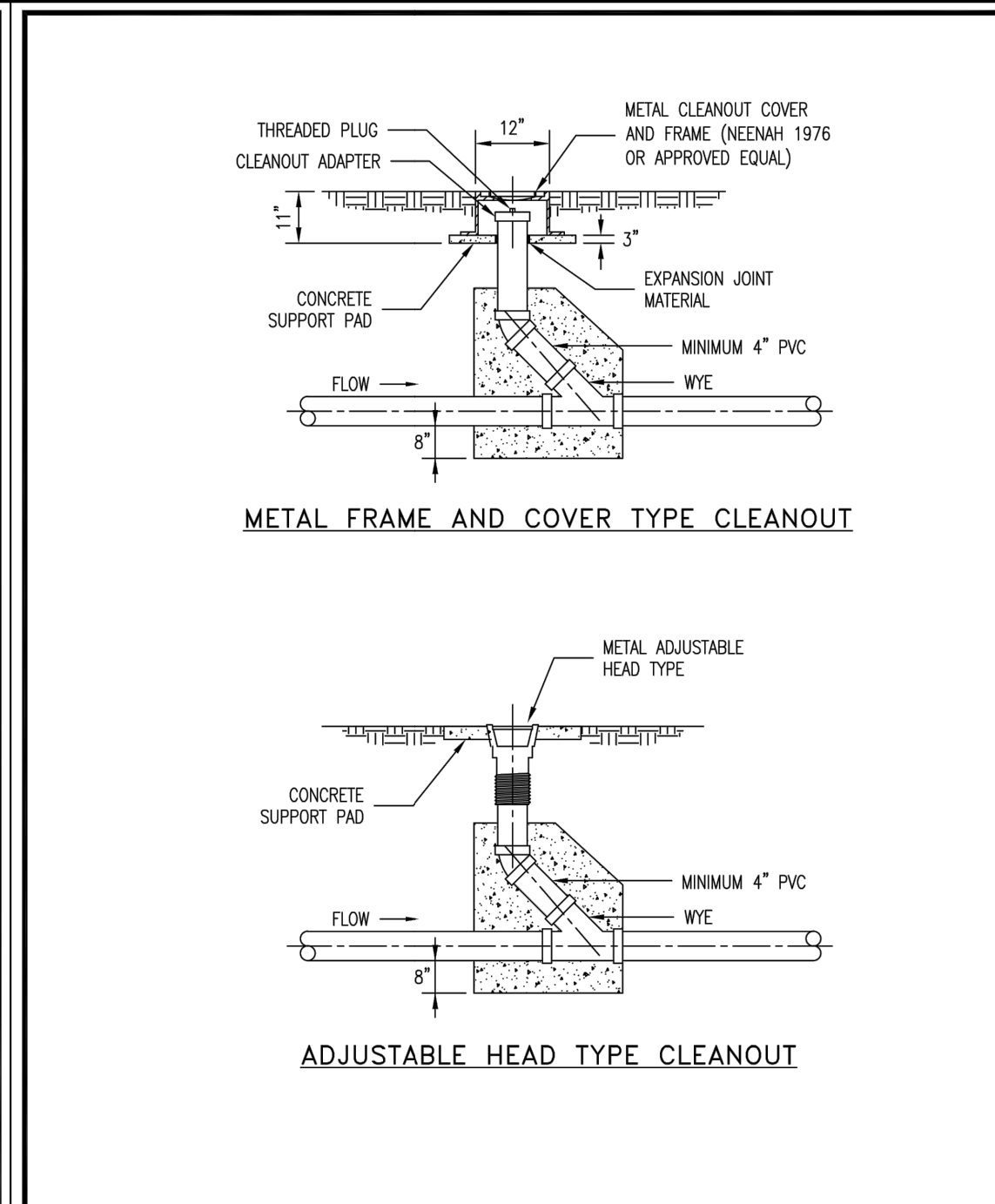


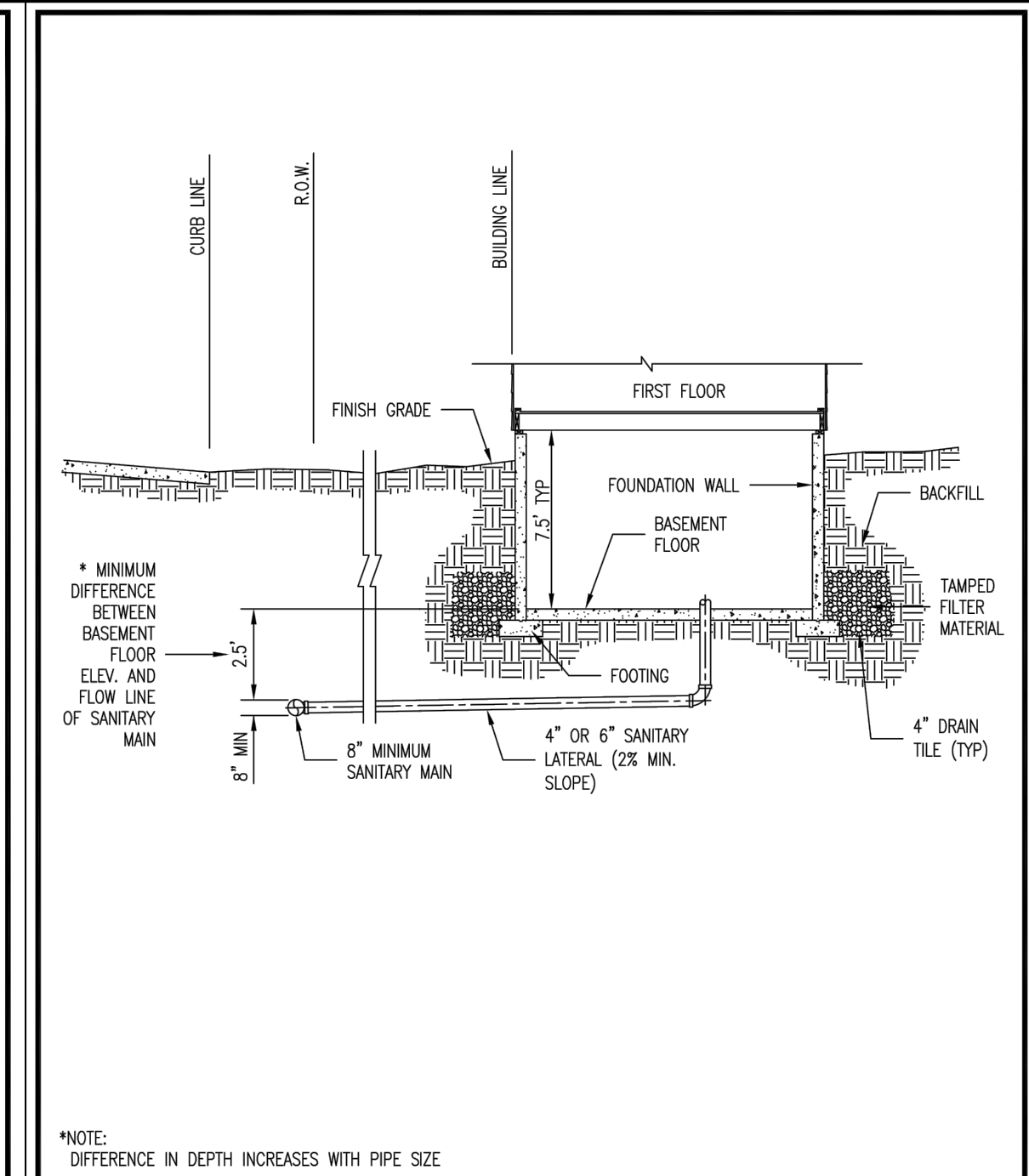
Duckett Creek Sanitary District
SDR-35 x C900 BELL AND SPIGOT SPECIAL 4", 6" & 8" ADAPTORS
Rev: BSM App: KA
Ckd: MDOB Date: DEC. 2015
19B



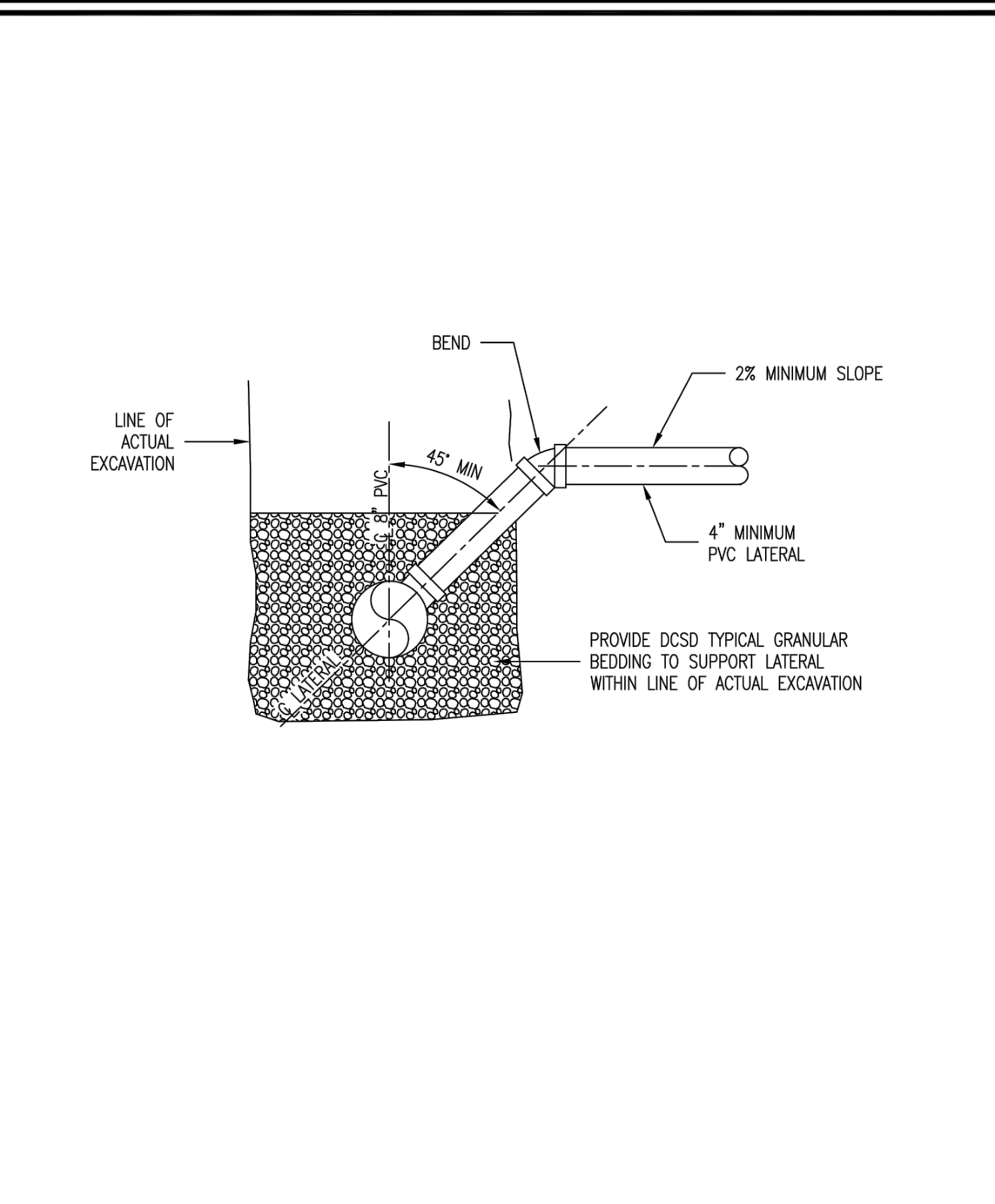
Duckett Creek Sanitary District
SDR-35 x C900 BELL AND BELL 4", 6" & 8" ADAPTORS
Rev: BSM App: KA
Ckd: MDOB Date: DEC. 2015
19C



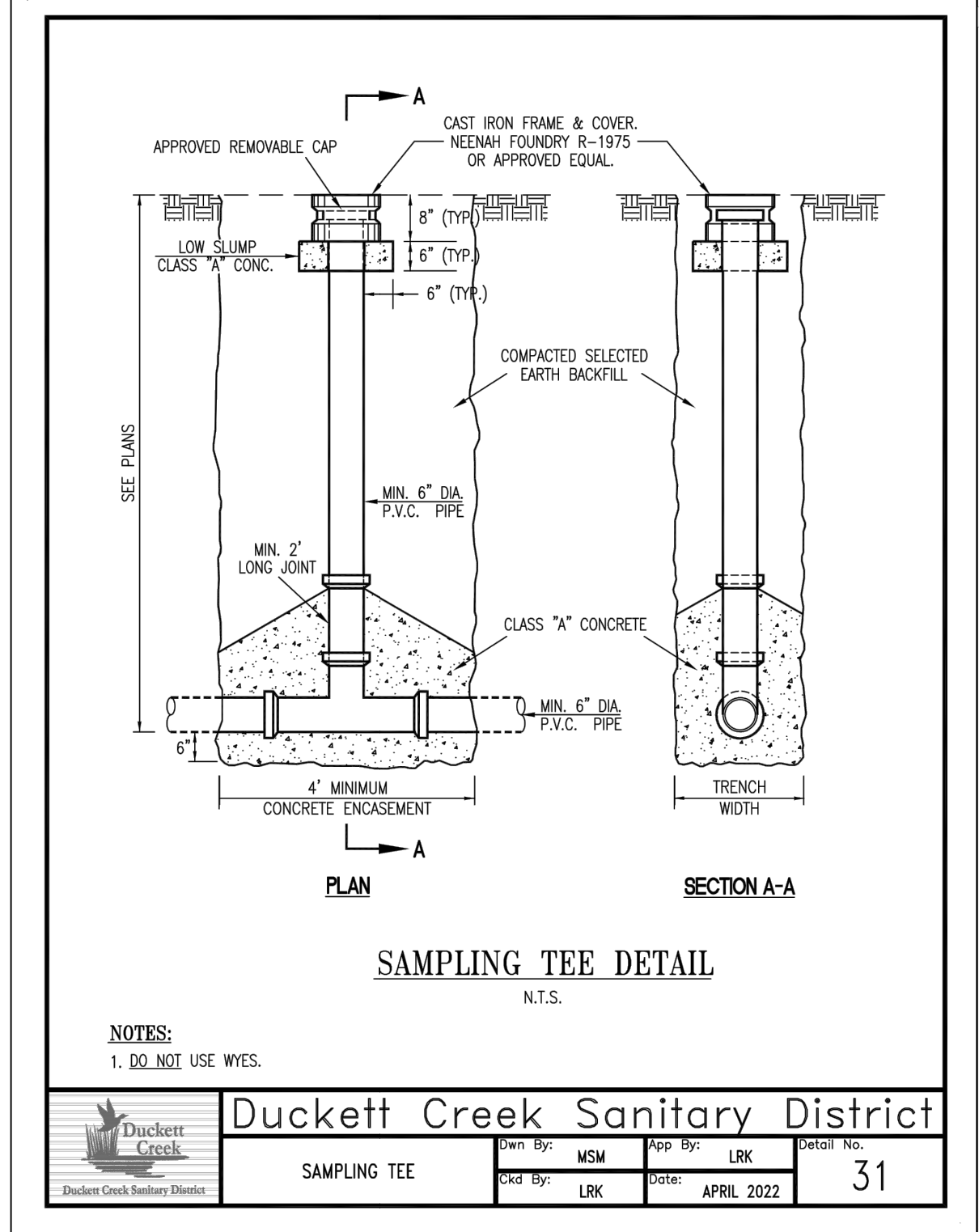
Duckett Creek Sanitary District
TYPICAL SEWER LATERAL CLEANOUT DETAIL
Rev: BSM App: KLA
Ckd: MDOB Date: DEC. 2015
25



Duckett Creek Sanitary District
TYPICAL SANITARY SEWER LATERAL PROFILE
Rev: BSM App: KLA
Ckd: MDOB Date: DEC. 2015
26



Duckett Creek Sanitary District
SANITARY SEWER LATERAL RISER DETAIL
Rev: BSM App: KA
Ckd: MDOB Date: DEC. 2015
27



Duckett Creek Sanitary District
SAMPLING TEE
Rev: MSM App: LRK
Ckd: LRK Date: APRIL 2022
31

Installation Techniques - Link-Seal® Modular Seals

Online Installation Video Visit www.linkseal.com

Link-Seal® Model	Tool Size/Type Req.
LS-200, LS-270	4mm, Allen
LS-300, LS-315	8mm, Allen
LS-325, LS-440, LS-360	13mm, Hex
LS-400, LS-410, LS-425, LS-475	17mm, Hex
LS-500, LS-525, LS-575	19mm, Hex
LS-600	30mm, Hex
LS-650	19mm, Hex

Always Wear Safety Equipment When Using Link-Seal® Modular Seals

PROJECT TITLE:
CHILDREN'S LIGHTHOUSE
EARLY LEARNING CENTER
2570 SOMMERS ROAD
OFALLON, MISSOURI 63368

ENGINEERING
PLANNING
SURVEYING

221 Point West Blvd.
St. Charles, MO 63301
636-828-5552
FAX 636-828-1718

REFERENCE DRAWINGS ONLY, ENGINEERS SEAL DOES NOT APPLY TO THESE DETAILS

REVISIONS

No.	Date	Description
11-3-23		city, county, dcsd & pswd comments

Developer / Owner:
JAFFRI LLC, ASHLEY FANGMAN
4010 CORKWOOD CT.
COLUMBIA, MO 65203
417-766-8874 - ashleyfangmann@gmail.com

DUCKETT CREEK SANITARY DISTRICT
DETAILS

P+Z No. # 23-004744
Approval Date: July 6, 2023
City No. #
Page No. 16 of 21