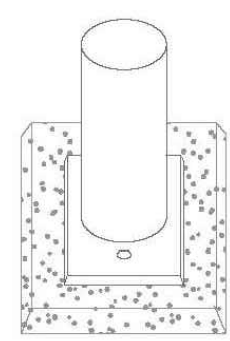




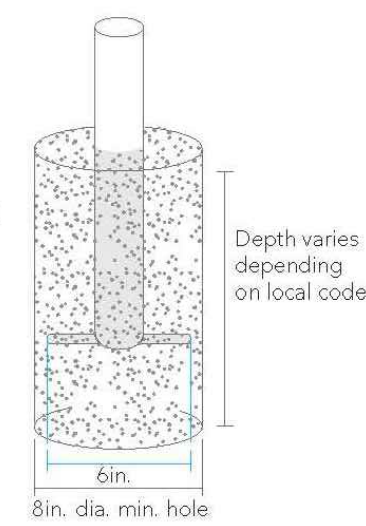
**Product Details:**

Dimensions	Length 24" / Depth 1.9" / Height 36" (46" In Ground) / Mounting Plates 6"
Weight	Surface Mount: 19-lbs In-ground: 22-lbs
Styling	Contemporary
Capacity	Holds 2 Bikes
Finish	Durable baked-on powder coat or hot dipped galvanized
Construction	Standard-Duty 1.5" Schedule 40 Pipe (1.9" OD) Steel

**Surface Mount:**  
Bolts through bottom plate into pre-drilled concrete into ground anchors. Use appropriate length and size bolt for local requirements.



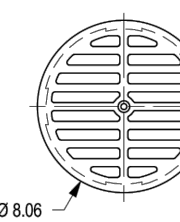
**In-ground Mount:**  
Embedded in hole filled with concrete. Depth of the hole varies depending on local code.



Depth varies depending on local code

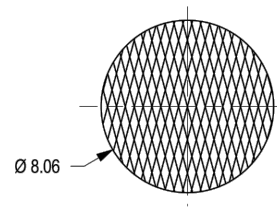
6in. dia. min. hole

0699CGS



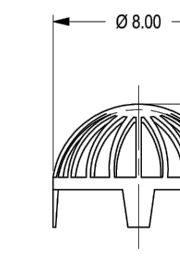
**\*STANDARD**  
APPROX. DRAIN AREA = 18.77 SQ. IN.  
APPROX. WEIGHT = 3.08 LBS.

0699CGC



**SOLID**  
APPROX. WEIGHT = 3.38 LBS.

0699CGD



**DOMED**  
APPROX. DRAIN AREA = 30.00 SQ. IN.  
APPROX. WEIGHT = 4.54 LBS.

**NYLOPLAST 8" GRATES/COVERS**

STANDARD GRATE HAS A LIGHT DUTY RATING. SOLID COVER HAS A LIGHT DUTY RATING. DOMED GRATE HAS A LIGHT DUTY RATING. QUALITY MATERIALS SHALL CONFORM TO ASTM A536 GRADE 250-285. MATERIAL: DUCTILE IRON. PAINT: CASTINGS ARE FURNISHED WITH A BLACK PAINT. LOCKING DEVICE AVAILABLE UPON REQUEST FOR STANDARD & SOLID ONLY.

\* SIZE OF OPENING MEETS REQUIREMENTS OF AMERICAN DISABILITY ACT AS STATED IN FEDERAL REGISTER PART III, DEPARTMENT OF JUSTICE, 28 CFR PART 36, NONDISCRIMINATION ON THE BASIS OF DISABILITY BY PUBLIC ACCOMMODATIONS AND IN COMMERCIAL FACILITIES, FINAL RULE.

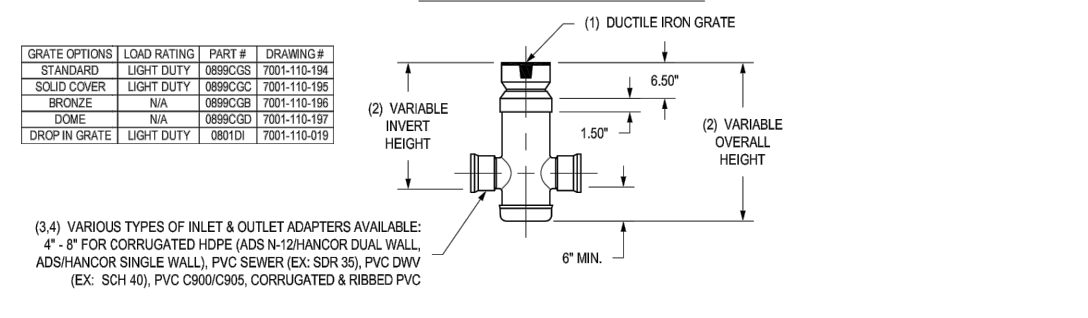
DATE	15AUG08	BY	GA	PROJECT NO.	15A
DATE	15AUG08	BY	GA	PROJECT NO.	15A
DATE	15AUG08	BY	GA	PROJECT NO.	15A



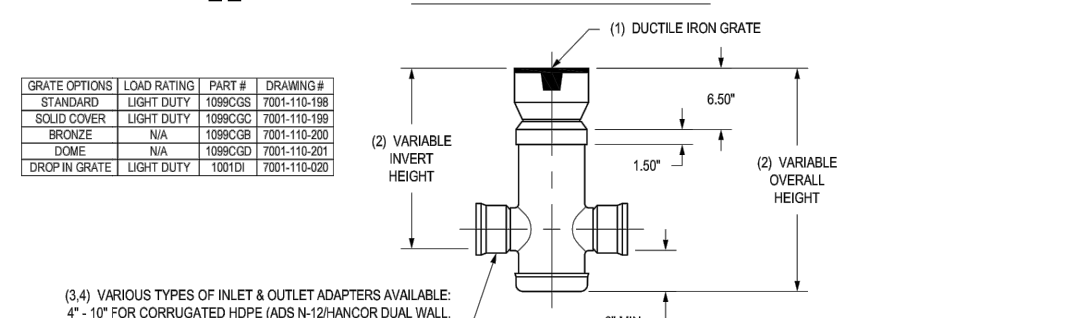
2108 WENONA AVE. ST. CHARLES, MO 63301  
TEL: 636-928-5562 FAX: 636-928-5562  
WWW.NYLOPLAST.COM

NYLOPLAST 8" STANDARD SOLID & DOME  
DWG NO. 789-116467 REV. 8

2806AG\_X



2810AG\_X



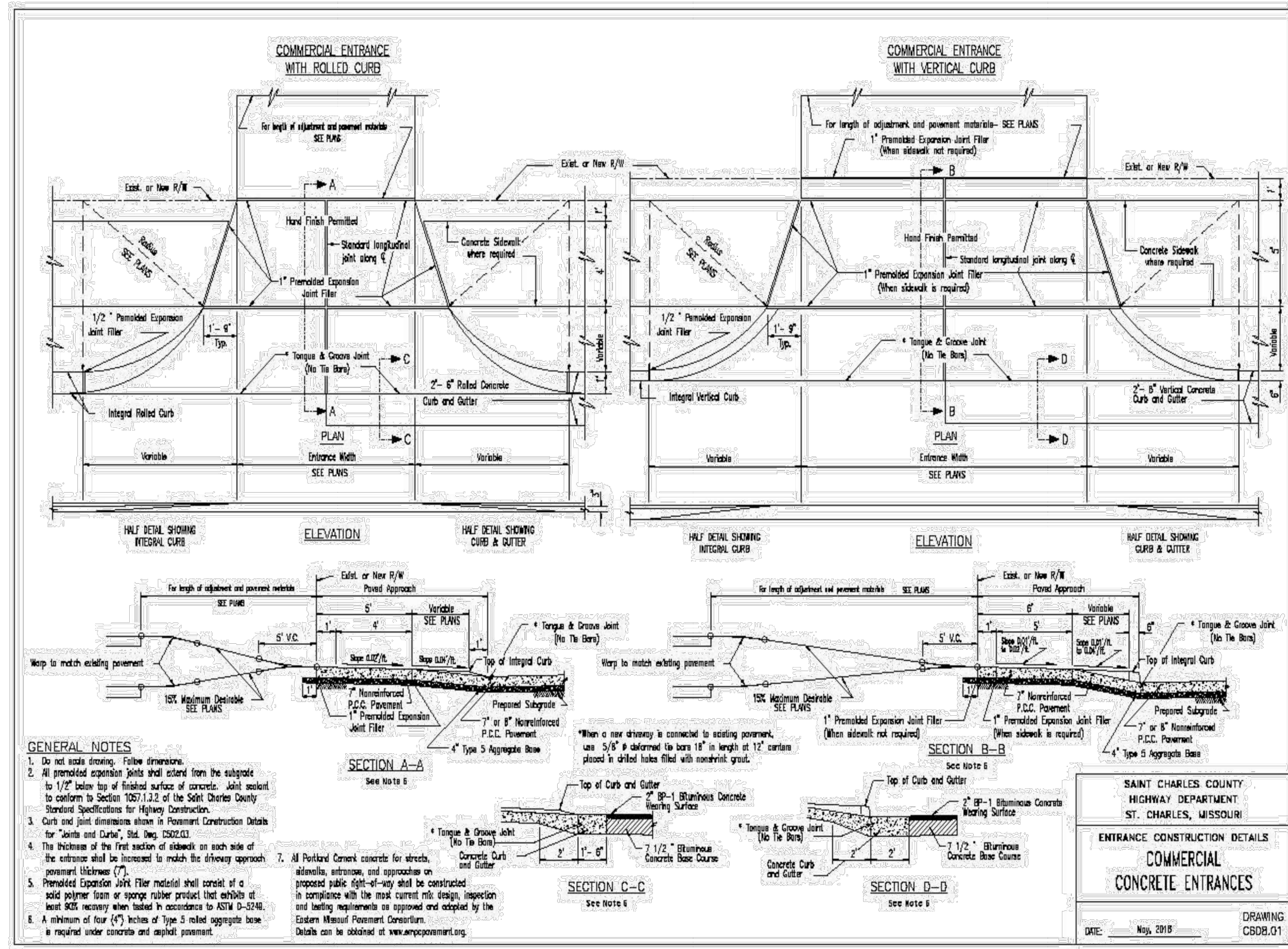
1. QUANTITY OF COVER SHALL BE DETERMINED BY THE USER.
2. CUSTOMER SHALL BE RESPONSIBLE FOR OBTAINING ALL NECESSARY PERMITS AND APPROVALS.
3. DIMENSIONS AND WEIGHTS ARE APPROXIMATE. REFER TO DRAWINGS FOR EXACT DIMENSIONS AND WEIGHTS.
4. CUSTOMER SHALL BE RESPONSIBLE FOR OBTAINING ALL NECESSARY PERMITS AND APPROVALS.
5. DIMENSIONS AND WEIGHTS ARE APPROXIMATE. REFER TO DRAWINGS FOR EXACT DIMENSIONS AND WEIGHTS.

DATE	8/18/08	BY	GA	PROJECT NO.	15A
DATE	8/18/08	BY	GA	PROJECT NO.	15A
DATE	8/18/08	BY	GA	PROJECT NO.	15A



2108 WENONA AVE. ST. CHARLES, MO 63301  
TEL: 636-928-5562 FAX: 636-928-5562  
WWW.NYLOPLAST.COM

NYLOPLAST 10" CUSTOM DRAIN BASIN  
DWG NO. 789-116468 REV. 8

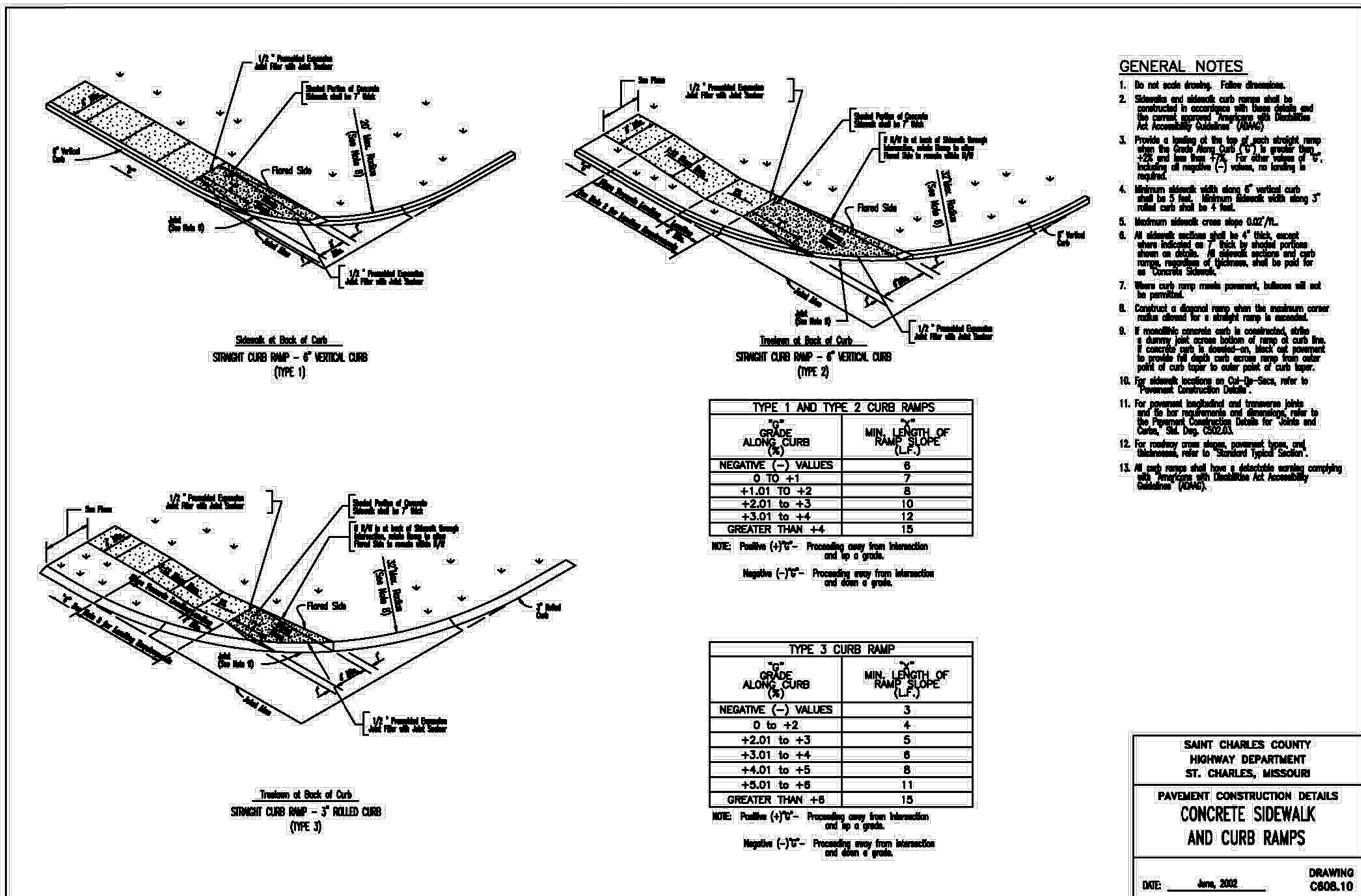


**GENERAL NOTES**

1. Do not scale drawings. Follow dimensions.
2. All precast concrete joints shall extend from the subgrade to 1/2" below top of finished surface of concrete. Joints shall conform to Section 202.1.2.2 of the Saint Charles County Standard Specifications for Highway Construction.
3. Curb and joint dimensions shown in Standard Construction Details for "Curb and Gutter," 1st Ed., 02/02/02.
4. The thickness of the first section of sidewalk on each side of the curb shall be increased to match the adjacent approach pavement thickness (C).
5. Precast Expansion Joint Filter material shall consist of a solid polymer foam or sponge rubber product that enables at least 80% recovery when loaded in accordance to ASTM D-3242.
6. A minimum of 100 (100) lbs of Type 3 graded aggregate base is required under concrete and asphalt pavements.
7. All Portland Cement concrete for streets, sidewalks, driveways, and approaches on proposed public right-of-way shall be constructed in compliance with the most current city, state, and federal requirements as approved and adopted by the Saint Charles County Board of Commissioners. Details can be obtained at www.sccmo.org.



SAINT CHARLES COUNTY  
HIGHWAY DEPARTMENT  
ST. CHARLES, MISSOURI  
ENTRANCE CONSTRUCTION DETAILS  
CONCRETE ENTRANCES  
DWC: July, 2018 DRAWING CS08.01



**TYPE 1 AND TYPE 2 CURB RAMP**

GRADE ALONG CURB (ft.)	MIN. LENGTH OF RAMP SLOPE (ft.)
NEGATIVE (-) VALUES	6
0 TO +1	7
+1.01 TO +2	8
+2.01 TO +3	10
+3.01 TO +4	12
GREATER THAN +4	15

**TYPE 3 CURB RAMP**

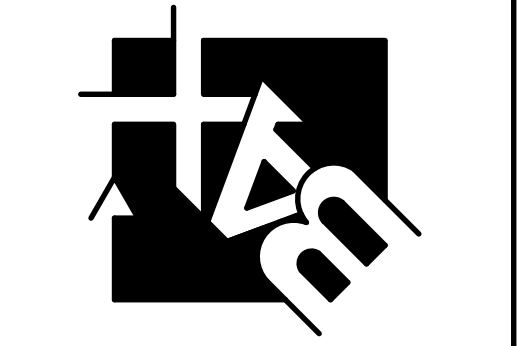
GRADE ALONG CURB (ft.)	MIN. LENGTH OF RAMP SLOPE (ft.)
NEGATIVE (-) VALUES	3
0 TO +2	4
+2.01 TO +3	5
+3.01 TO +4	6
+4.01 TO +5	8
+5.01 TO +6	11
GREATER THAN +6	15

- GENERAL NOTES**
1. Do not scale drawings. Follow dimensions.
  2. Slopes and elevations shall conform to the most current city, state, and federal requirements as approved and adopted by the Saint Charles County Board of Commissioners.
  3. Provide a 1/2" precast expansion joint filter between the curb and the adjacent pavement. The filter shall be a solid polymer foam or sponge rubber product that enables at least 80% recovery when loaded in accordance to ASTM D-3242.
  4. Minimum sidewalk width shall be 5' without curb and 4' with curb. Maximum sidewalk width shall be 5' without curb and 4' with curb.
  5. Minimum sidewalk cross slope 0.02%/ft.
  6. All sidewalks shall be finished with a 1/2" precast expansion joint filter between the curb and the adjacent pavement. The filter shall be a solid polymer foam or sponge rubber product that enables at least 80% recovery when loaded in accordance to ASTM D-3242.
  7. Where curb ramps meet pavement, bullnose will not be permitted.
  8. Concrete to be placed when the maximum concrete temperature is 100°F or less. Concrete shall be placed in a single layer to maximum.
  9. If a precast expansion joint filter is used, the filter shall be a solid polymer foam or sponge rubber product that enables at least 80% recovery when loaded in accordance to ASTM D-3242.
  10. All sidewalk locations on City-De-See, refer to Standard Construction Details.
  11. For pavement thickness and concrete strength, refer to the most current city, state, and federal requirements as approved and adopted by the Saint Charles County Board of Commissioners.
  12. For concrete cure, curing compound, and curing time, refer to the most current city, state, and federal requirements as approved and adopted by the Saint Charles County Board of Commissioners.
  13. All work shall conform to the most current city, state, and federal requirements as approved and adopted by the Saint Charles County Board of Commissioners.

SAINT CHARLES COUNTY  
HIGHWAY DEPARTMENT  
ST. CHARLES, MISSOURI  
PAVEMENT CONSTRUCTION DETAILS  
CONCRETE SIDEWALK  
AND CURB RAMP  
DWC: July, 2018 DRAWING CS08.10

**PROJECT TITLE:**  
CHILDREN'S LIGHTHOUSE  
EARLY LEARNING CENTER  
2570 SOMMERS ROAD  
O'FALLON, MISSOURI 63368

ENGINEERING  
PLANNING  
SURVEYING  
221 Point View Blvd.  
St. Charles, MO 63301  
636-928-5562  
FAX 928-1718



REFERENCE DRAWINGS  
ONLY. ENGINEERS  
SEAL DOES NOT  
APPLY TO THESE  
DETAILS

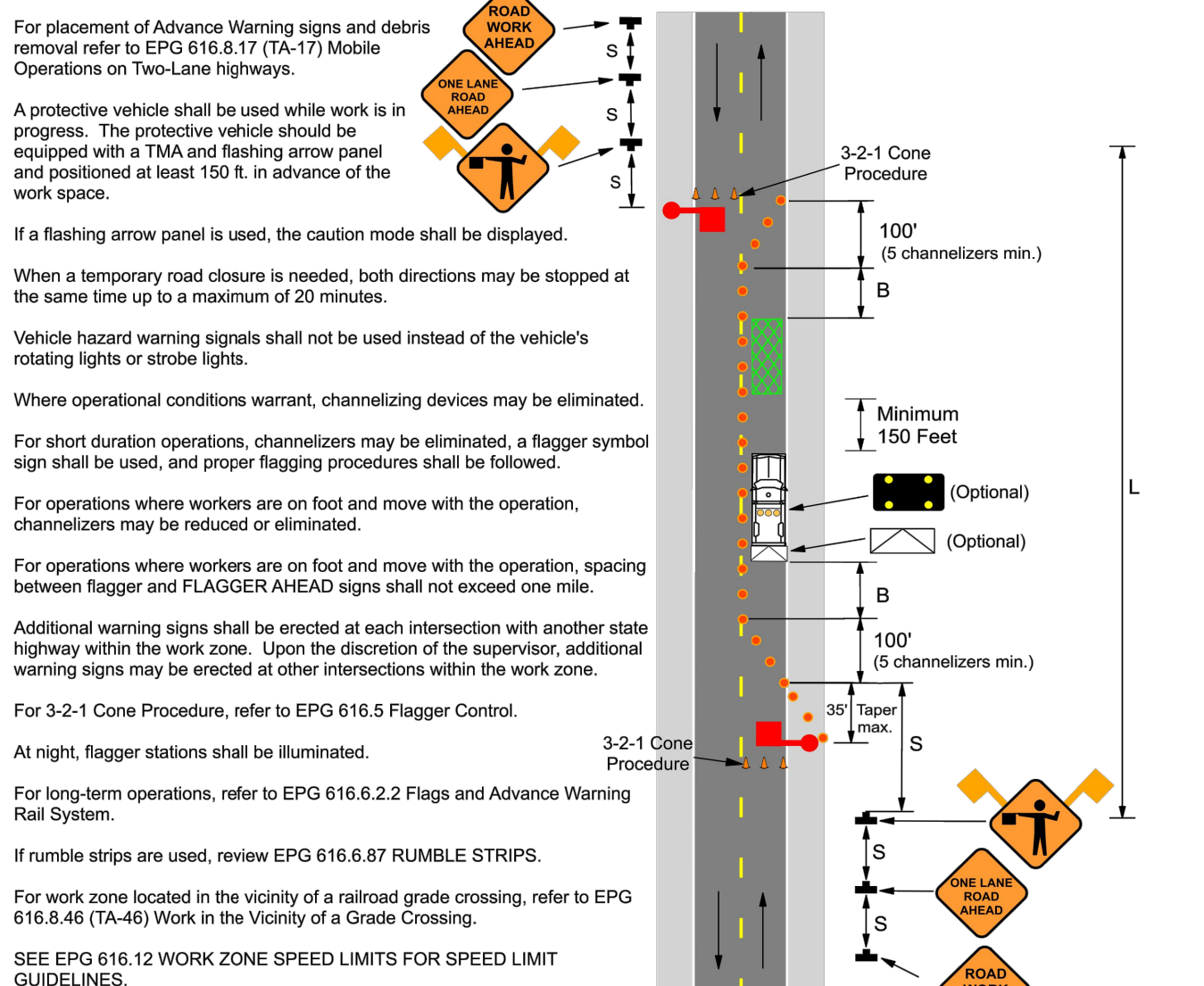
**REVISIONS**

NO.	DATE	DESCRIPTION
11-3-23		city, county, dsad & psdw2 comments

**616.8.10 (TA-10) Lane Closure on Two-Lane Highways Using Flaggers - MT**

SPEED (mph)	SIGN SPACING (ft.)	TAPER LENGTH (ft.)	OPTIONAL BUFFER LENGTH (ft.)	CHANNELIZER SPACING (ft.)
0-35	200	-	280	40
40-45	350	-	400	80
50-55	500	-	560	80
60-70	1000	-	840	120

TYPE OF ROADWAY	SIGN HEIGHT	MAXIMUM WORK ZONE LENGTH (ft.)	Channelizer	Protective Vehicle
URBAN	1' Portable	1 M.	Truck or Trailer Mounted Arrow Panel	Truck Mounted Attenuator (TMA)
RURAL UNDIVIDED	1' Portable	3 M.	Flagger	Work Space



For placement of Advance Warning signs and debris removal refer to EPG 616.8.17 (TA-17) Mobile Operations on Two-Lane Highways.  
A protective vehicle shall be used while work is in progress. The protective vehicle should be equipped with a TMA and flashing arrow panel and positioned at least 150 ft. in advance of the work space.  
If a flashing arrow panel is used, the caution mode shall be displayed.  
When a temporary road closure is needed, both directions may be stopped at the same time up to a maximum of 20 minutes.  
Vehicle hazard warning signals shall not be used instead of the vehicle's rotating lights or strobe lights.  
Where operational conditions warrant, channelizing devices may be eliminated.  
For short duration operations, channelizers may be eliminated, a flagger symbol sign shall be used, and proper flagging procedures shall be followed.  
For operations where workers are on foot and move with the operation, channelizers may be reduced or eliminated.  
For operations where workers are on foot and move with the operation, spacing between flagger and FLAGGER AHEAD signs shall not exceed one mile.  
Additional warning signs shall be erected at each intersection with another state highway within the work zone. Upon the discretion of the supervisor, additional warning signs may be erected at other intersections within the work zone.  
For 3-2-1 Cone Procedure, refer to EPG 616.5 Flagger Control.  
At night, flagger stations shall be illuminated.  
For long-term operations, refer to EPG 616.6.2.2 Flags and Advance Warning Rail System.  
If rumble strips are used, review EPG 616.8.7 RUMBLE STRIPS.  
For work zone located in the vicinity of a railroad grade crossing, refer to EPG 616.8.46 (TA-46) Work in the Vicinity of a Grade Crossing.  
SEE EPG 616.12 WORK ZONE SPEED LIMITS FOR SPEED LIMIT GUIDELINES.

**Developer / Owner:**  
JAFRI LLC, ASHLEY FANGMAN  
4010 CORKWOOD CT.  
COLUMBIA, MO 65203  
417-766-8874 - ashleyfangman@gmail.com

**P+Z No.** # 23-004744  
**Approval Date:** July 6, 2023  
**City No.** #  
**Page No.**  
**CONSTRUCTION DETAILS**