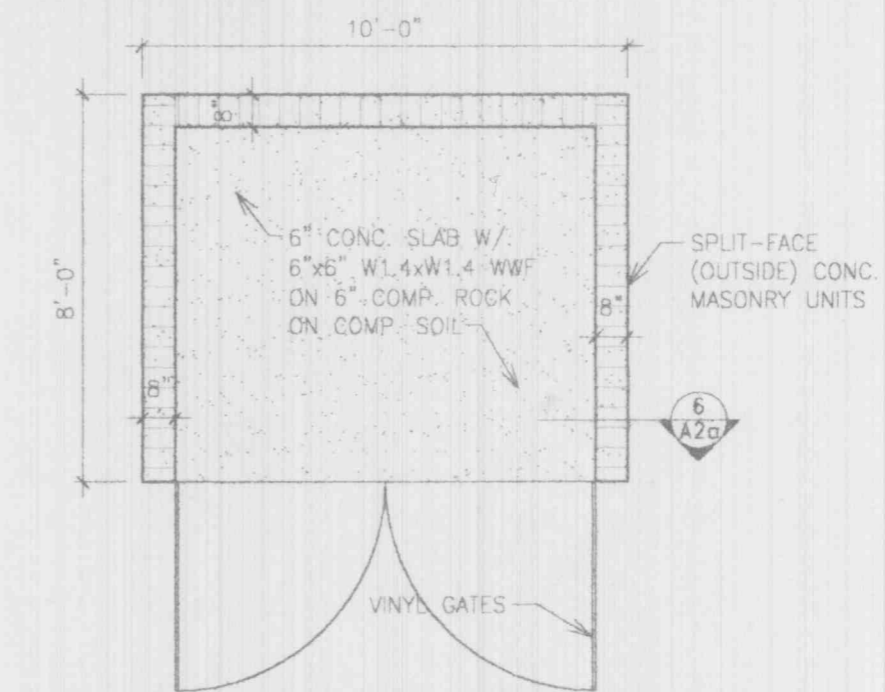


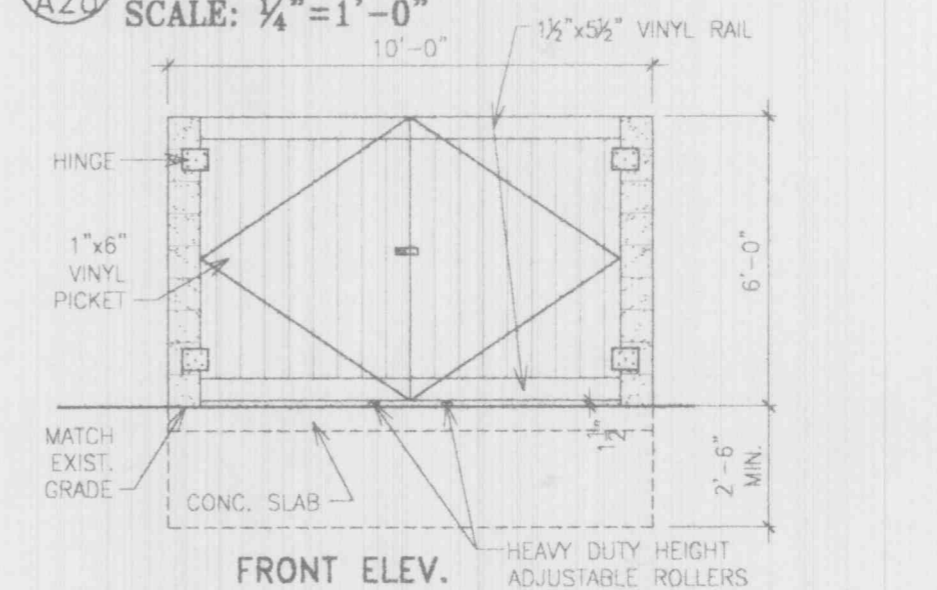
**SILTATION CONTROL PLAN**

SCALE: 1"=20'-0"

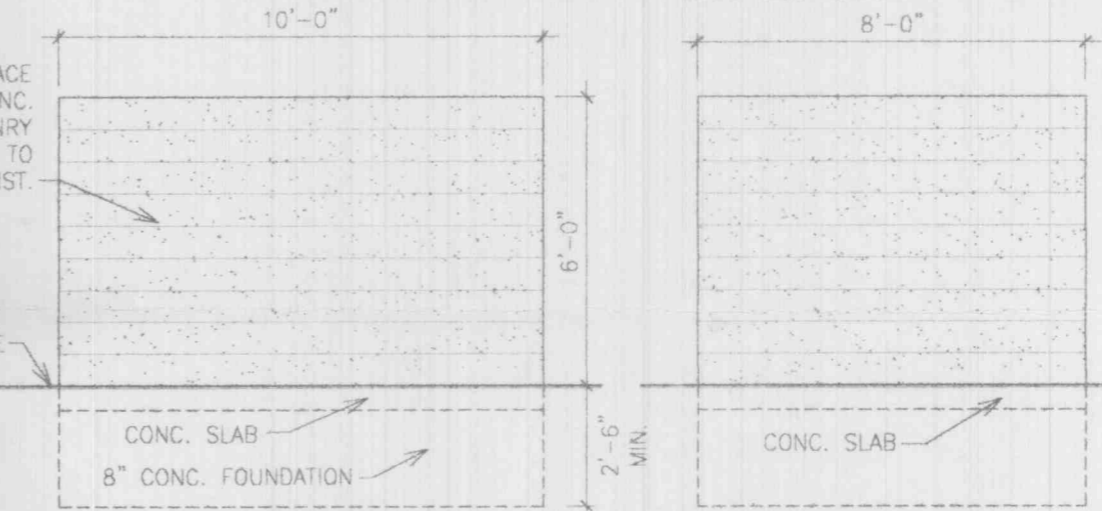


**4 TRASH ENCLOSURE PLAN**

SCALE: 1/4"=1'-0"



**FRONT ELEV.**

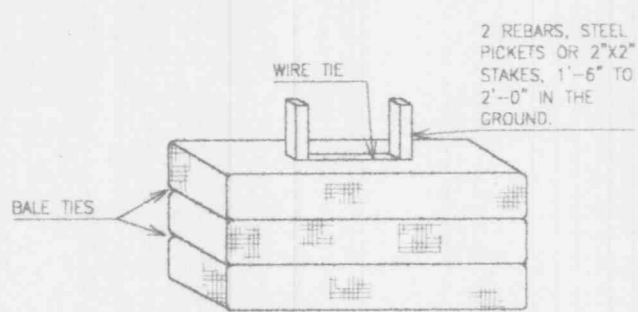


**REAR ELEV.**

**SIDE ELEV.**

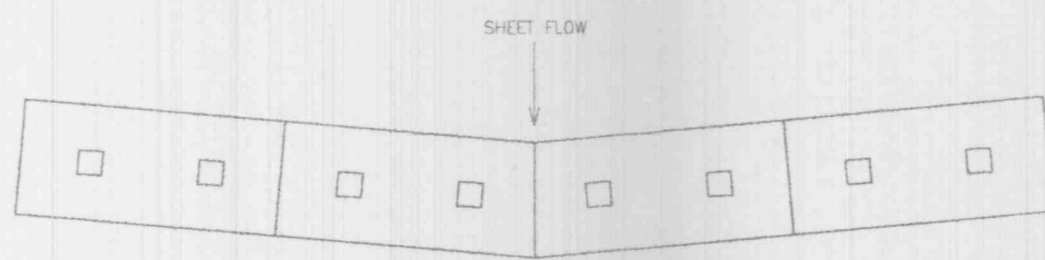
**5 TRASH ENCLOSURE ELEVATIONS**

SCALE: 1/4"=1'-0"



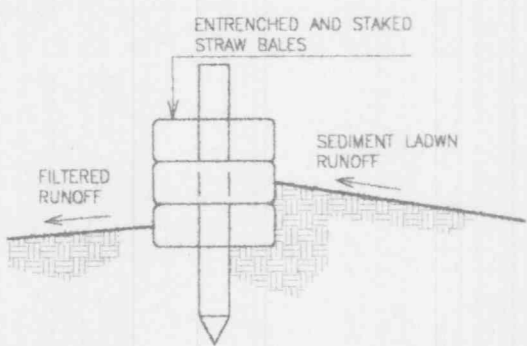
**1 TYPICAL STRAW BALE**

SCALE: 3/8"=1'-0"



**3 STRAW BALE BARRIER**

SCALE: 3/8"=1'-0"

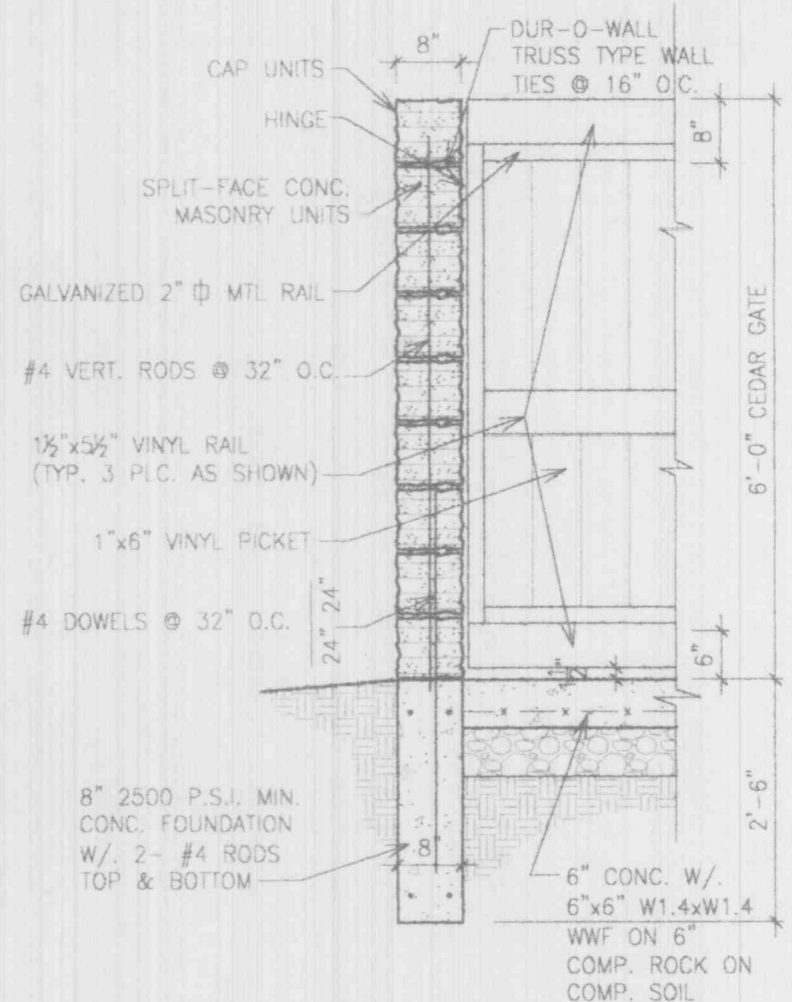


**2 STRAW BALE SECTION**

SCALE: 3/8"=1'-0"

**NOTES:**

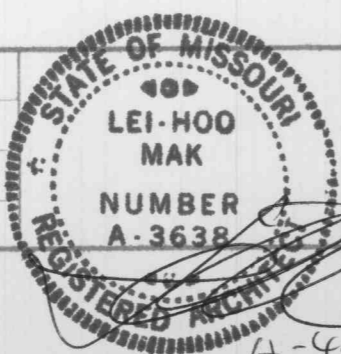
- BALES SHALL BE PLACED AT THE TOE OF A SLOPE OR ON THE CONTOUR AND IN A ROW WITH ENDS TIGHTLY ABUTTING THE ADJACENT BALES.
- EACH BALE SHALL BE EMBEDDED IN THE SOIL A MINIMUM OF FOUR (4) INCHES, AND PLACED SO THE BINDINGS ARE HORIZONTAL.
- BALES SHALL BE SECURELY ANCHORED IN PLACE BY EITHER TWO STAKES OF RE-BARS DRIVEN THROUGH THE BALE. THE FIRST STAKE IN EACH BALE SHALL BE DRIVEN TOWARD THE PREVIOUSLY LAID BALE AT AN ANGLE TO FORCE THE BALES TOGETHER. STAKES SHALL BE DRIVEN FLUSH WITH THE BALE.
- INSPECTION SHALL BE FREQUENT AND REPAIR AND/OR REPLACEMENT SHALL BE MADE PROMPTLY AS NEEDED.
- BALES SHALL BE REMOVED WHEN THEY HAVE SERVED THEIR USEFULNESS SO AS NOT TO BLOCK OR IMPEDE STORM FLOW OR DRAINAGE.



**6 TRASH ENCLOSURE SECTION**

SCALE: 1/2"=1'-0"

11/29/00  
2600-Site  
PROJECT NO.: 2600  
DRAWING NO.: A2a  
DATE: 10/24/00, 12/4/00  
DRAWN BY: Y.C.



**CHINATOWN EXPRESS RESTAURANT**  
419 VETERANS MEMORIAL PARKWAY  
SPRINGFIELD, MISSOURI



**MAK ARCHITECTS, INC.**  
ARCHITECTURE • PLANNING • INTERIOR DESIGN  
8328-R Olive Blvd., St. Louis, Missouri 63132  
(314) 997-3802  
(314) 993-3761 (Fax) www.makarchitects.com

A-4-00