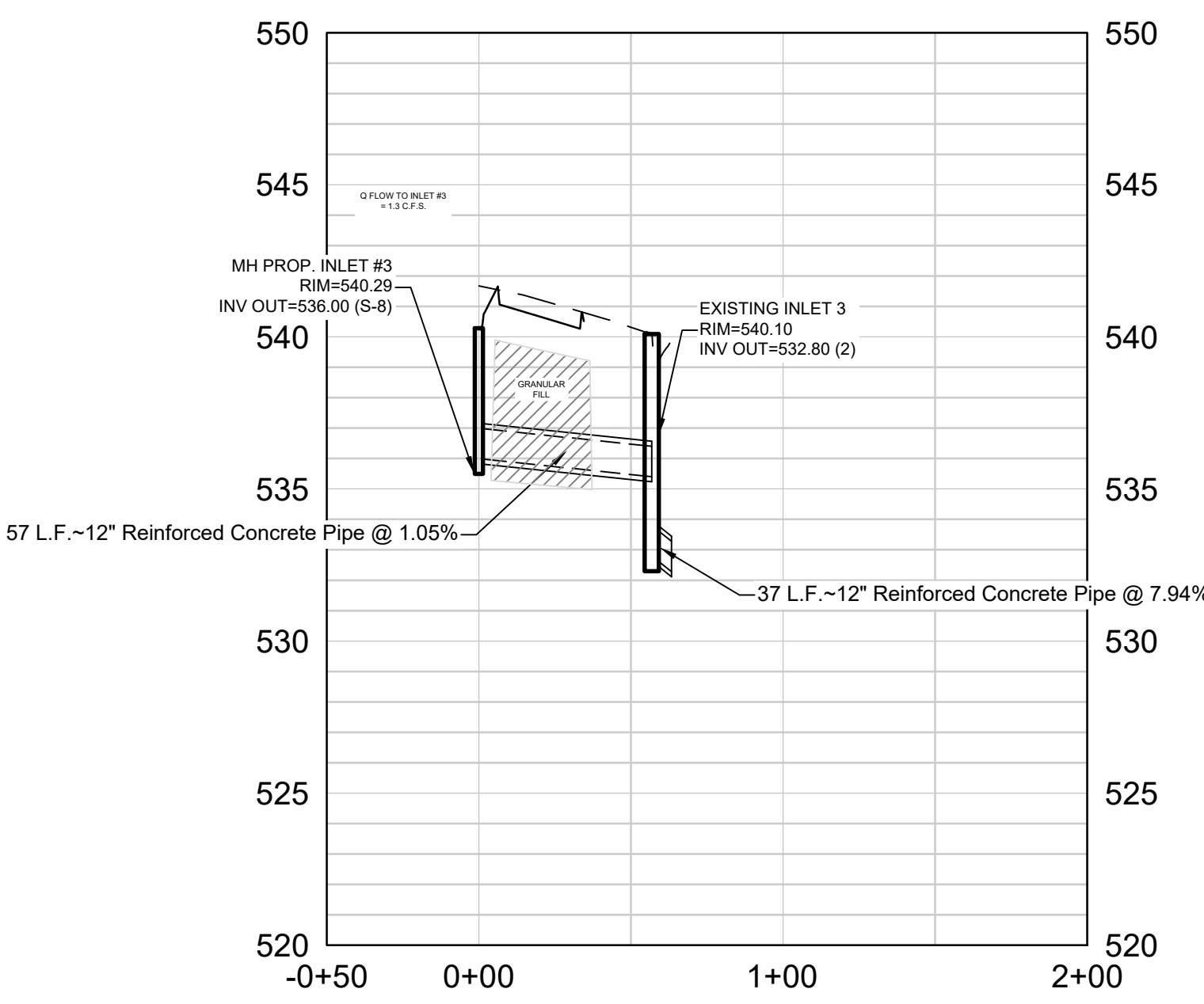


Storm Sewer Line 1 (Private)

STRUCTURE TABLE			
Structure	Rim/Top	Invert(s)	Location
PROP. INLET #2	540.05	INV IN=536.10 (P-1) INV OUT=536.00 (P-2)	N=1051840.6123 E=763564.1400
PROP. INLET #1	540.07	INV OUT=538.00 (P-1)	N=1051988.8592 E=763451.1377
9	535.98	INV OUT=527.20 (10)	N=1051832.5370 E=763618.2200

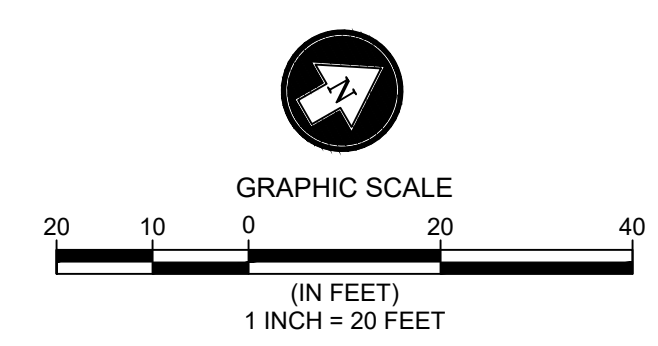
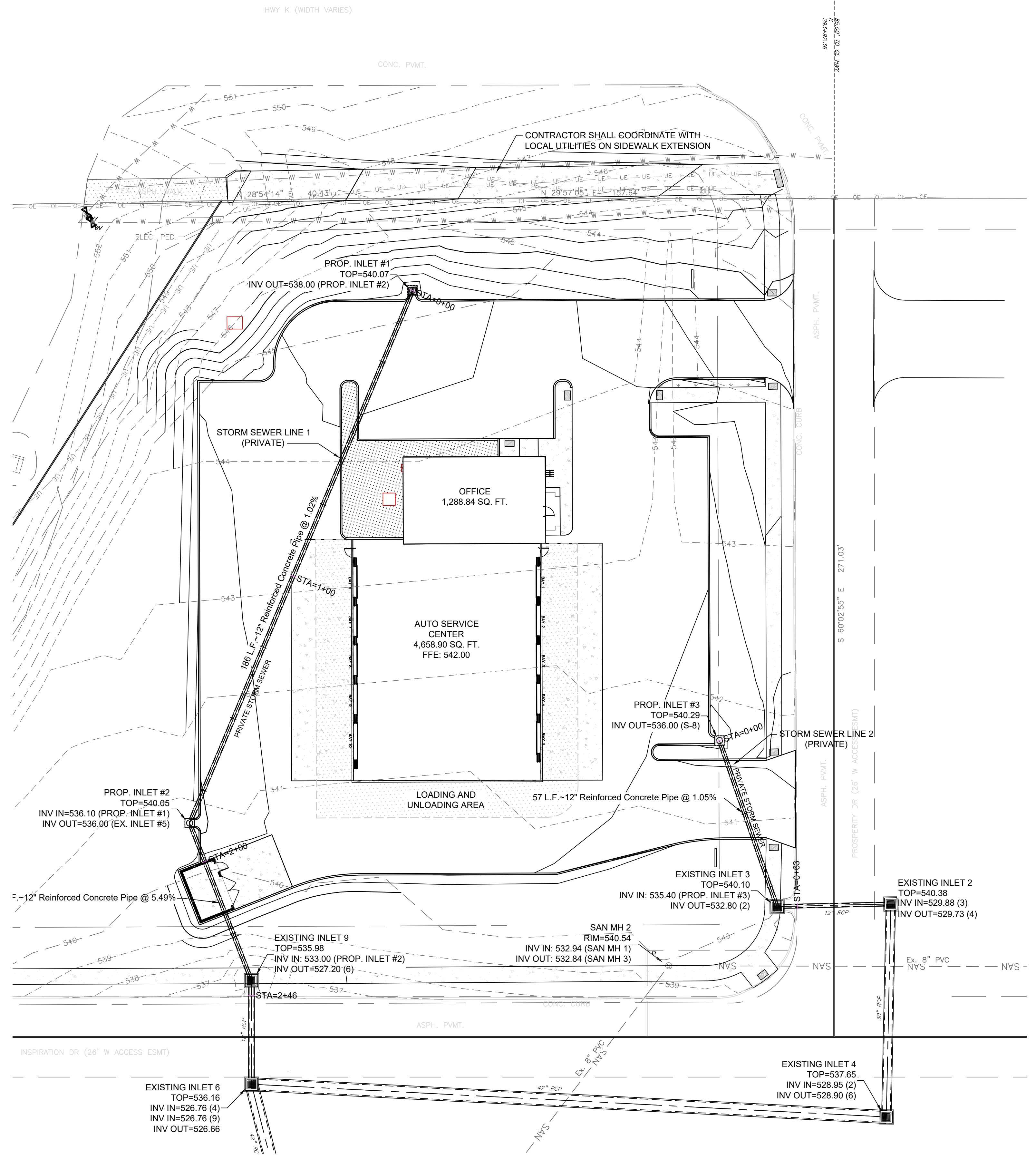
PIPE TABLE				
Pipe	Length	Size	Material	Slope
P-2	54.68'	12"	Reinforced Concrete Pipe	5.49%
P-1	186.40'	12"	Reinforced Concrete Pipe	1.02%
10	33.50'	18"	Reinforced Concrete Pipe	1.31%



Storm Sewer Line 2 (Private)

STRUCTURE TABLE			
Structure	Rim/Top	Invert(s)	Location
PROP. INLET #3	540.29	INV OUT=536.00 (P-3)	N=1052002.3144 E=763626.5226
3	540.10	INV OUT=532.80 (3)	N=1051991.6740 E=763682.3080

PIPE TABLE				
Pipe	Length	Size	Material	Slope
P-3	56.95'	12"	Reinforced Concrete Pipe	1.05%
3	36.76'	12"	Reinforced Concrete Pipe	7.94%



P.O. BOX 481 LEXINGTON, KY 40588  
 (859) 785-0383  
 CIVIL DESIGN, LAND SURVEYING,  
 GEOTECHNICAL ENGINEERING, DRILLING SERVICES,  
 IBC SPECIAL INSPECTIONS, MATERIAL TESTING,  
 CM-CEI CONSTRUCTION SERVICES



**STORM SEWER PLAN**  
**CHRISTIAN BROTHERS AUTOMOTIVE**  
 OF FALLON, ST. CHARLES COUNTY, MISSOURI 63368

PROJECT NO:	220120	DRAWN BY:	PDC
DATE:	10-24-2022	REVIEWED BY:	DJR
ISSUED FOR PERMITTING			
REVISION	DATE		
REV 1	11-18-2022		
REV 2	1-8-2023		
REV 3	1-13-2023		
REV 4	02-09-23		

