

UTILITY NOTES:

1. IN THE EVENT THAT ANY DISCREPANCIES OR ERRORS ARE FOUND ON THESE PLANS, OR ANY CONFLICTS OR PROBLEMS ARE ENCOUNTERED DURING CONSTRUCTION, THE CONTRACTOR SHALL NOTIFY THE ENGINEER BEFORE PROCEEDING WITH THE WORK. THE ENGINEER RESERVES THE RIGHT TO MAKE MINOR ADJUSTMENTS, AS NECESSARY, TO ACCOMPLISH THE INTENT OF THE PLANS.
2. SEWER MANHOLES SHALL NOT BE COVERED BY ANY CONSTRUCTION OPERATION.
3. THE CONTRACTOR SHALL KEEP ALL PIPES FREE AND CLEAR OF DEBRIS.
4. UNDERGROUND UTILITIES WHETHER SHOWN OR NOT, MAY EXIST ON THIS PROPERTY. THE CONTRACTOR IS TO NOTIFY ALL UTILITY COMPANIES PRIOR TO ANY EXCAVATION OR CONSTRUCTION ACTIVITY IN ORDER THAT THEY CAN LOCATE AND MARK ANY OF THEIR UNDERGROUND UTILITIES.
5. ALL SANITARY SEWER LATERALS MUST HAVE CLEANOUTS WITH 24"x24" THICK CONCRETE PAD INSTALLED AROUND THE CAP WHERE SEWER LINE CROSSES THE STREET.
6. SANITARY SEWER CROSSING WATER MAINS SHALL HAVE A VERTICAL DISTANCE OF 18" BETWEEN THE OUTSIDE OF WATER MAIN AND THE OUTSIDE OF SEWER PIPES. SEWER JOINTS MUST BE EQUIDISTANCE, AS FAR AS POSSIBLE, FROM THE WATER MAIN JOINTS. THIS SHALL BE THE CASE WHERE THE WATER MAIN IS EITHER ABOVE OR BELOW THE STRUCTURE.
7. ALL SANITARY MANHOLES SHALL BE BARREL SECTIONS TO TOP SLAB.
8. ALL UTILITIES SHOWN ON THESE PLANS ARE APPROXIMATE. INDIVIDUAL SERVICE LINES ARE NOT SHOWN. THE CONTRACTOR OR SUBCONTRACTOR SHALL NOTIFY THE UTILITY PROTECTION CENTER 811, 48 HOURS IN ADVANCE OF ANY CONSTRUCTION ON THIS PROJECT. THIS NUMBER WAS ESTABLISHED TO PROVIDE ACCURATE LOCATIONS OF EXISTING BELOW GROUND UTILITIES (I.E. CABLES, ELECTRIC WIRES, GAS, AND WATERLINES), WHEN CONTACTING THE 811 CALL CENTER, PLEASE STATE THAT THE WORK TO BE DONE IS FOR A PROPOSED SEWER OR DRAINAGE FACILITY. THE CONTRACTOR SHALL BE RESPONSIBLE FOR BECOMING FAMILIAR WITH ALL UTILITY REQUIREMENTS SET FORTH ON THE PLANS AND IN THE TECHNICAL SPECIFICATIONS AND SPECIAL PROVISIONS.
9. CONTRACTOR SHALL VERIFY ALL UTILITY STUB OUT LOCATIONS WITH ARCHITECTURAL AND MEP DRAWINGS.
10. THE WATER DISTRICT REQUIRES ONE (1) WEEK NOTICE BEFORE THE START OF CONSTRUCTION.
11. IT IS THE CONTRACTOR'S RESPONSIBILITY TO OBTAIN ANY CITY OR MODOT PERMITS REQUIRED TO WORK ALONG THE ROADWAYS.

NOTES

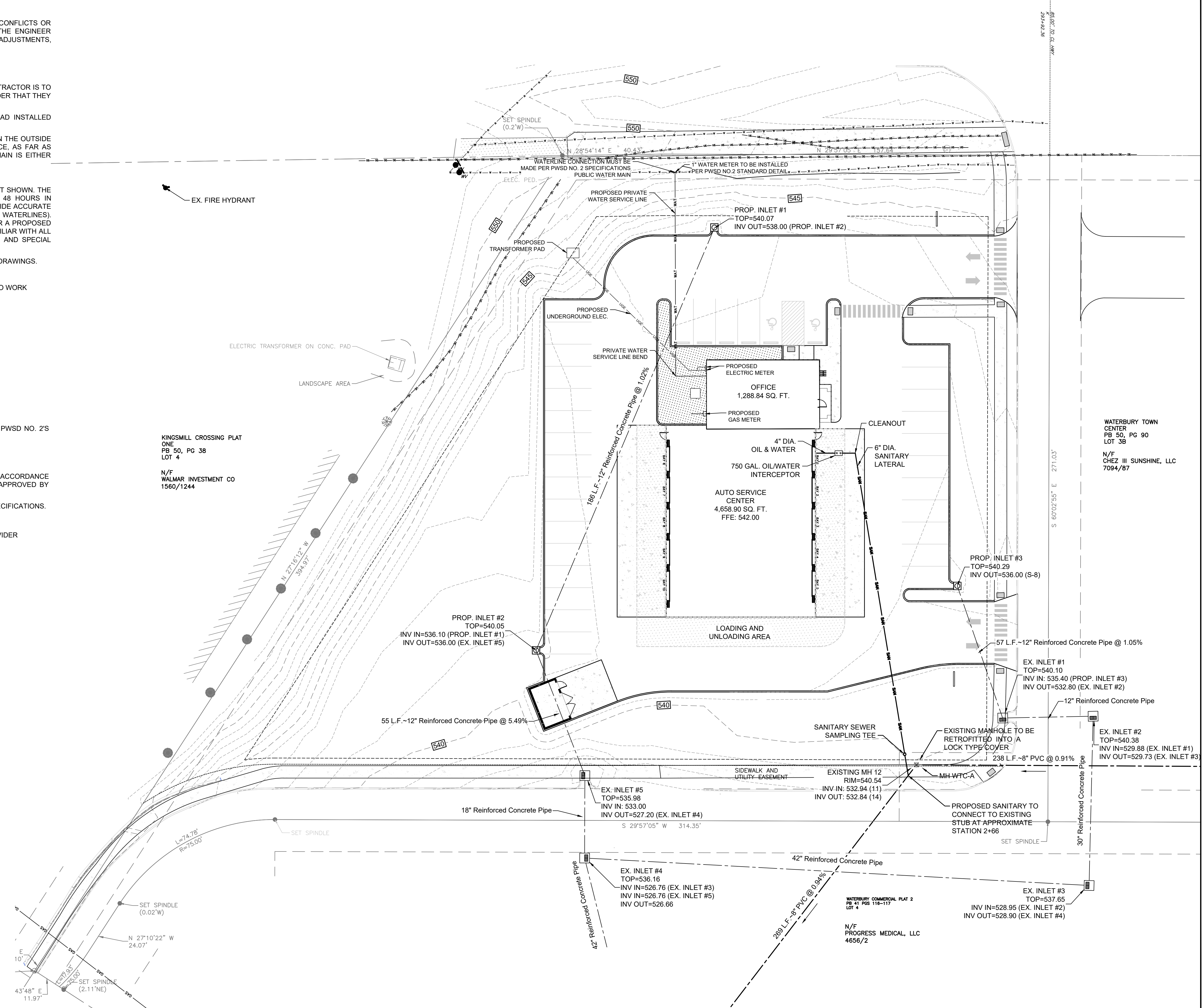
1. ALL WATER LINES SHALL BE C900 SDR 18.
2. ANY NEW FIRE HYDRANTS SHALL BE PAINTED RED PER PWSO NO.2 'S SPECIFICATIONS.
3. FOR ALL WATERLINES < 8-INCHES A GATE VALVE SHALL BE REQUIRED.
4. BUTTERFLY VALVES SHALL BE USED FOR ALL WATER LINES > 8-INCHES

WATERLINE NOTES:

1. ALL WATER SERVICE LINES, FIRE LINES, AND PRIVATE WATER MAINS MUST BE INSTALLED PER PWSO NO. 2'S SPECIFICATIONS.
2. ALL PRIVATE FIRE HYDRANTS ARE TO BE PAINTED RED PER PWSO NO. 2 SPECIFICATIONS
3. ALL LATERAL CONNECTIONS MUST BE MADE PER PWSO NO. 2'S SPECIFICATIONS.
4. ALL WATER MAINS, VALVES, FITTINGS, HYDRANTS, AND RELATED ITEMS ARE TO BE INSTALLED IN ACCORDANCE WITH THE CURRENT PWSO#2 OF ST. CHARLES COUNTY GUIDELINES AND SPECIFICATIONS AS APPROVED BY MODNR REVIEW NO. 6050805-13.
5. ALL CONNECTIONS TO AN EXISTING WATER MAIN SHALL BE MADE PER THE WATER DISTRICT'S SPECIFICATIONS.

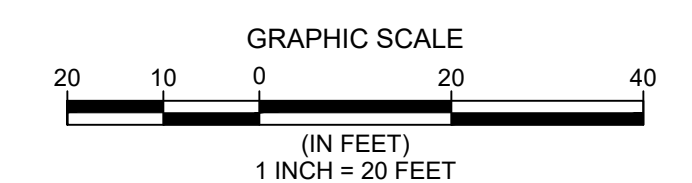
GAS:

1. INSTALL NEW GAS LINE AND CONNECT TO EXISTING GAS LINE STUB OUT PER LOCAL UTILITY PROVIDER SPECIFICATIONS AND REQUIREMENTS
2. COORDINATE WITH PLUMBING PLANS FOR CONNECTION TO GAS METER.



DUCKETT CREEK SANITARY DISTRICT (DCSD) NOTES:

1. EXISTING SANITARY SEWER SERVICE SHALL NOT BE INTERRUPTED
 2. CONSTRUCTION OF WASTEWATER FACILITIES REQUIRES DCSD INSPECTION.
- CONTACT DCSD ENGINEERING DEPARTMENT AT 636 441-1244 TO SCHEDULE INSPECTION.
48 HOURS ADVANCE NOTICE IS REQUIRED.



P.O. BOX 481 LEXINGTON, KY 40588
(859) 785-0383
CIVIL DESIGN, LAND SURVEYING,
GEO TECHNICAL ENGINEERING, DRILLING SERVICES,
IBC SPECIAL INSPECTIONS, MATERIAL TESTING,
CM-CEI CONSTRUCTION SERVICES



UTILITY PLAN
CHRISTIAN BROTHERS AUTOMOTIVE
OF FALLON, ST. CHARLES COUNTY, MISSOURI 63368

PROJECT NO:	220120	DRAWN BY:	PDC
DATE:	10-24-2022	REVIEWED BY:	DJR
ISSUED FOR PERMITTING			
REVISION:	DATE:		
REV 1	11-18-2022		
REV 2	1-8-2023		
REV 3	1-13-2023		
REV 4	02-09-23		



02-09-23
C-5.0