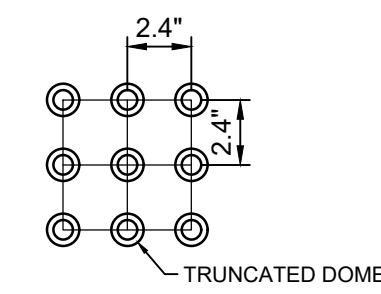
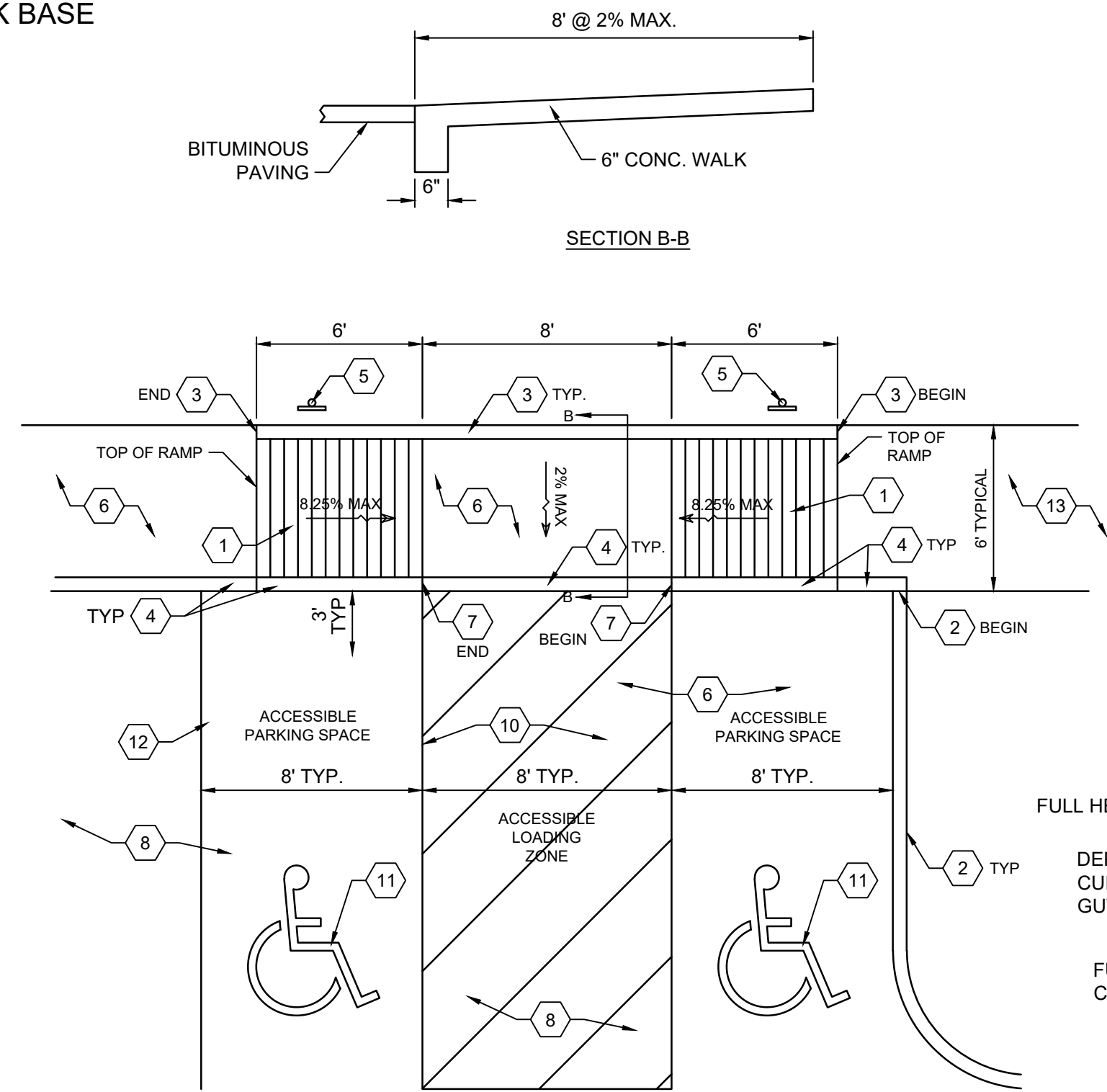


- NOTES:**
- PAVEMENT SECTIONS PER GEOTECHNICAL RECOMMENDATIONS.
 - THE ASPHALT SURFACE SHALL BE COMPACTED TO 98% MAXIMUM DENSITY.

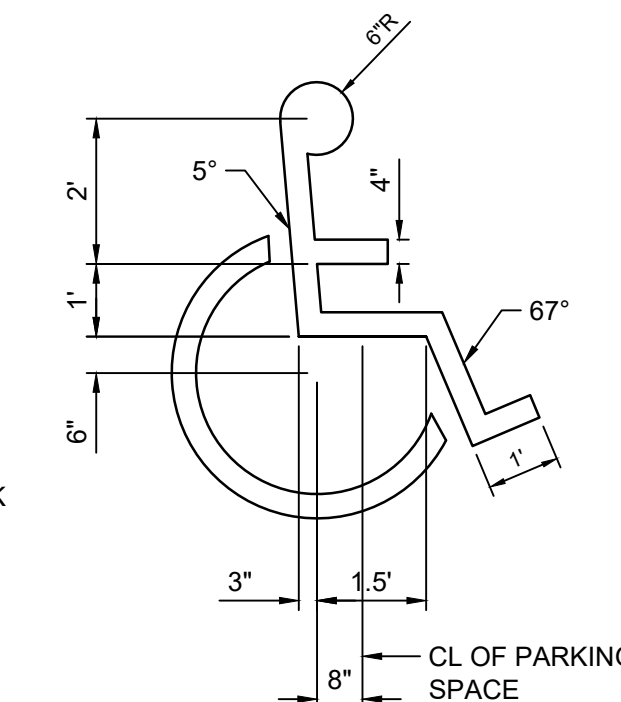
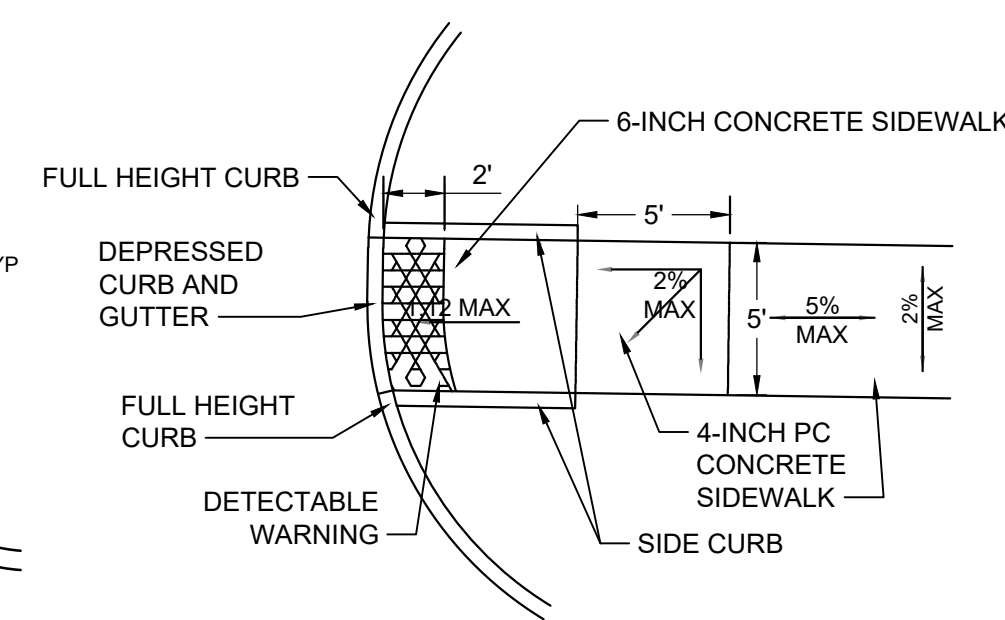
ALL ASPHALT WITHIN THE DRIVE AISLE IS TO BE 4" ASPHALT OVER 8" ROCK BASE

KEYED NOTES:

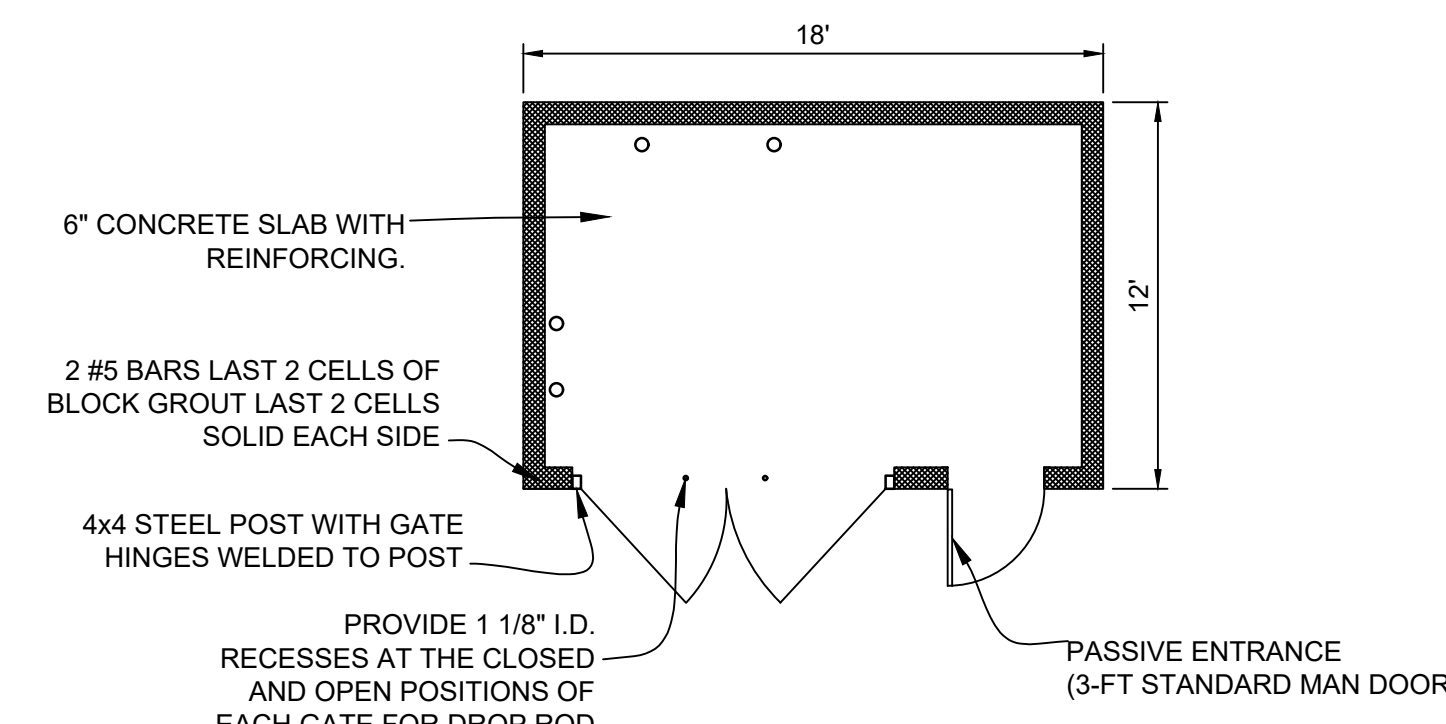
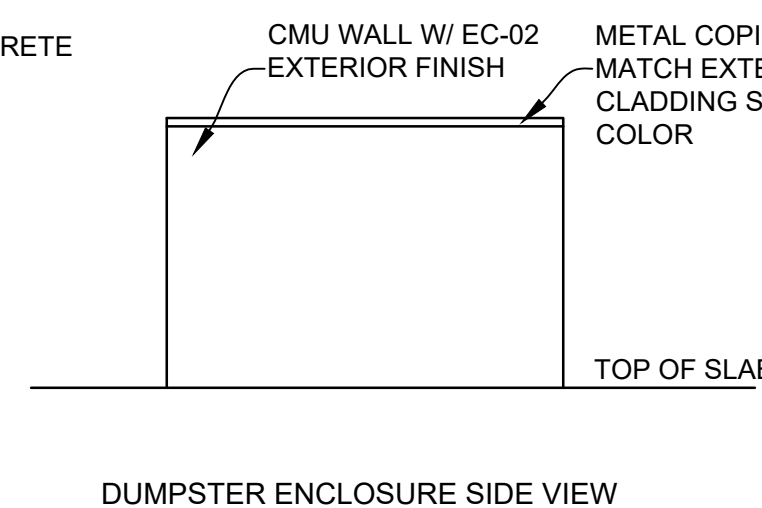
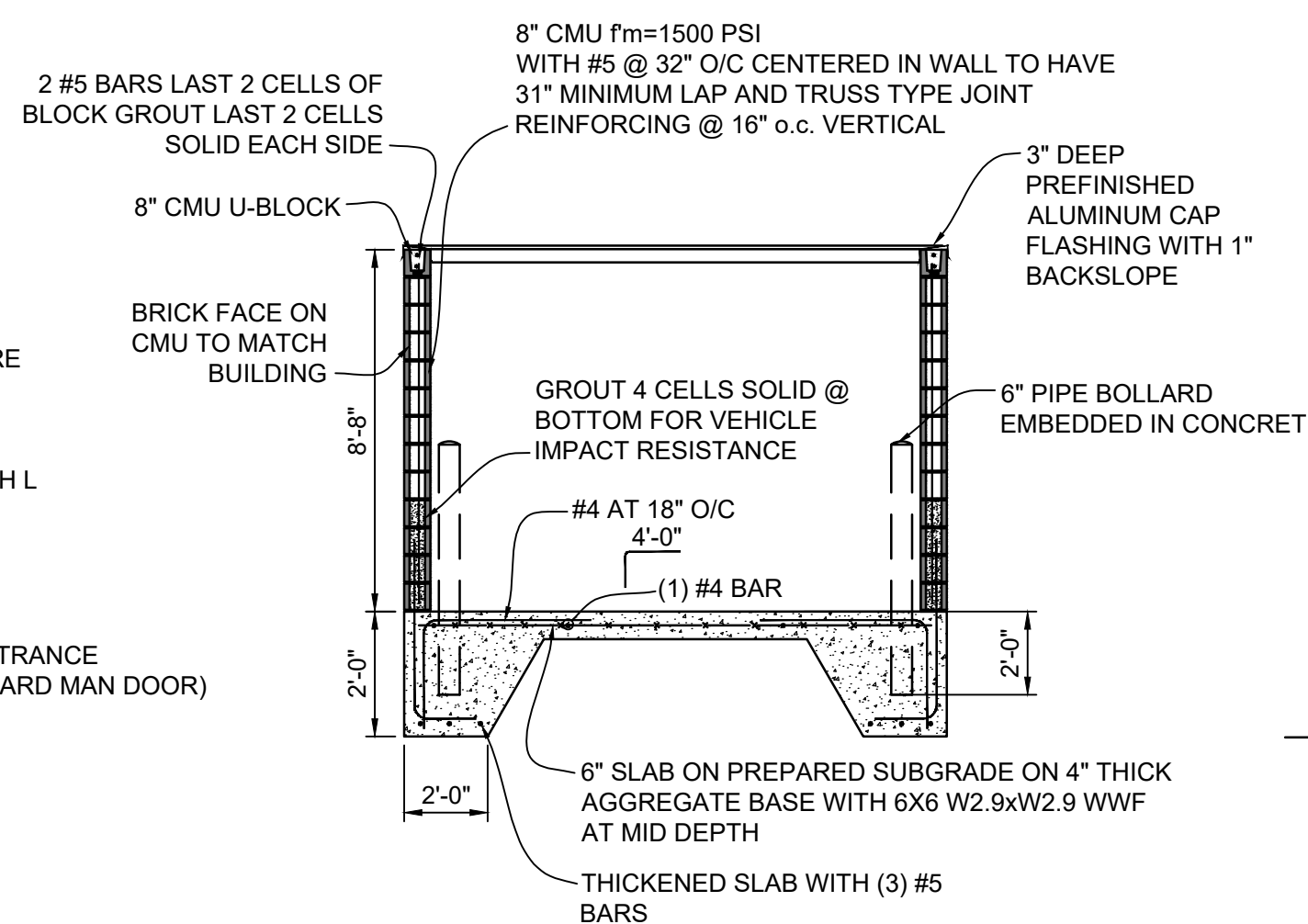
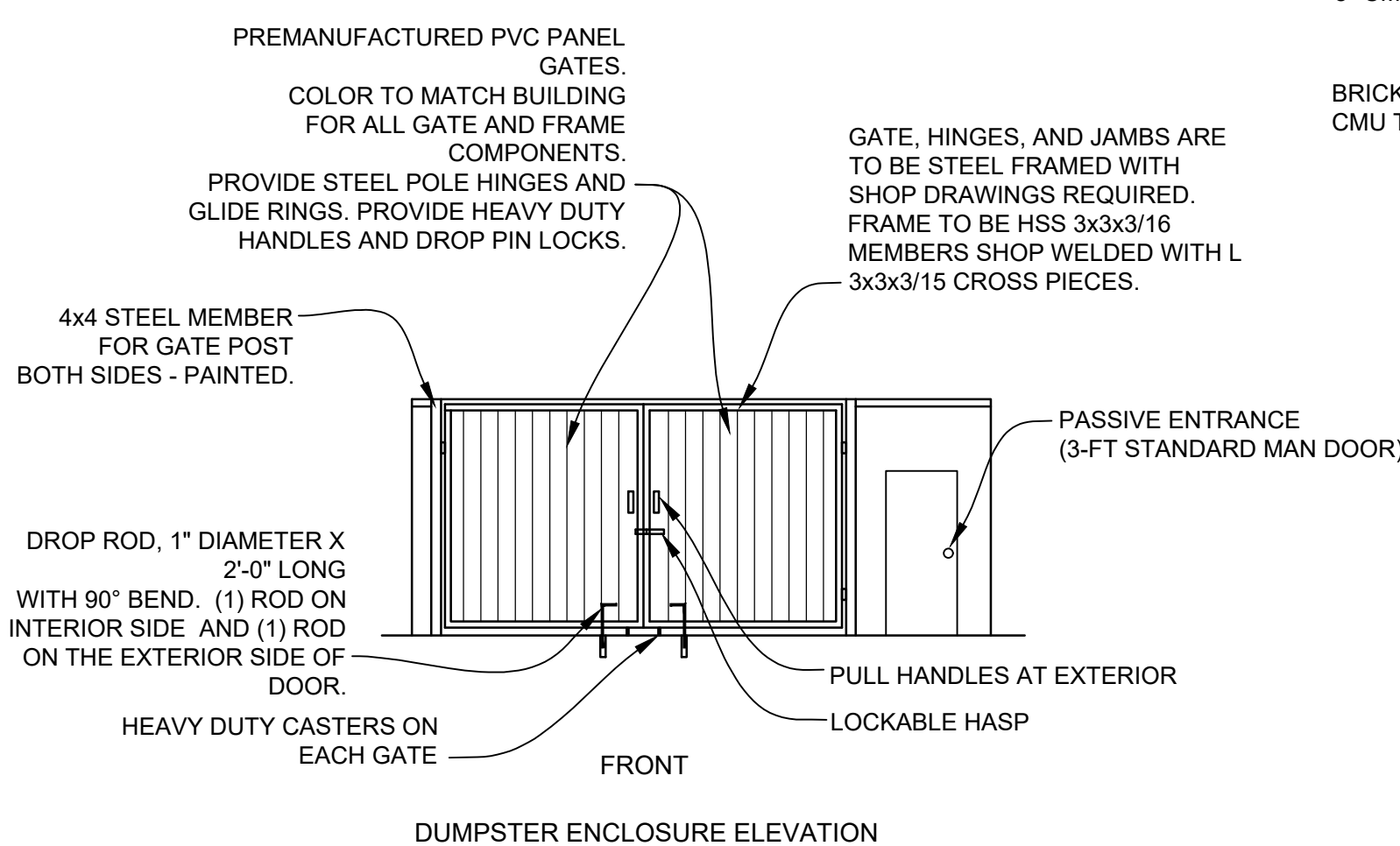
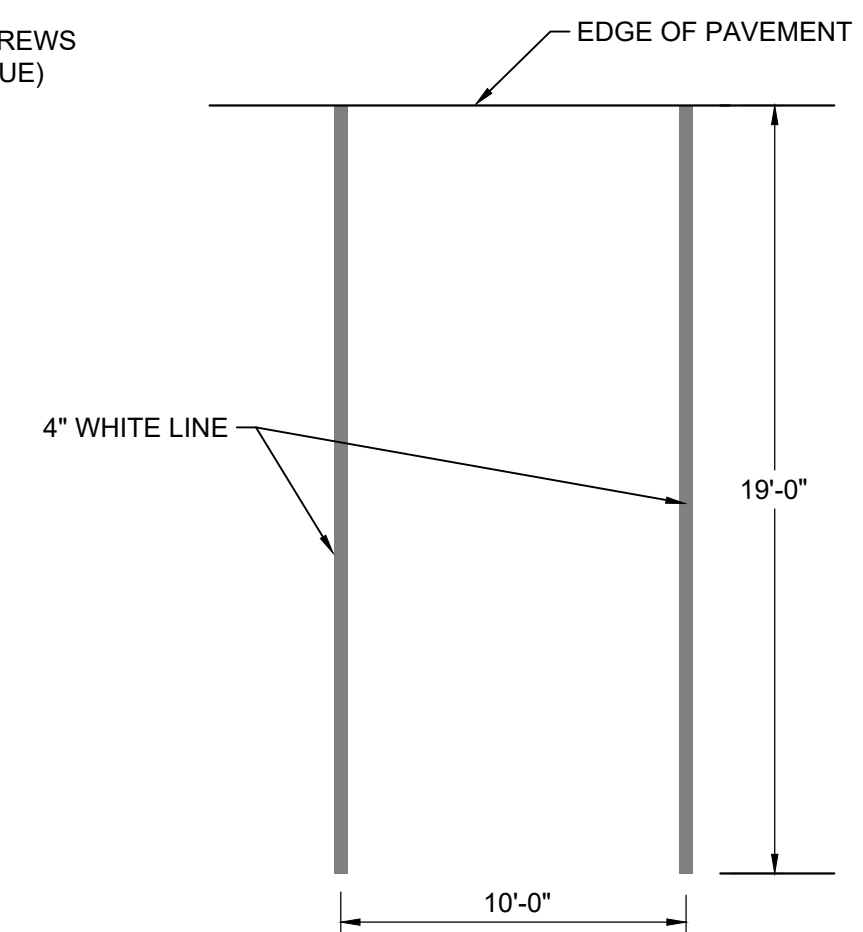
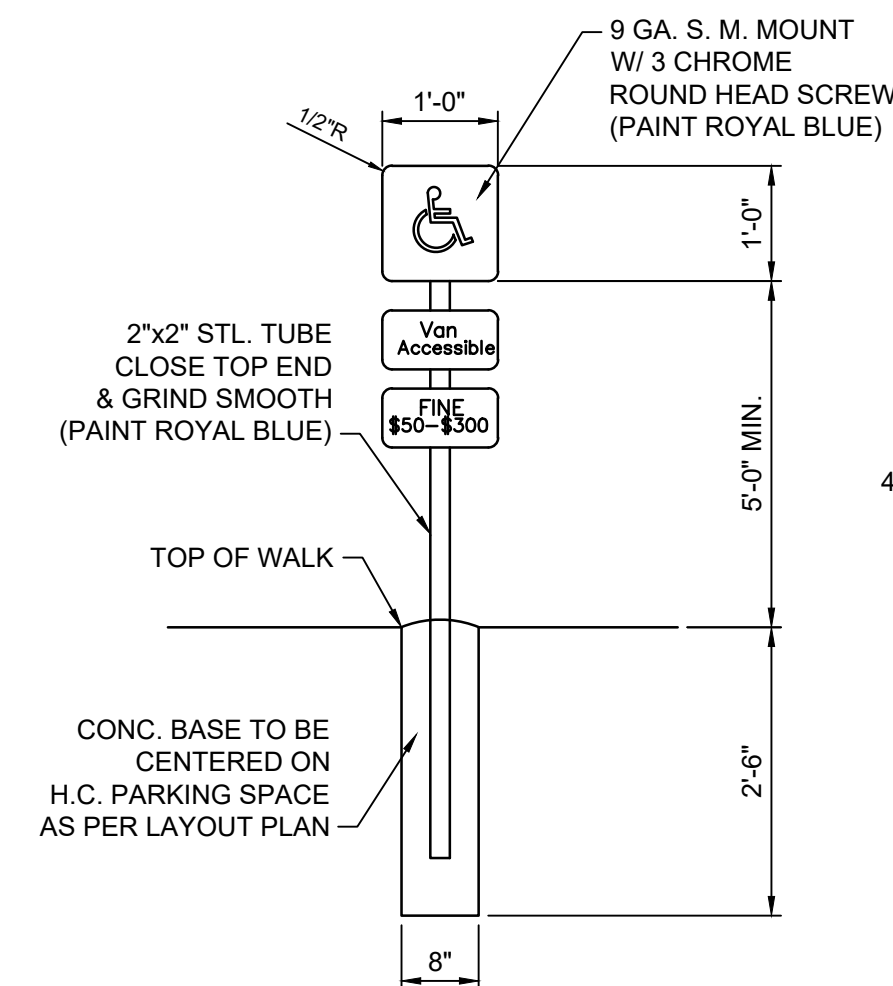
- THE SURFACE OF RAMP SHALL HAVE A TRANSVERSE HEAVY BROOM SURFACE TEXTURE ROUGHER THAN THE SURROUNDING SIDEWALK WITH CONTROL JOINTS SPACED 6' O.C. PERPENDICULAR TO THE DIRECTION OF TRAVEL.
- CONCRETE HEADER CURB PER DETAIL "M" THIS SHEET.
- CONCRETE HEADER CURB PER DETAIL "M", THIS SHEET, TO BE FLUSH WITH TOP OF ADJACENT SIDEWALKS CREATING A CURB AT THE SIDEWALK LANDING.
- TOP OF INTEGRAL CONCRETE CURB TO BE FLUSH WITH WALK, ACCESSIBLE RAMP AND ACCESSIBLE LANDING.
- ACCESSIBLE PARKING SIGN CENTERED ON EACH ACCESSIBLE SPACE PER DETAIL "J", THIS SHEET. TOP OF SIGN TO BE 6'-0" FROM FINISHED GRADE.
- CONCRETE WALK WITH INTEGRAL CURB PER DETAIL "D", THIS SHEET.
- CONCRETE CURB FLUSH WITH BITUMINOUS PAVEMENT AND CONCRETE WALK.
- BITUMINOUS PAVEMENT PER DETAIL "A", THIS SHEET.
- NOT USED.
- ACCESSIBLE LOADING ZONE PAINTED WITH 6" WIDE BLUE PAINTED BORDER AND 6" WIDE BLUE STRIPES AT 45° ANGLE AND 3' O.C. TYPICAL OF ALL ACCESSIBLE LOADING SPACES.
- ACCESSIBLE SYMBOL PER DETAIL "I", THIS SHEET. TYPICAL. PROVIDE SYMBOL AT EVERY ACCESSIBLE SPACE.
- 4" WIDE BLUE PARKING STRIPE. PROVIDE BLUE STRIPE WHEN ADJACENT TO ACCESSIBLE PARKING SPACE.
- CONCRETE WALK SIMILAR TO DETAIL "B", THIS SHEET.



NOTE:
THE DETECTABLE WARNING SHALL EXTEND THE FULL WIDTH OF THE CURB RAMP, TO A DEPTH OF 24", SHALL BE A CONTRASTING COLOR, AND MEET THE CONFIGURATION AND DIMENSION SHOWN.



NOTE:
THIS SYMBOL TO BE PAINTED IN ALL HANDICAPPED SPACES.



K DUMPSTER DETAIL
NOT TO SCALE

L STANDARD INVERTED "U" BIKE RACK SURFACE MOUNT
NOT TO SCALE

- | | |
|-------|------------|
| REV 1 | 11-18-2022 |
| REV 2 | 1-6-2023 |
| REV 3 | 1-6-2023 |
| REV 5 | 02-10-23 |

P.O. BOX 481 LEXINGTON, KY 40588
(859) 785-0383

CIVIL DESIGN, LAND SURVEYING,
GEOTECHNICAL ENGINEERING, DRILLING SERVICES,
IBC SPECIAL INSPECTIONS, MATERIAL TESTING,
CM-CEI CONSTRUCTION SERVICES



CIVIL DETAILS
CHRISTIAN BROTHERS AUTOMOTIVE
OF FALLON, ST. CHARLES COUNTY, MISSOURI 63368

PROJECT NO:	220120	DRAWN BY:	PDC
DATE:	10-24-2022	REVIEWED BY:	DJR
ISSUED FOR PERMITTING			
REVISION:	DATE:		
REV 1	11-18-2022		
REV 2	1-6-2023		
REV 3	1-13-2023		



C-6.4