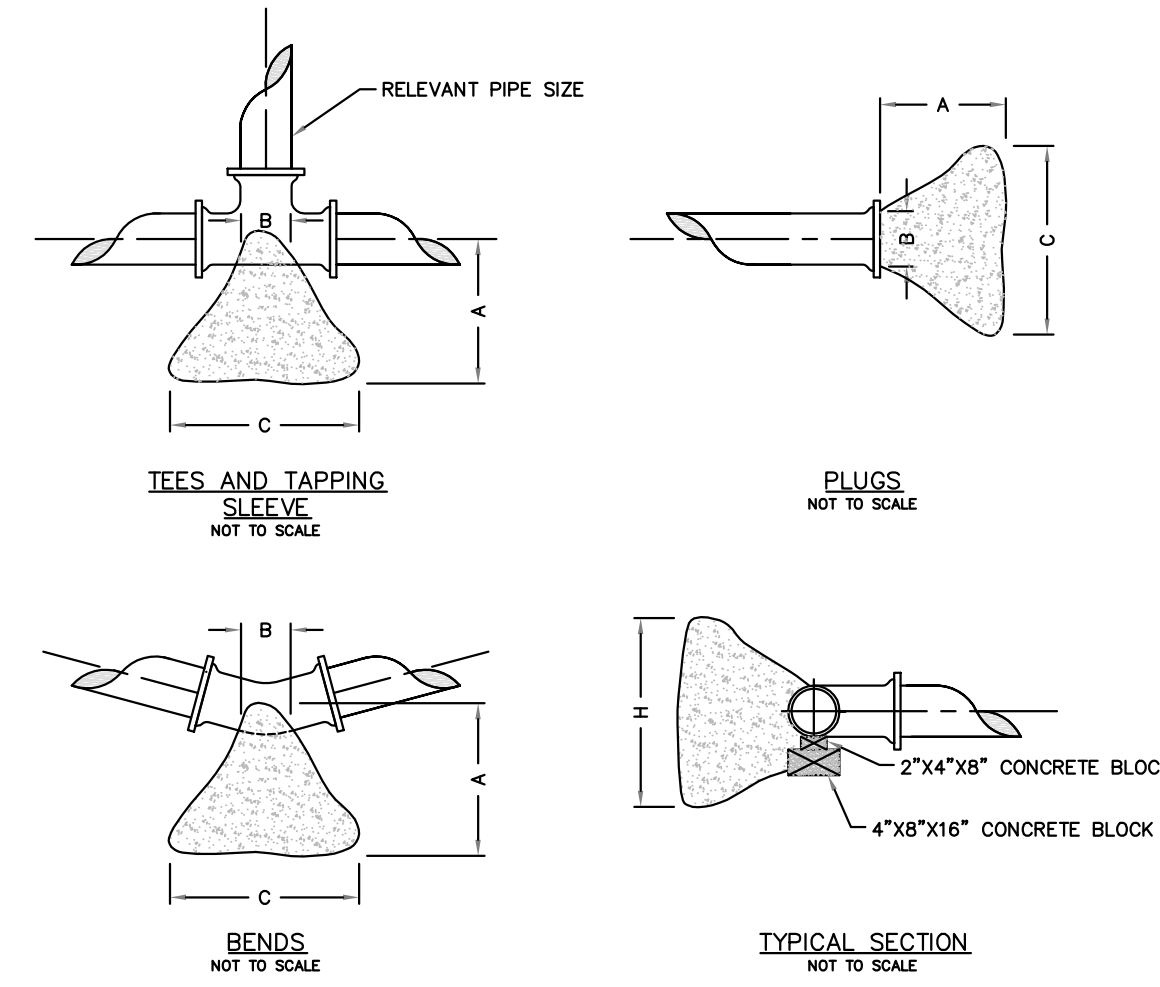


NOTE: THIS DETAIL IS FROM PWSD#2



**THRUST BLOCK DIMENSIONS - INCHES**

PIPE DIA.	ALL FTGS.		TEE PLUG TAPPING		90 DEGREE BEND		45 DEGREE BEND		22-1/2 BEND		11-1/4 BEND	
	A	B	C	H	C	H	C	H	C	H	C	H
4	14	4	24	12	26	15	18	12	12	12	12	12
6	16	6	36	18	36	24	30	18	24	12	12	12
8	20	8	36	30	42	36	36	24	24	18	18	12
10	20	10	48	36	66	36	36	36	28	24	18	18
12	24	12	68	36	82	42	52	36	40	24	28	18

**NOTE**  
FOR FITTINGS LARGER THAN 12", SPECIAL RESTRAINT DESIGNS ARE REQUIRED.

**HORIZONTAL THRUST BLOCKING**  
DETAIL "C"

NOTE: THIS DETAIL IS FROM PWSD#2

Buffalo box is an acceptable product to use.  
Tyler 562-S and 564-S are acceptable products.

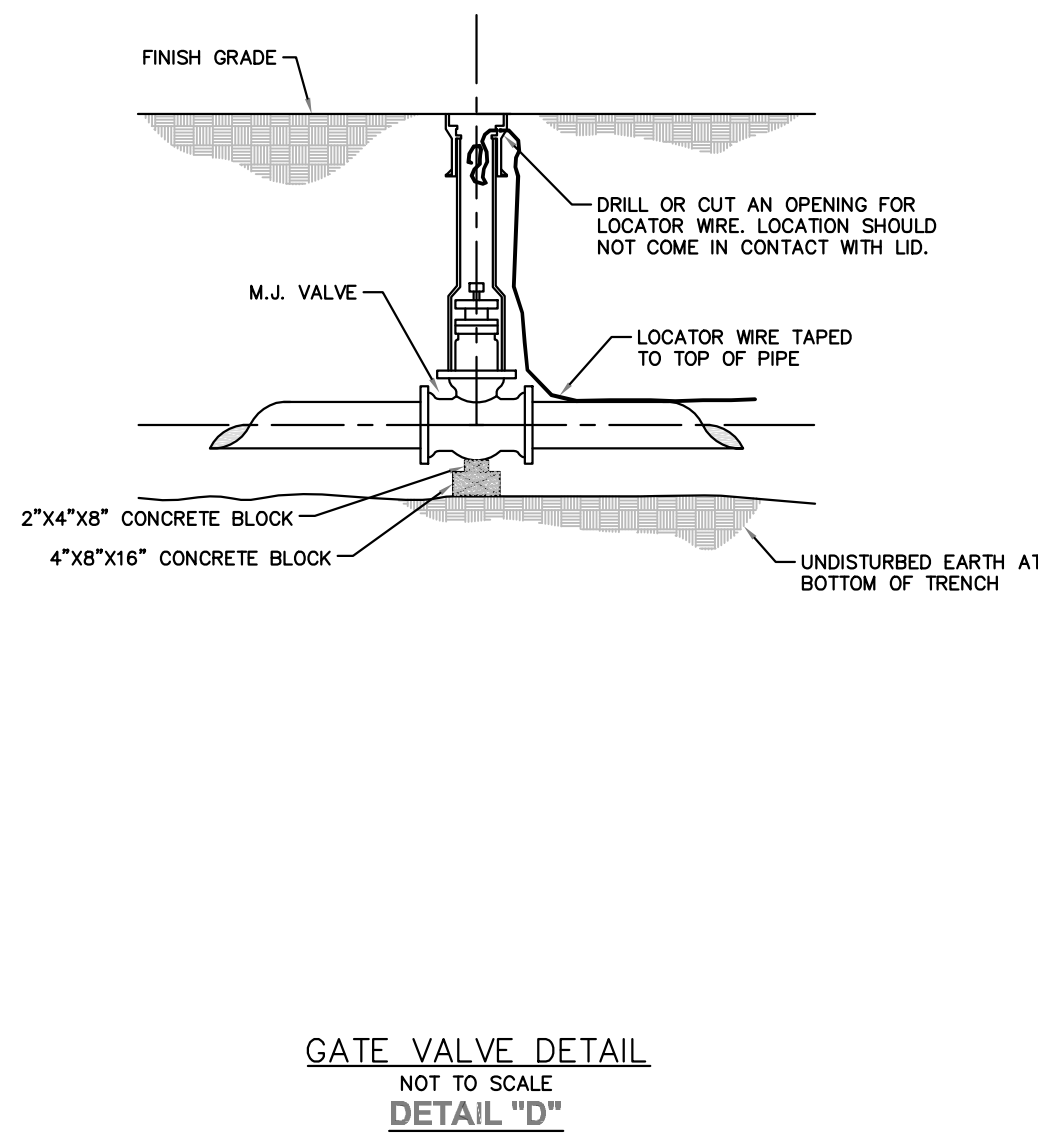


Table 60-7 Temporary Fall Seeding

Plant Species	Rate <sup>1</sup> (lb/acre)	Seeding Times
Side-Oats	65	8/16-9/30
Winter Rye	50	8/01-10/15
Winter Wheat	60	8/01-10/15
Orchard Grass	12	8/01-10/15
Perennial Ryegrass	80	8/01-10/15
Tall fescue,	80	8/01-10/15
Smooth Brome		
K-31 Fescue	120	9/01-11/15
Ladino Clover	2 <sup>2</sup>	8/15-9/15
Crimson Clover	6 <sup>2</sup>	8/15-9/15
Orchard Grass and Oats or Rye	15 <sup>2</sup>	8/15-9/15
	40 <sup>2</sup>	

<sup>1</sup>If using aerial seeding or other broadcast method to apply seed without rolling or culti-packing, increase seeding rates by 50 percent.

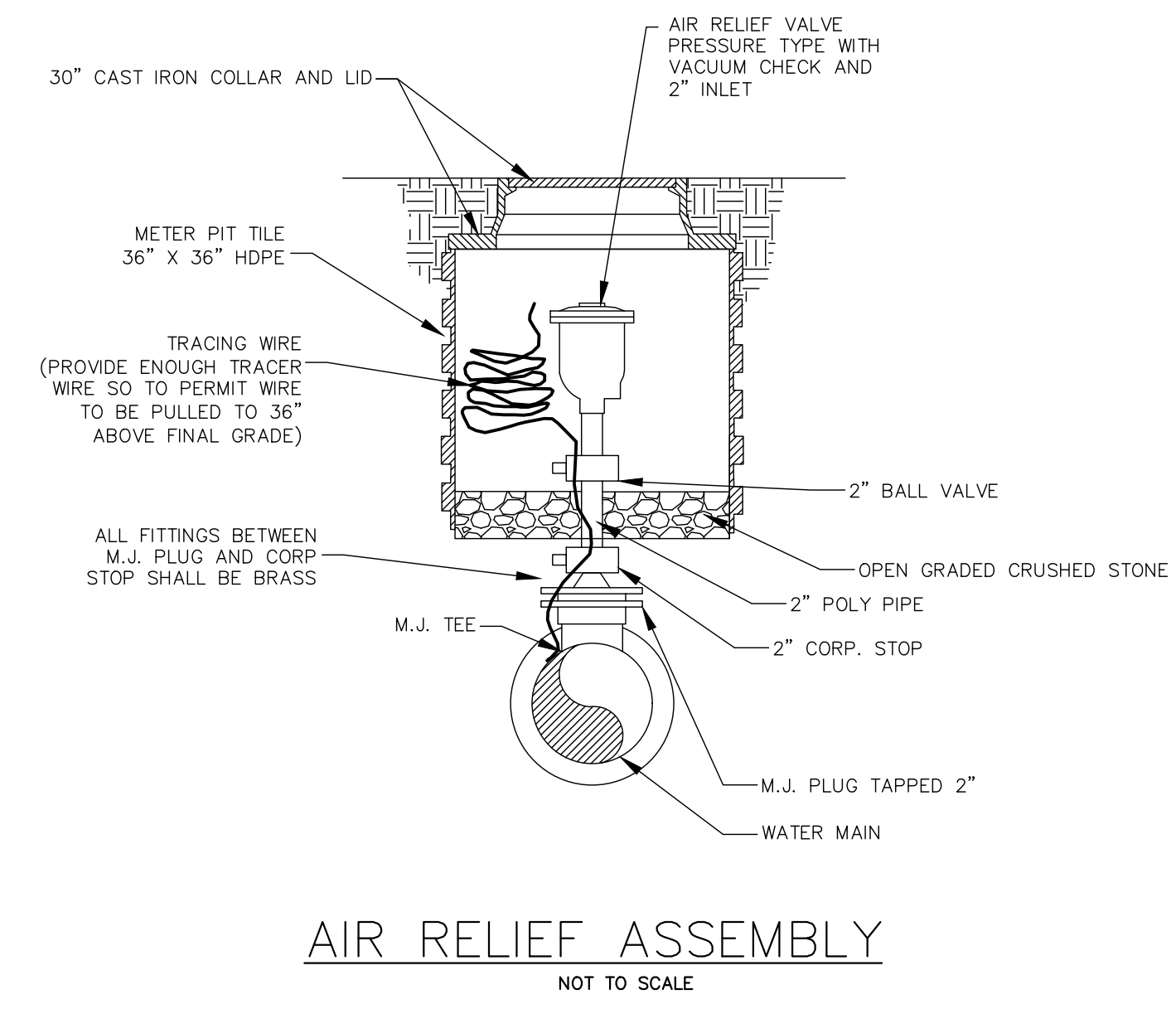
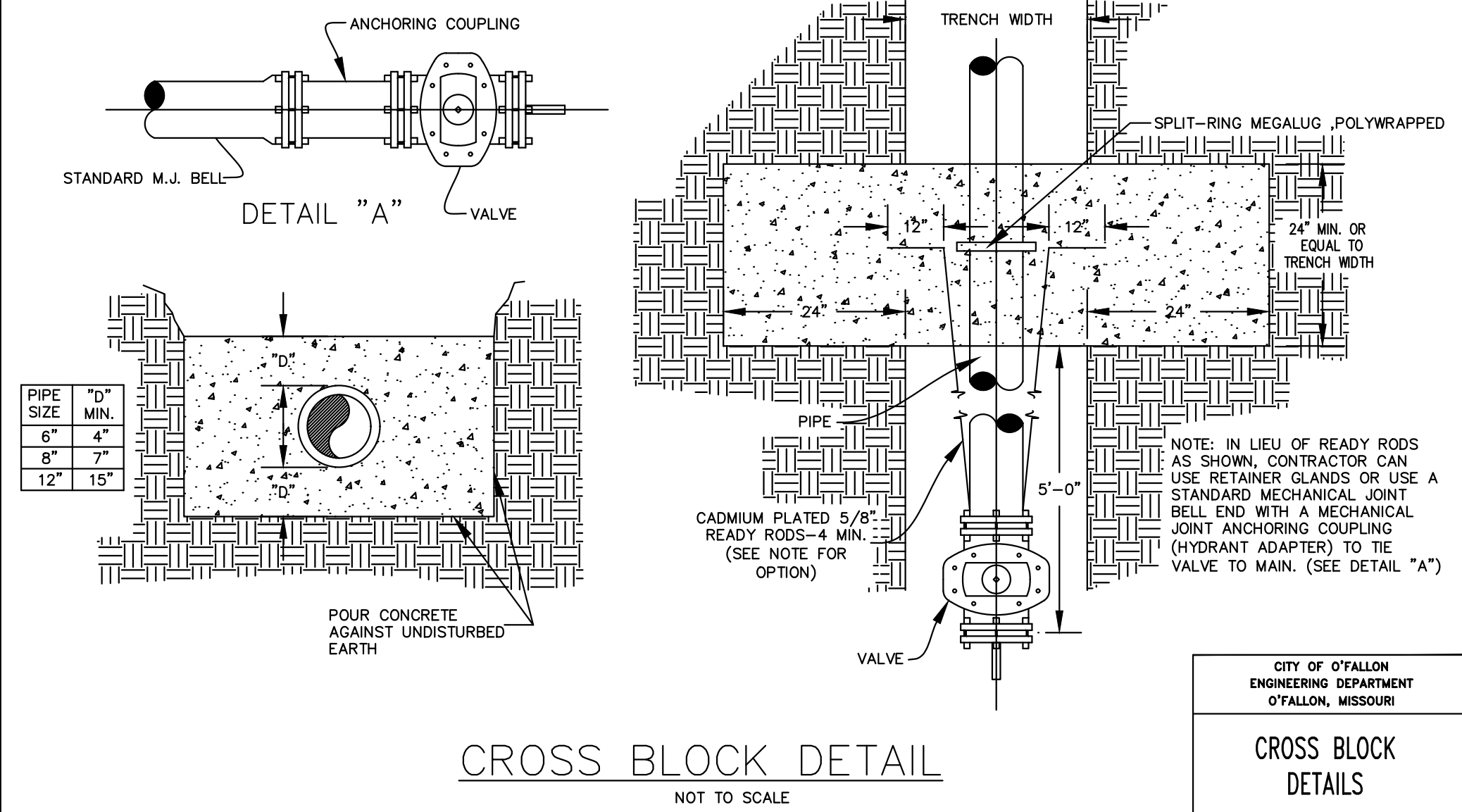
<sup>2</sup>Pure live seed (PLS)

Table 60-8 Temporary Spring Seeding

Plant Species	Rate (lb/acre)	Seeding Dates
Winter Rye	50	3/15-5/31
Spring Oats	65	3/15-5/31
Annual Ryegrass	4 <sup>2</sup>	3/15-6/15
Sudangrass	16 <sup>2</sup>	4/15-6/15
K-31 Fescue	30 <sup>2</sup>	3/15-5/31
Red Clover	2 <sup>2</sup>	3/15-5/31
& Oats	30 <sup>2</sup>	

<sup>1</sup>If using aerial seeding or other broadcast method to apply seed without rolling or culti-packing, increasing seeding rates by 50 percent.

<sup>2</sup>Pure live seed (PLS)



**CHRISTIAN BROTHERS AUTOMOTIVE**  
LOT 3A, HIGHWAY K  
O'FALLON ST. CHARLES COUNTY, MO 63368

**THOROUGH BRED**  
DESIGN | ENGINEER | CONSTRUCT

P.O. BOX 481 LEXINGTON, KY 40588  
(859) 785-0383

CIVIL DESIGN, LAND SURVEYING  
GEOTECHNICAL ENGINEERING, DRILLING SERVICES,  
IBC SPECIAL INSPECTIONS, MATERIAL TESTING,  
CM-CA-CONSTRUCTION SERVICES

STATE OF MISSOURI  
DANIEL J. REINER  
NUMBER PE-2022042444  
PROFESSIONAL ENGINEER

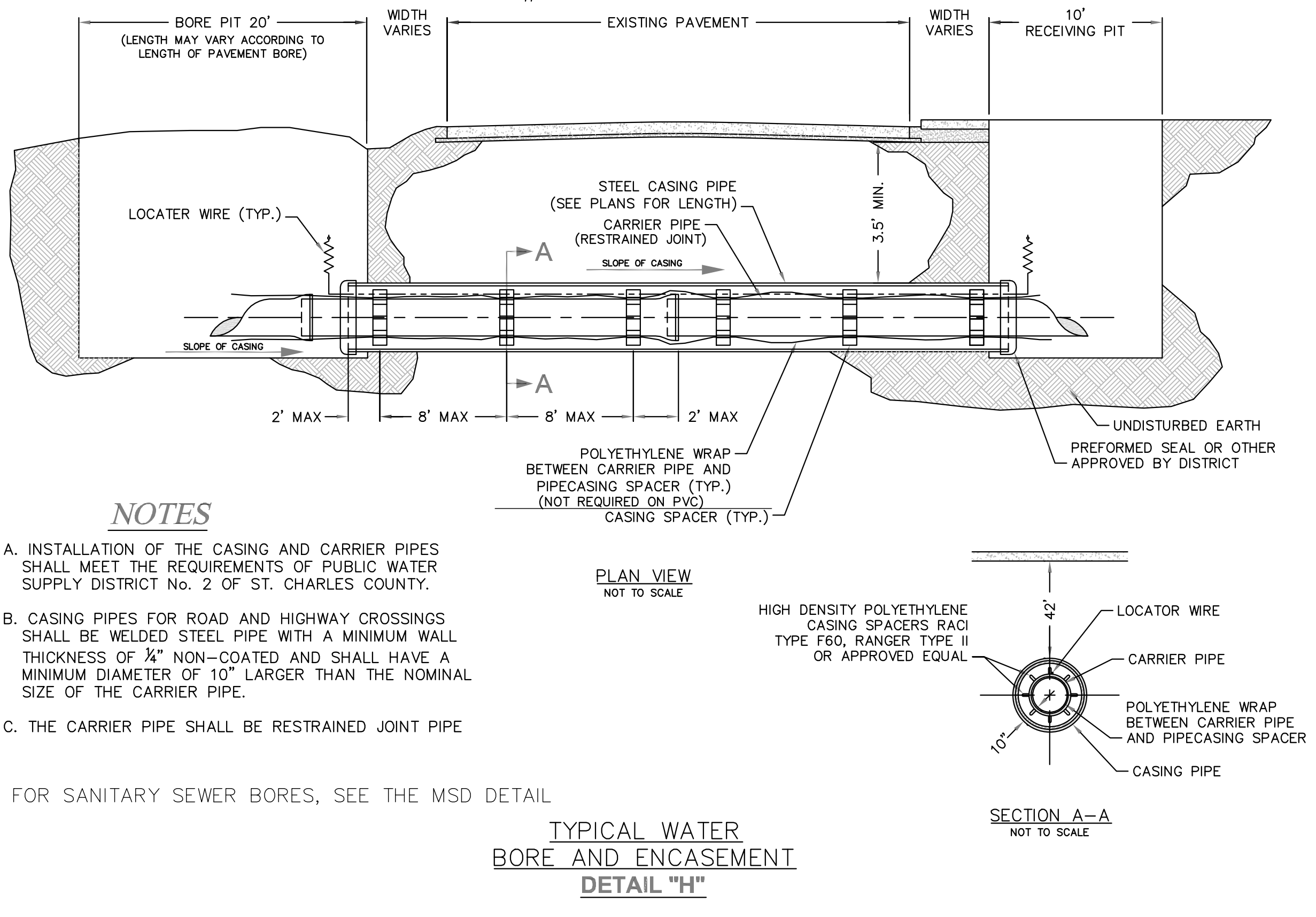
02-09-23

ENGINEER SIGNATURE BLOCK

**CHRISTIAN BROTHERS AUTOMOTIVE**  
17725 KATY FREEWAY SUITE 200  
HOUSTON, TX 77094

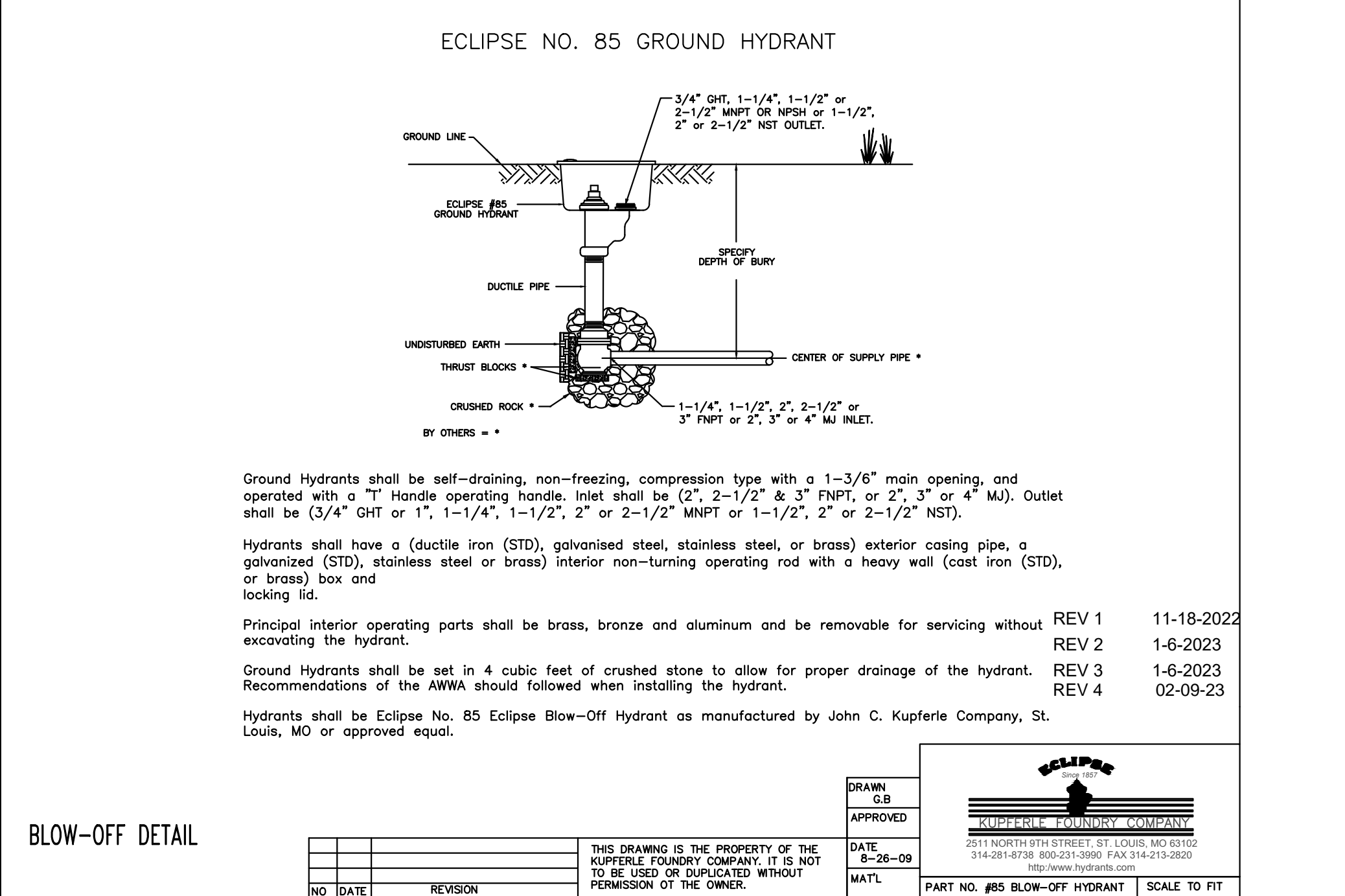
CITY OF O'FALLON WATER DETAILS

NOTE: THIS DETAIL IS FROM PWSD#2



- NOTES**
- INSTALLATION OF THE CASING AND CARRIER PIPES SHALL MEET THE REQUIREMENTS OF PUBLIC WATER SUPPLY DISTRICT NO. 2 OF ST. CHARLES COUNTY.
  - CASING PIPES FOR ROAD AND HIGHWAY CROSSINGS SHALL BE WELDED STEEL PIPE WITH A MINIMUM WALL THICKNESS OF 1/4" NON-COATED AND SHALL HAVE A MINIMUM DIAMETER OF 10" LARGER THAN THE NOMINAL SIZE OF THE CARRIER PIPE.
  - THE CARRIER PIPE SHALL BE RESTRAINED JOINT PIPE

FOR SANITARY SEWER BORES, SEE THE MSD DETAIL



**CHRISTIAN BROTHERS AUTOMOTIVE**  
17725 KATY FREEWAY SUITE 200  
HOUSTON, TX 77094

CITY OF O'FALLON WATER DETAILS

P+Z No.

City No.

Page No.

**C-6.1**