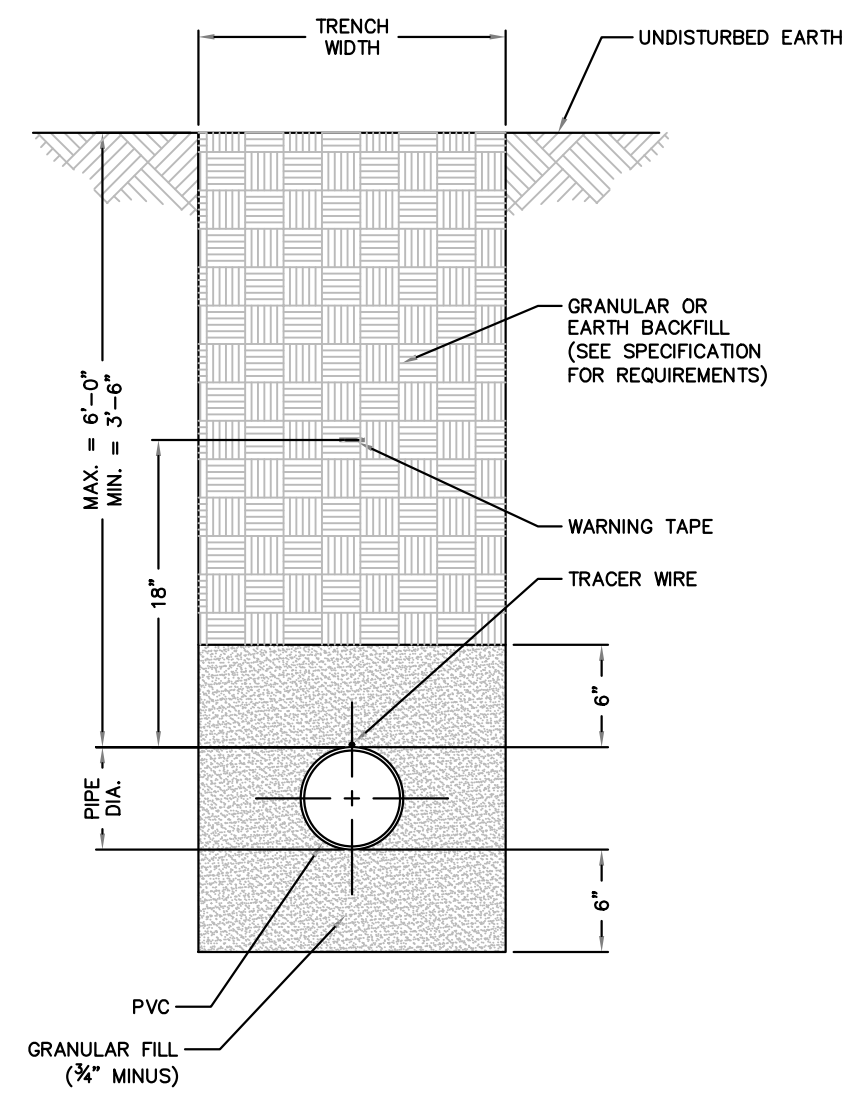
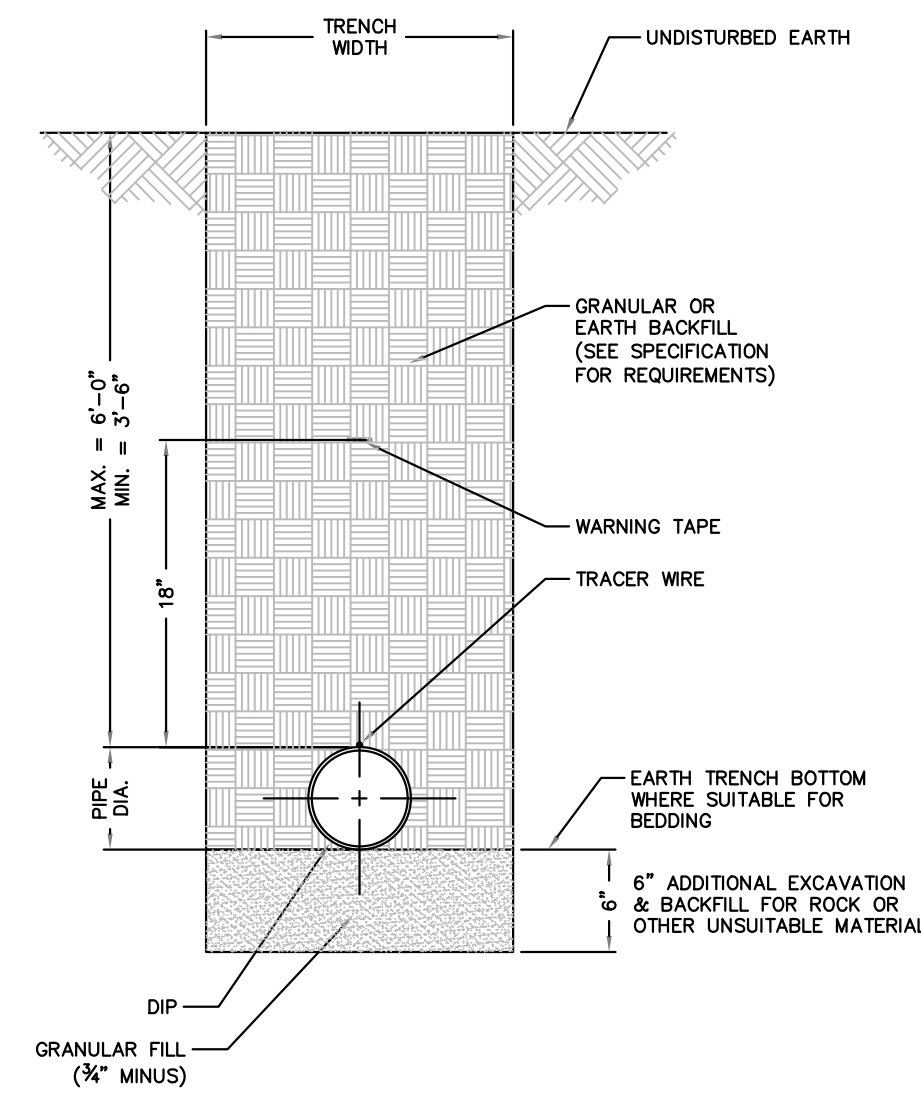


NOTE: THIS DETAIL IS FROM PWS#2

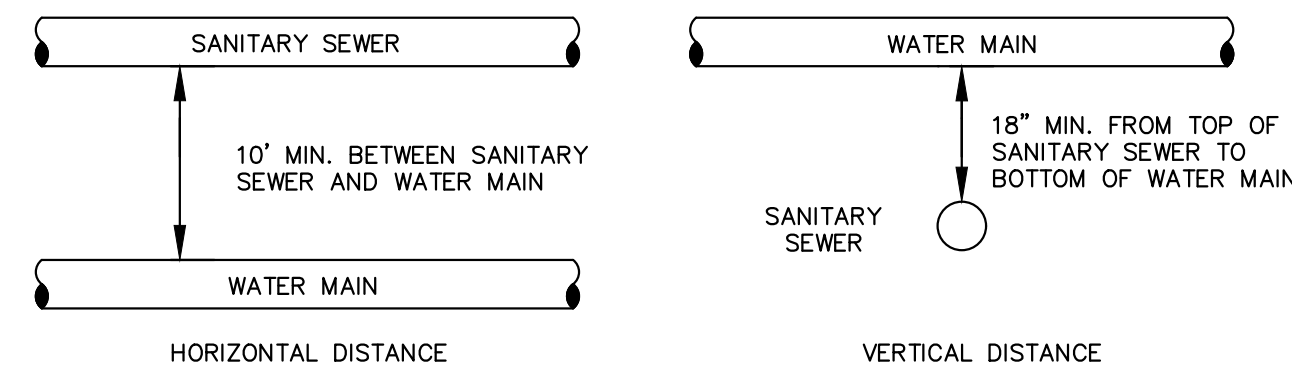


TYPICAL TRENCH SECTION FOR PVC PIPE
NOT TO SCALE
DETAIL "A"
PAGE 1 OF 2

NOTE: THIS DETAIL IS FROM PWS#2



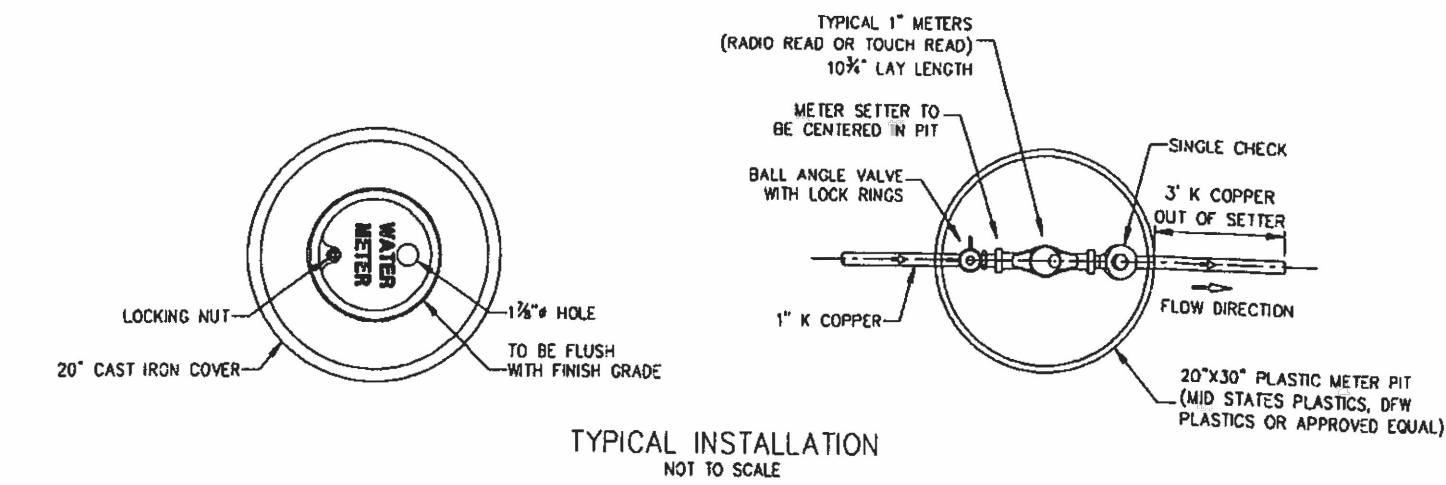
TYPICAL TRENCH SECTION FOR DUCTILE IRON PIPE
NOT TO SCALE
DETAIL "A"
PAGE 2 OF 2



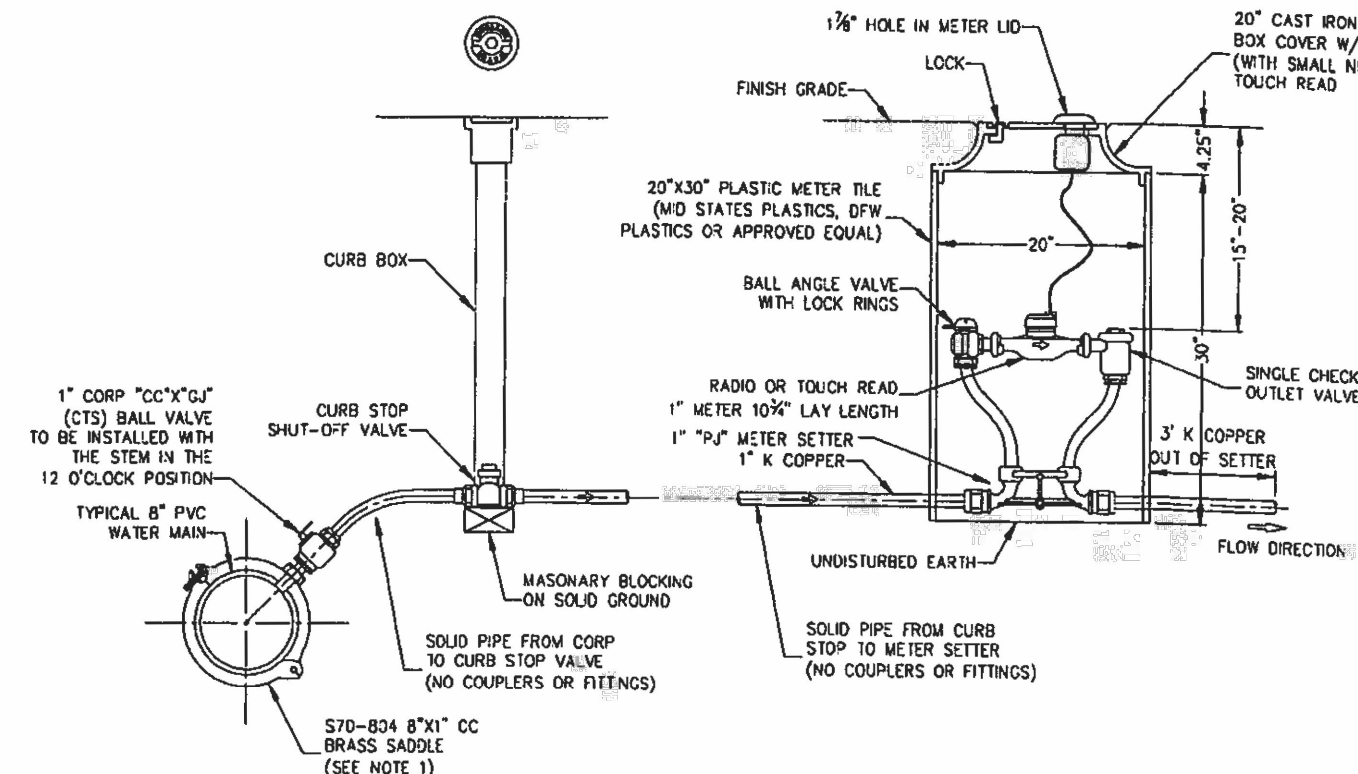
TYPICAL WATER AND SEWER SEPARATION
NOT TO SCALE

CITY OF O'FALLON
ENGINEERING DEPARTMENT
O'FALLON, MISSOURI
WATER AND SEWER SEPARATION DETAIL

Ductile Iron Pipe installation shall follow the Ductile Iron Research Association (DIPRA) guide line.
The Installation of PVC Pipe shall follow the Uni-Bell PVC Pipe Association Handbook of PVC Design and Construction.



TYPICAL INSTALLATION
NOT TO SCALE



TYPICAL 1\"/>

APRIL 20, 2025
REV. 5/1/2017
REV. 5/1/2014

CHRISTIAN BROTHERS AUTOMOTIVE
LOT 3A, HIGHWAY K
O'FALLON ST. CHARLES COUNTY, MO 63368

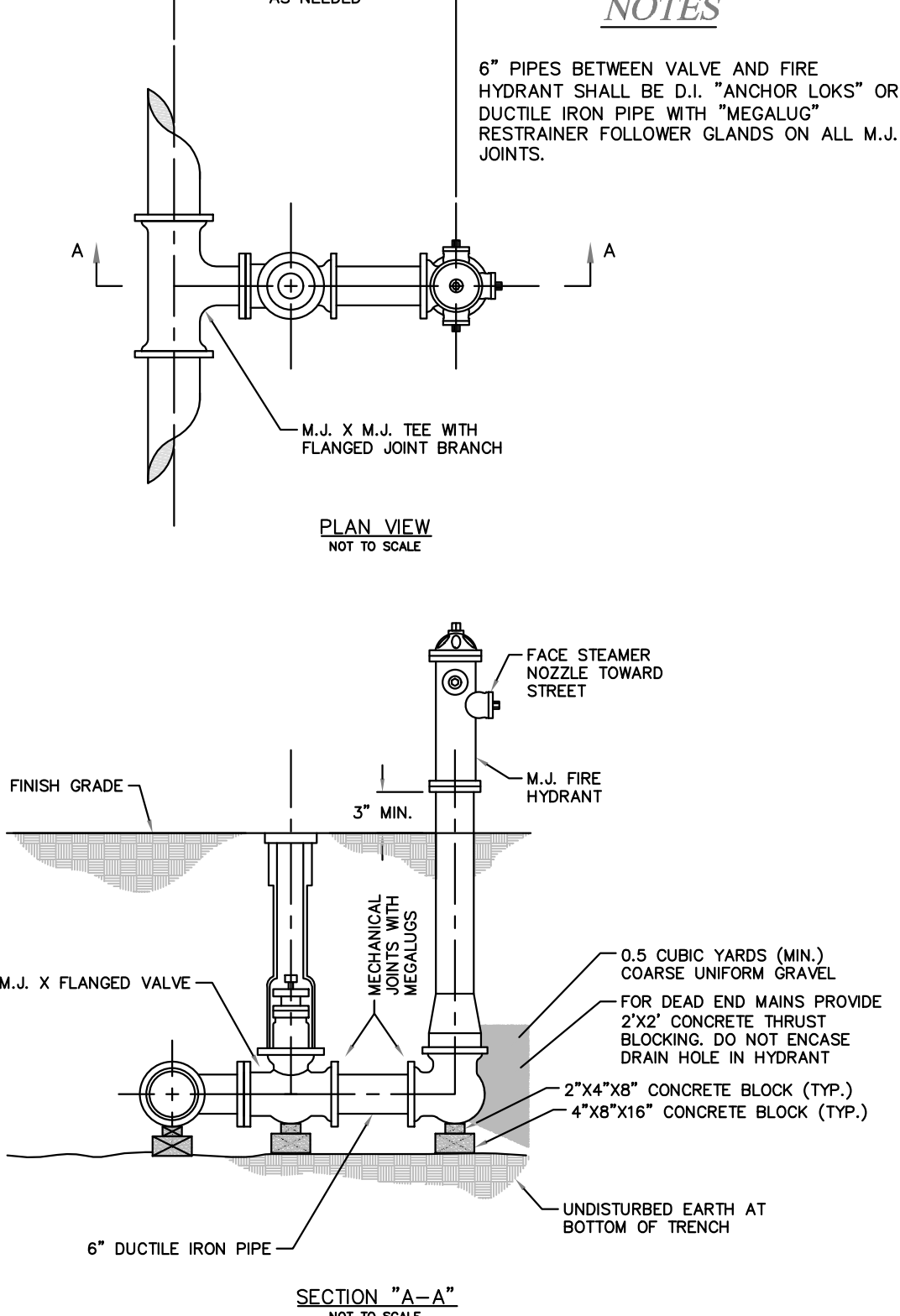
THOROUGH BRED
DESIGN | ENGINEER | CONSTRUCT
P.O. BOX 481 | LEXINGTON, KY 40588
(859) 785-0383
CIVIL DESIGN, LAND SURVEYING
GEO TECHNICAL ENGINEERING, DRILLING SERVICES,
IBC SPECIAL INSPECTIONS, MATERIAL TESTING,
CM-AT-CONSTRUCTION SERVICES

ENGINEER SIGNATURE
BLOCK



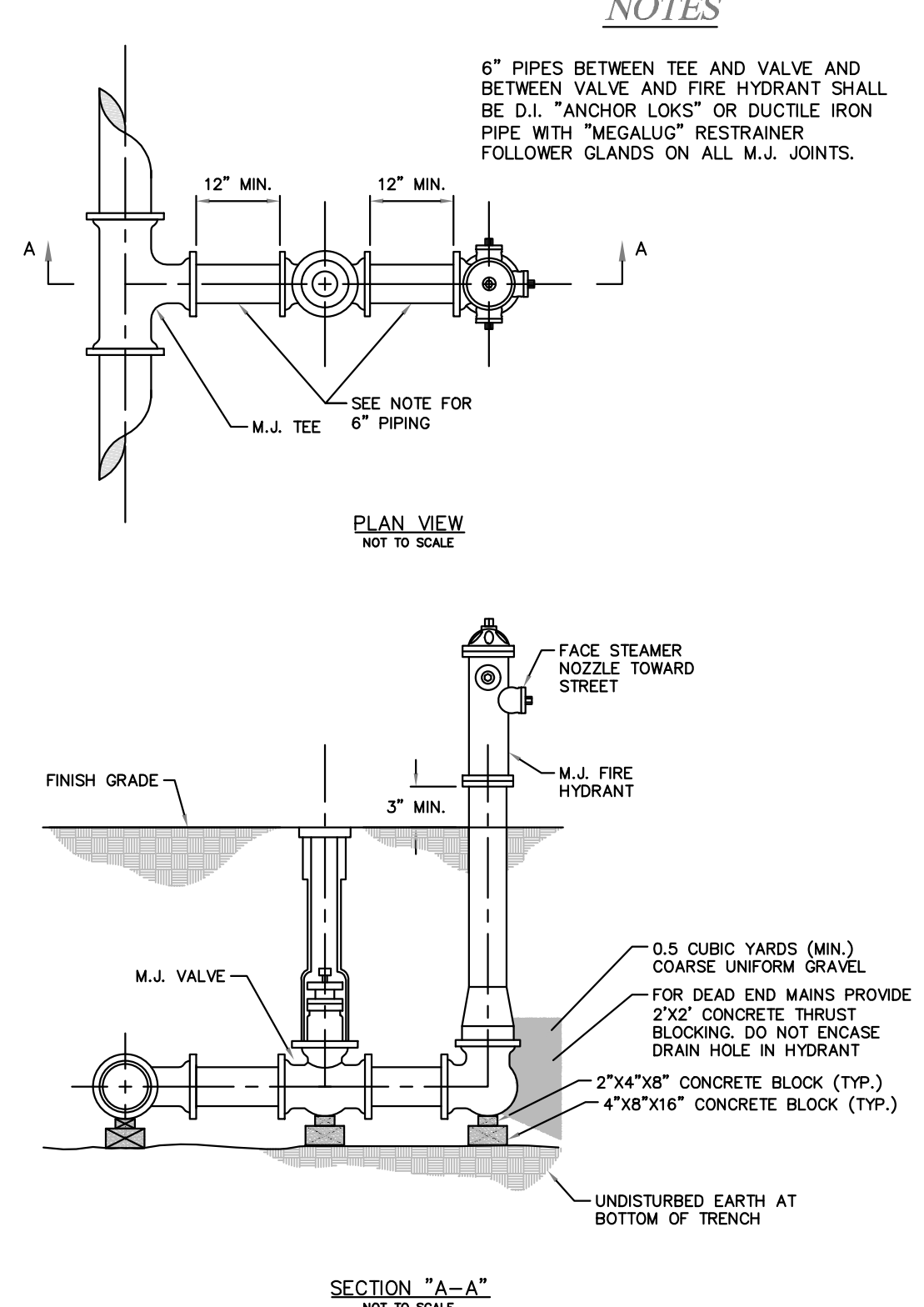
02-09-23

NOTE: THIS DETAIL IS FROM PWS#2



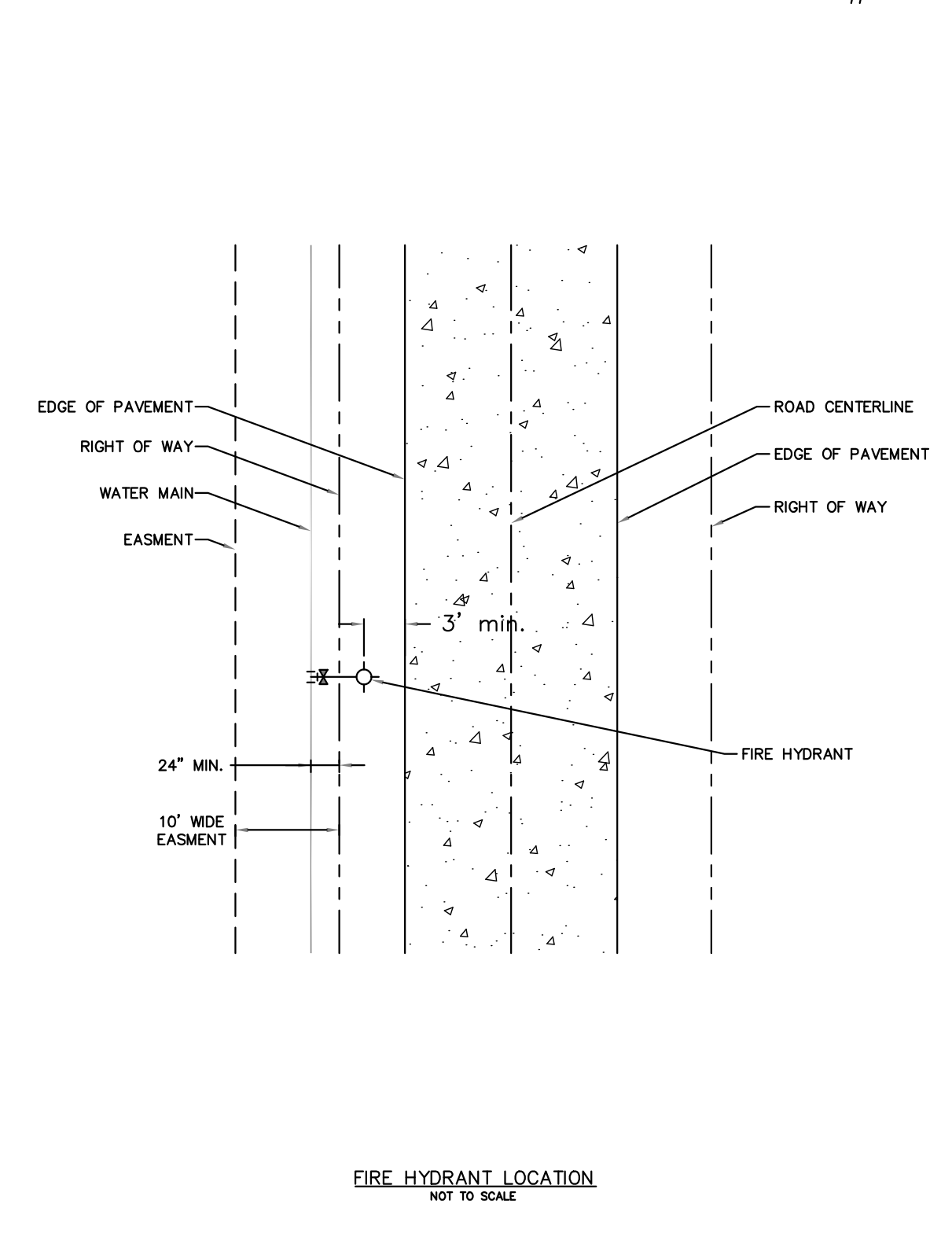
FIRE HYDRANT DETAIL SECTION "A-A"
NOT TO SCALE
PAGE 1 OF 3

NOTE: THIS DETAIL IS FROM PWS#2

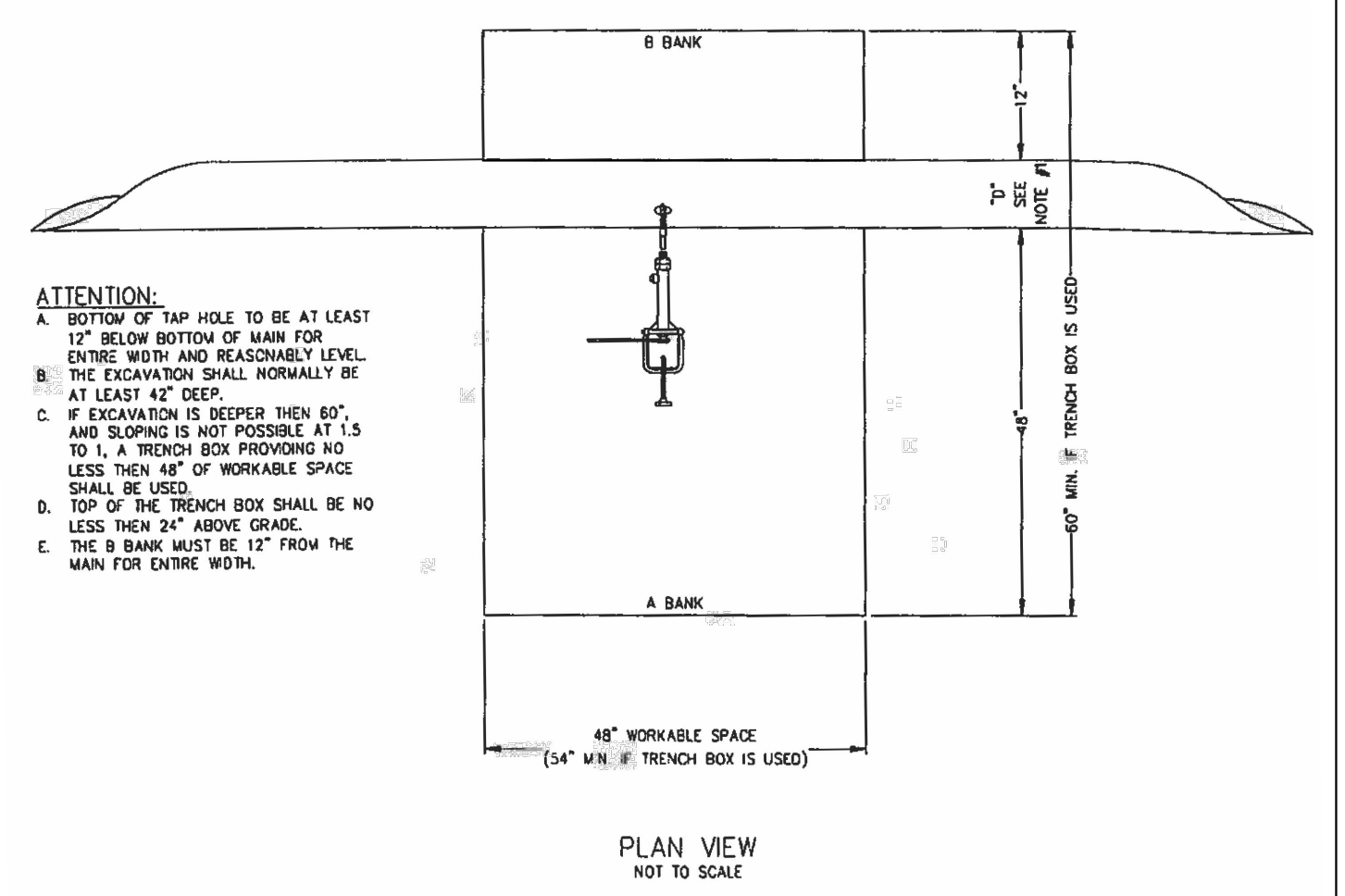


FIRE HYDRANT DETAIL SECTION "B-B"
NOT TO SCALE
PAGE 2 OF 3

NOTE: MODIFIED DETAIL FROM PWS#2



FIRE HYDRANT LOCATION
NOT TO SCALE
PAGE 3 OF 3



TYPICAL 3/4\"/>

APRIL 20, 2025
REV. 5/1/2017
REV. 5/1/2014

CHRISTIAN BROTHERS AUTOMOTIVE
17725 KATY FREEWAY SUITE 200
HOUSTON, TX 77094

CITY OF O'FALLON WATER DETAILS

P+Z No.

City No.

Page No.

C-6.2

REV 1 11-18-2022
REV 2 1-6-2023
REV 3 1-6-2023
REV 4 July 2019
02-09-23
City of O'Fallon Standard Notes and Details