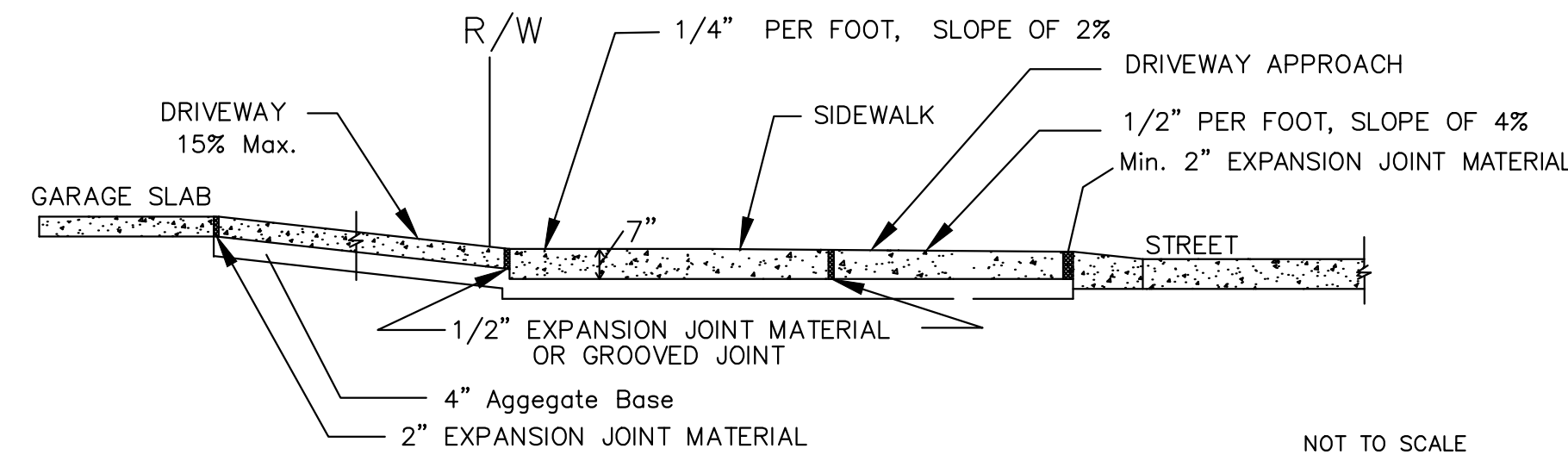
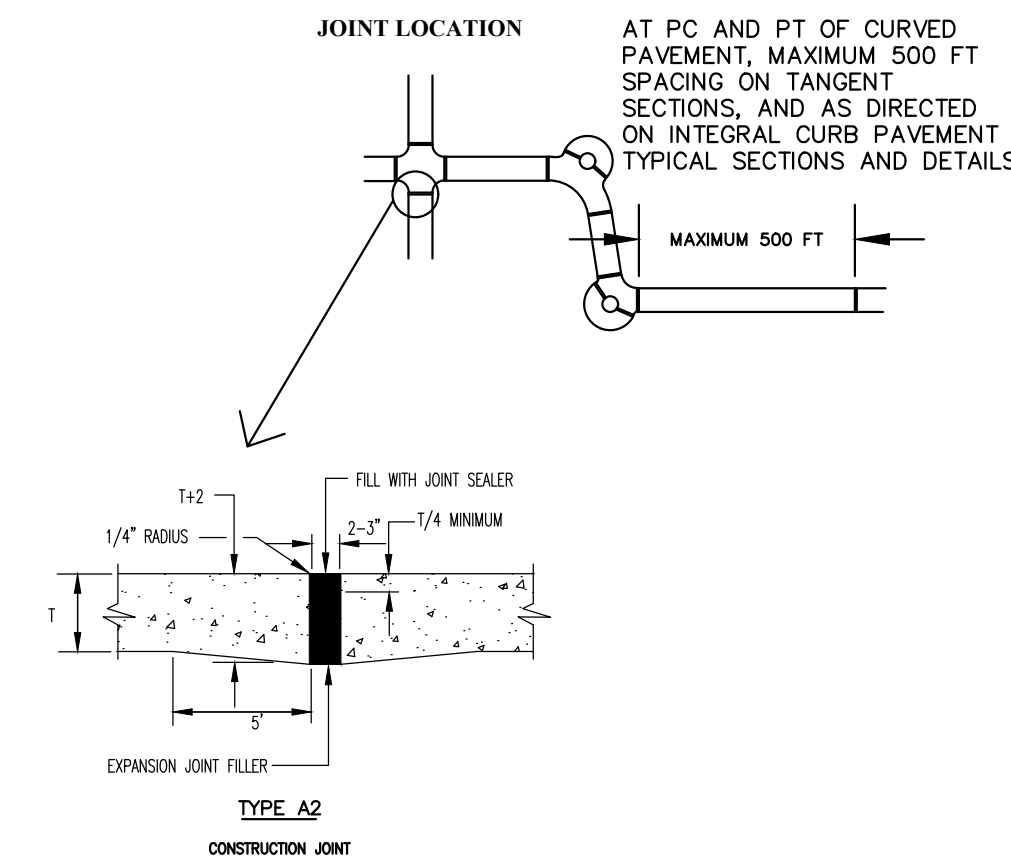


THE ASPHALT SURFACE SHALL BE COMPACTED TO 98% MAXIMUM DENSITY



- NOTES:
- All driveway entrances shall be six (7) inches P.C.C. in depth from the curb to the property line.
 - All driveway approaches constructed in conjunction with sidewalk shall give the appearance that the sidewalk is continuous. That portion of the driveway approach that doubles as a sidewalk shall have a one-fourth (1/4) inch per foot cross slope the same as the abutting sidewalk.
 - A two (2) inch expansion joint is required between the street and driveway approach. One (1) additional two (2) inch expansion joint is required between the garage floor and the termination of the driveway.

CITY OF O'FALLON
ENGINEERING DEPARTMENT
O'FALLON, MISSOURI
Integral Curb Detail
"B" at Driveway
SECTION NO. 405.210 (C)



- NOTES:
- JOINT FILLER COMPOSED OF CELLULAR FIBERS, ASTM D-1751, MAY BE USED AT DRIVEWAY, SIDEWALK, AND SEWER INLET AND MANHOLE LOCATIONS.
 - SEE "INTEGRAL CURB DETAIL "B" AT DRIVEWAYS" FOR EXPANSION JOINT REQUIREMENTS AT DRIVEWAY CONNECTIONS TO THE STREET AND THE GARAGE.

CITY OF O'FALLON
ENGINEERING DEPARTMENT
O'FALLON, MISSOURI
PAVEMENT CONSTRUCTION
DETAIL

- REV 1 11-18-2022
REV 2 1-6-2023
REV 3 1-6-2023
REV 4 02-09-23

CHRISTIAN BROTHERS AUTOMOTIVE
LOT 9A, HIGHWAY K
O'FALLON ST. CHARLES COUNTY, MO 63368

THOROUGH BRED
DESIGN | ENGINEER | CONSTRUCT
P.O. BOX 481 LEXINGTON, KY 40588
(859) 785-0383
CIVIL DESIGN, LAND SURVEYING,
GEOTECHNICAL ENGINEERING, DRILLING SERVICES,
IBC SPECIAL INSPECTIONS, MATERIAL TESTING,
CM-CAI-CONSTRUCTION SERVICES

ENGINEER SIGNATURE
BLOCK



02-09-23

CHRISTIAN BROTHERS AUTOMOTIVE
17725 KATY FREEWAY SUITE 200
HOUSTON, TX 77094

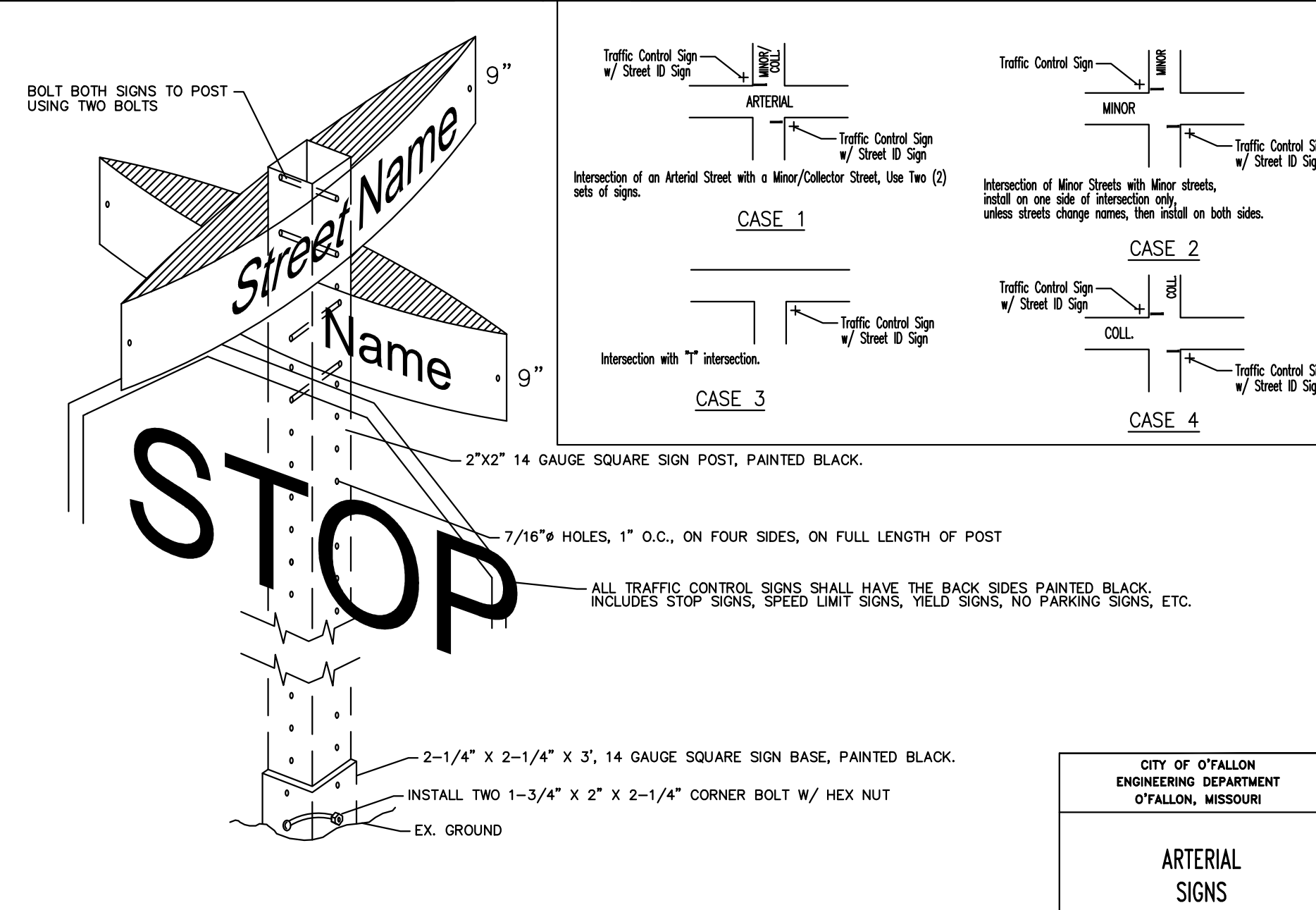
CITY OF O'FALLON PAVEMENT DETAILS

P+Z No.

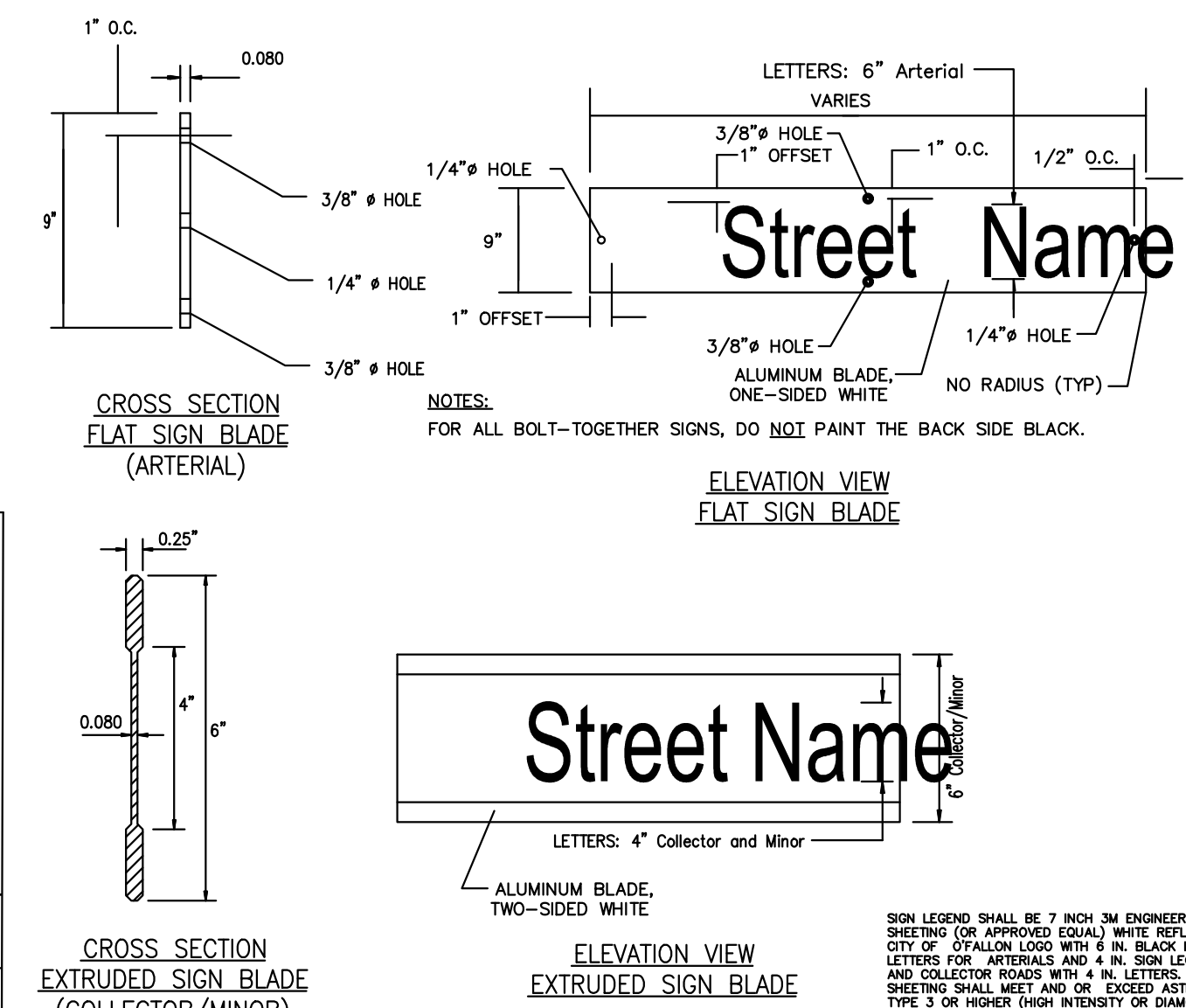
City No.

Page No.

C-6.3



CITY OF O'FALLON
ENGINEERING DEPARTMENT
O'FALLON, MISSOURI
ARTERIAL
SIGNS



- GENERAL NOTES:
- ALL SIGN POST AND BACK OF SIGNS THAT ARE TO BE PAINTED BLACK SHALL USE A PAINT SYSTEM THAT PROVIDES A MINIMUM 7-YEAR LIFE EXPECTANCY. MAY USE: 2) "CARBOLINE RUSTBOND" BASE AT 1-2 MILS THICK, "CARBOLINE 803 90" MID-LAYER AT 3-6 MILS THICK, "CARBOLINE 133 HP" TOP COAT, OR 3) ELECTROSTATIC APPLIED BLACK POWDER COATED AND BAKED ON PAINT SYSTEM AT 2-3 MILS THICKNESS, OR 4) APPROVED EQUAL.
 - ALL SIGN LOCATIONS AND SIZES MUST BE APPROVED BY THE ENGINEERING DIVISION PRIOR TO INSTALLATION.
 - STREET NAME SIGN PLATES SHALL BE 8 INCHES WIDE FLAT, BOLT TOGETHER FOR ANY ARTERIAL INTERSECTIONS AND 8 INCHES WIDE EXTRUDED ALUMINUM PANELS FOR ALL MINOR AND COLLECTOR ROADS. TYPICAL LENGTHS FOR MINOR AND COLLECTOR SIGNS SHALL BE 24, 30 & 36 INCH LENGTHS, OR LONGER AS NEEDED, TO ACCOMMODATE STREET NAME. SIGN LEGEND SHALL BE 7 INCH 3M ENGINEER GRADE SHEETING (OR APPROVED EQUAL) WHITE REFLECTIVE WITH THE CITY OF O'FALLON LOGO WITH 6 IN. BLACK NON-REFLECTIVE LETTERS FOR ARTERIALS AND 4 IN. SIGN LEGEND FOR MINOR AND COLLECTOR ROADS WITH 4 IN. LETTERS. ALL REFLECTIVE SHEETING SHALL MEET AND OR EXCEED ASTM D 4958 SPEC, TYPE 3 OR HIGHER (HIGH INTENSITY OR DIAMOND GRADE).
 - "CLEARVIEW" FONT SHALL BE USED ON ALL STREET SIGNS. SIGN POSTS SHALL BE HEAVY "T" CHANNEL (2 LBS/FT) PAINTED BLACK STEEL POSTS FOR COLLECTOR/MINOR STREETS. ARTERIAL STREETS SHALL HAVE 2" SQUARE POSTS WITH BREAKAWAY ASSEMBLY.
 - SIGN POSTS SHALL EXTEND A MINIMUM OF 30 INCHES IN THE GROUND AND FULL.
 - THE CONTRACTOR SHALL BE RESPONSIBLE FOR VERIFICATION OF UNDERGROUND UTILITIES AND STRUCTURES PRIOR TO NOT SIGNING. PLEASE CONTACT CITY FOR LOCATION OF CITY UTILITIES NOT FOUND BY DIG-BITE SERVICES.
 - SIGNS SHALL NOT CREATE A SITE DISTANCE PROBLEM OR CONFLICT WITH PEDESTRIAN TRAFFIC. SIGN OVERLAP OR SUBVISION ALONG THE LOT LINE BETWEEN FIRST AND SECOND LOT AND APPROXIMATELY EVERY TWO THOUSAND (2000) FEET THEREAFTER. ALSO, EVERY CONNECTING SIDE STREET MUST HAVE ONE SPEED LIMIT SIGN APPROXIMATELY FIFTY FEET FROM INTERSECTION AND APPROXIMATELY EVERY TWO THOUSAND FEET (2000) THEREAFTER.
 - ALL SIGNS UNLESS OTHERWISE STATED, SHOULD BE CONSTRUCTED AND INSTALLED PER MUTCD.
 - THE ASPHALT SURFACE SHALL BE COMPACTED TO 98% MAXIMUM DENSITY.

CITY OF O'FALLON
ENGINEERING DEPARTMENT
O'FALLON, MISSOURI
SIGNS,
DETAILS AND LOCATIONS