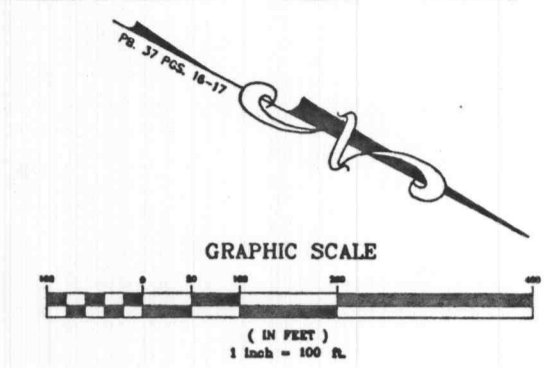
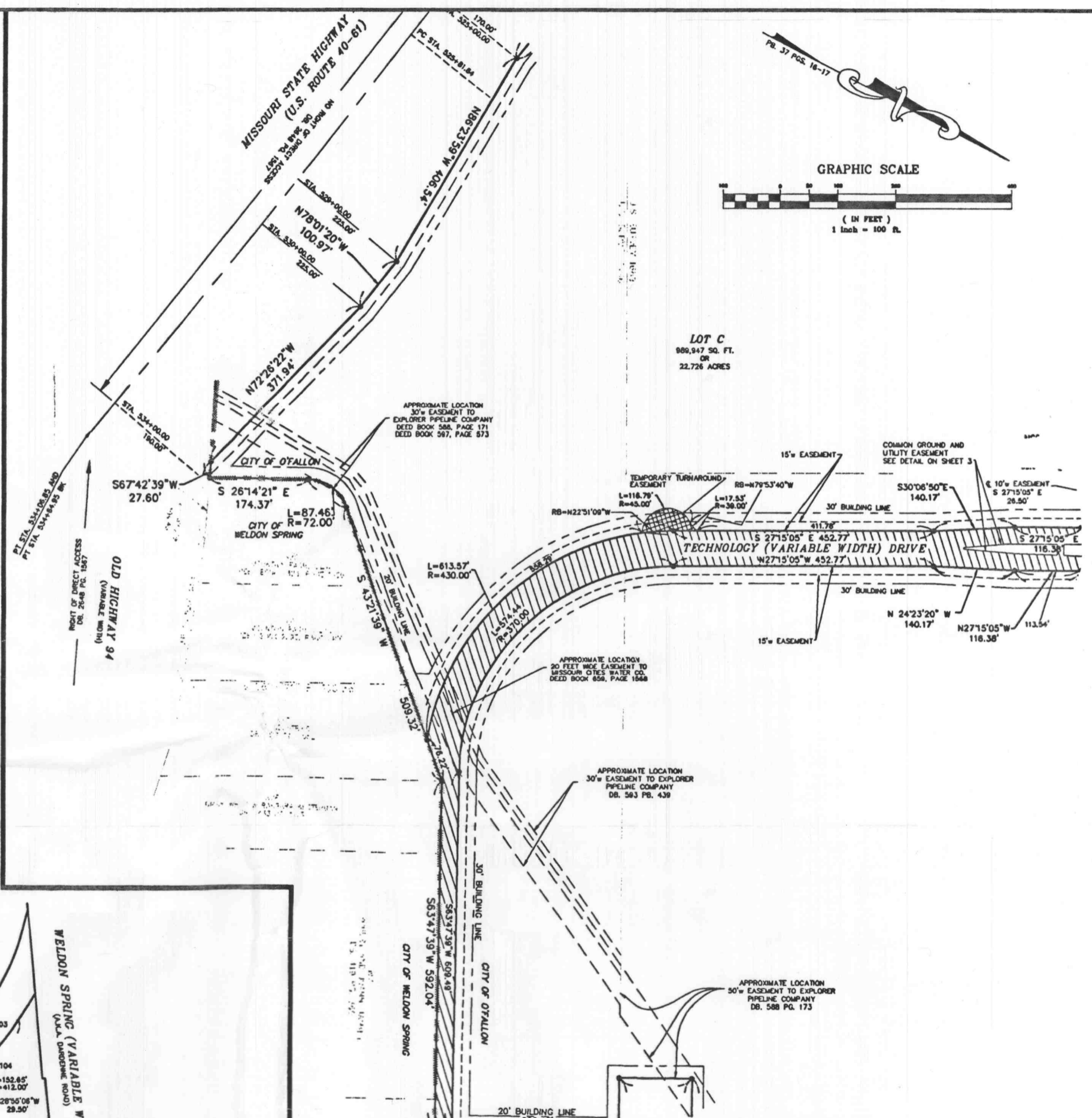
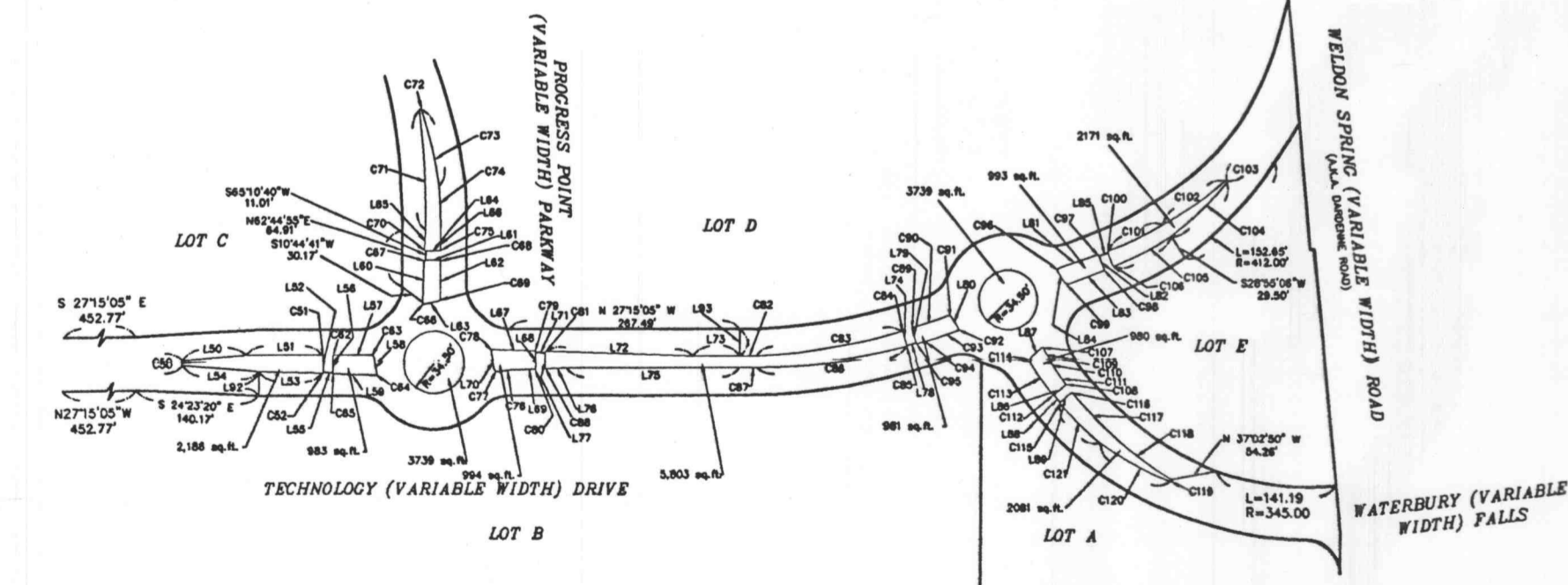
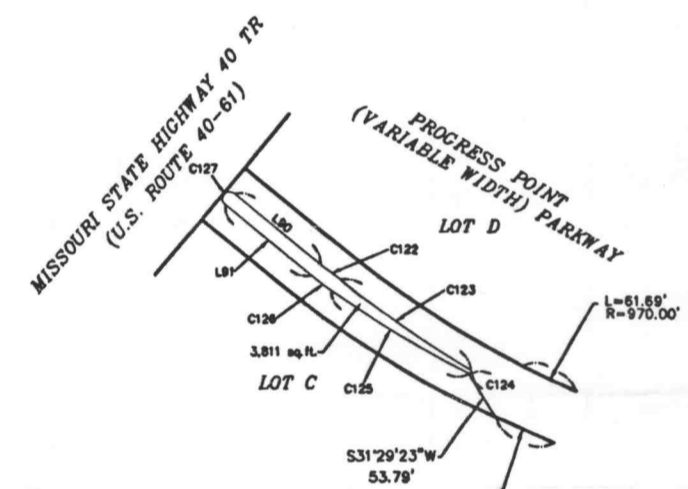
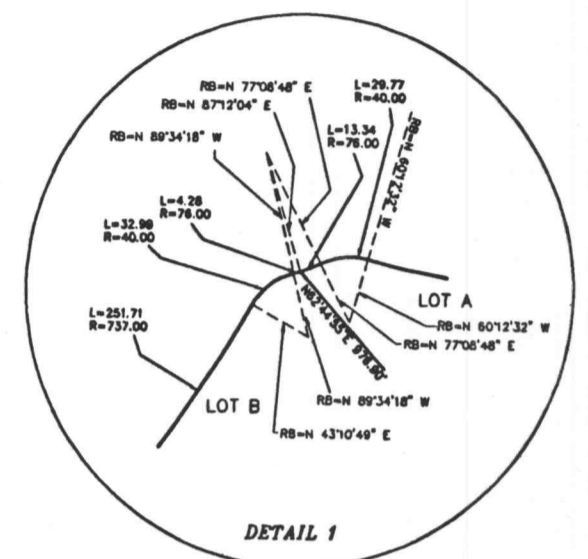


CURVE	LENGTH	RADIUS
C50	4.46	150
C51	2.36	150
C52	2.41	150
C53	2.36	150
C54	6.40	450
C55	3.60	450
C56	2.31	150
C57	2.31	150
C58	2.36	150
C59	2.41	150
C60	2.36	150
C61	2.41	150
C62	129.92	839.72
C63	4.47	150
C64	91.32	607.50
C65	91.40	607.50
C66	2.36	150
C67	2.41	150
C68	2.36	150
C69	2.41	150
C70	2.36	150
C71	2.41	150
C72	2.36	150
C73	2.41	150
C74	2.36	150
C75	2.41	150
C76	2.36	150
C77	2.41	150
C78	2.36	150
C79	2.41	150
C80	2.36	150
C81	2.41	150
C82	19.48	694.50
C83	17.17	692.50
C84	2.36	150
C85	2.41	150
C86	177.04	712.50
C87	15.75	705.50
C88	2.41	150
C89	2.36	150
C90	2.41	150
C91	2.36	150
C92	2.41	150
C93	2.36	150
C94	2.41	150
C95	2.36	150
C96	2.41	150
C97	2.36	150
C98	2.41	150
C99	2.36	150
C100	2.41	150
C101	69.89	362.50
C102	82.72	362.50
C103	4.49	150
C104	89.89	362.50
C105	74.64	362.50
C106	2.36	150
C107	2.41	150
C108	2.36	150
C109	12.45	82.00
C110	21.06	362.50
C111	12.23	362.50
C112	2.36	150
C113	42.39	362.50
C114	6.98	450
C115	2.36	150
C116	2.41	150
C117	61.84	362.50
C118	91.73	362.50
C119	4.49	150
C120	93.11	362.50
C121	65.91	362.50
C122	25.56	362.50
C123	164.82	596.50
C124	6.15	80.00
C125	162.38	596.50
C126	25.56	362.50
C127	23.56	7.50

LINE	LENGTH	BEARING
L50	72.19	S32°41'23"E
L51	88.02	S27°15'25"E
L52	15.67	N62°44'55"E
L53	73.28	S25°20'38"E
L54	86.97	S22°28'47"E
L55	11.81	N24°49'20"E
L56	16.14	N62°44'55"E
L57	38.15	S27°15'25"E
L58	19.11	S31°50'19"E
L59	47.71	S25°20'38"E
L60	47.71	S24°39'22"E
L61	16.14	S27°15'25"E
L62	38.15	N62°44'55"E
L63	15.11	N28°22'41"E
L64	21.85	N62°44'55"E
L65	15.67	S27°15'25"E
L66	21.80	S64°39'28"E
L67	47.71	N25°20'38"E
L68	15.37	N62°44'55"E
L69	23.56	S29°29'28"E
L70	17.11	N51°26'19"E
L71	11.81	N24°49'20"E
L72	176.83	N25°20'38"E
L73	54.25	N27°15'25"E
L74	15.47	S46°15'38"E
L75	20.41	S27°15'25"E
L76	22.98	S29°29'28"E
L77	14.44	N62°44'55"E
L78	11.81	N41°18'20"E
L79	16.87	S46°15'38"E
L80	14.57	S28°43'39"E
L81	47.72	N46°08'53"E
L82	16.33	S41°48'00"E
L83	42.38	N48°04'45"E
L84	15.25	S30°14'55"E
L85	11.81	N46°08'53"E
L86	16.57	S67°01'24"E
L87	14.34	N46°08'53"E
L88	11.80	N28°22'41"E
L89	16.08	S67°01'24"E
L90	117.00	N18°23'06"E
L91	117.00	N18°23'06"E
L92	28.27	S62°48'28"E
L93	31.50	N62°44'55"E



1. REVISED 2/5/02; REVISED PER CITY OF OYALLON COMMENTS

**PROGRESS POINT
RECORD PLAT**

**STOCK & ASSOCIATES
CONSULTING ENGINEERS, INC.**

425 NORTH NEW BALLAS ROAD
SUITE 140
ST. LOUIS, MO. 63141
PH. (314) 432-8100
FAX (314) 432-8171
e-mail: genar@stockassoc.com

DATE PLOTTED	DATE CHECKED	DATE 28	SHEET
J.K. 1/25/02	D.W.T. 1/25/02	200-2180	3 of 4