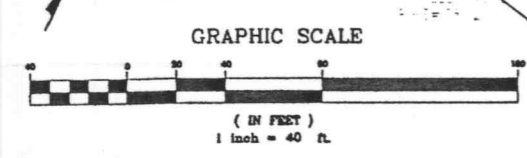
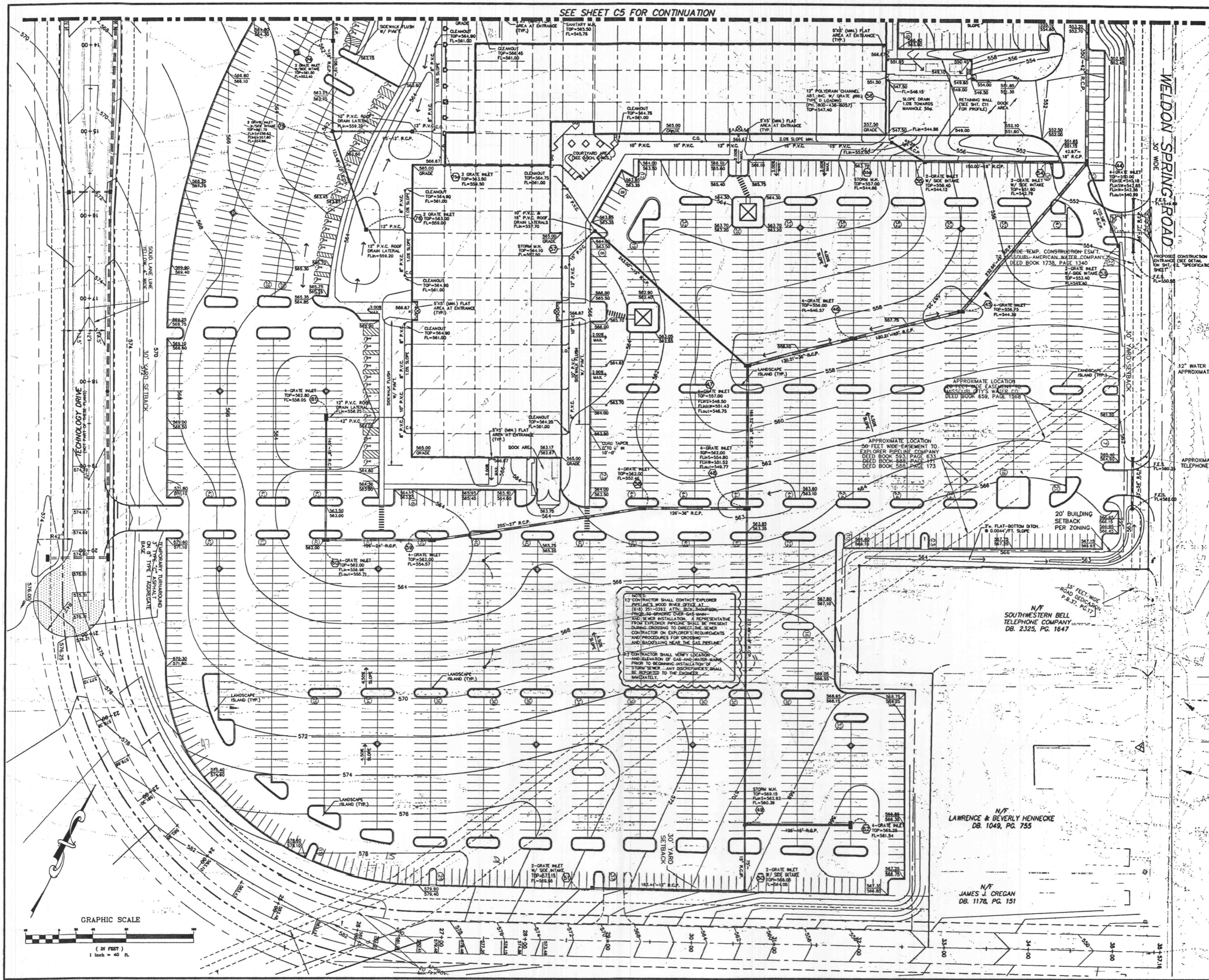


SEE SHEET C5 FOR CONTINUATION



NOTES:  
 1) CONTRACTOR SHALL CONTACT EXPLORER TO LOCATE 3" RIVER STEEL AT (618) 251-0282 ATTN: BOB INSPIRATION. PROBLEMS ARISING OVER GAS MAINS AND SEWER INSTALLATION. A REPRESENTATIVE FROM EXPLORER PIPELINE SHALL BE PRESENT DURING CROSSING TO DIRECT THE SEWER CONTRACTOR ON EXPLORER'S REQUIREMENTS AND PROCEDURES FOR CROSSING AND BACKFILLING NEAR THE GAS PIPELINE.  
 2) CONTRACTOR SHALL VERIFY LOCATION AND DEPTH OF GAS AND WATER MAINS PRIOR TO BEGINNING INSTALLATION OF STORM SEWER. ANY DISCREPANCIES SHALL BE REPORTED TO THE ENGINEER IMMEDIATELY.

N/F LAWRENCE & BEVERLY HENNECKE DB. 1049, PG. 755

N/F JAMES J. CREGAN DB. 1178, PG. 151

STATE OF MISSOURI  
**GEORGE MICHAEL STOCK**  
 PROFESSIONAL ENGINEER  
 LICENSE NO. 25116  
 GEORGE MICHAEL STOCK & ASSOCIATES, INC.  
 1000 N. WILSON ROAD  
 SUITE 100  
 ST. LOUIS, MO 63141  
 PH (314) 432-8100  
 FAX (314) 432-8171  
 e-mail: gmstock@stockassoc.com

Architect  
**Forum Studio**  
 Structural Engineer  
**Alper Audi**  
 Fire Protection Engineer  
 Plumbing Engineer  
 Mechanical Engineer  
 Electrical Engineer

**CLAYCO**  
 CLAYCO CONSTRUCTION COMPANY  
 2199 Inverhoff Business Center Dr.  
 St. Louis, MO 63114  
 Ph 314.429.5100 Fx 314.429.3185

**TRISTAR**  
 TRISTAR BUSINESS COMMUNITIES  
 13397 Lakefront Drive  
 St. Louis, MO 63045  
 Ph 314.291.0814

**citi mortgage**  
 Progress Point O'Fallon, MO

Rev. No.	Description	Date
1	PROGRESS SET 1	01-07-02
2	FMV BD/PERMAT PKG (INFORMATION ONLY)	01-18-02
3	ISSUE	01-31-02
4	PROGRESS SET 3	03-18-02
5	CITY COMMENTS	04-18-02
6	CITY COMMENTS	04-25-02

The Professional Engineers seal affixed to this sheet indicates that the named Engineer has prepared or directed the preparation of the material shown only on this sheet. Other drawings and documents not exhibiting this seal shall not be considered prepared by or the responsibility of the undersigned.

Drawing Title  
**SITE AND GRADING PLAN**

Drawing No.  
**C4**

Scale 1"=40'

Drawn By P.J.E.B. Check By G.M.S.K.

Date 1-19-02