



Architect  
**Forum Studio**  
 Project Engineer  
**Alper Audi**  
 Planning Engineer  
 Mechanical Engineer  
 Electrical Engineer

**CLAYCO**  
 CLAYCO CONSTRUCTION COMPANY  
 2199 Innerbelt Business Center Dr.  
 St. Louis, MO 63114  
 Ph 314.429.5100 Fx 314.429.3165

**TRISTAR**  
 TRISTAR BUSINESS COMMUNITIES  
 13397 Lakewood Drive  
 St. Louis, MO 63045  
 Ph 314.291.0814

**citi mortgage**  
 Progress Point O'Fallon, MO

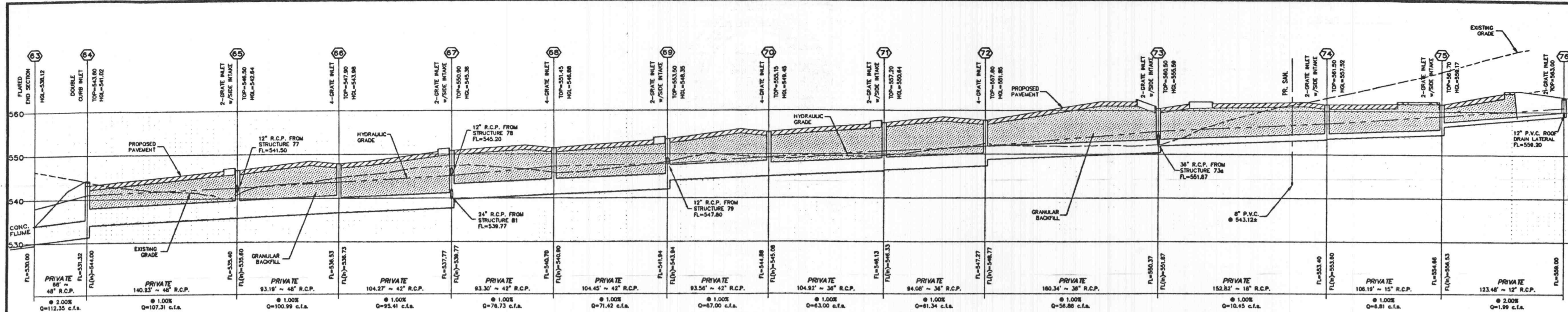
Rev. No.	Description	Date
1	PROGRESS SET 1	01-07-02
2	FOR BID/PERMIT PKG (NO INFORMATION ONLY)	01-18-02
3	ISSUE	01-31-02
4	PROGRESS SET 2	03-18-02
5	CITY COMMENTS	04-18-02
6	CITY COMMENTS	04-25-02

The Professional Engineers seal affixed to this sheet indicates that the named Engineer has prepared or directed the preparation of the material shown only on this sheet. Other drawings and documents not exhibiting this seal shall not be considered prepared by or the responsibility of the undersigned.

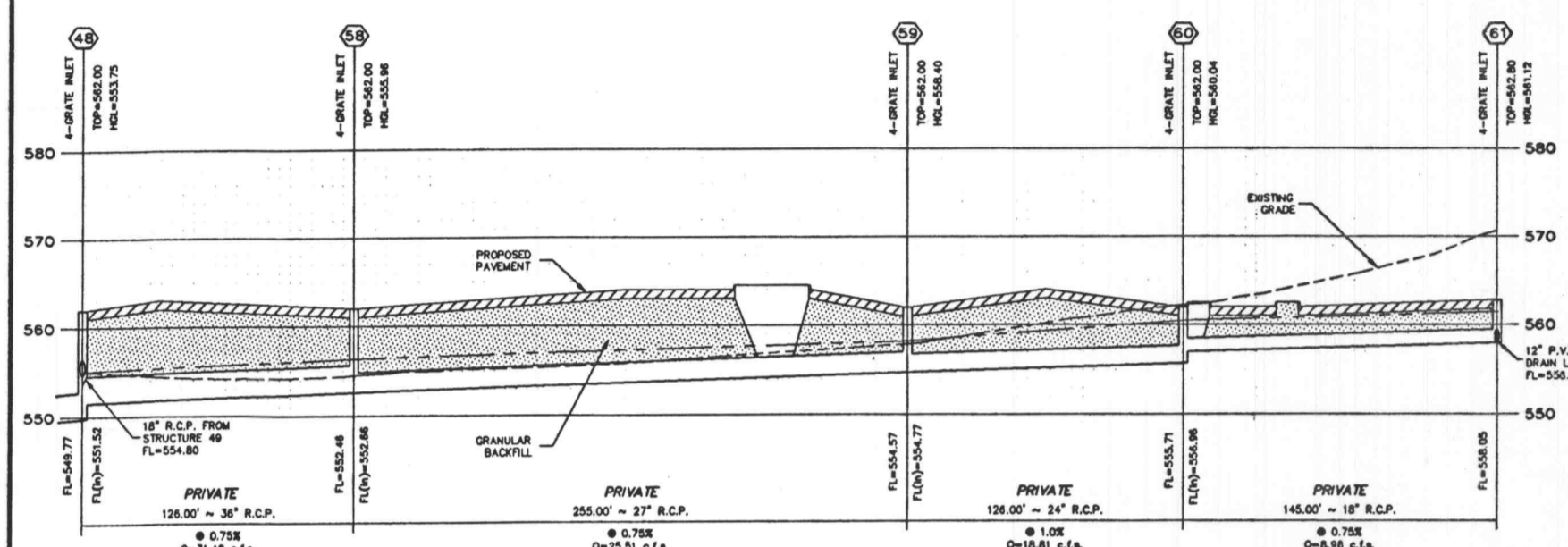
Working Title  
**STORM AND SANITARY SEWER PROFILES**

Drawing No.  
**C7**

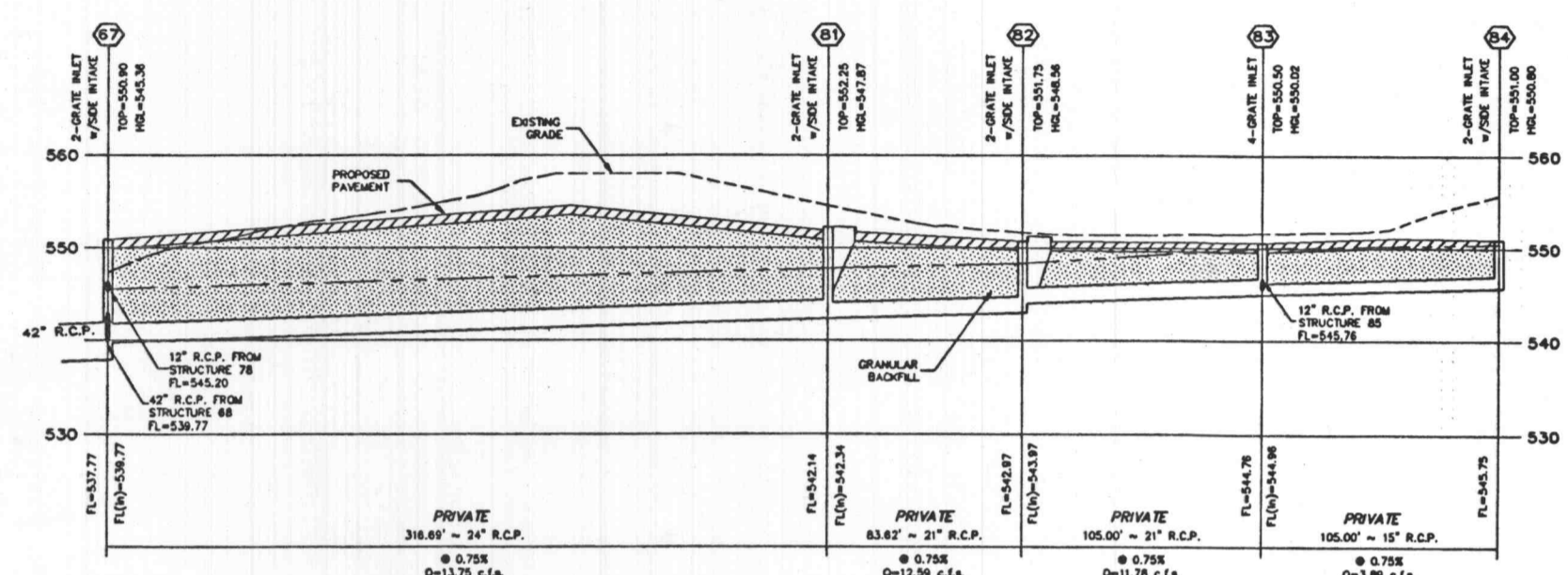
Scale	1"=40'
Drawn By	P.J.K.
Checked By	G.M.S.
Issue No.	1-091-011
Comp. No.	200-2160.1



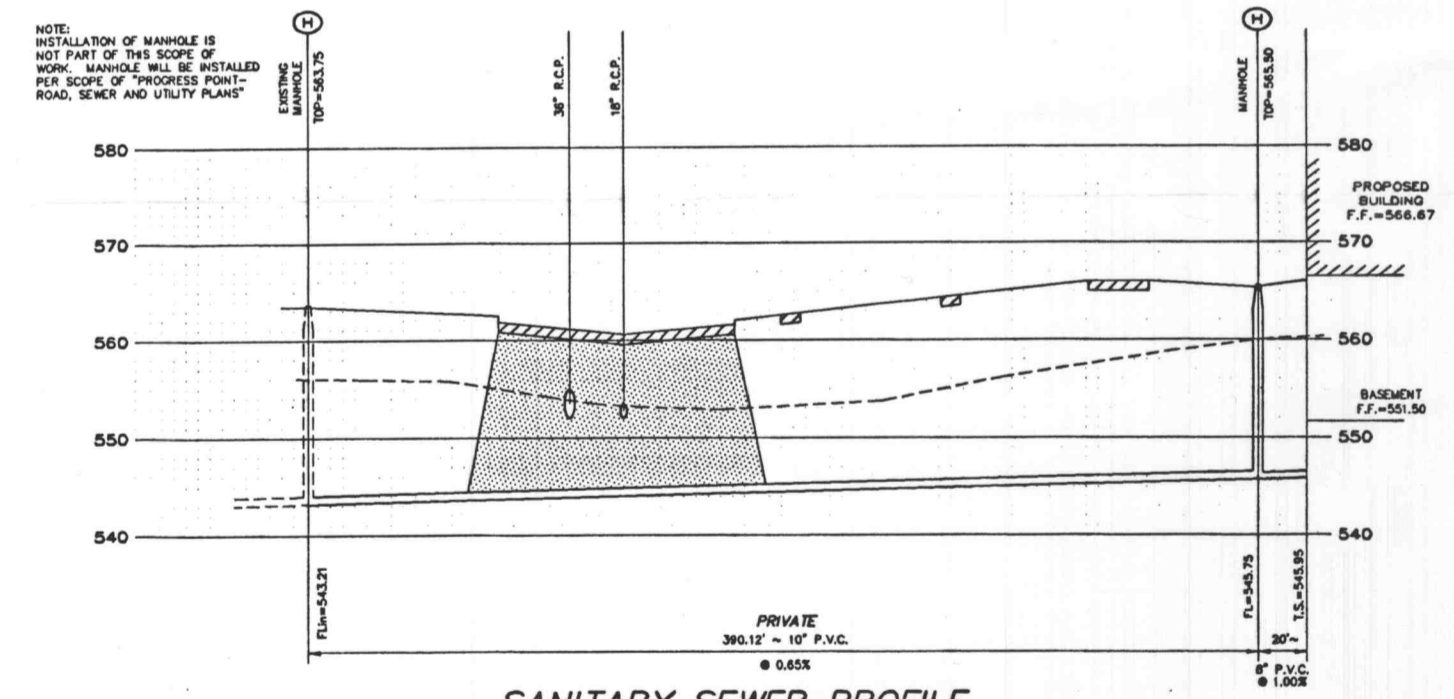
**STORM SEWER PROFILES**  
 SCALE  
 HORIZONTAL: 1"=40'  
 VERTICAL: 1"=10'



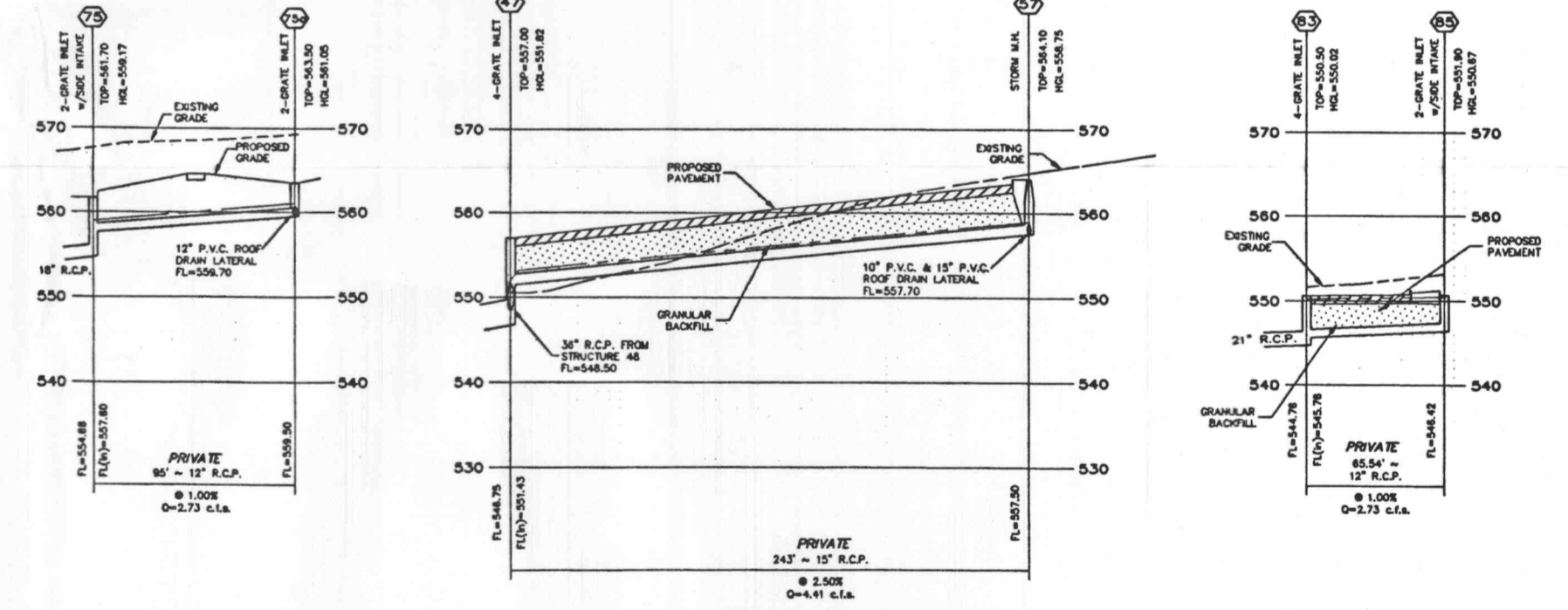
**STORM SEWER PROFILES**  
 SCALE  
 HORIZONTAL: 1"=40'  
 VERTICAL: 1"=10'



**STORM SEWER PROFILES**  
 SCALE  
 HORIZONTAL: 1"=40'  
 VERTICAL: 1"=10'



**SANITARY SEWER PROFILE**  
 SCALE  
 HORIZONTAL: 1"=40'  
 VERTICAL: 1"=10'



NOTE:  
 INSTALLATION OF MANHOLE IS NOT PART OF THIS SCOPE OF WORK. MANHOLE WILL BE INSTALLED PER SCOPE OF "PROGRESS POINT-ROAD, SEWER AND UTILITY PLANS"