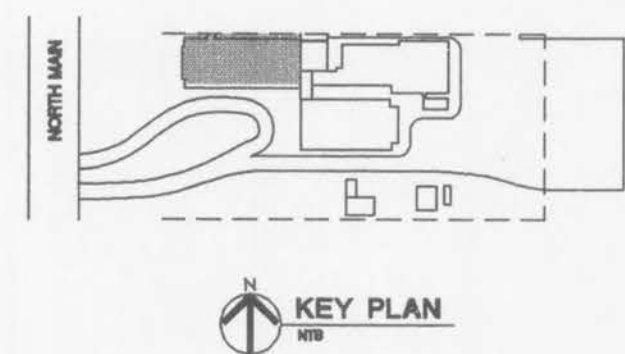


ATTIC PLAN - WEST WING
 SCALE: 1/8" = 1'-0"



DEMO KEY NOTES

- ⓐ REMOVE PARTITION, OR WALL, AND ALL ELECTRICAL CONDUIT AND WIRING BACK TO PANEL -- AS SHOWN AS DASHED LINES ON PLAN. (PROTECT ALL EXISTING TERRAZZO FLOORING TO REMAIN IN PLACE).
- ⓑ REMOVE DOOR AND FRAME.
- ⓒ REMOVE DOOR AND FRAME AND SAVE FOR REUSE.
- ⓓ REMOVE LAV, COLD WATER, HOT WATER, SANITARY PIPES AND ALL PIPING BELOW FLOOR.
- ⓔ REMOVE WINDOW FRAME, CAULK AND SILL.
- ⓕ REMOVE CASEWORK - CAP ALL PLUMBING CONNECTION WHERE APPLICABLE.
- ⓖ NOT USED
- ⓗ REMOVE WOOD WORK / CASE WORK AND SAVE FOR RE-INSTALLATION.
- ⓘ EXISTING DOORS TO REMAIN.
- ⓙ REMOVE COUNTERTOP.
- ⓚ NOT USED
- ⓛ NOT USED
- ⓜ NOT USED
- ⓝ REMOVE TOILET STALL PARTITIONS.
- ⓞ NOT USED
- ⓟ NOT USED
- ⓠ REMOVE WATER CLOSET, COLD WATER, AND SANITARY, AND PIPING BELOW FLOOR -- IF MARBLE TOILET PARTITIONS EXIST, REMOVE (INCLUDING DOORS) & SAVE FOR REUSE.
- ⓡ REMOVE CARPET AND TACK STRIP CLEAN.
- ⓢ NOT USED
- ⓣ REMOVE CAST IRON RADIATOR (OR UNIT VENTILATOR) AND ALL ASSOCIATED PIPING.
- ⓤ NOT USED
- ⓖ NOT USED
- ⓗ NOT USED
- ⓙ NOT USED
- ⓚ NOT USED
- ⓛ NOT USED
- ⓜ NOT USED
- ⓝ NOT USED
- ⓞ NOT USED
- ⓟ REMOVE STACK.
- ⓠ REMOVE PORTION OF EXISTING WALL FOR INSTALLATION OF NEW DOOR.
- ⓡ REMOVE EXISTING MARBLE CHASE WALL.
- ⓢ REMOVE EXISTING DOORS & FRAME ARCH -- CLERESTORY TO REMAIN.
- ⓣ REMOVE DRAPERY ROD.
- ⓤ REMOVE HAND RAIL(S).
- ⓖ REMOVE EXISTING A.C. UNIT. PATCH AND FILL OPENING TO MATCH ADJOINING SURFACES. REUSE SALVAGE BRICKS OR APPROVED EQUAL. TOOTH IN ALL MASONRY.



Revisions
 CONSTRUCTION ISSUE
 DECEMBER 5, 1997

Project No.	96036
Date	SEPT. 4, 1997
Designed	
Drawn	MAG3
Drawing No.	D-6