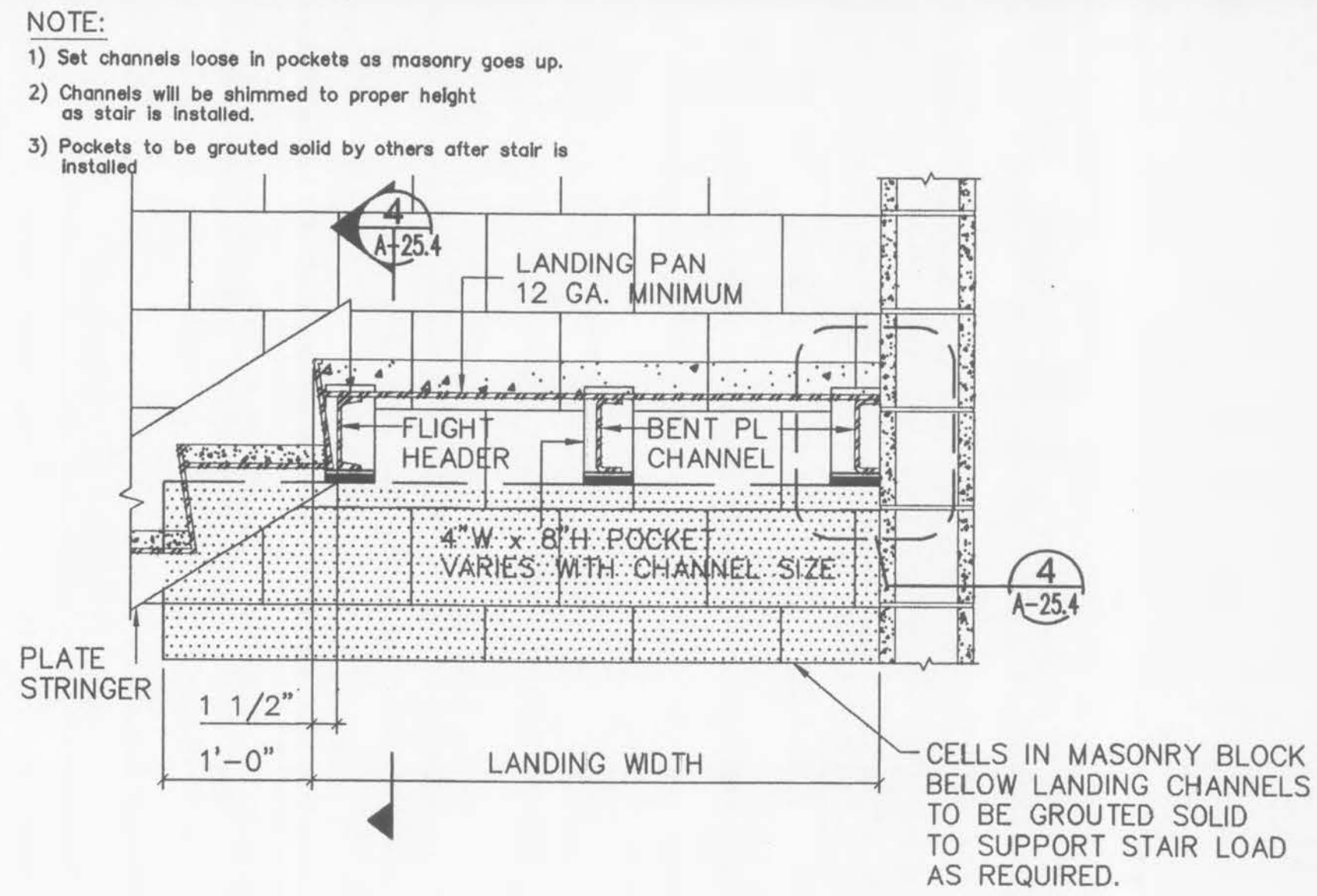
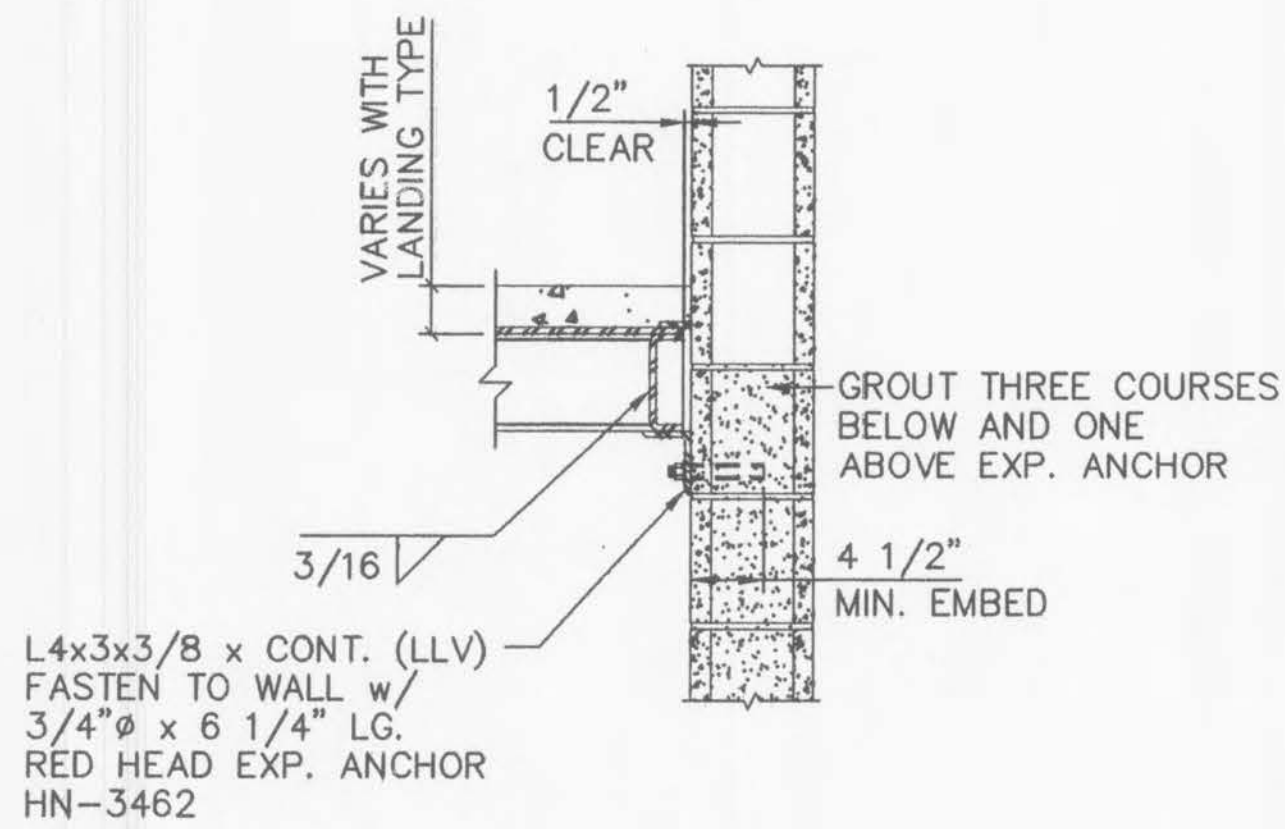


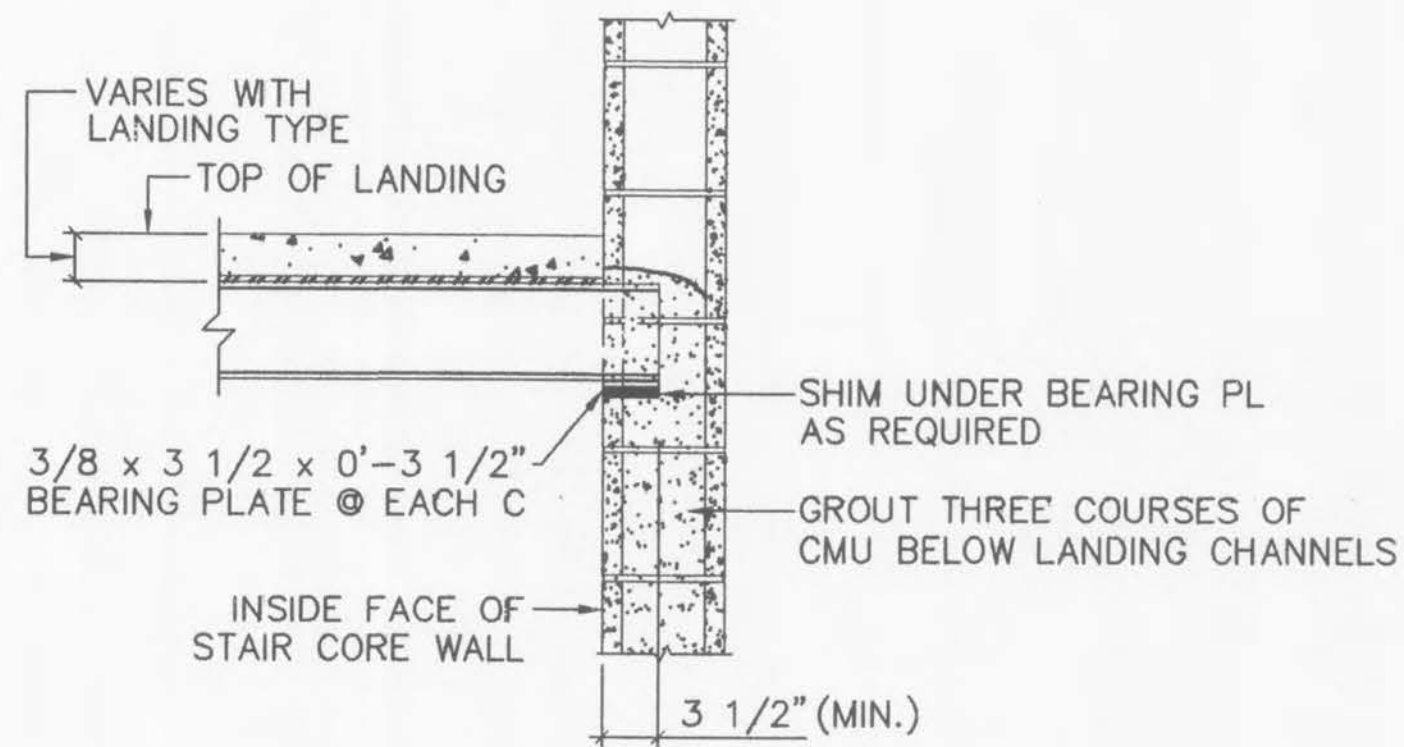
1 STAIR LANDING DETAIL (TYPE 1)
SCALE: 1" = 1'-0"



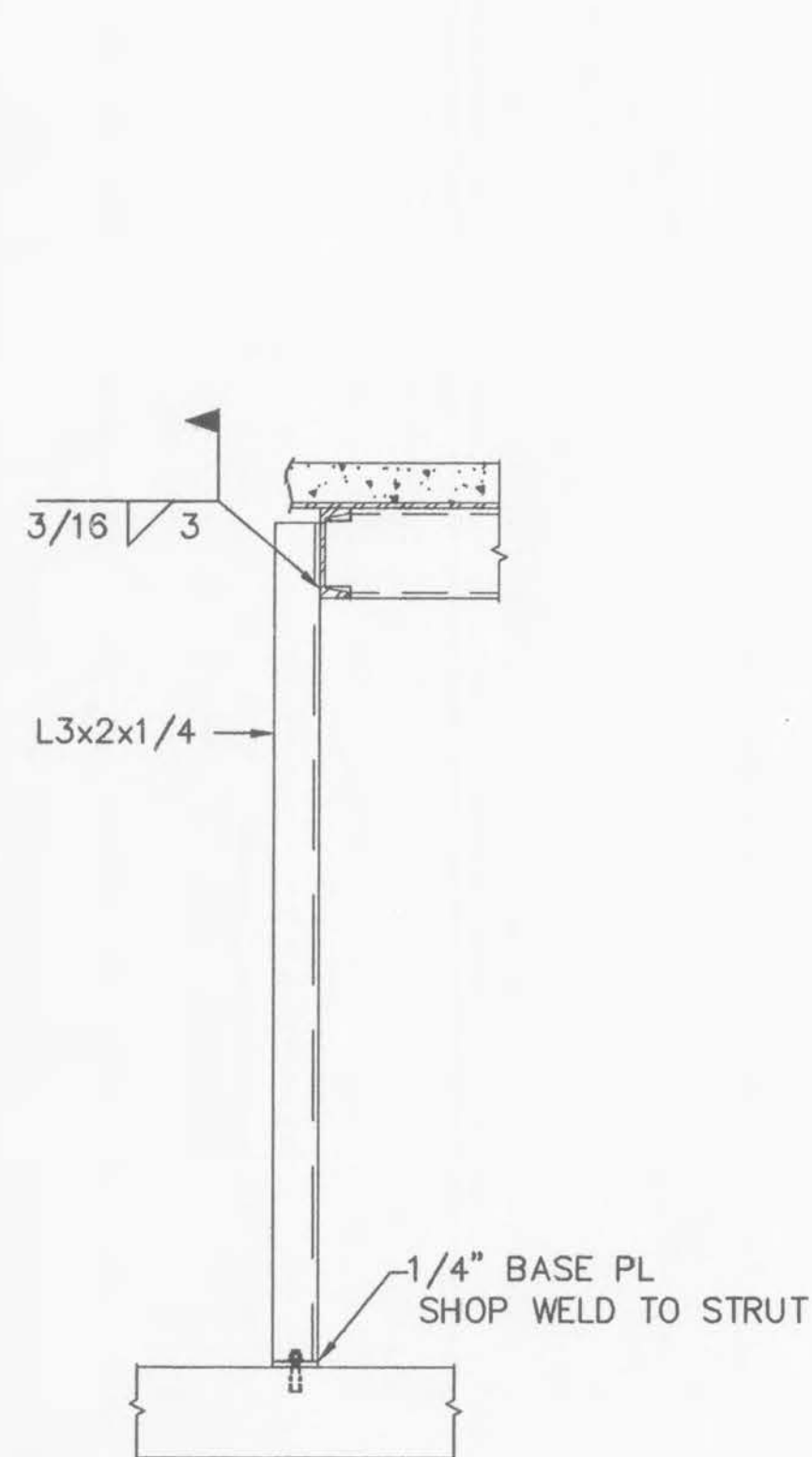
3 STAIR LANDING DETAIL (TYPE 2)
SCALE: 1" = 1'-0"



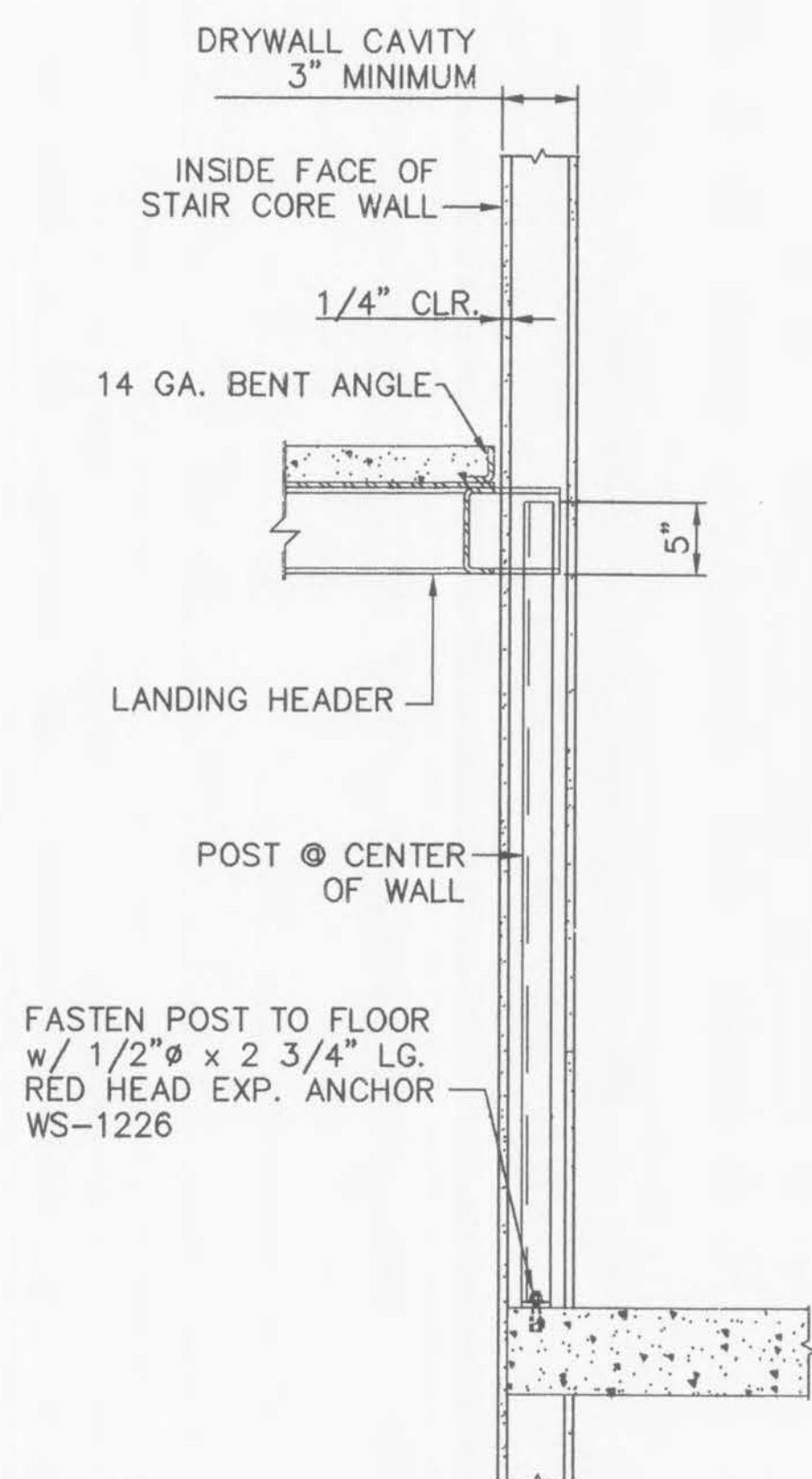
2 LANDING AT CMU WALL (TYPE 1)
SCALE: 1" = 1'-0"



4 LANDING AT CMU WALL (TYPE 2)
SCALE: 1" = 1'-0"

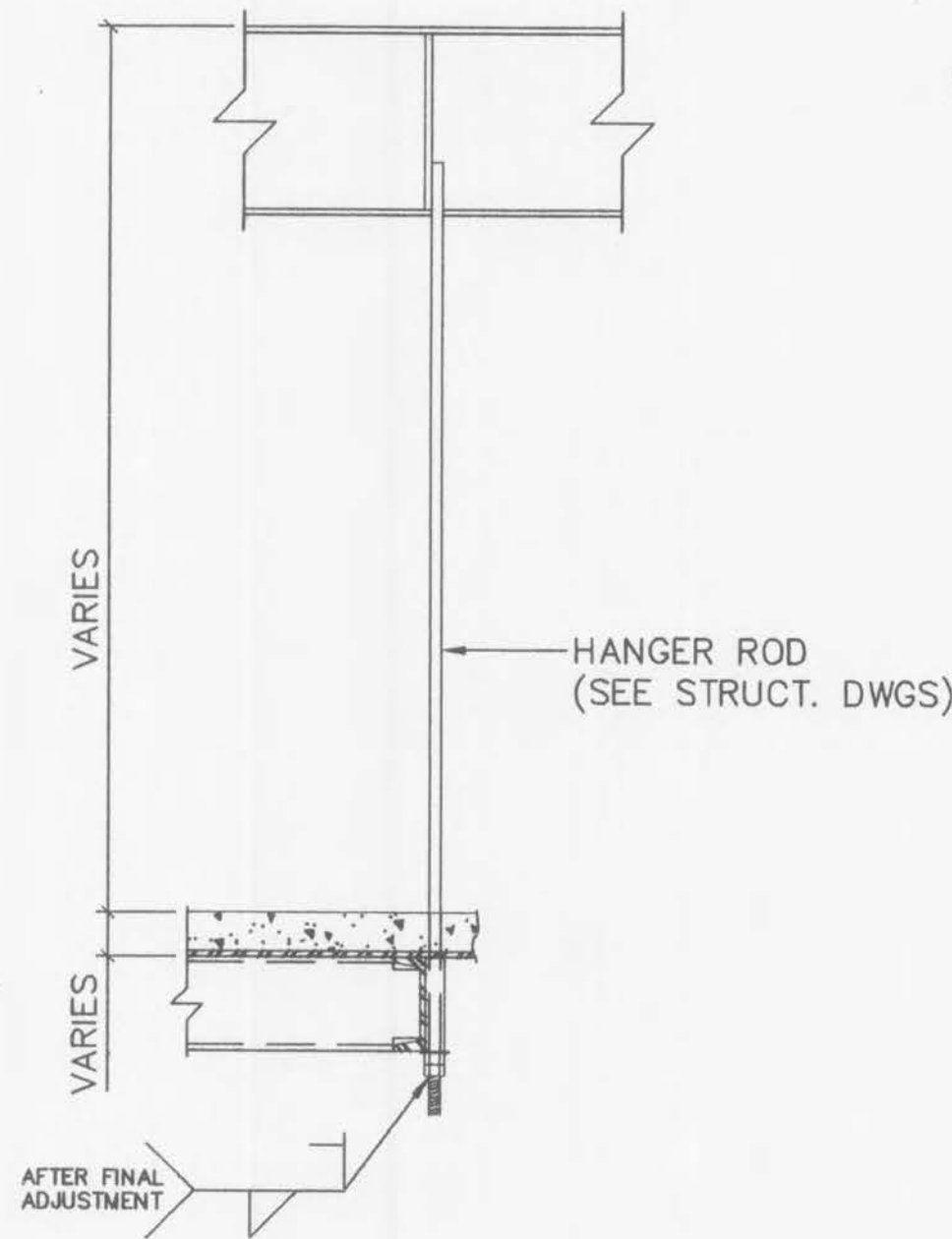


7 LANDING SUPPORT
SCALE: 1" = 1'-0"

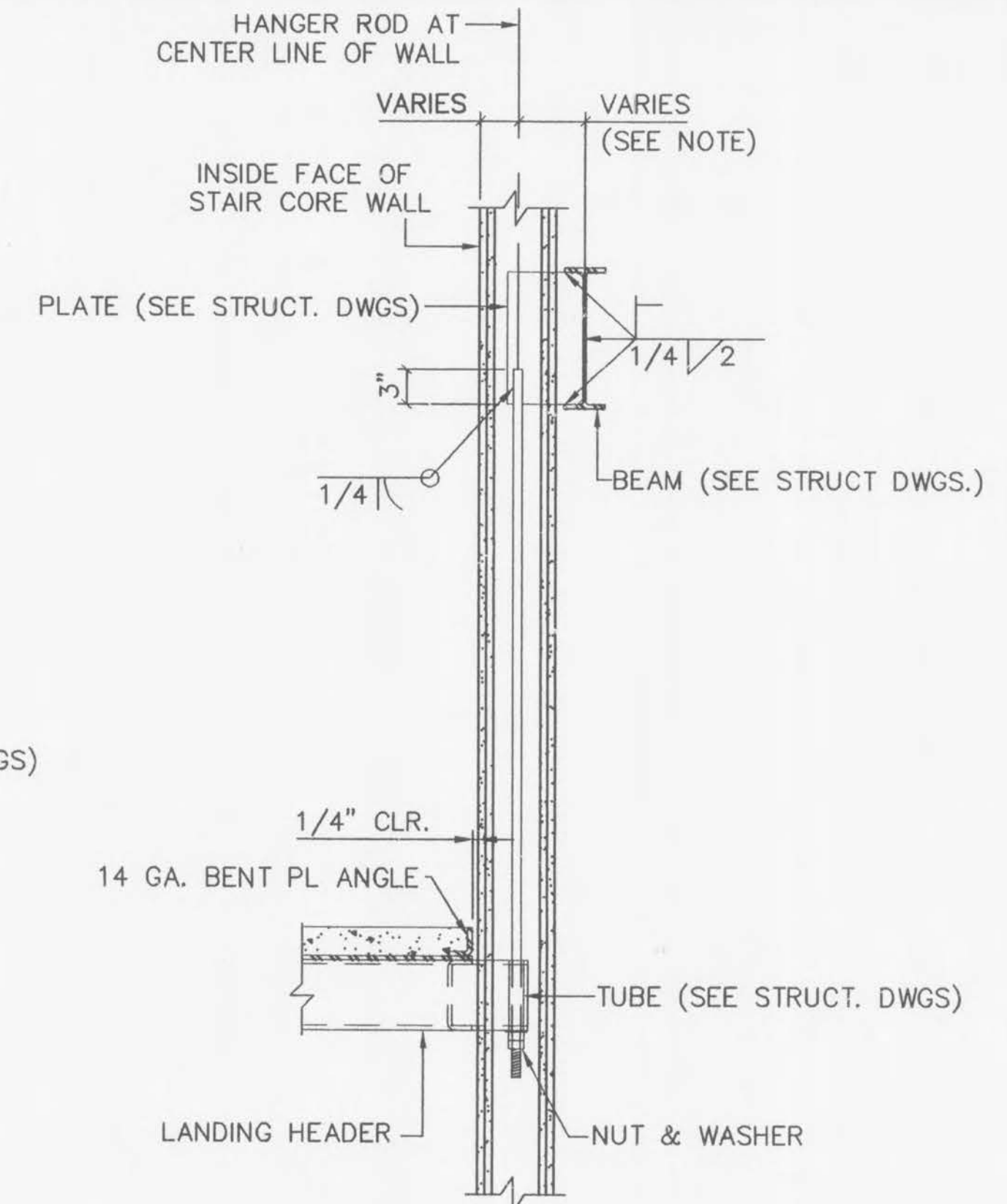


8 LANDING SUPPORT
SCALE: 1" = 1'-0"

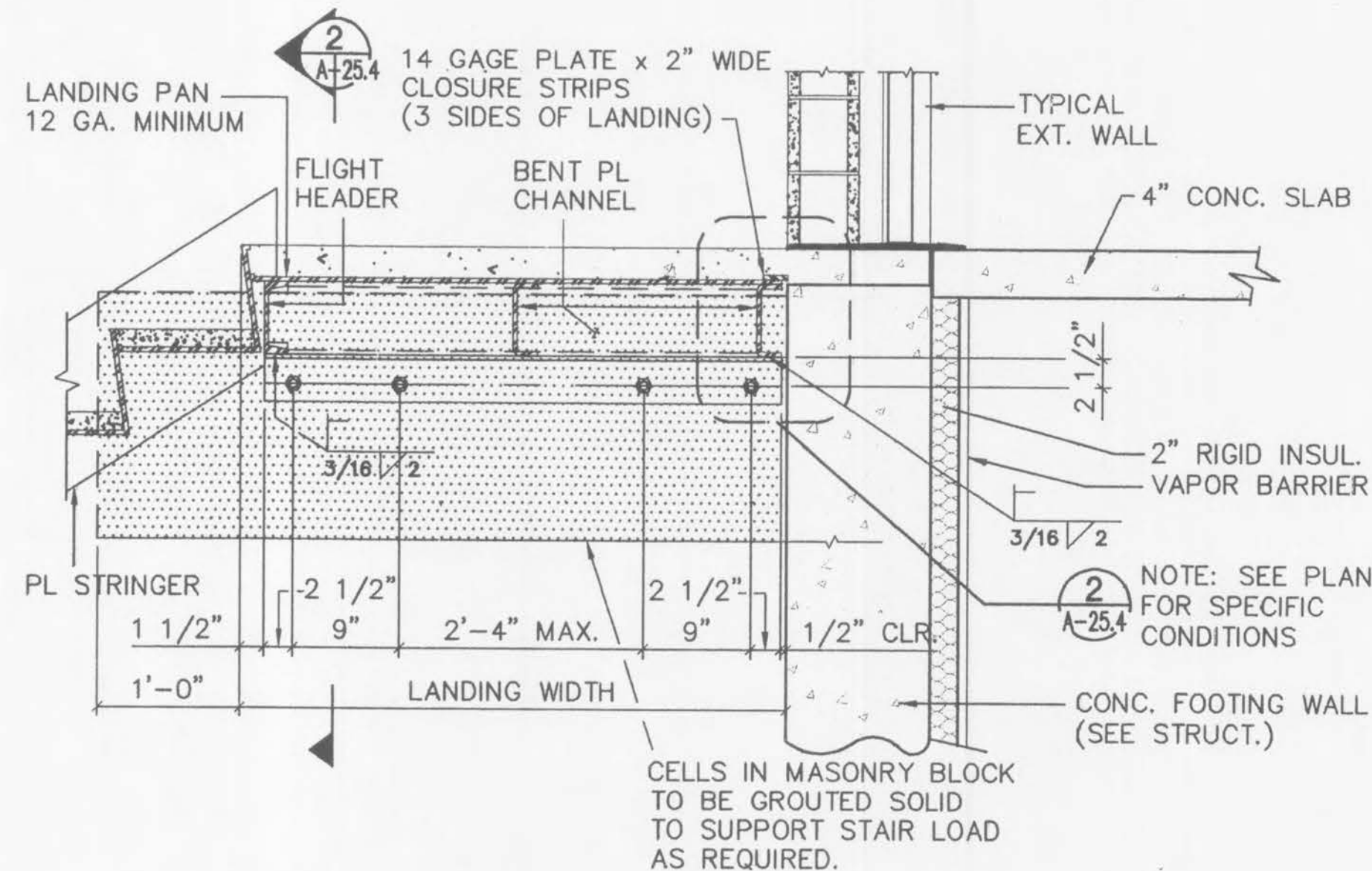
NOTE:
Any braces, stiffeners or other items required to control the rotation of the beam due to offset hanger rod connections will be the responsibility of others.



5 HANGER DETAIL AT DRYWALL PARTITION
SCALE: 1" = 1'-0"



6 ROD DETAIL WITH BEAM OFFSET
SCALE: 1" = 1'-0"



9 DETAIL AT THRESHOLD (STAIR G)
SCALE: 1" = 1'-0"