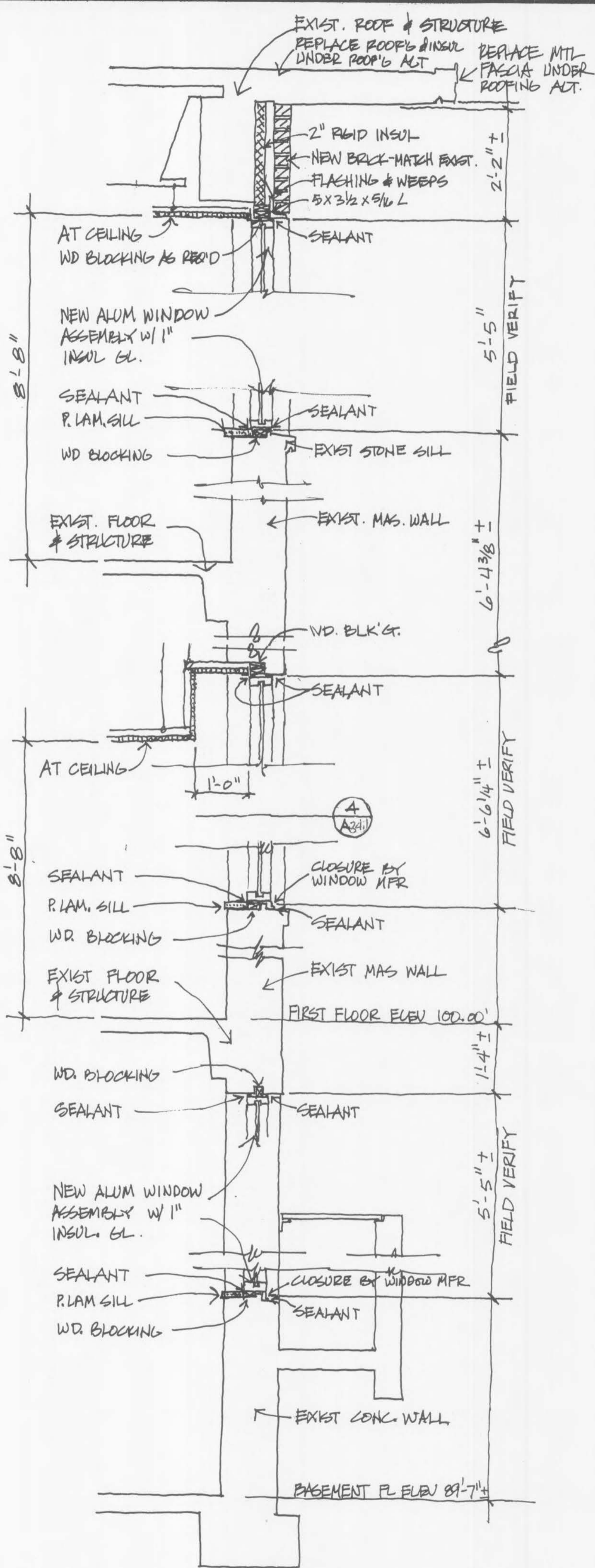
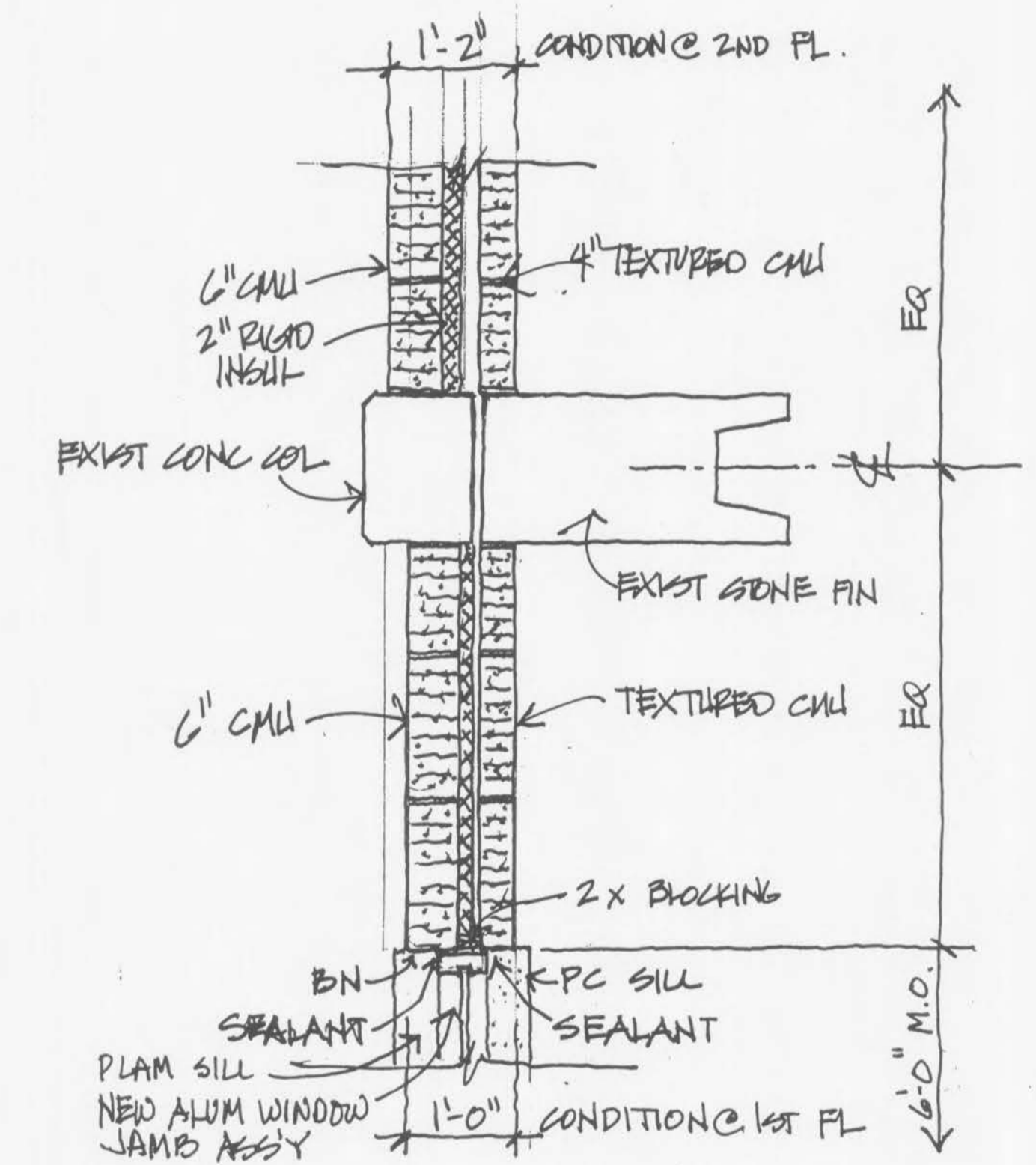


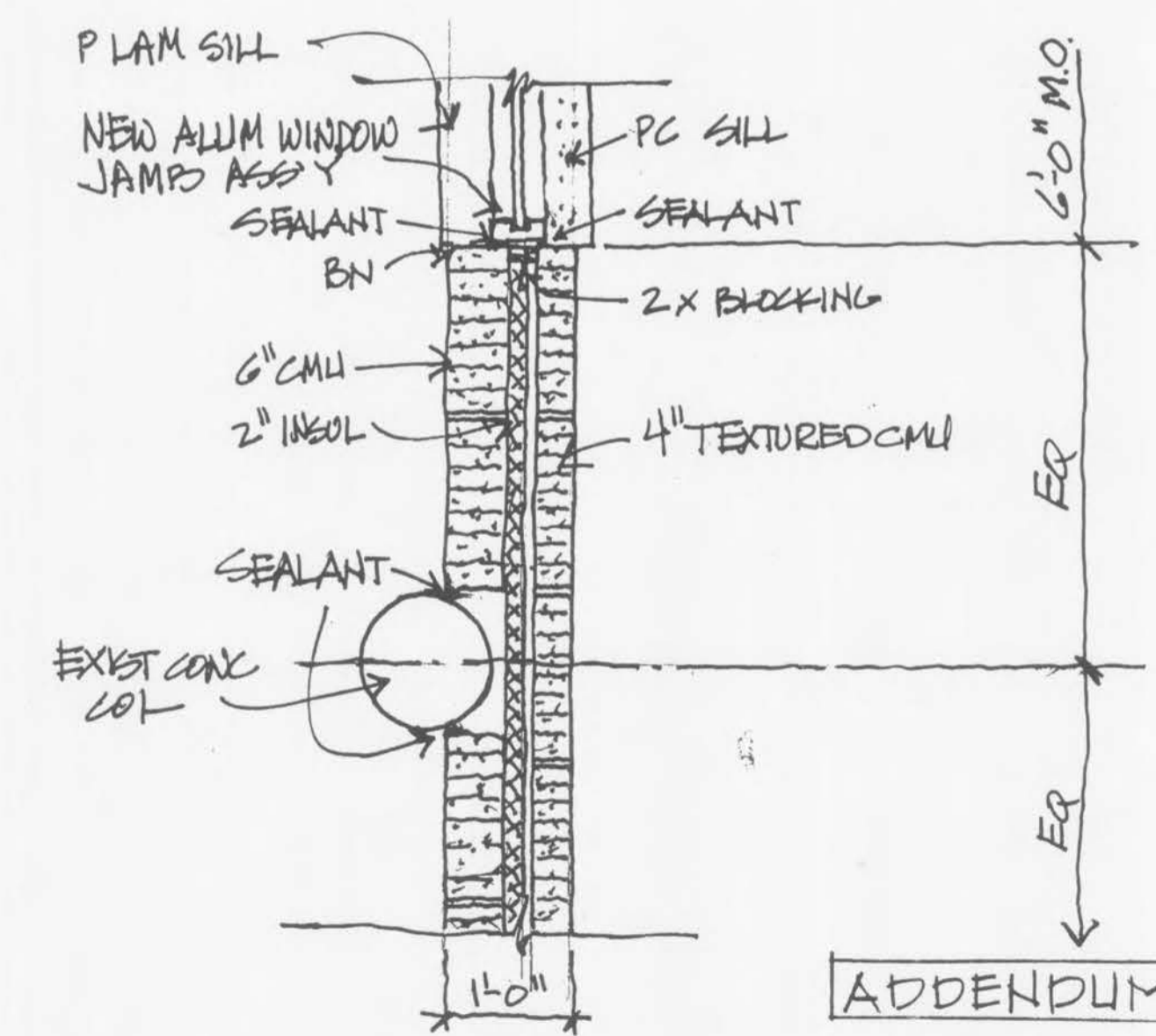
1 NORTH WALL - EAST PORTION - EAST WING  
 3/4" = 1'-0"



2 NORTH WALL - WEST PORTION - EAST WING  
 3/4" = 1'-0"



3 JAMB DTL - EAST PORTION - EAST WING  
 3/4" = 1'-0"



4 JAMB DTL - WEST PORTION - EAST WING  
 3/4" = 1'-0"

ADDENDUM ISSUE