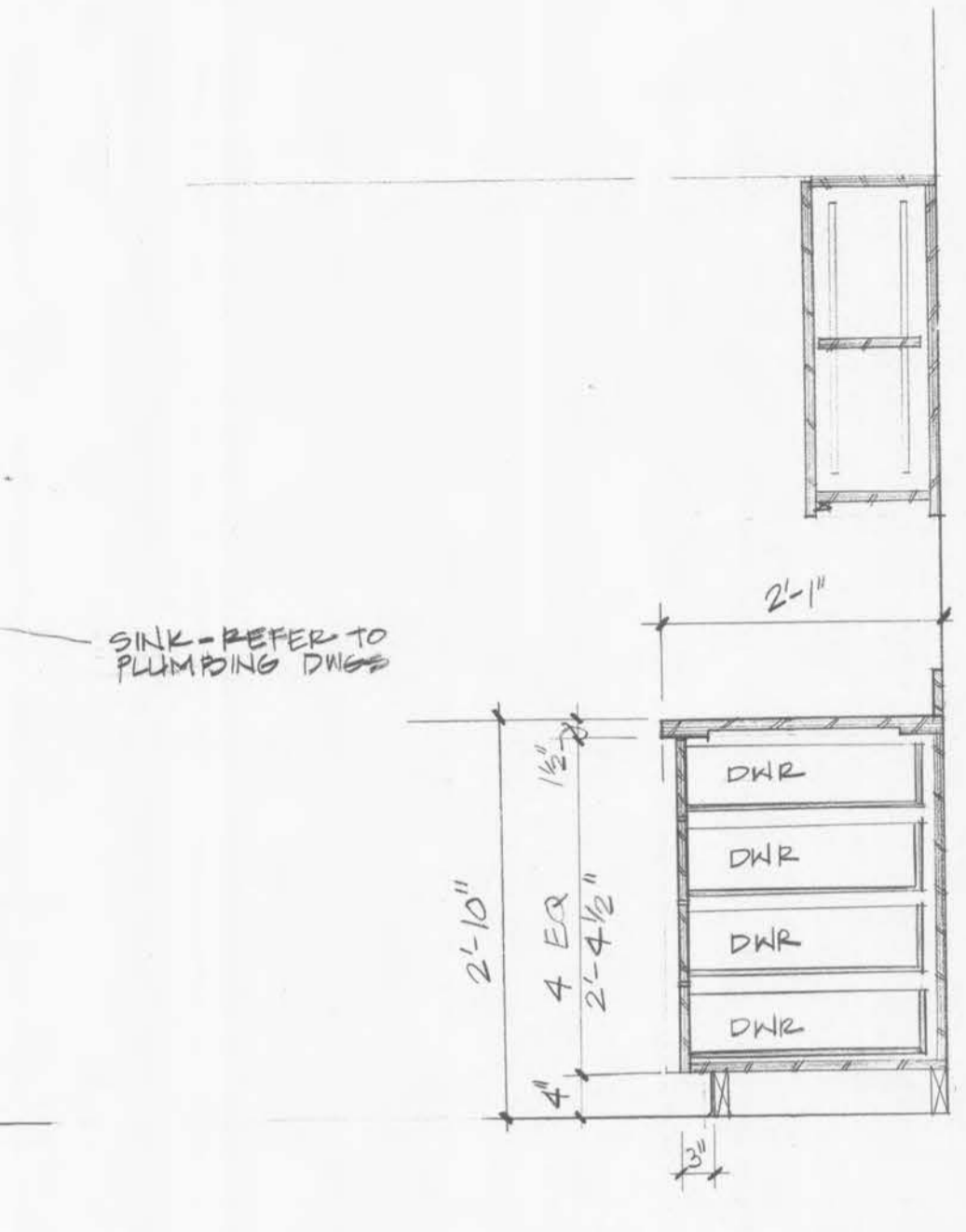
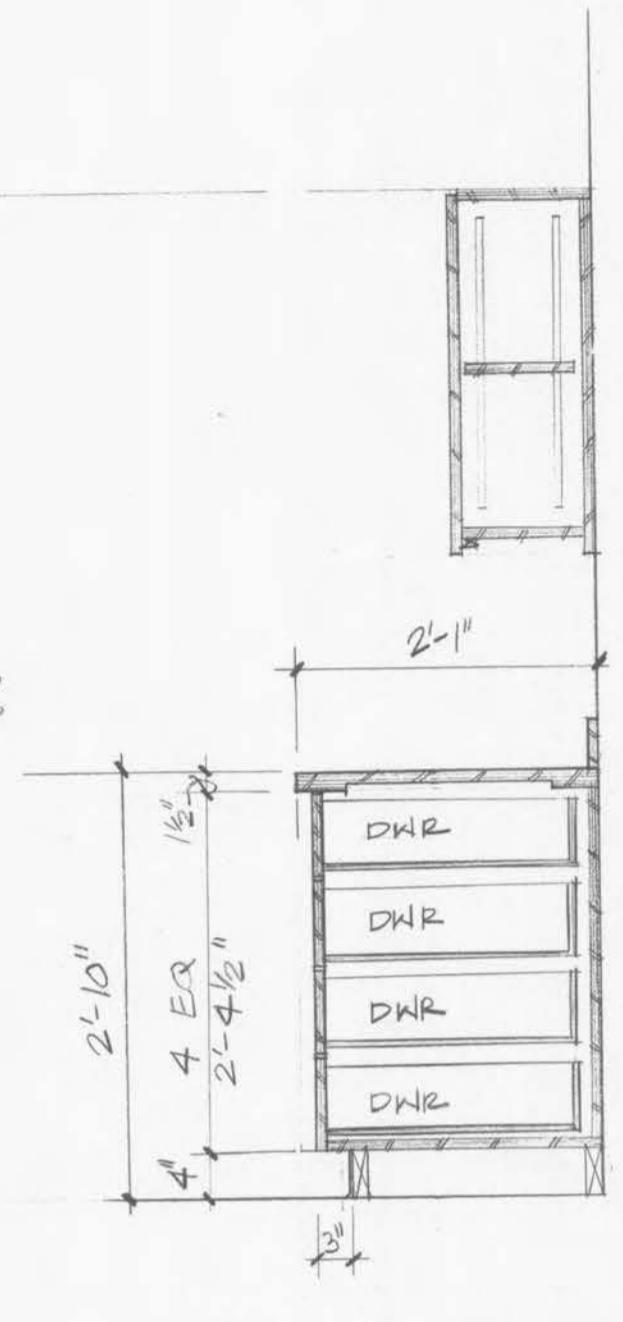


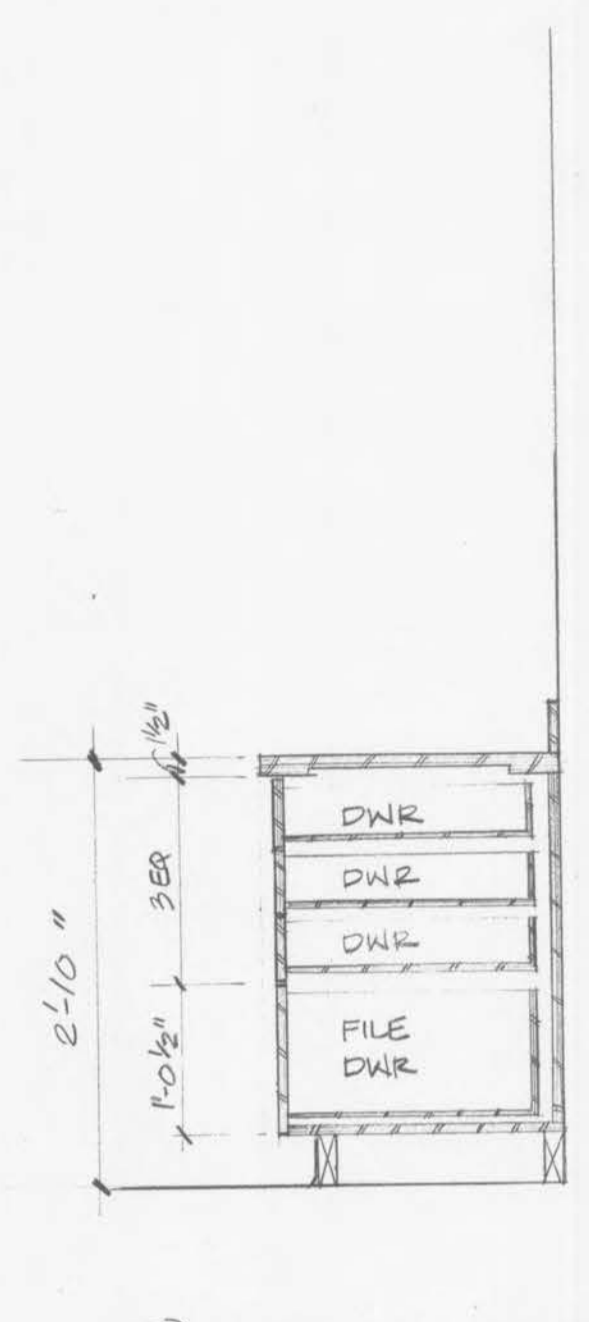
1 BASE CABINET W/ DWR
3/4" = 1'-0"



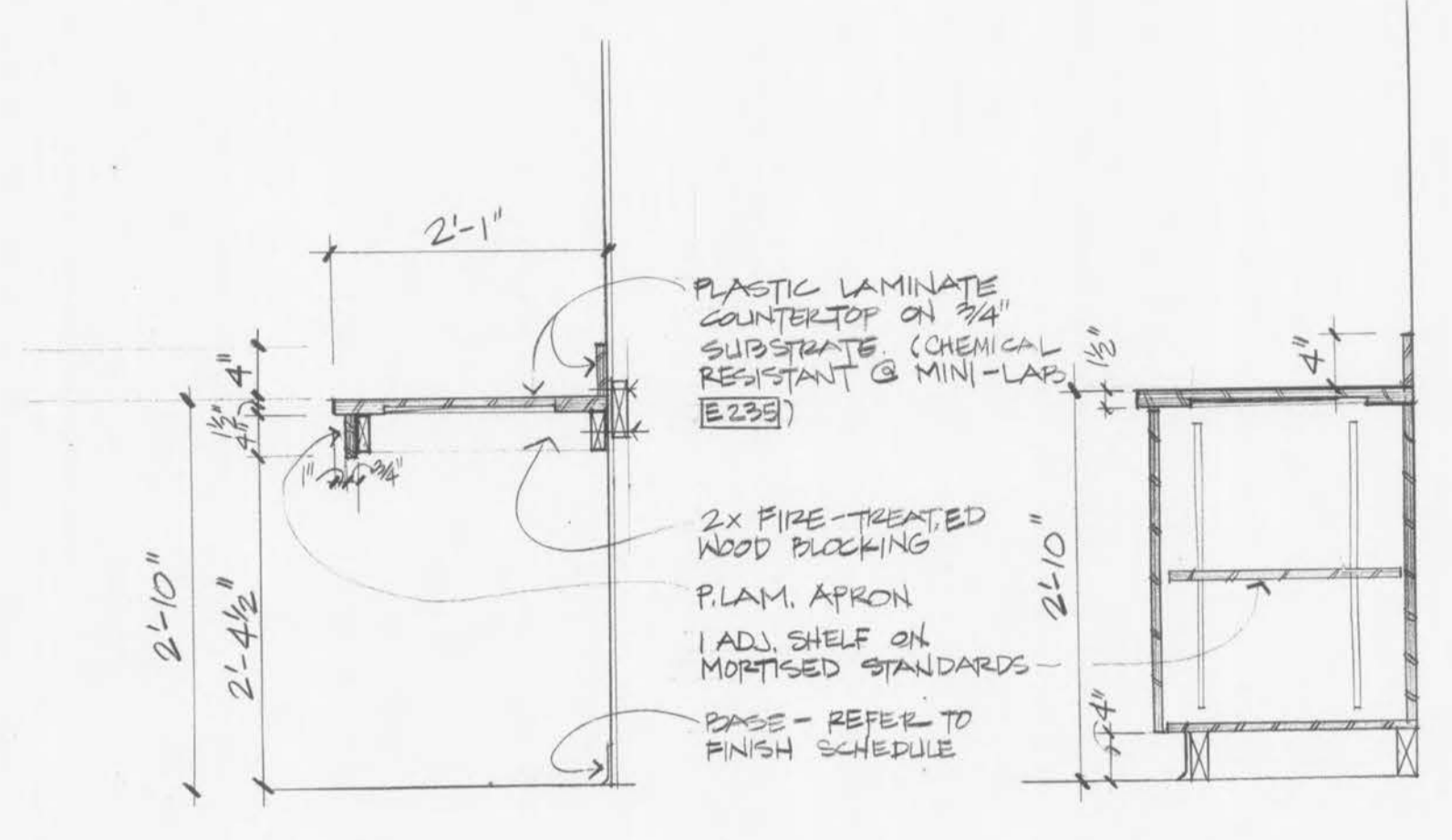
2 SINK BASE
3/4" = 1'-0"



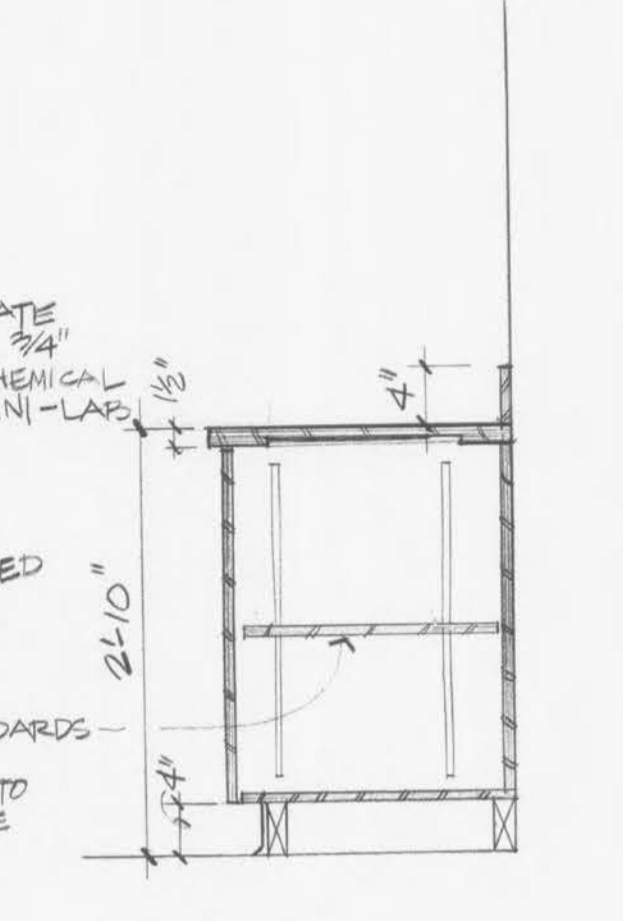
3 4 DRAWER BASE
3/4" = 1'-0"



4 DRAWER BASE
3/4" = 1'-0"

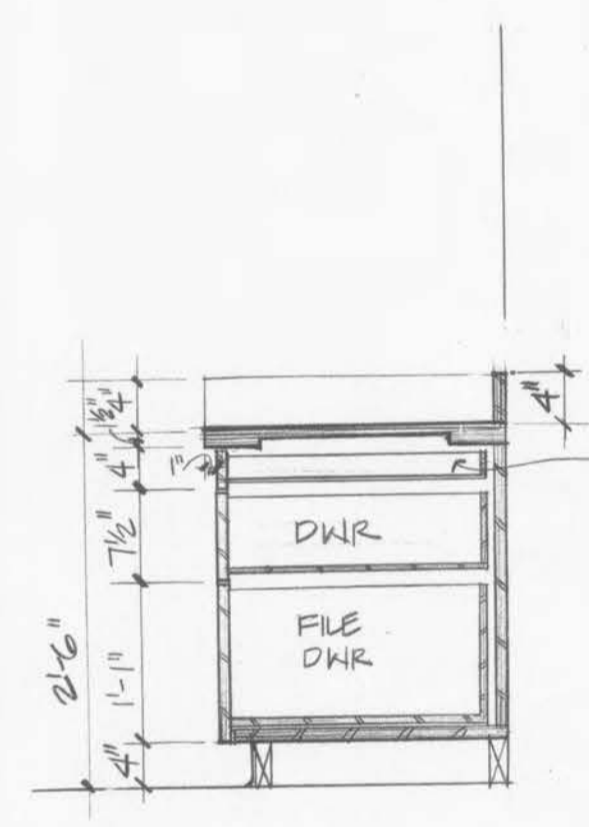


5 KNEE SPACE
3/4" = 1'-0"

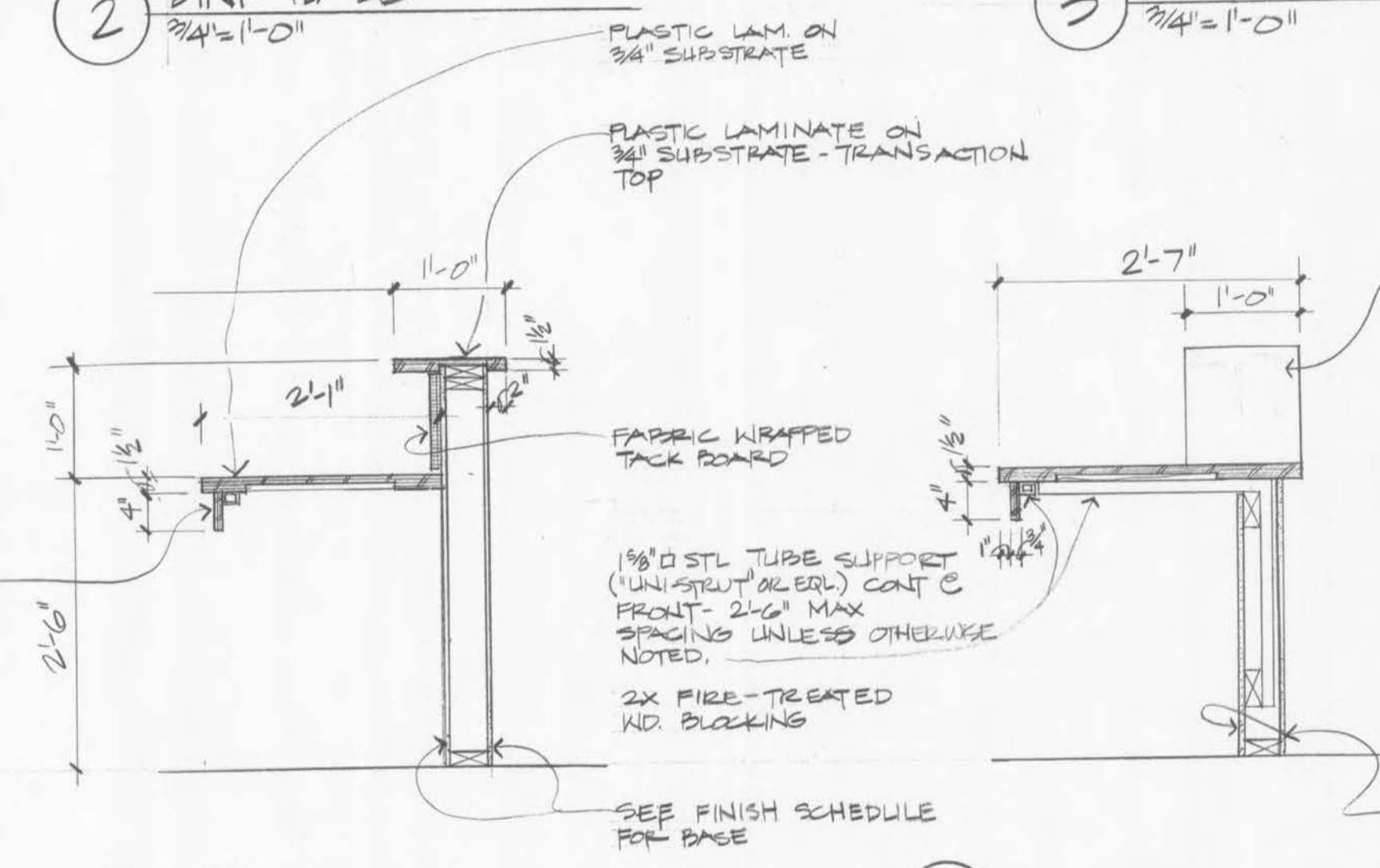


6 BASE CABINET
3/4" = 1'-0"

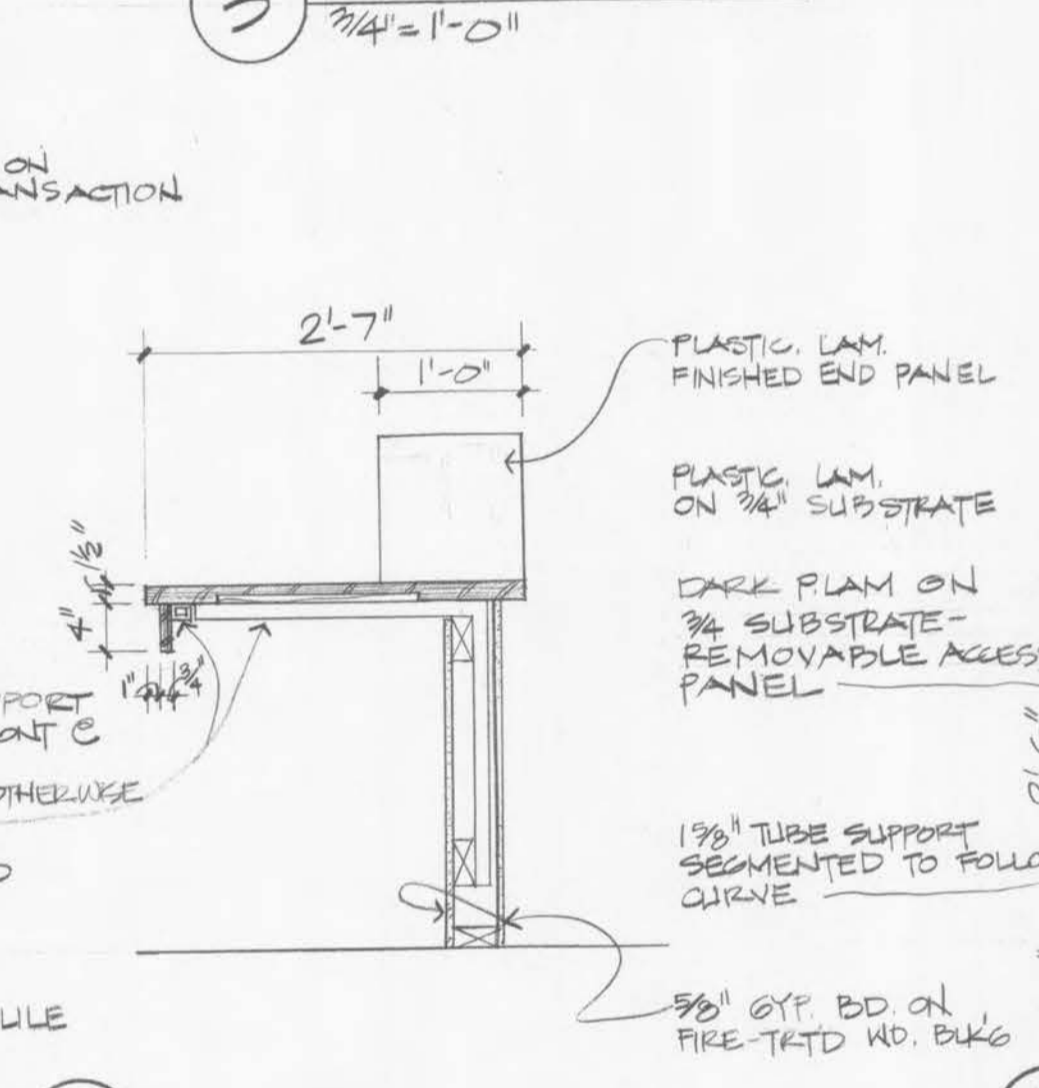
NOTE: 1. PLASTIC LAMINATE ON ALL EXPOSED SURFACES
2. WALL CABINETS OVER 2'-6" H ARE TO HAVE 2 ADJ. SHELVES
3. REFER TO INTERIOR ELEVATIONS FOR WALL & BASE CABINET HEIGHTS



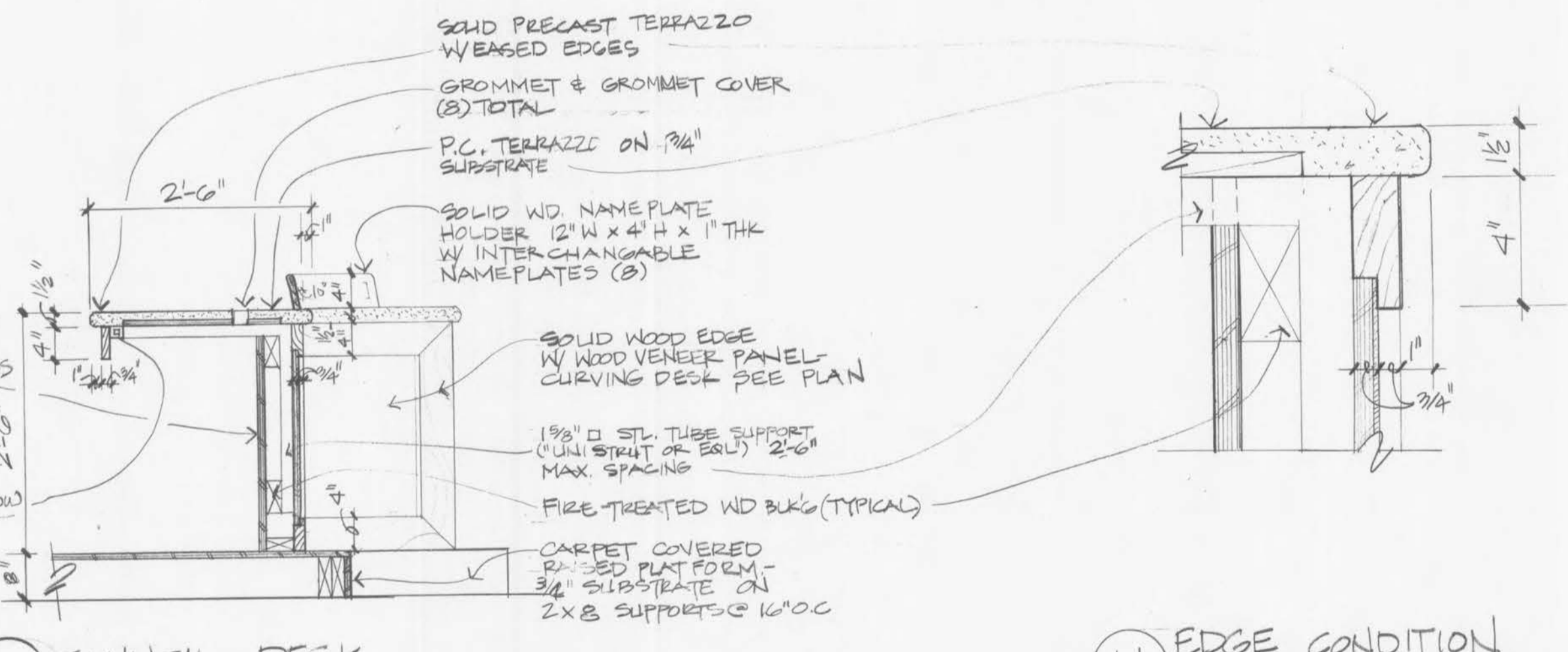
7 DWR BASE
3/4" = 1'-0"



8 KNEE SPACE
3/4" = 1'-0"

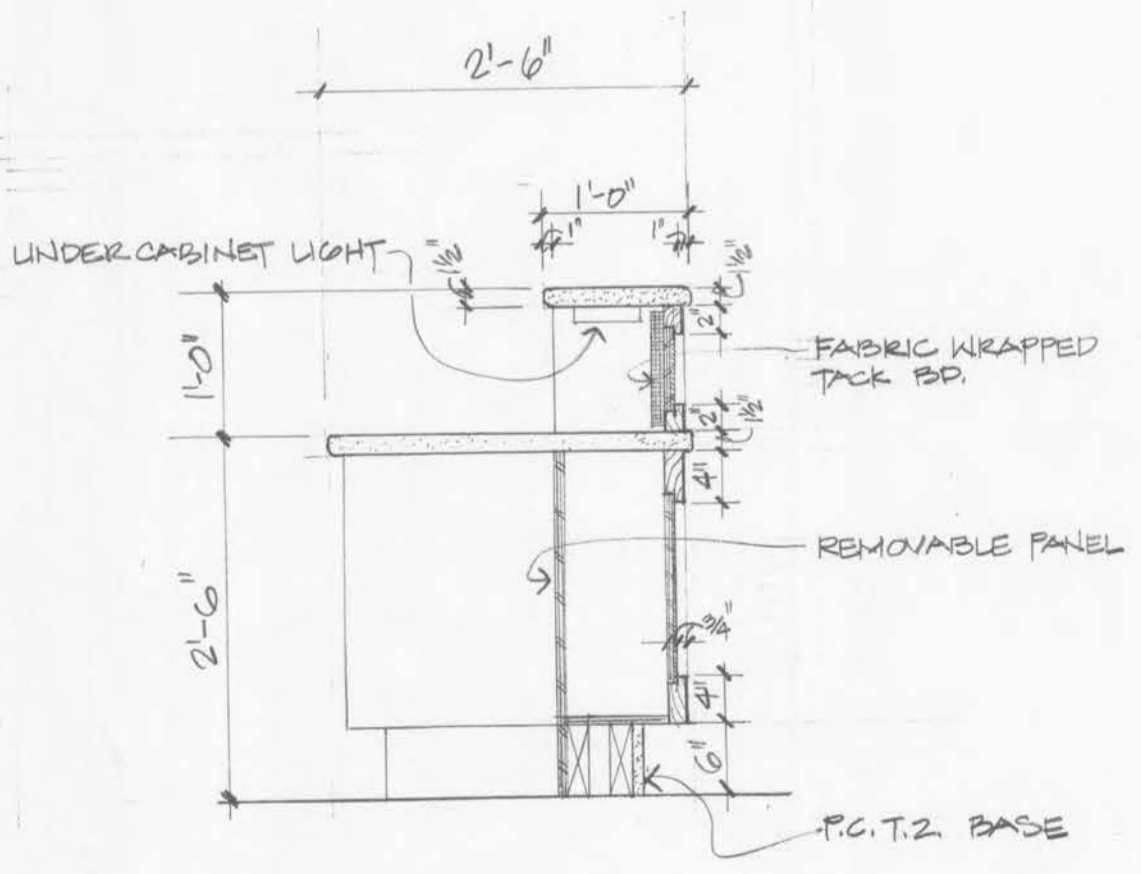


9
3/4" = 1'-0"

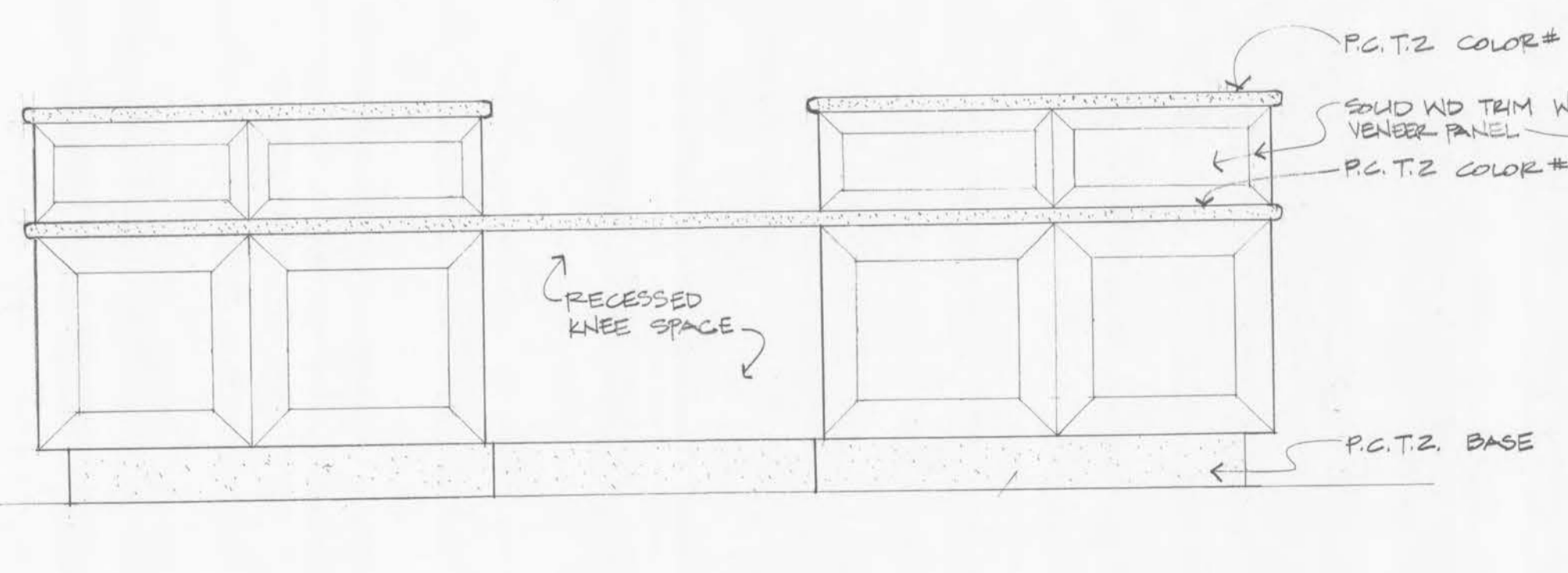


10 COUNCIL DESK
3/4" = 1'-0"

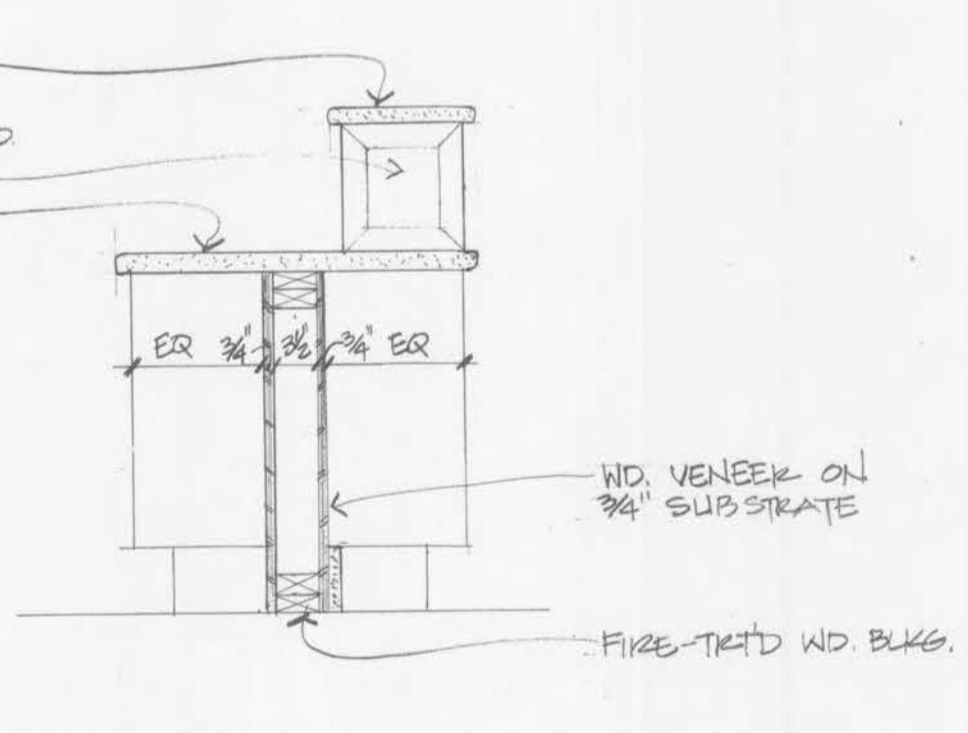
11 EDGE CONDITION
3/4" = 1'-0"



12 RECPT DESK
3/4" = 1'-0"



13 RECEPTION DESK - WEST LOBBY
3/4" = 1'-0"



14 KNEE SPACE OF RECPT DESK
3/4" = 1'-0"