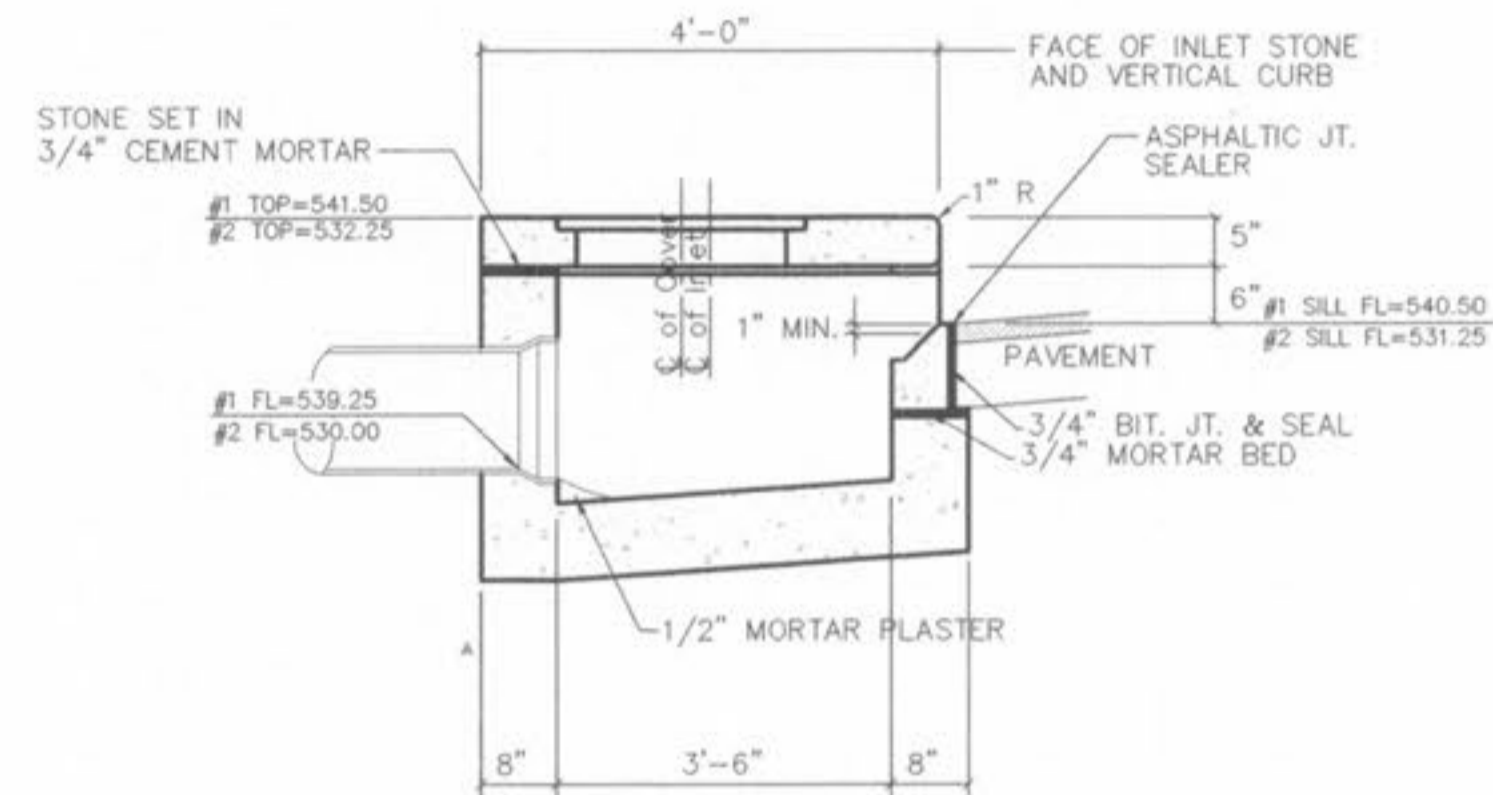
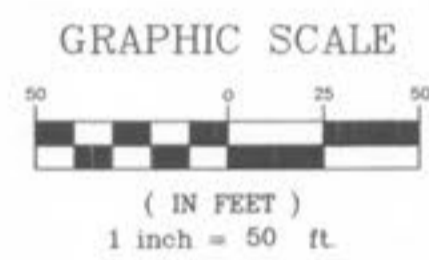


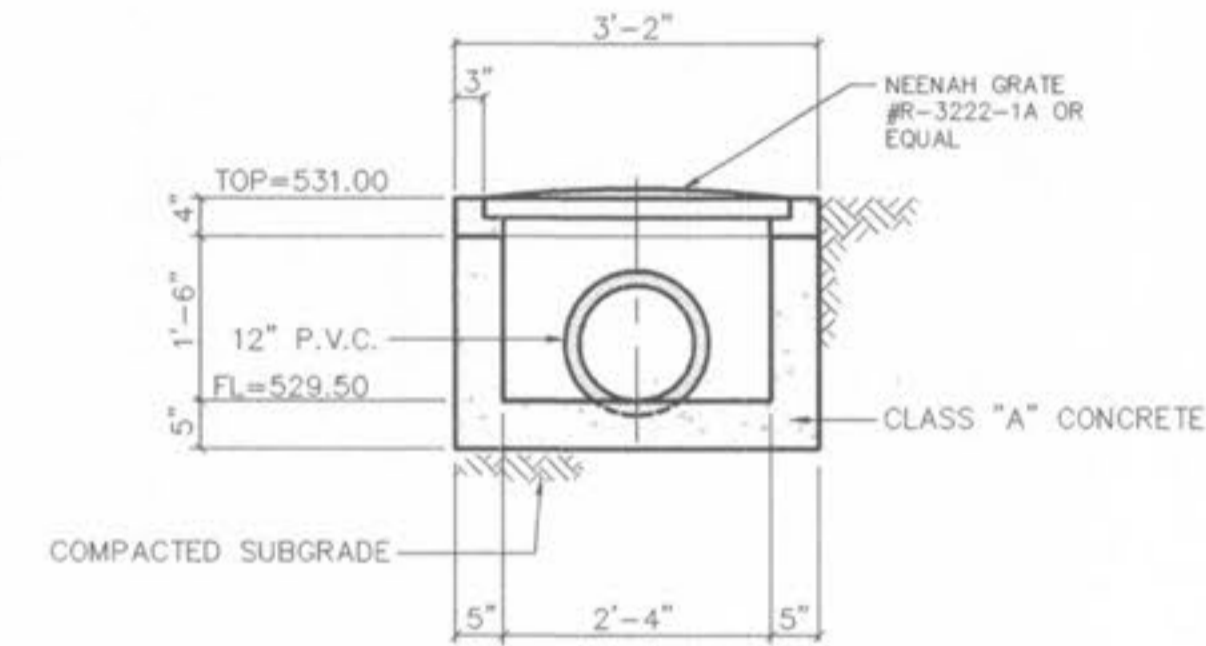
A TRACT OF LAND BEING PART OF
SECTION 21, TOWNSHIP 47 NORTH, RANGE 3 EAST,
OF THE FIFTH PRINCIPAL MERIDIAN,
ST. CHARLES COUNTY, MISSOURI

LEGEND	
(R)	DENOTES RECORD DIMENSION
(S)	DENOTES SURVEY DIMENSION
	= SIGN
	= GAS VALVE
	= WATER SHUT OFF VALVE
	= FIRE HYDRANT
	= TELEPHONE BOX
	= WATER METER
	= UTILITY POLE
	= GUY WIRE
OW	= OVERHEAD WIRES
-X-	= FENCE
RCP	= REINFORCED CONCRETE PIPE
PVC	= POLY VINYL CHLORIDE (PLASTIC)
	= CONCRETE
	= REFERENCE POINT
	= MATCH EXISTING

MAIN STREET STA: 1+66
HWY "M" STA: 48+34



CATCH BASIN DETAIL
SCALE: 1" = 20"
NOTE: VERIFY DIMENSIONS WITH MANUFACTURER.

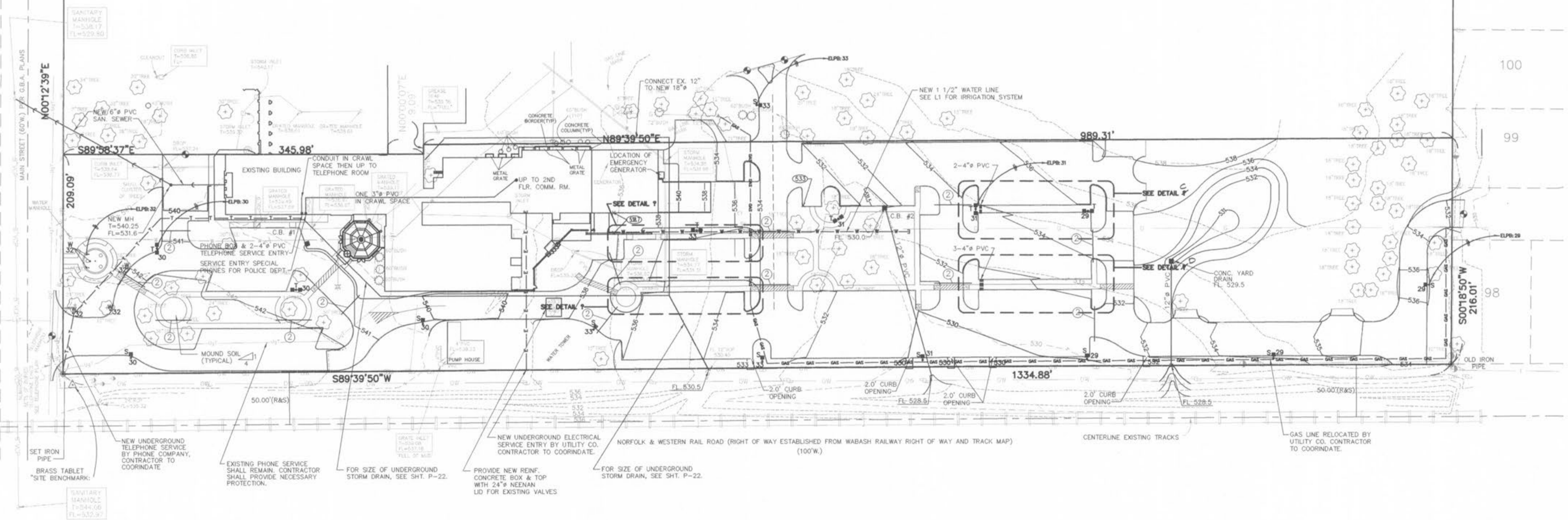


YARD INLET DETAIL
SCALE: 1" = 20"
NOTE: VERIFY DIMENSIONS WITH MANUFACTURER.

1. THE UNDERGROUND UTILITIES SHOWN HEREON WERE PLOTTED FROM BASE MAPS SUPPLIED TO BAX FROM THE RESPECTIVE UTILITY COMPANIES SERVING THIS SITE AND SHOULD BE VERIFIED BEFORE ANY DESIGN OR CONSTRUCTION BEGINS.
2. 4" PVC SLEEVE UNDER PAVEMENT FOR IRRIGATION MAINS.
3. CONDUCTORS SHALL BE #10 IN 3/4" CONDUIT, UNLESS NOTED OTHERWISE.

KEYED NOTES:

- 1 PROVIDE TIME CLOCK AND CONNECT ALL EXTERIOR LIGHTS TO THIS TIME CLOCK.



107
106
105
104
103
102
101
100
99
98

CRD Campbell, Inc.
Engineers Architects Planners
One Campbell Plaza 59th & Arsenal St. Louis MO 63139 314/781-2004

City of O'Fallon
138 South Main Street
O'Fallon, Missouri 63366
NEW CITY HALL COMPLEX

GRADING DRAINAGE AND UTILITY PLAN
CONSTRUCTION DOCUMENTS

Revisions
CONSTRUCTION ISSUE
DECEMBER 5, 1997
CHANGE ORDER NO. #1
- JAN 27, 1998

Project No. 96036
Date SEPT. 4, 1997
Designed
Drawn
Drawing No. **C-2**

CONSTRUCTION DOCUMENTS