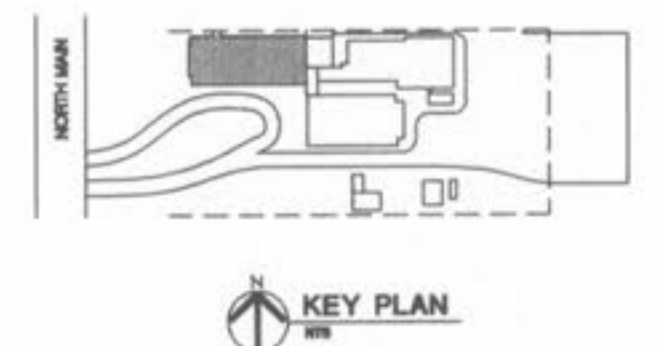


FIRST FLOOR PLAN - WEST WING
SCALE: 1/8" = 1'-0"



DEMO KEY NOTES

- A REMOVE PARTITION, OR WALL, AND ALL ELECTRICAL CONDUIT AND WIRING BACK TO PANEL -- AS SHOWN AS DASHED LINES ON PLAN. (PROTECT ALL EXISTING TERRAZZO FLOORING TO REMAIN IN PLACE).
- B REMOVE DOOR AND FRAME.
- C REMOVE DOOR AND FRAME AND SAVE FOR REUSE.
- D REMOVE LAV, COLD WATER, HOT WATER, SANITARY PIPES AND ALL PIPING BELOW FLOOR.
- E REMOVE WINDOW FRAME, CAULK AND SILL.
- F REMOVE CASEWORK - CAP ALL PLUMBING CONNECTION WHERE APPLICABLE.
- G NOT USED
- H REMOVE WOOD WORK / CASE WORK AND SAVE FOR RE-INSTALLATION.
- I EXISTING DOORS TO REMAIN.
- J REMOVE COUNTERTOP.
- K NOT USED
- L NOT USED
- M NOT USED
- N REMOVE TOILET STALL PARTITIONS.
- O NOT USED
- P NOT USED
- Q REMOVE WATER CLOSET, COLD WATER, AND SANITARY, AND PIPING BELOW FLOOR -- IF MARBLE TOILET PARTITIONS EXIST, REMOVE (INCLUDING DOORS) & SAVE FOR REUSE.

FOR REUSE.

- R REMOVE CARPET AND TACK STRIP CLEAN.
- S NOT USED
- T REMOVE CAST IRON RADIATOR (OR UNIT VENTILATOR) AND ALL ASSOCIATED PIPING.
- U NOT USED
- V NOT USED
- W NOT USED
- X NOT USED
- Y NOT USED
- Z NOT USED
- AA NOT USED
- AB REMOVE STACK.
- AC REMOVE PORTION OF EXISTING WALL FOR INSTALLATION OF NEW DOOR.
- AD REMOVE EXISTING MARBLE CHASE WALL.
- AE REMOVE EXISTING DOORS & FRAME ARCH -- CLERESTORY TO REMAIN.
- AF REMOVE DRAPERY ROD.
- AG REMOVE HAND RAIL(S).
- AH REMOVE EXISTING A.C. UNIT, PATCH AND FILL OPENING TO MATCH ADJOINING SURFACES. REUSE SALVAGE BRICKS OR APPROVED EQUAL. TOOTH IN ALL MASONRY.