



106 South Main Street  
O'Fallon, Missouri 63366

City of O'Fallon



**NEW CITY HALL COMPLEX**

**EAST WING  
BASEMENT PLAN**

**CONSTRUCTION DOCUMENTS**

Revisions

CONSTRUCTION ISSUE #1  
DECEMBER 5, 1997

CHANGE ORDER #2  
NO. 4 JAN. 27, 1998

Project No. 96036

Date SEPT. 4, 1997

Designed

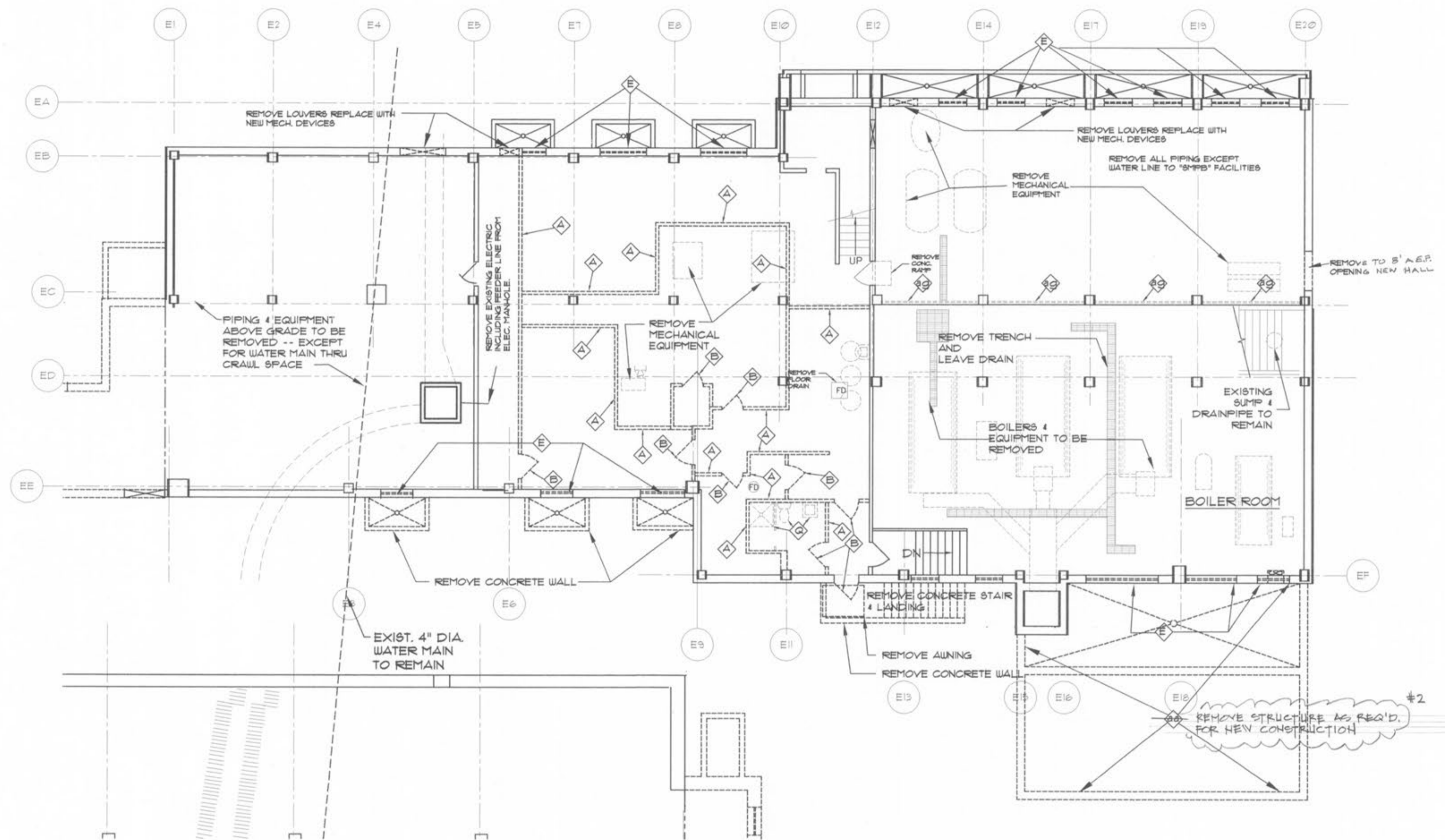
Drawn MAG3

Drawing No.

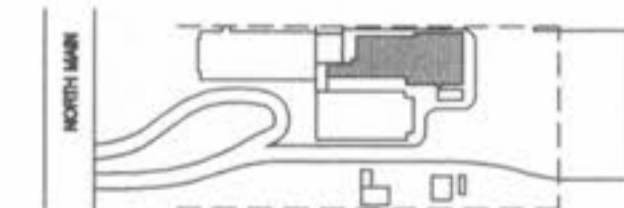
**D-12**

**DEMO KEY NOTES**

- ⓐ REMOVE PARTITION, OR WALL, AND ALL ELECTRICAL CONDUIT AND WIRING BACK TO PANEL -- AS SHOWN AS DASHED LINES ON PLAN. (PROTECT ALL EXISTING TERRAZZO FLOORING TO REMAIN IN PLACE).
- ⓑ REMOVE DOOR AND FRAME.
- ⓒ REMOVE DOOR AND FRAME AND SAVE FOR REUSE.
- ⓓ REMOVE LAV, COLD WATER, HOT WATER, SANITARY PIPES AND ALL PIPING BELOW FLOOR.
- ⓔ REMOVE WINDOW FRAME, CAULK AND SILL.
- ⓕ REMOVE CASEWORK - CAP ALL PLUMBING CONNECTION WHERE APPLICABLE.
- ⓖ NOT USED
- ⓗ REMOVE WOOD WORK / CASE WORK AND SAVE FOR RE-INSTALLATION.
- ⓓ EXISTING DOORS TO REMAIN.
- ⓙ REMOVE COUNTERTOP.
- ⓚ NOT USED
- ⓛ NOT USED
- ⓜ NOT USED
- ⓝ REMOVE TOILET STALL PARTITIONS.
- ⓞ NOT USED
- ⓟ NOT USED
- ⓠ REMOVE WATER CLOSET, COLD WATER, AND SANITARY, AND PIPING BELOW FLOOR -- IF MARBLE TOILET PARTITIONS EXIST, REMOVE (INCLUDING DOORS) & SAVE FOR REUSE.
- ⓡ REMOVE CARPET AND TACK STRIP CLEAN.
- ⓢ NOT USED
- ⓣ REMOVE CAST IRON RADIATOR (OR UNIT VENTILATOR) AND ALL ASSOCIATED PIPING.
- ⓤ NOT USED
- ⓖ NOT USED
- ⓗ NOT USED
- ⓙ NOT USED
- ⓚ NOT USED
- ⓛ NOT USED
- ⓜ NOT USED
- ⓝ NOT USED
- ⓞ NOT USED
- ⓟ REMOVE STACK.
- ⓠ REMOVE PORTION OF EXISTING WALL FOR INSTALLATION OF NEW DOOR.
- ⓡ REMOVE EXISTING MARBLE CHASE WALL.
- ⓢ REMOVE EXISTING DOORS & FRAME ARCH -- CLERESTORY TO REMAIN.
- ⓣ REMOVE DRAPERY ROD.
- ⓤ REMOVE HAND RAIL(S).
- ⓖ REMOVE EXISTING A.C. UNIT, PATCH AND FILL OPENING TO MATCH ADJOINING SURFACES. REUSE SALVAGE BRICKS OR APPROVED EQUAL. TOOTH IN ALL MASONRY.



**BASEMENT PLAN - EAST WING**  
SCALE: 1/8" = 1'-0"



**KEY PLAN**