

ATTIC PLAN - WEST WING
SCALE: 1/8" = 1'-0"

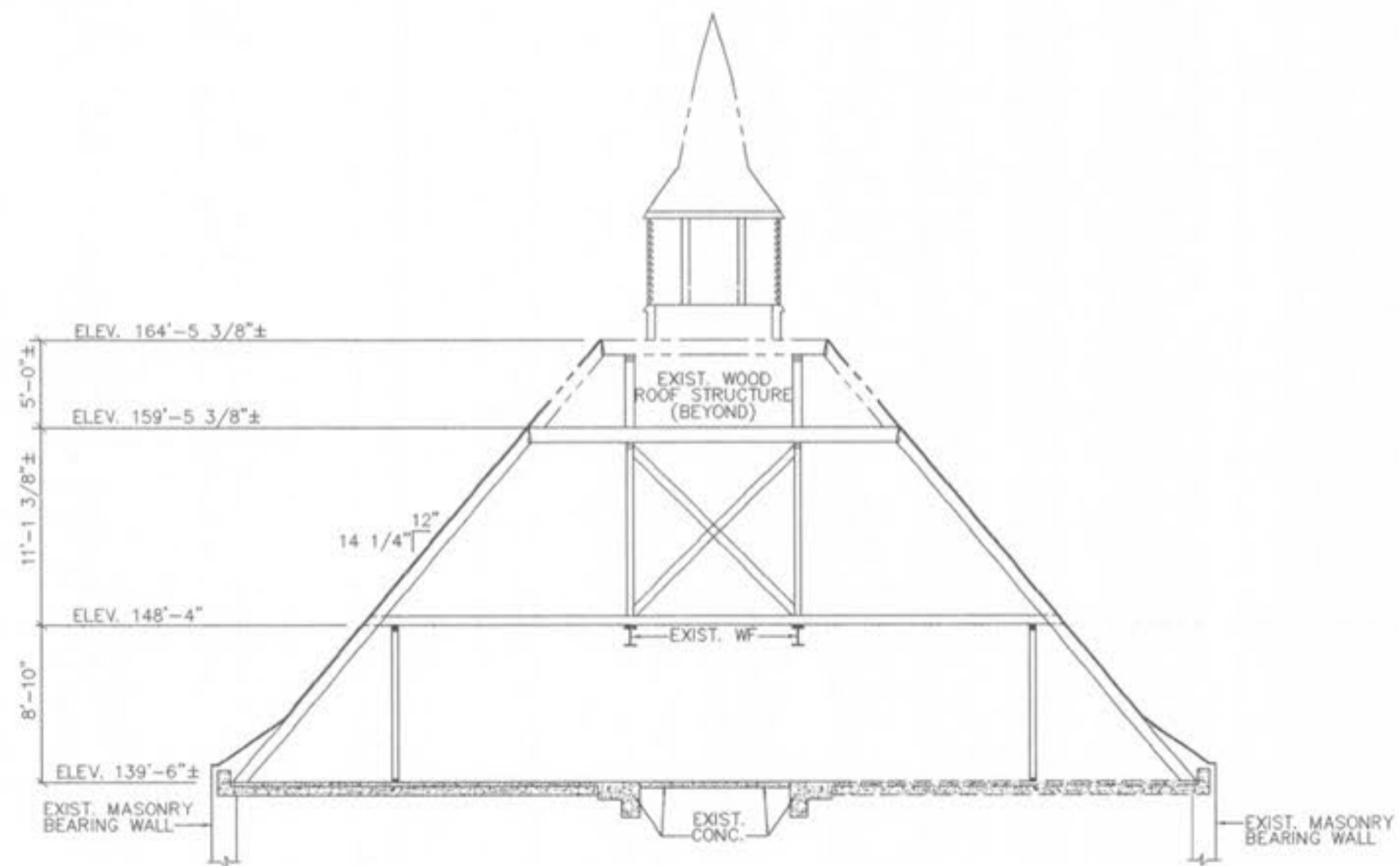
NOTE:
BASE BID: ADD R19 INSULATION IN ROOF & WALL
NEW STAIRS W/ WALLS
ALT. BID #4: ADD LAYER 5/8" "X" DRYWALL
 TAPE AND SAND
 ADD LIGHTS
 ADD SPRINKLERS
 ADD HEAT & VENTILATION

*NOTE: DRYWALL APPLIED AT UNDERSIDE OF ROOF RAFTERS TO RIDGE

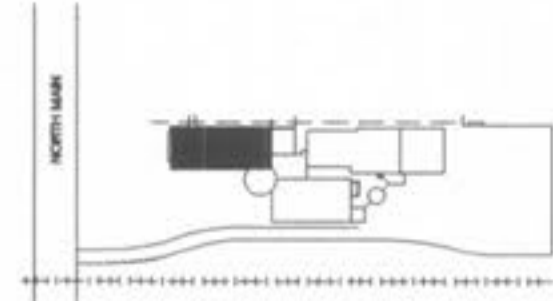
NOTE --- PARTITION TYPES: ALL NEW SHADED INTERIOR PARTITIONS ARE TYPE P1, UNLESS OTHERWISE NOTED.

PLAN KEY NOTES

- 1 PATCH TO MATCH EXISTING PARTITION AND BASE.
- 2 PATCH TO MATCH EXISTING BASE.
- 3 PATCH TO MATCH EXISTING FLOOR.
- 4 NEW COAT ROD AND SHELF.
- 5 NEW STC RATED FOLDING PARTITION.
- 6 FLOOR EXPANSION JOINT (SEE DETAILS).
- 7 REFURBISH EXISTING WINDOWS.
- 8 EXISTING MILLWORK REMAINS --- CLEAN AND REFURBISH --- SEE SPECIFICATIONS.
- 9 RELOCATED EXISTING MILLWORK
- 10 INFILL CONSTRUCTION FOR FLOOR AREA (SEE DETAILS).
- 11 REPLACE STAIR HANDRAIL (SEE DETAIL).
- 12 INSTALL GUARDRAIL. (SEE DETAIL).
- 13 INSTALL SEVEN (7) ADJUSTABLE SHELVES.
- 14 3" PC CONC. CEIL'G - SEE DTL & STRUCT.
- 15 PROVIDE NEW LIGHTWEIGHT CONCRETE FILL TO TAPER UP SHOWER ROOM FLOOR TO ACCESSIBLE SHOWER STALL. PROVIDE 1/2" LIP AT 2:1 SLOPE AT ACCESSIBLE STALL.
- 16 PROVIDE ACCESSIBLE RECESSED SHOWER RECEPTOR WITH 1/2" LIP AT 2:1 SLOPE.
- 17 CASSED OPENING
- 18 HORIZONTAL BLINDS (ALT. BID)
- 19 TRANSLUCENT GLASS INNER PANE
- 20 SECONDARY GLAZED WINDOW, INSTALL AFTER EXISTING WINDOW REFURBISHED.
- 21 OPERABLE WINDOWS
- 22 NEW HANDRAIL/GUARDRAIL



A SECTION
N.T.S.



KEY PLAN
N.T.S.

Revisions
 *CONSTRUCTION ISSUE
 DECEMBER 5, 1997
 CHANGE ORDER
 NO. 1 JAN 27, 1998

Project No. 96036
 Date SEPT. 4, 1997
 Designed
 Drawn MAG3
 Drawing No. **A-10**