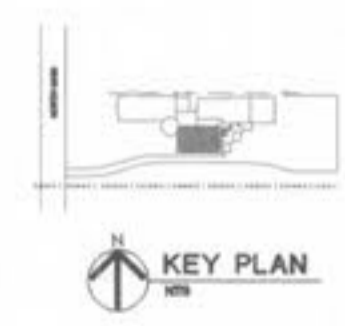


SOUTH WING - BASEMENT PLAN
 SCALE: 1/8" = 1'-0"



- NOTE: PARTITION TYPES: ALL NEW SHADDED INTERIOR PARTITIONS ARE TYPE P1, UNLESS OTHERWISE NOTED.
- PLAN KEY NOTES**
- ◇ PATCH TO MATCH EXISTING PARTITION AND BASE.
 - ◇ PATCH TO MATCH EXISTING BASE.
 - ◇ PATCH TO MATCH EXISTING FLOOR.
 - ◇ NEW COAT ROD AND SHELF.
 - ◇ NEW STC RATED FOLDING PARTITION.
 - ◇ FLOOR EXPANSION JOINT (SEE DETAILS).
 - ◇ REFURBISH EXISTING WINDOWS.
 - ◇ EXISTING MILLWORK REMAINS - CLEAN AND REFURBISH - SEE SPECIFICATIONS.
 - ◇ RELOCATED EXISTING MILLWORK.
 - ◇ INFILL CONSTRUCTION FOR FLOOR AREA (SEE DETAILS).
 - ◇ REPLACE STAIR HANDRAIL (SEE DETAIL).
 - ◇ INSTALL GUARDRAIL (SEE DETAIL).
 - ◇ INSTALL SEVEN (7) ADJUSTABLE SHELVES.
 - ◇ 2" PC CONG. CEILING - SEE DET. & STRUCT.
 - ◇ PROVIDE NEW LIGHTWEIGHT CONCRETE FILL TO TAPER UP SHOWER ROOM FLOOR TO ACCESSIBLE SHOWER STALL. PROVIDE 1/2" LP AT 2:1 SLOPE AT ACCESSIBLE STALL.
 - ◇ PROVIDE ACCESSIBLE RECESSED SHOWER RECEPTOR WITH 1/2" LP AT 2:1 SLOPE.
 - ◇ CASSED OPENING.
 - ◇ HORIZONTAL BLIND (A.L.T. B.L.D.)
 - ◇ TRANSLUCENT GLASS PAPER PANE.
 - ◇ SECONDARY GLAZED WINDOW INSTALL AFTER EXISTING WINDOW REFURBISHED.
 - ◇ OPERABLE WINDOWS.
 - ◇ NEW HANDRAIL/GUARDRAIL.
 - ◇ EXISTING WALL TO REMAIN.
 - ◇ EXISTING TO REMAIN WITH DOOR OPENING.

Revisions

CONSTRUCTION ISSUE	DECEMBER 5, 1997
CHANGE ORDER NO. 1	JANUARY 27, 1998

Project No.	96036
Date	SEPT. 4, 1997
Designed	
Drawn	
Drawing No.	A-12