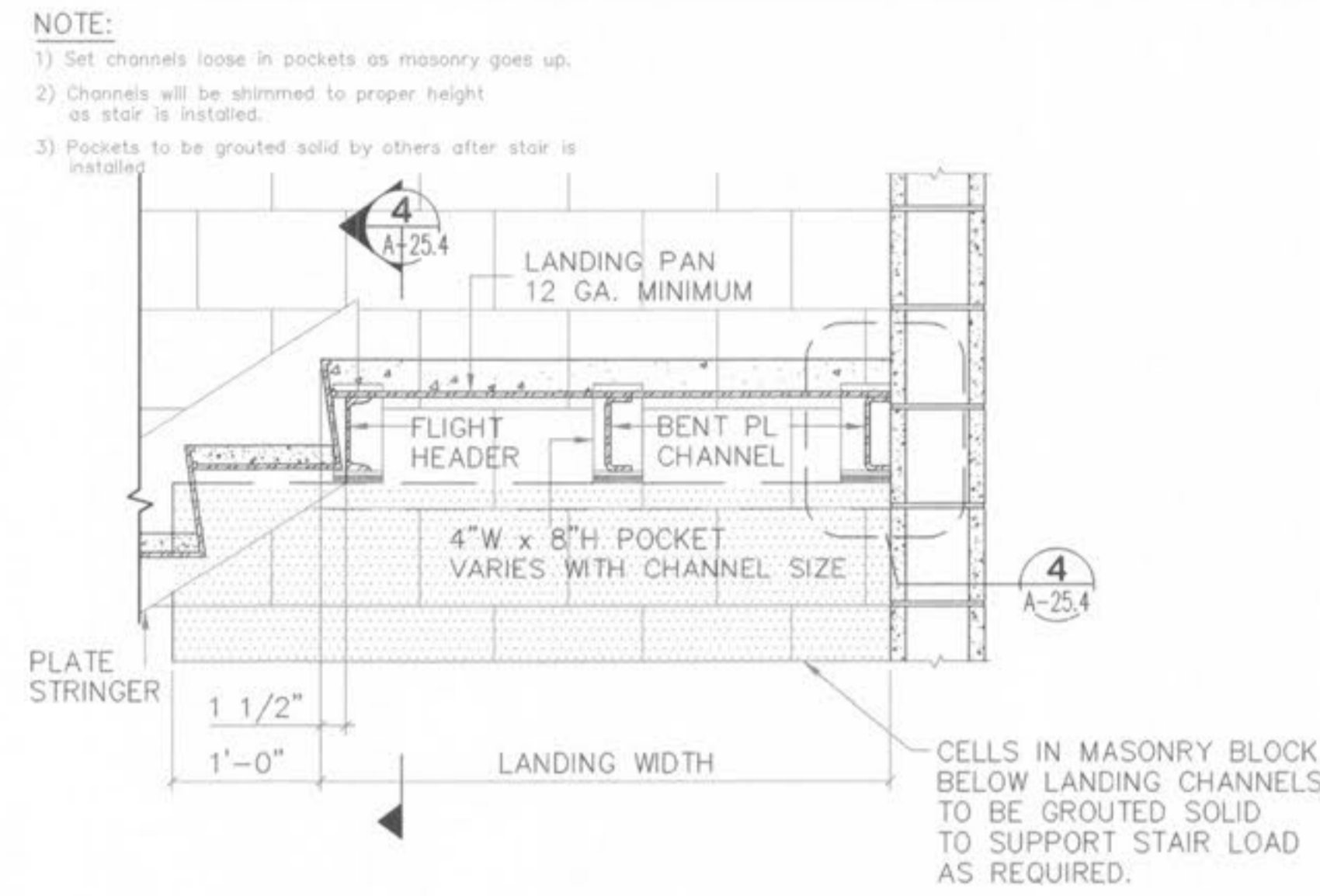
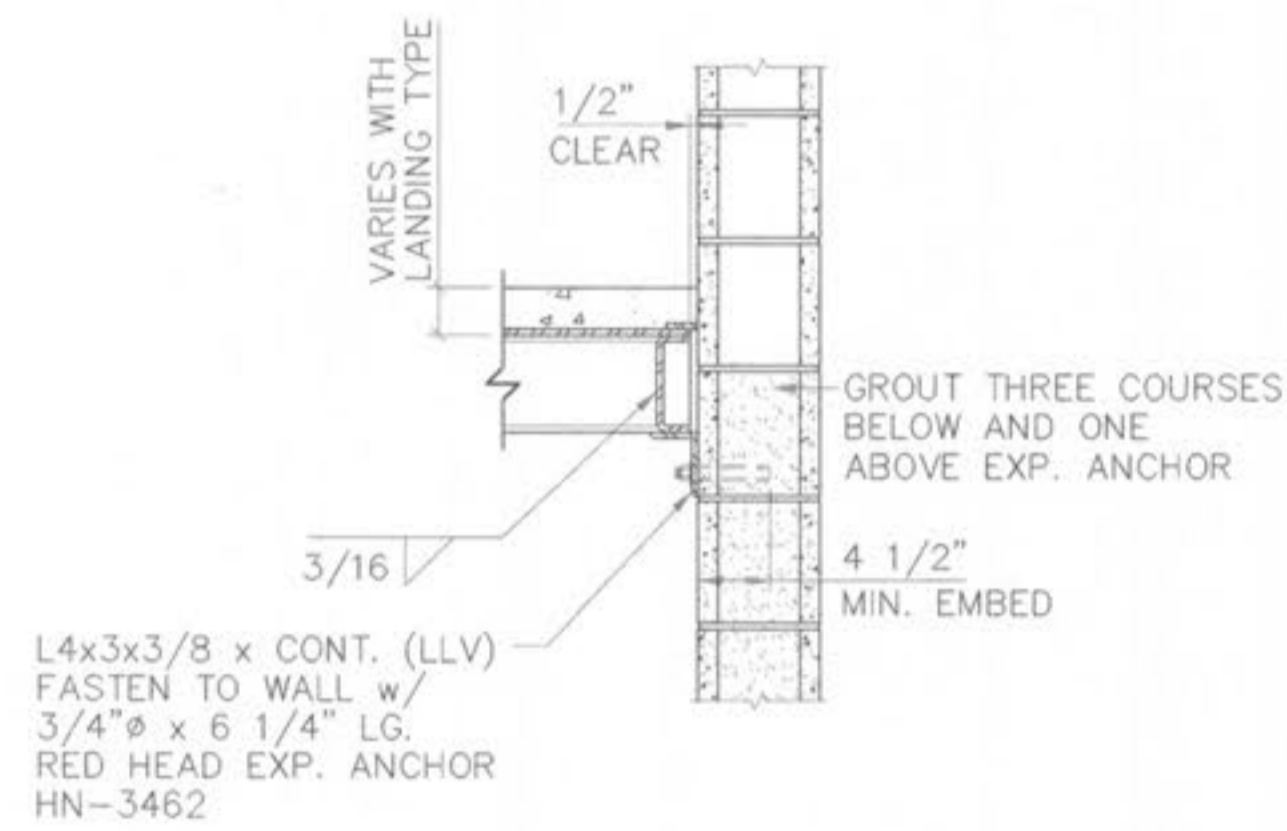


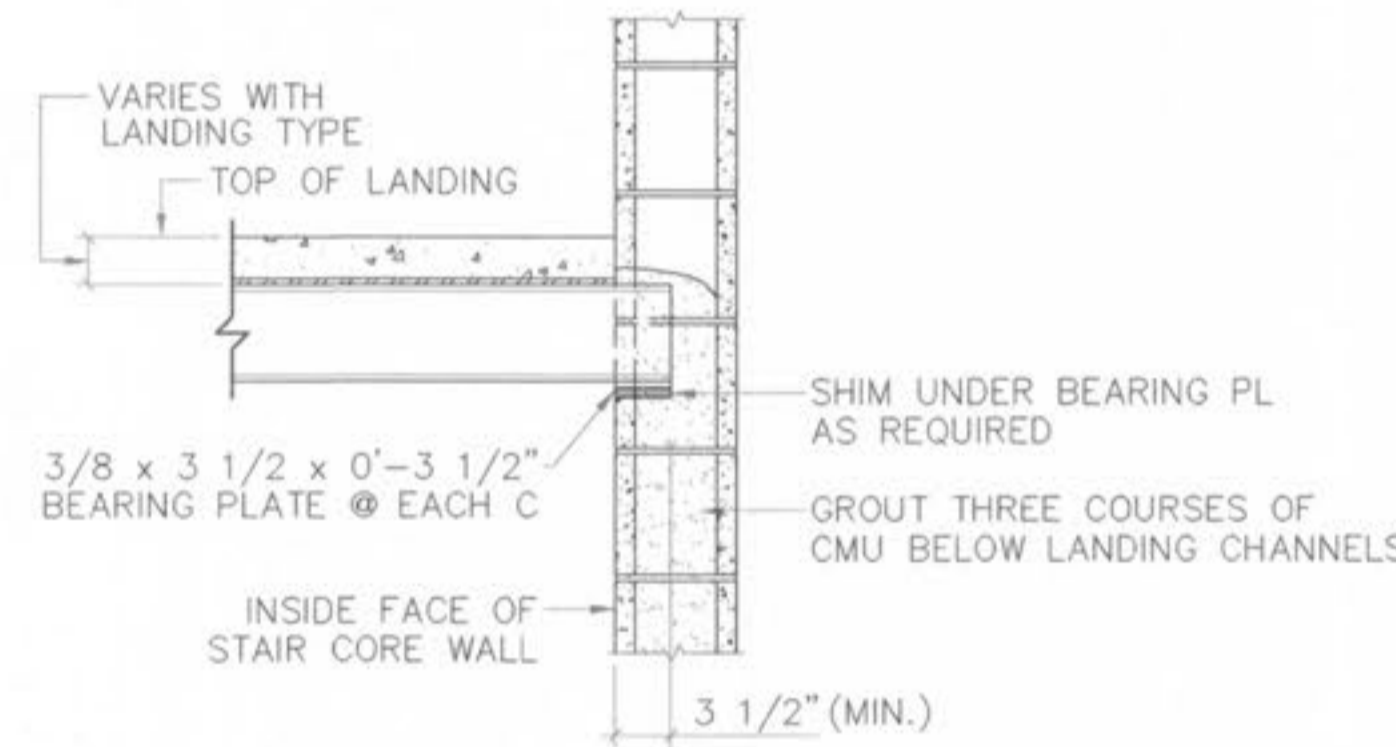
1 STAIR LANDING DETAIL (TYPE 1)
SCALE: 1" = 1'-0"



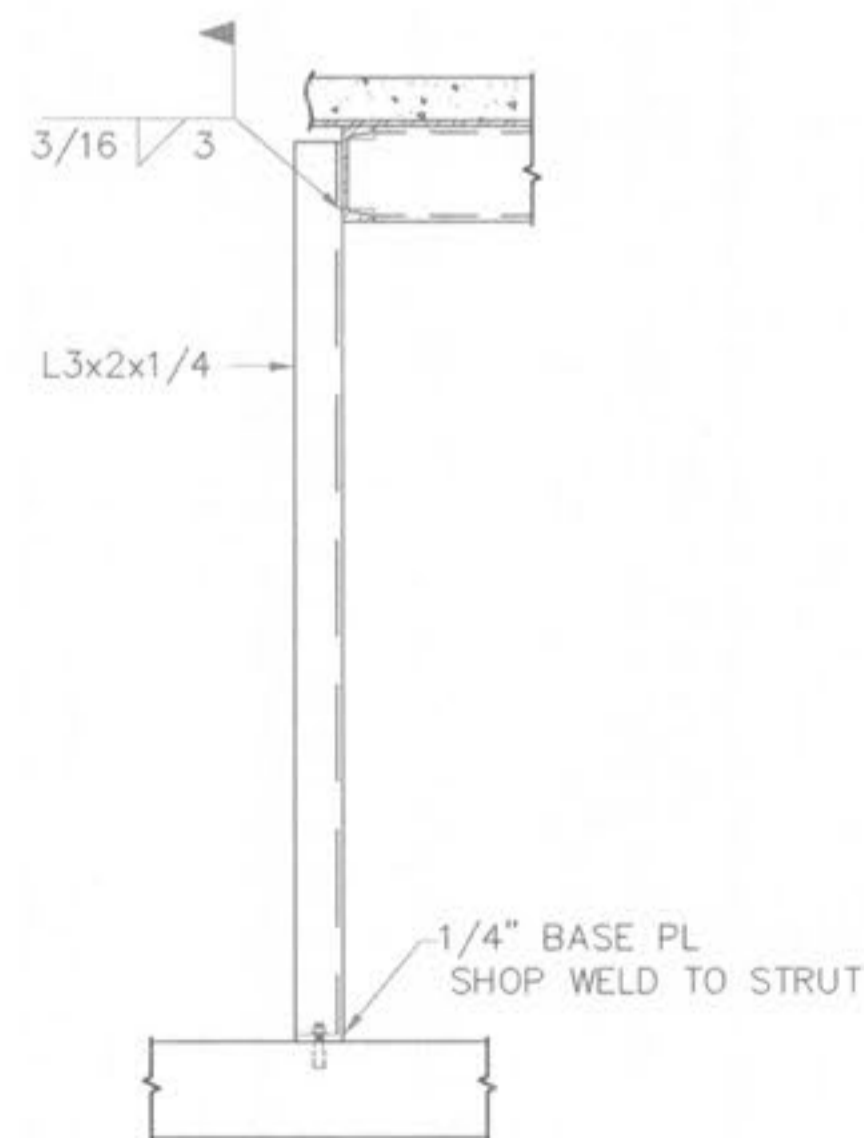
3 STAIR LANDING DETAIL (TYPE 2)
SCALE: 1" = 1'-0"



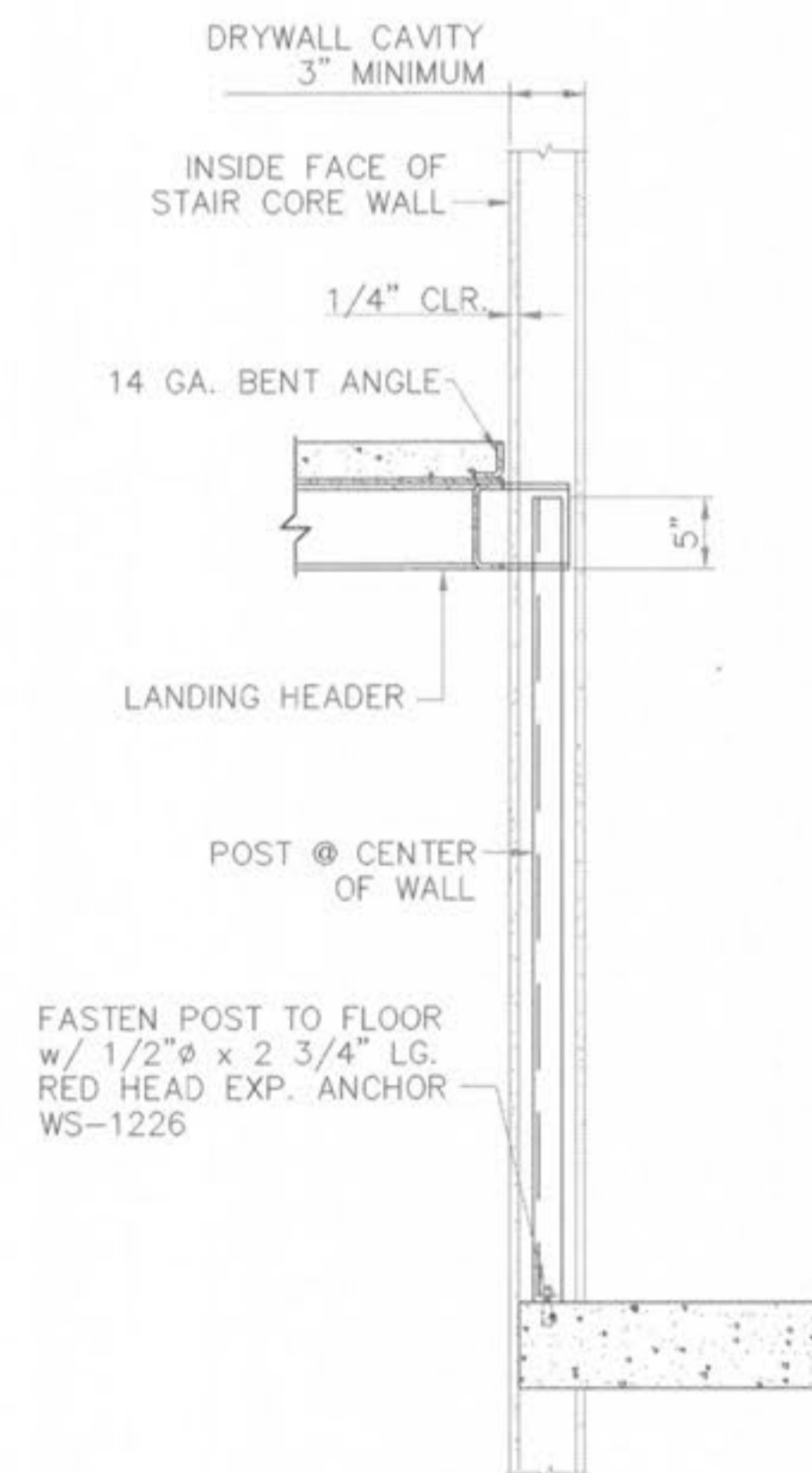
2 LANDING AT CMU WALL (TYPE 1)
SCALE: 1" = 1'-0"



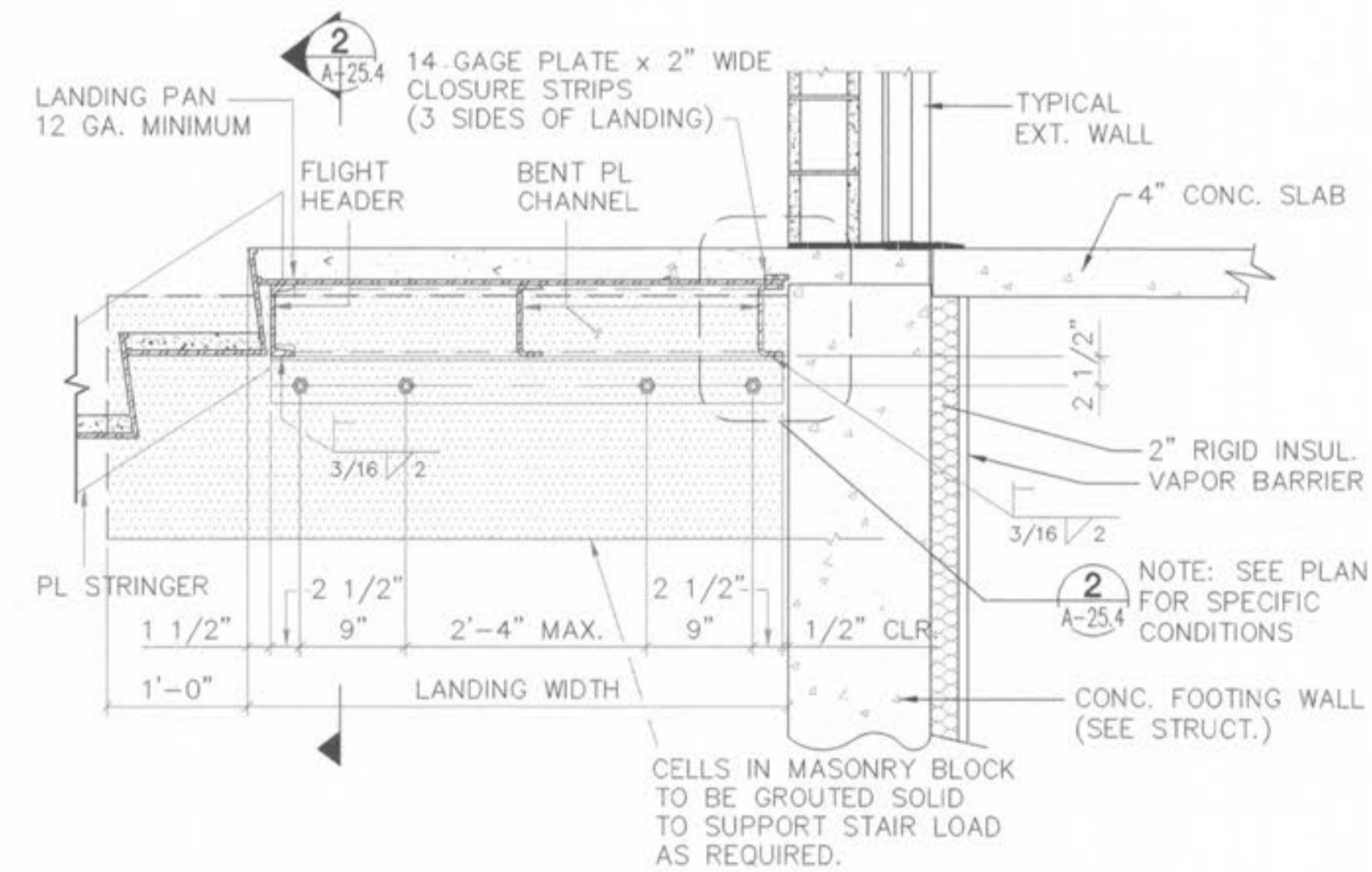
4 LANDING AT CMU WALL (TYPE 2)
SCALE: 1" = 1'-0"



7 LANDING SUPPORT
SCALE: 1" = 1'-0"



8 LANDING SUPPORT
SCALE: 1" = 1'-0"



9 DETAIL AT THRESHOLD (STAIR G)
SCALE: 1" = 1'-0"

NOTE:
1) Set channels loose in pockets as masonry goes up.
2) Channels will be shimmed to proper height as stair is installed.
3) Pockets to be grouted solid by others after stair is installed.