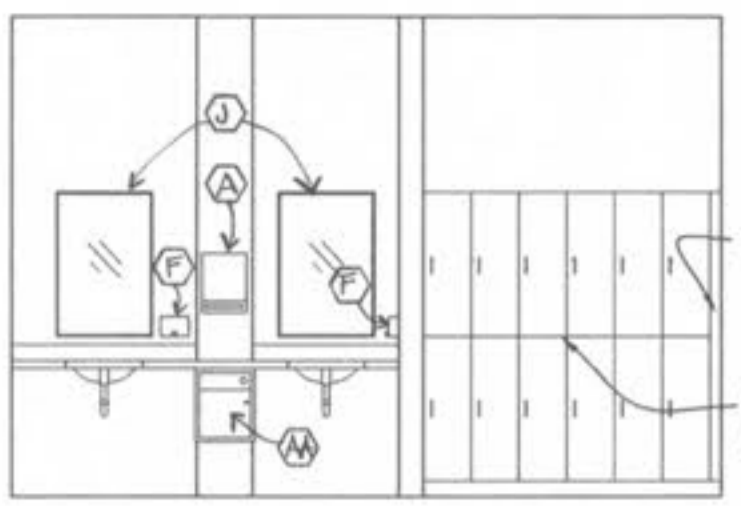
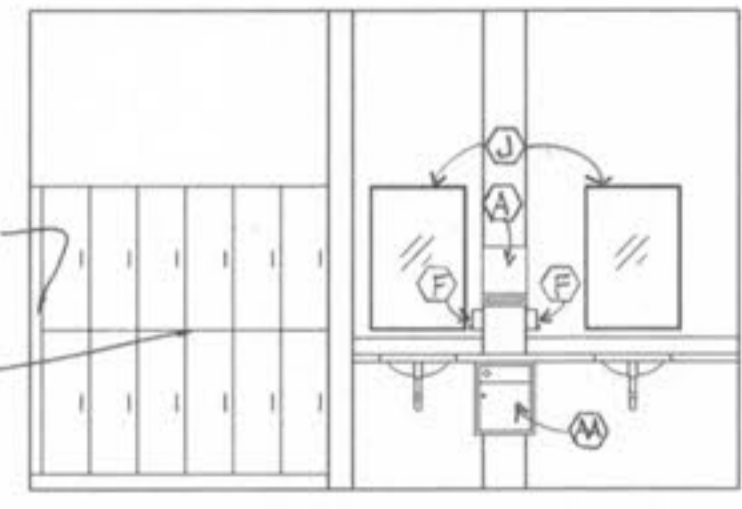


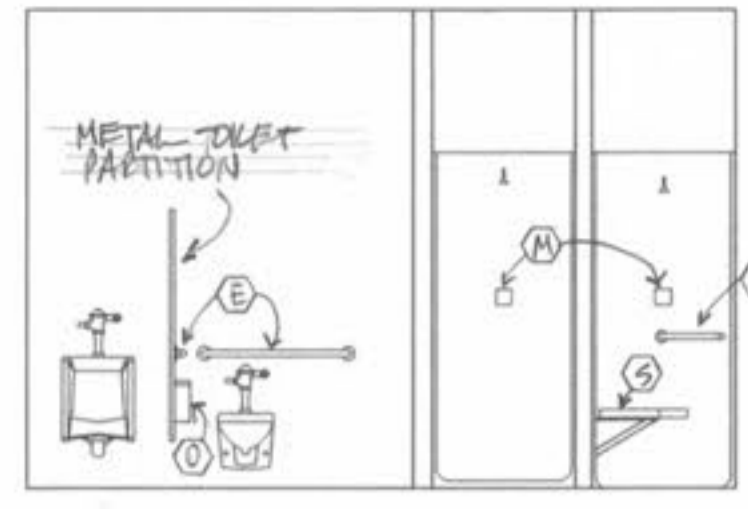
1 WOMEN TOILET - E008



2 LOCKER ROOM - E009



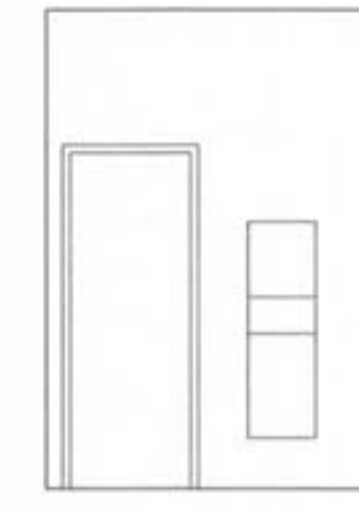
3 LOCKER SHOWER - E007



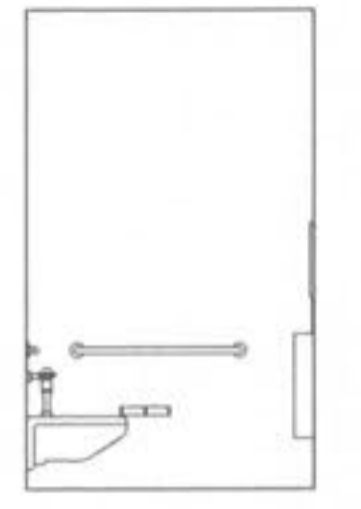
4 MEN TOILET - E006



5 MEN TOILET - E108



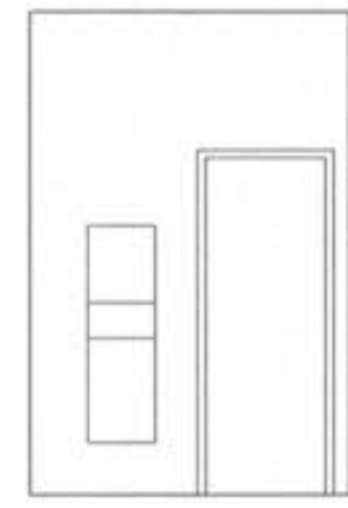
6 MEN TOILET - E108



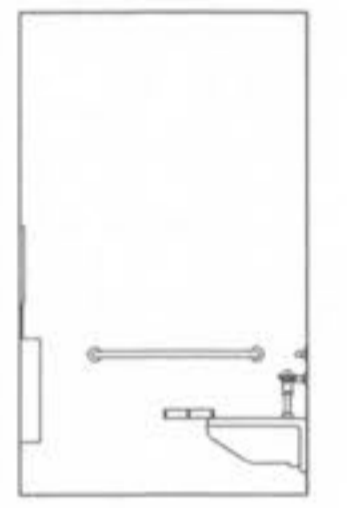
7 MEN TOILET - E108



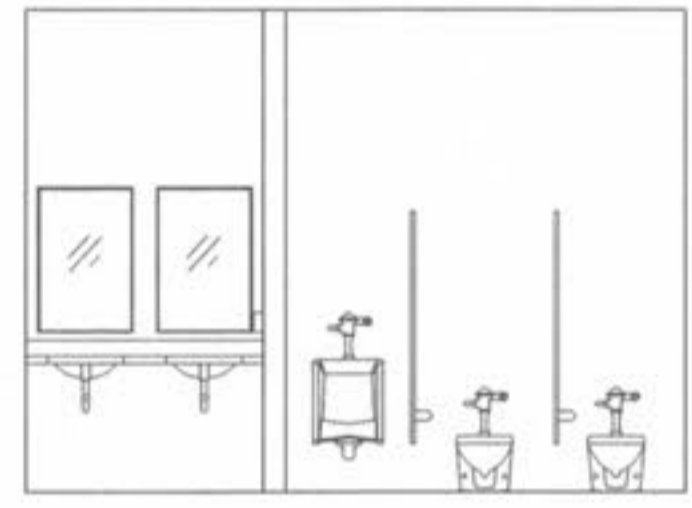
8 WOMEN TOILET - E109



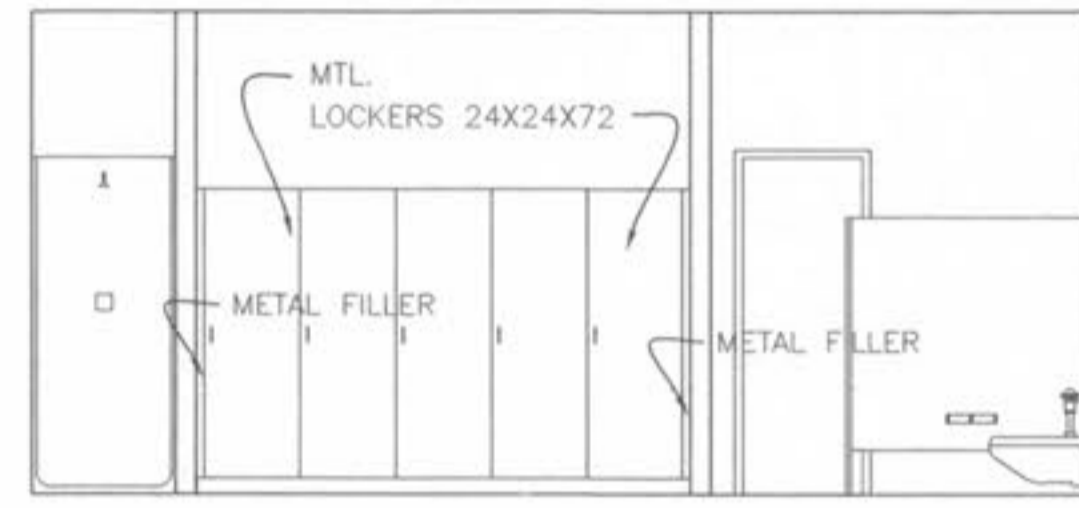
9 WOMEN TOILET - E109



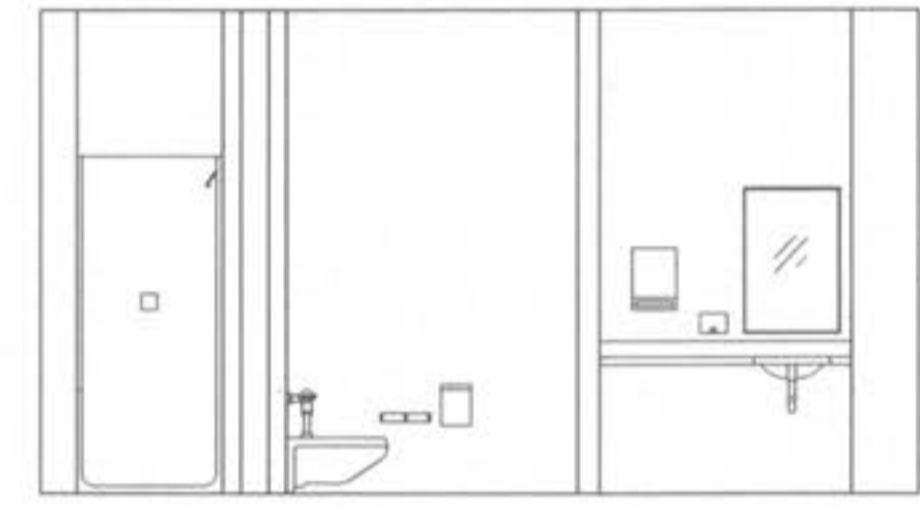
10 WOMEN TOILET - E109



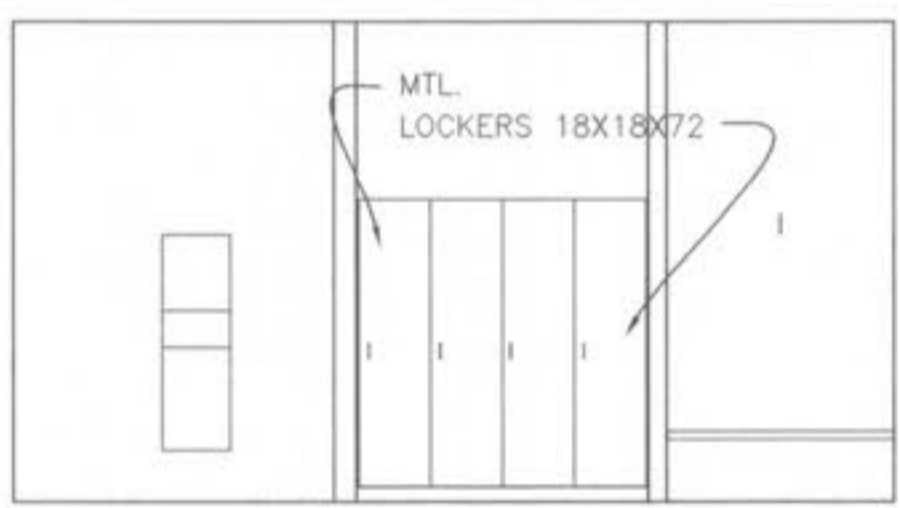
11 CMD. STAFF LOCKERS - E110



12 CMD. STAFF LOCKERS - E110



13 CMD. STAFF F. TOILET - E113



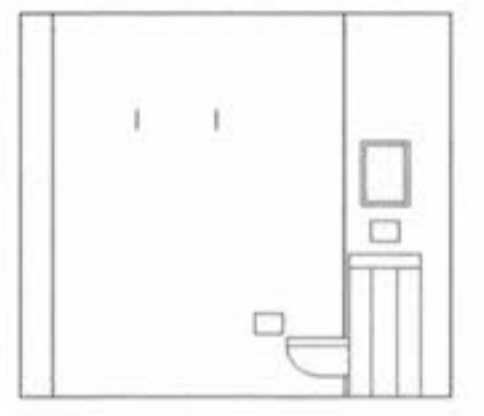
14 CMD. STAFF F. TOILET - E113



15 TOILET - E130



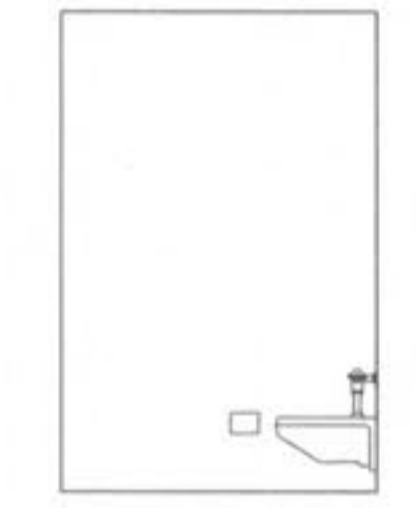
16 TOILET - E130



17 DOUBLE - E139



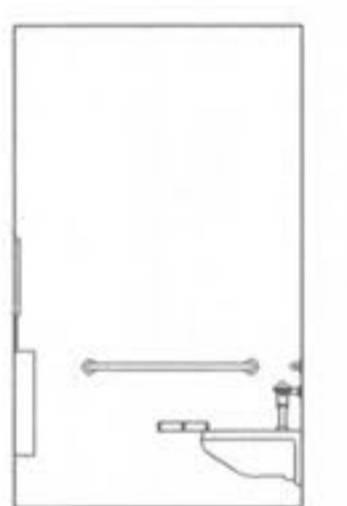
18 TOILET/SWR - E143



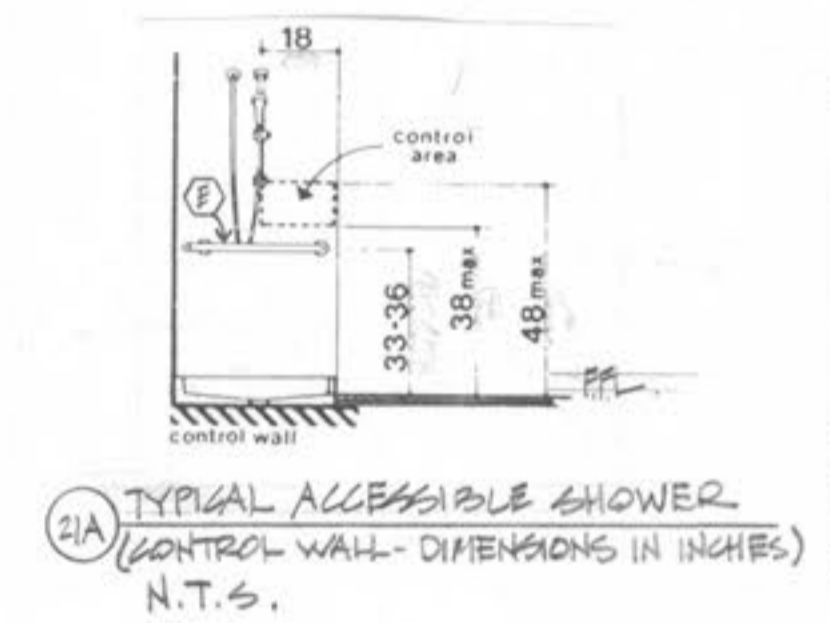
19 TOILET/SWR - E143



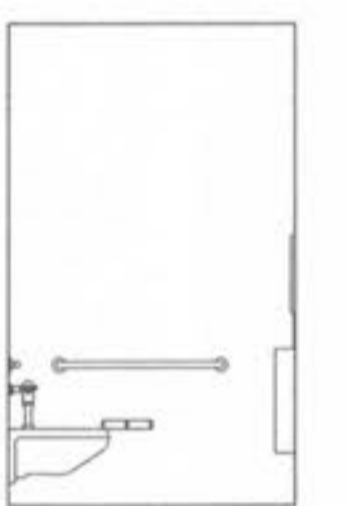
20 WOMEN - E214



21 WOMEN - E214



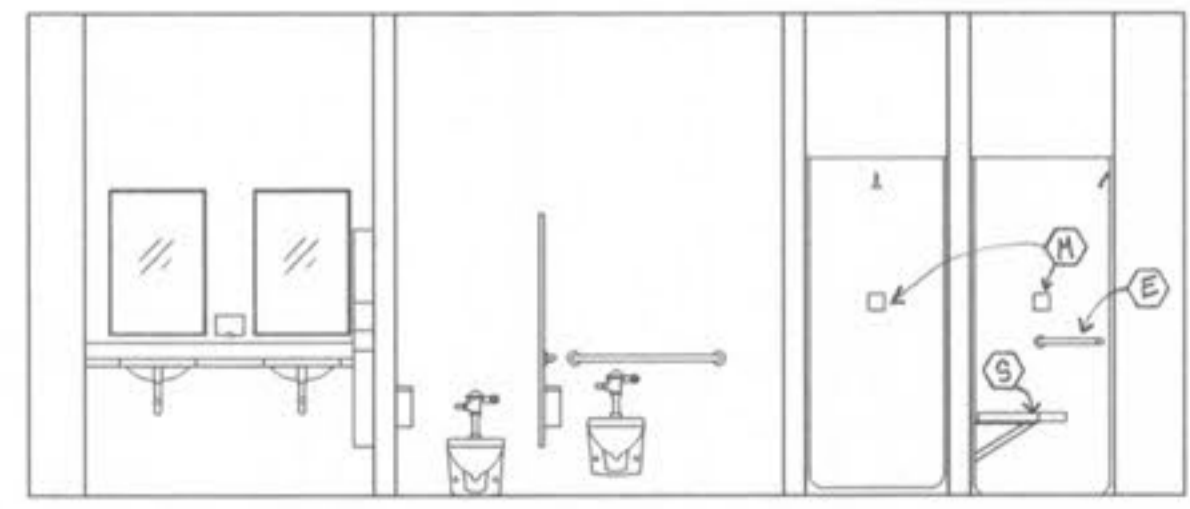
21A TYPICAL ACCESSIBLE SHOWER (CONTROL WALL - DIMENSIONS IN INCHES) N.T.S.



22 MEN - E215



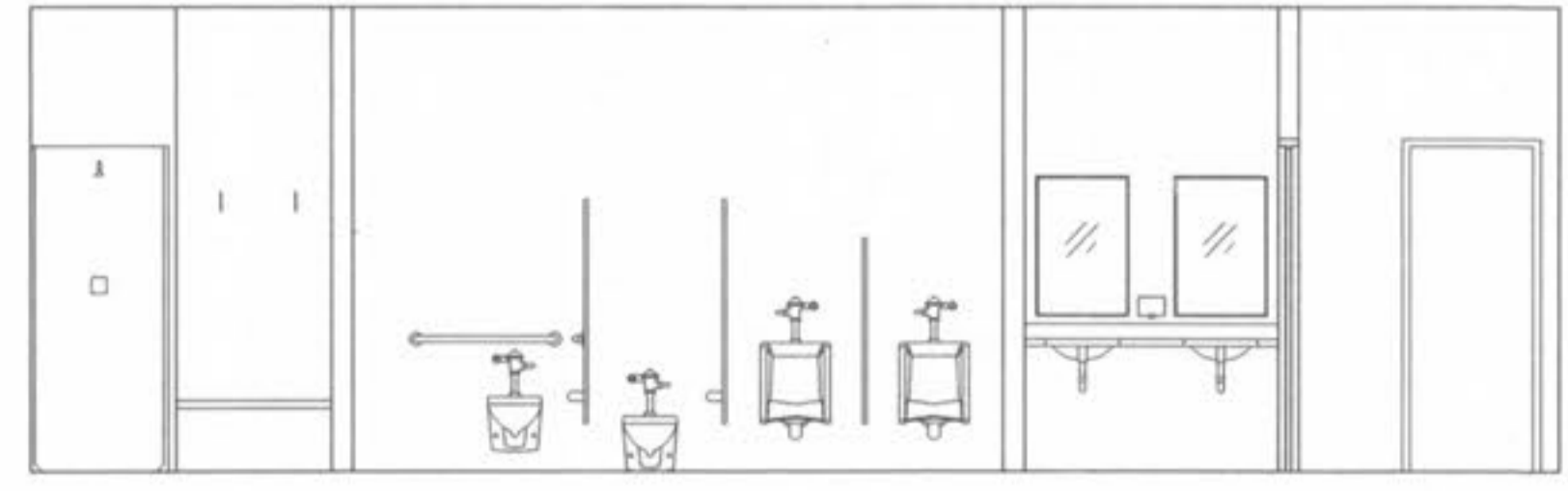
23 MEN - E215



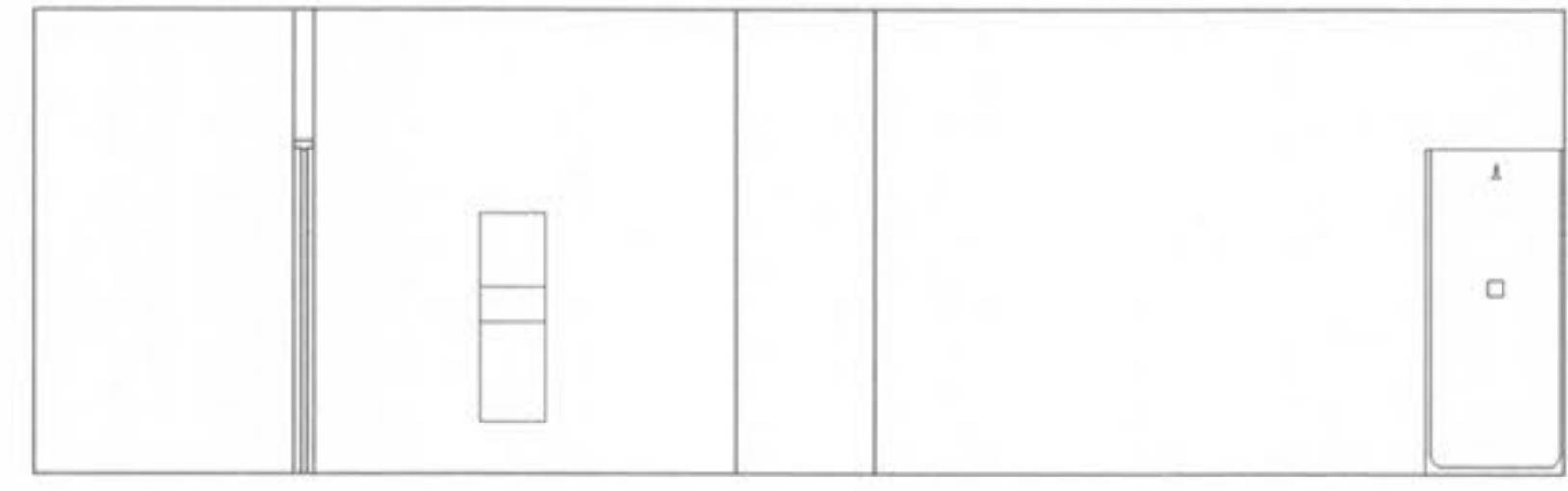
24 WOMEN - E230



25 WOMEN - E230



26 MEN - E232



27 MEN - E232

NOTE: REFER TO ENLARGED PLANS FOR TOILET ACCESSORY NOTES

CONSTRUCTION DOCUMENTS

**CRD Campbell, Inc.**  
Engineers Architects Planners  
One Campbell Plaza 59th & Arsenal St. Louis, MO 63139 314/781-2004

STATE OF MISSOURI  
REGISTERED ARCHITECT  
FREDERICK WALLACE HILL  
NUMBER A-3405

City of O'Fallon  
138 South Main Street  
O'Fallon, Missouri 63366  
**NEW CITY HALL COMPLEX**

**CONSTRUCTION DOCUMENTS**

Revisions  
CONSTRUCTION ISSUE  
DECEMBER 5, 1997

Project No. 96036  
Date SEPT. 4, 1997  
Designed  
Drawn  
Drawing No. **A-46.1**