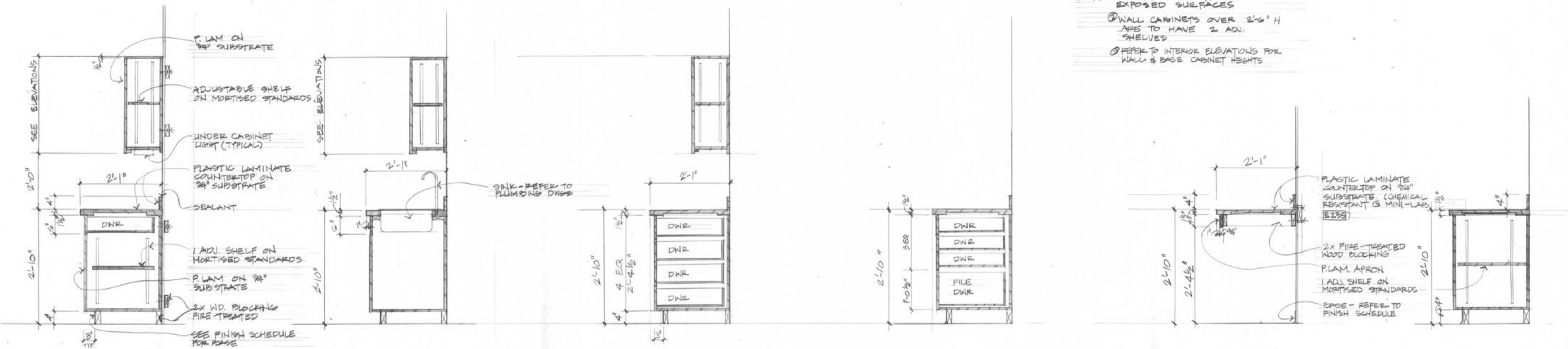
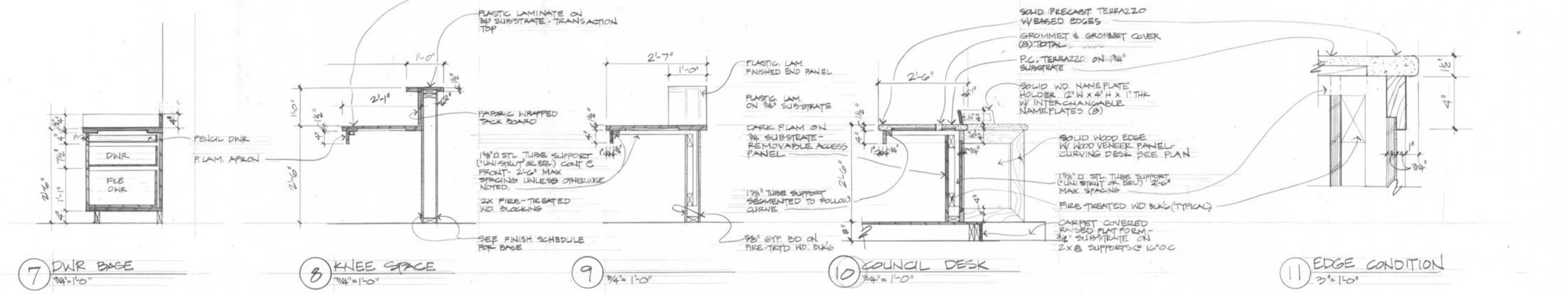


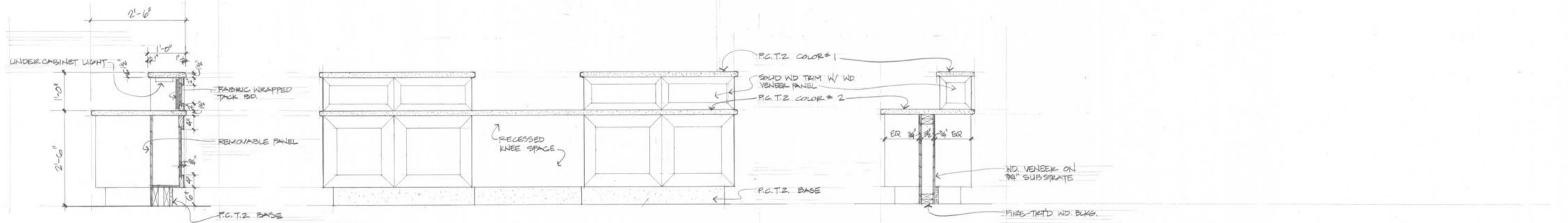
NOTE: ① PLASTIC LAMINATE ON ALL EXPOSED SURFACES
 ② WALL CABINETS OVER 2'-6" H ARE TO HAVE 2 ADJ. SHELVES
 ③ REFER TO INTERIOR ELEVATIONS FOR WALL & BASE CABINET HEIGHTS



① BASE CABINET W/ DWR 3/4" = 1'-0"
 ② SINK BASE 3/4" = 1'-0"
 ③ 4 DRAWER BASE 3/4" = 1'-0"
 ④ DRAWER BASE 3/4" = 1'-0"
 ⑤ KNEE SPACE 3/4" = 1'-0"
 ⑥ BASE CABINET 3/4" = 1'-0"



⑦ DWR BASE 3/4" = 1'-0"
 ⑧ KNEE SPACE 3/4" = 1'-0"
 ⑨ 3/4" = 1'-0"
 ⑩ COUNCIL DESK 3/4" = 1'-0"
 ⑪ EDGE CONDITION 3/4" = 1'-0"



⑫ RECP'T DESK 3/4" = 1'-0"
 ⑬ RECEPTION DESK - WEST LOBBY 3/4" = 1'-0"
 ⑭ KNEE SPACE @ RECP'T DESK 3/4" = 1'-0"