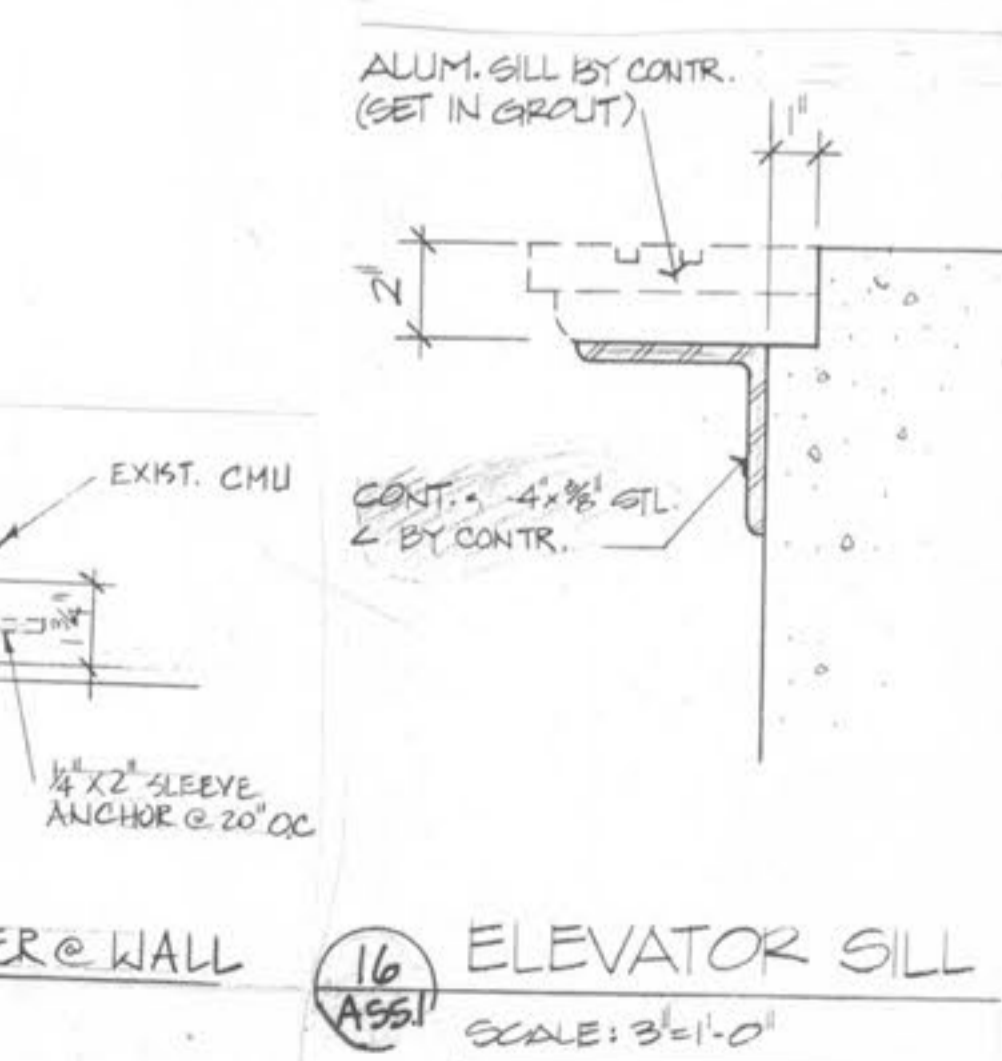
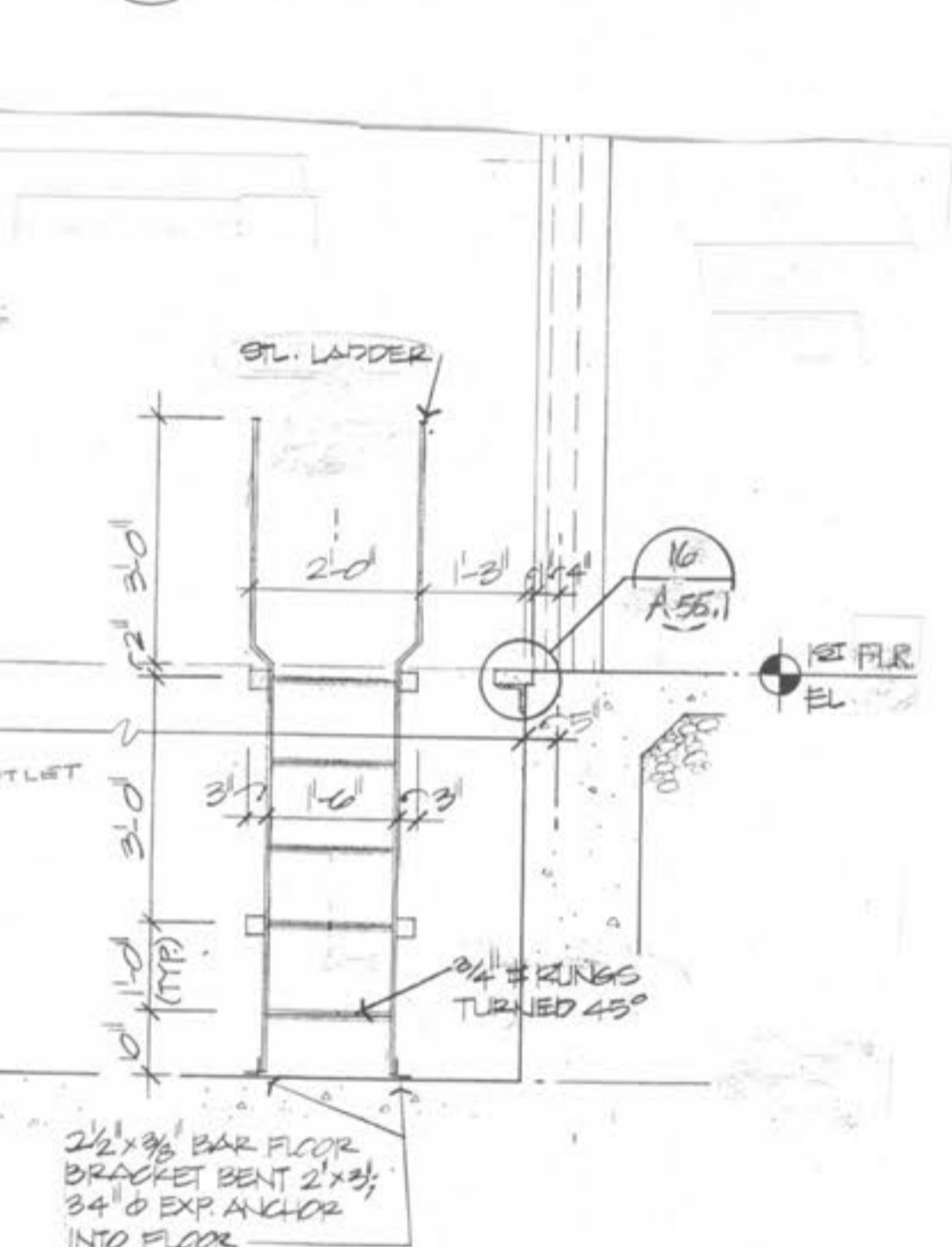
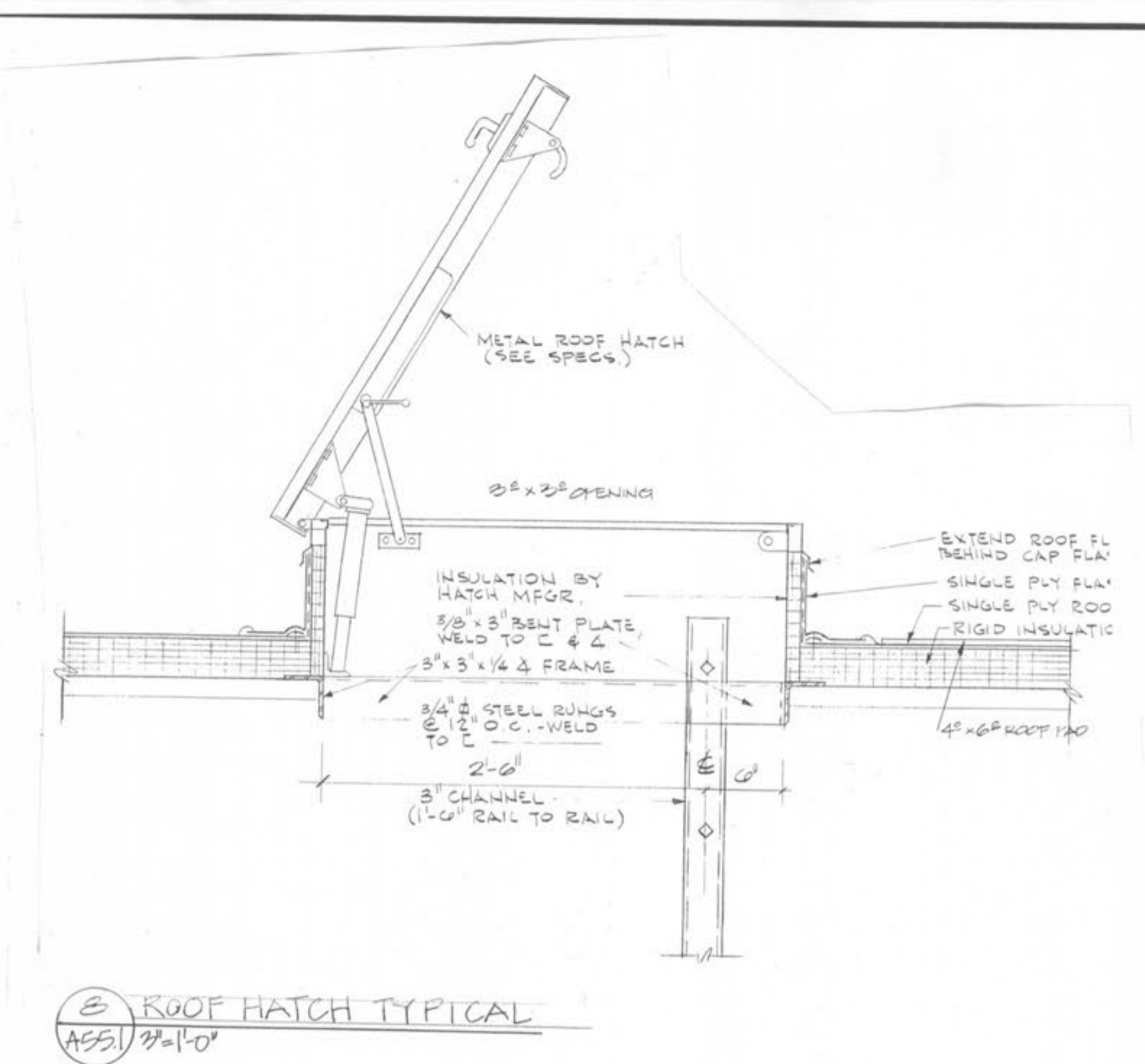
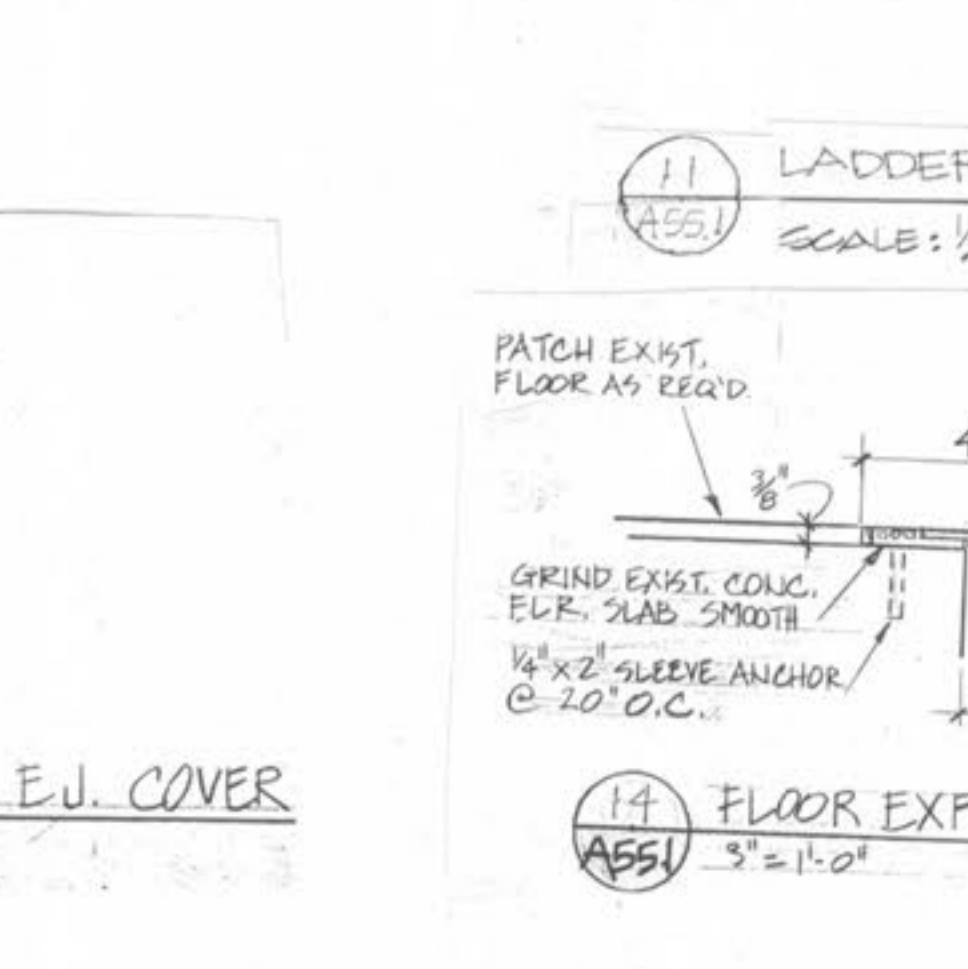
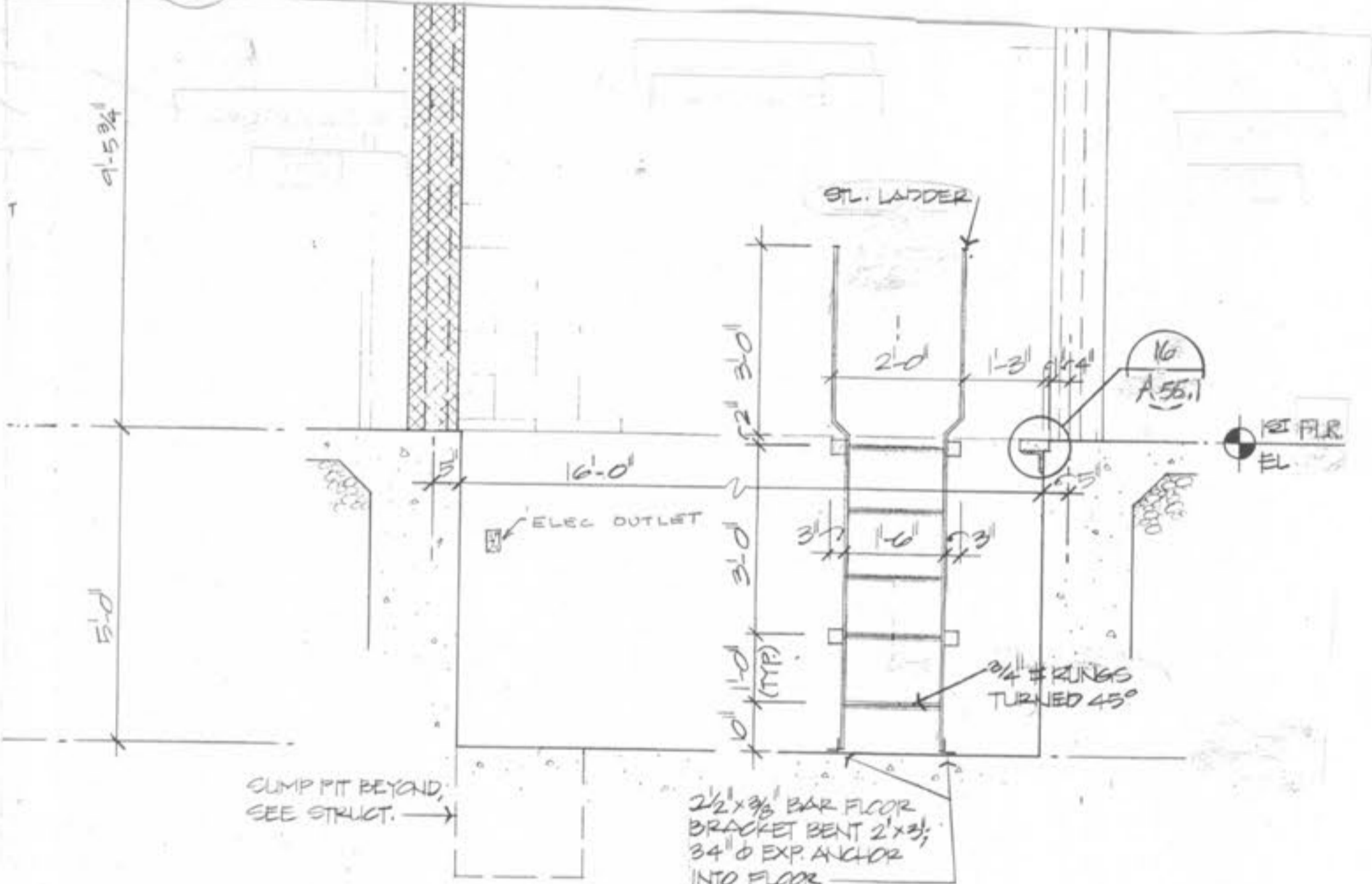
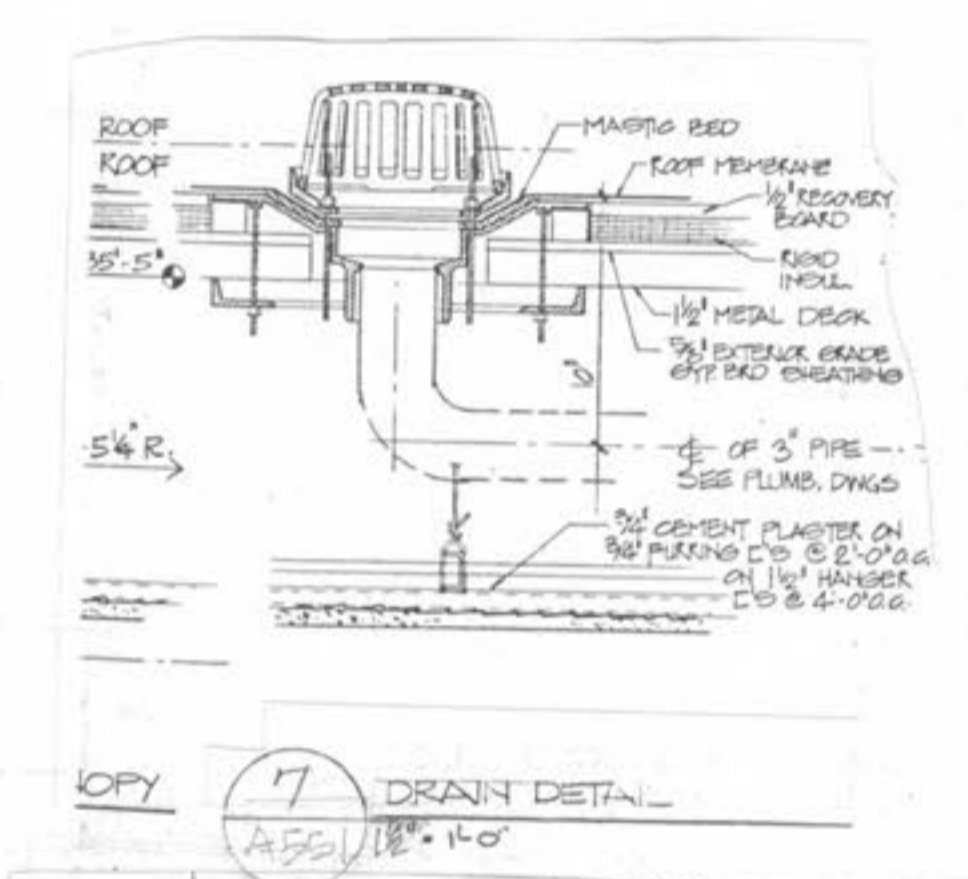
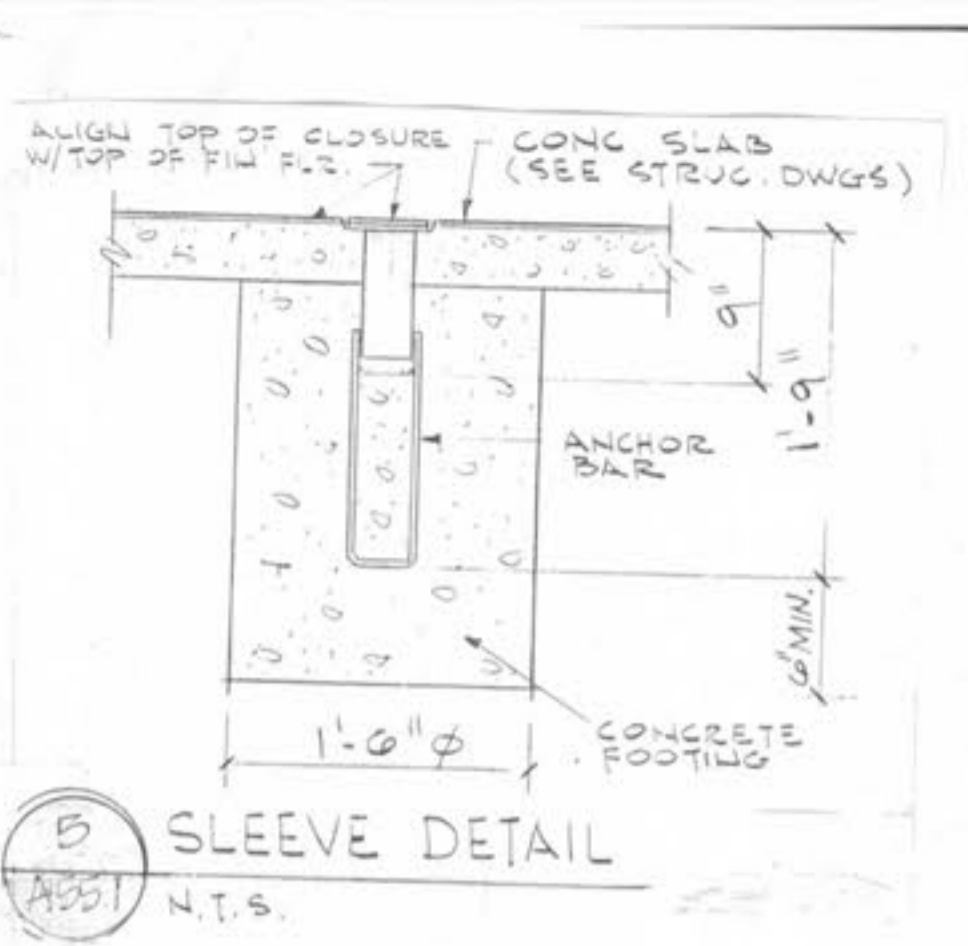
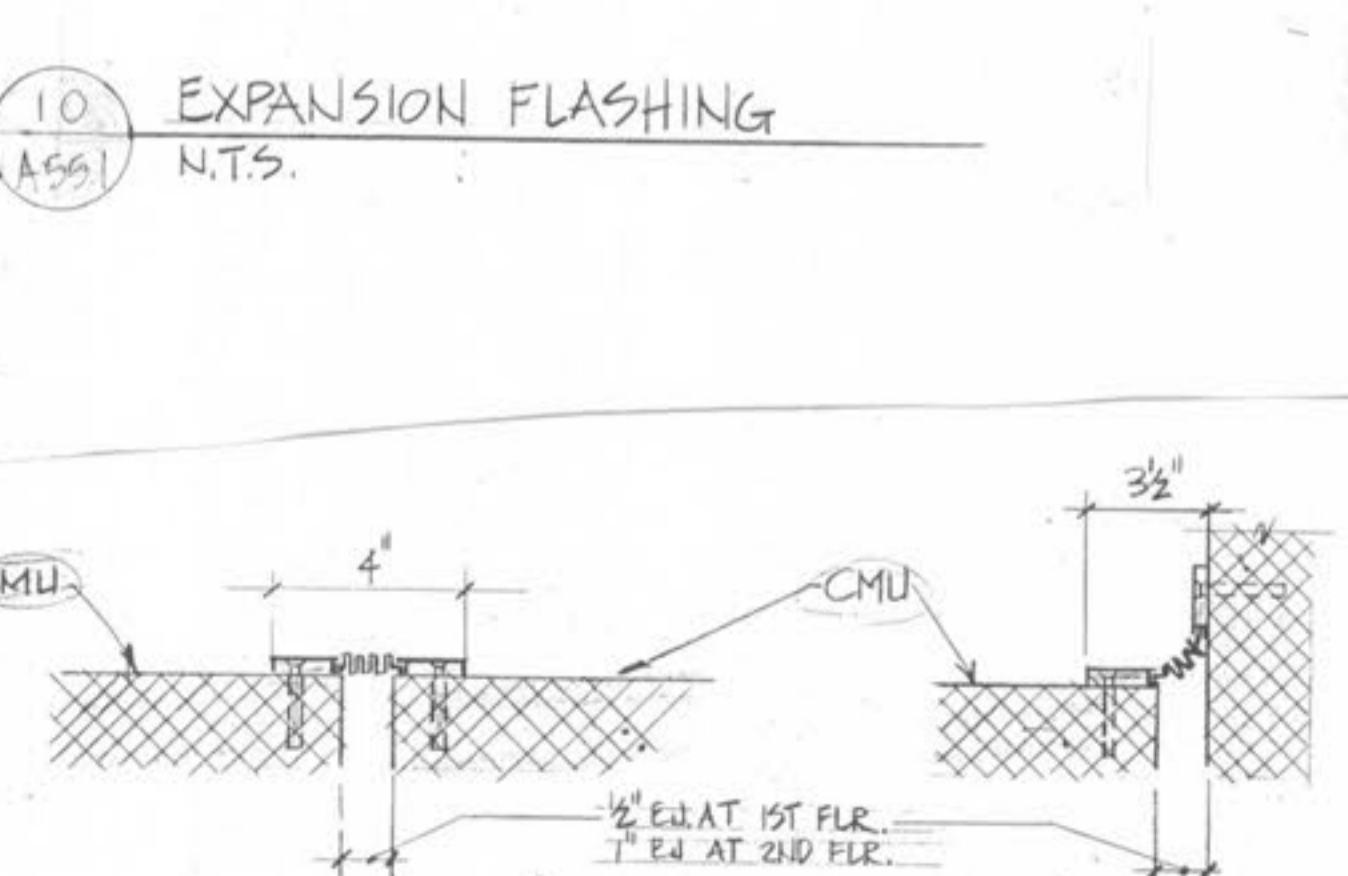
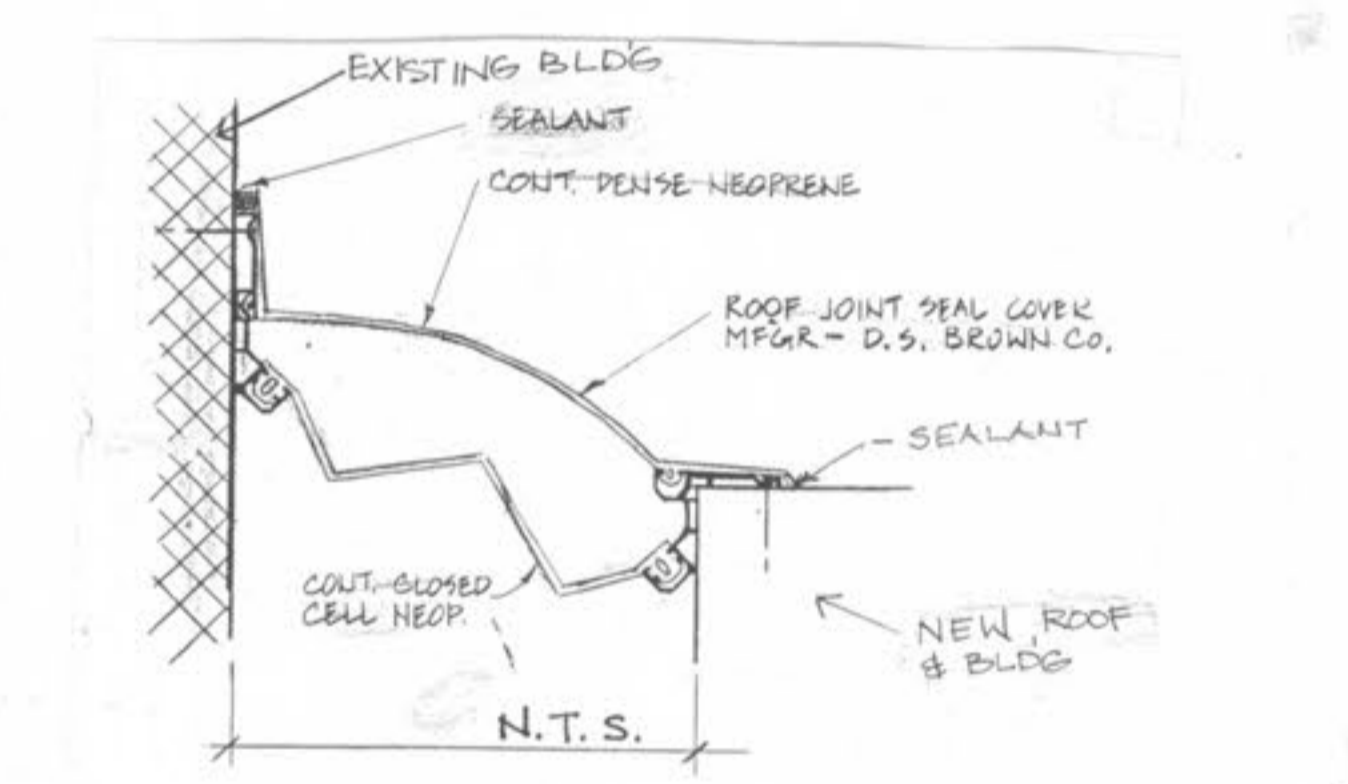
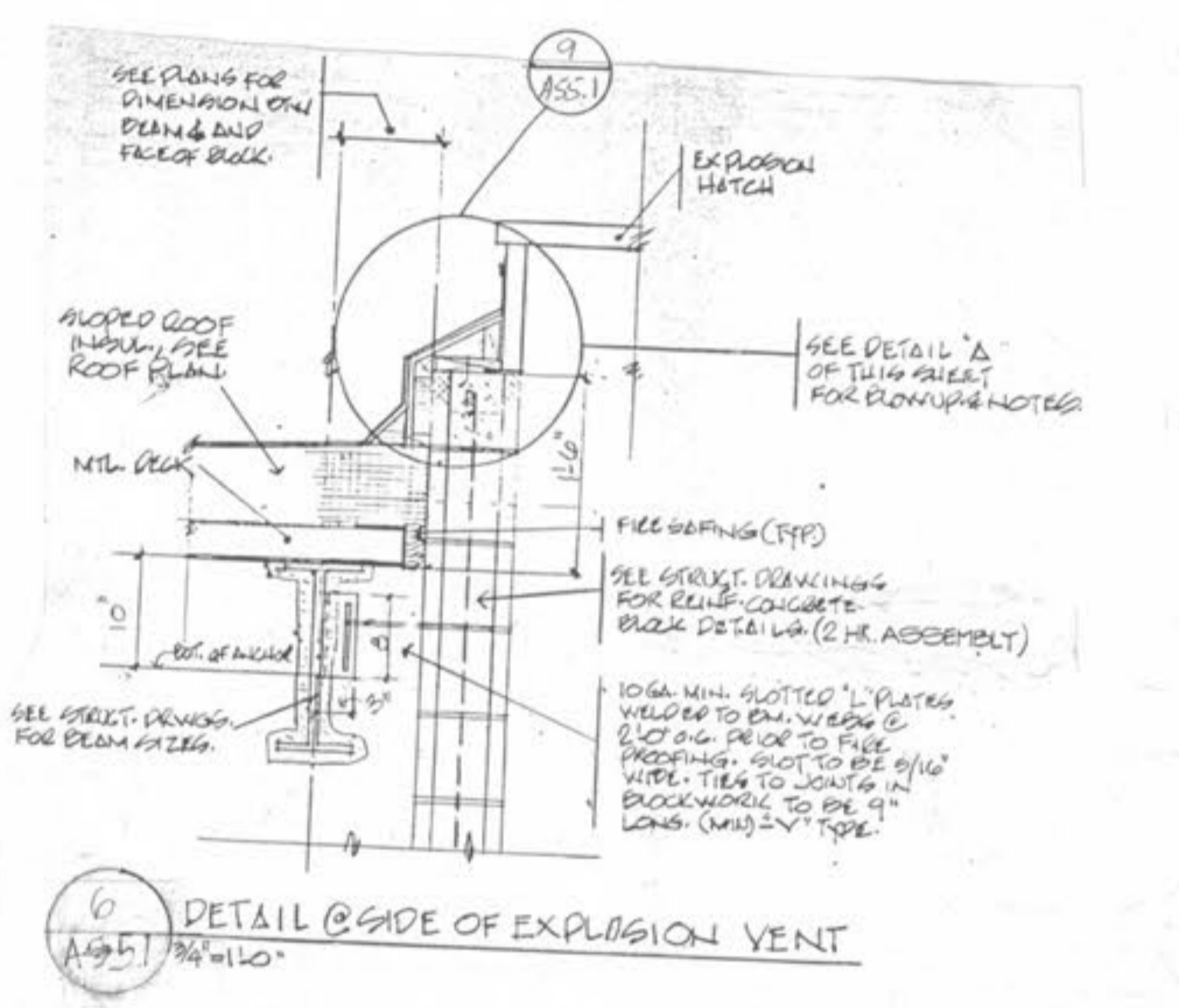
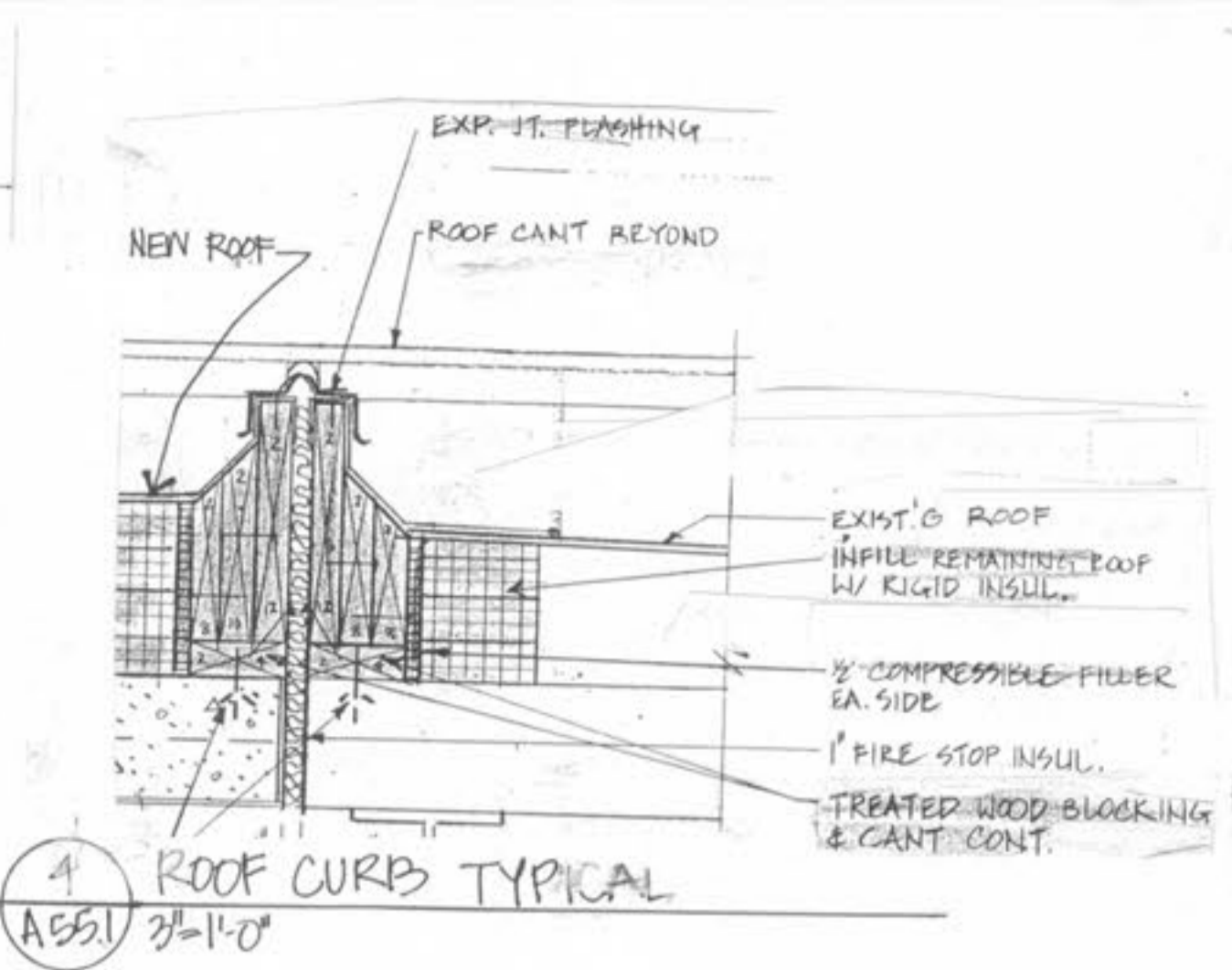
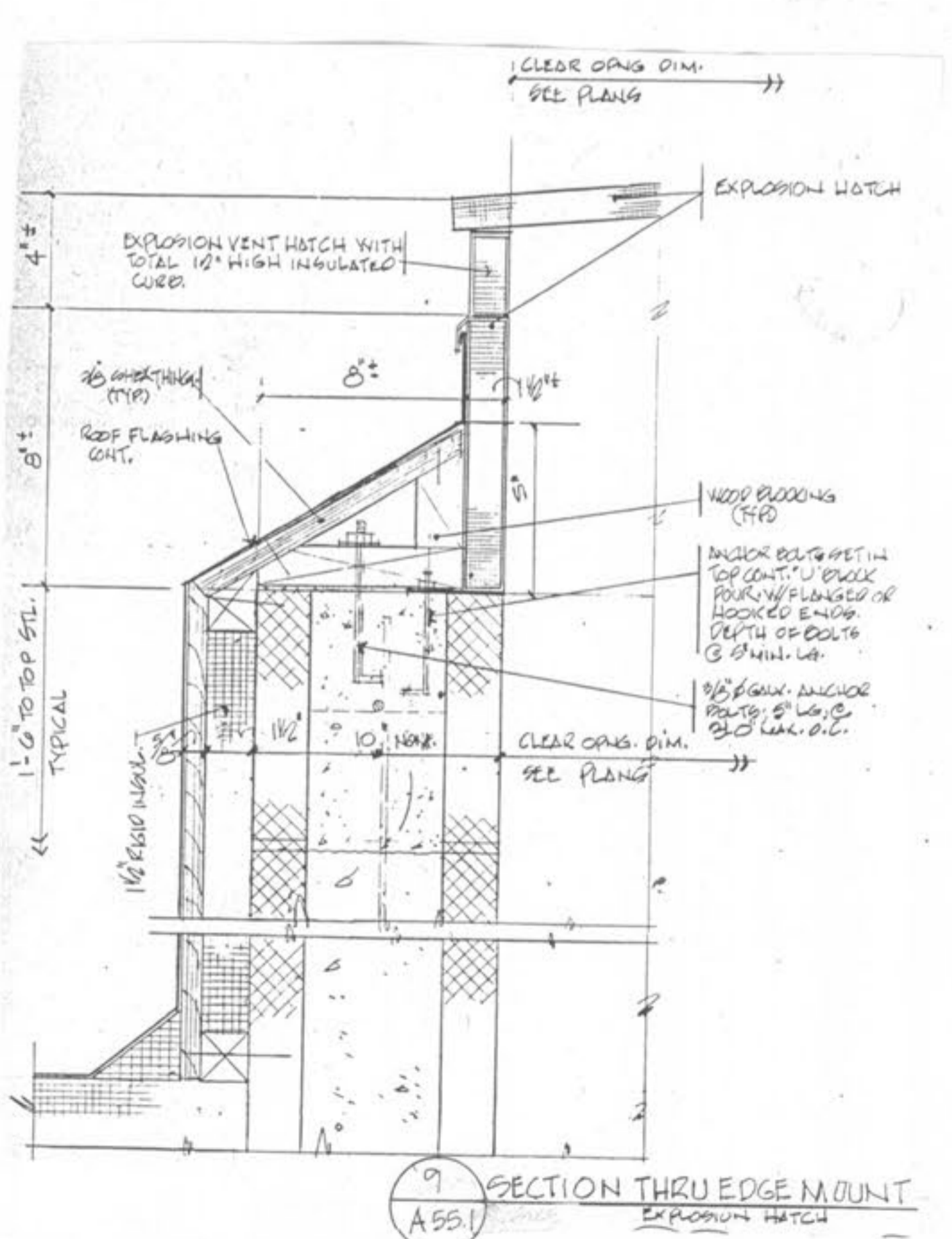


TYPICAL OVERHEAD DOOR DETAILS
SCALE 1/2" = 1'-0"



CRD Campbell, Inc.
Engineers Architects Planners

STATE OF MISSOURI
REGISTERED ARCHITECT
FREDERICK WALLACE HILL
NUMBER A-3405

City of O'Fallon
188 South Main Street
O'Fallon, Missouri 63366

NEW CITY HALL COMPLEX

INTERIOR & MISC. DETAILS
CONSTRUCTION DOCUMENTS

Revisions
CONSTRUCTION ISSUE
DECEMBER 5, 1997

Project No. 96036
Date 9 OCT. 97
Designed
Drawn
Drawing No. A-551

ADDENDUM ISSUE