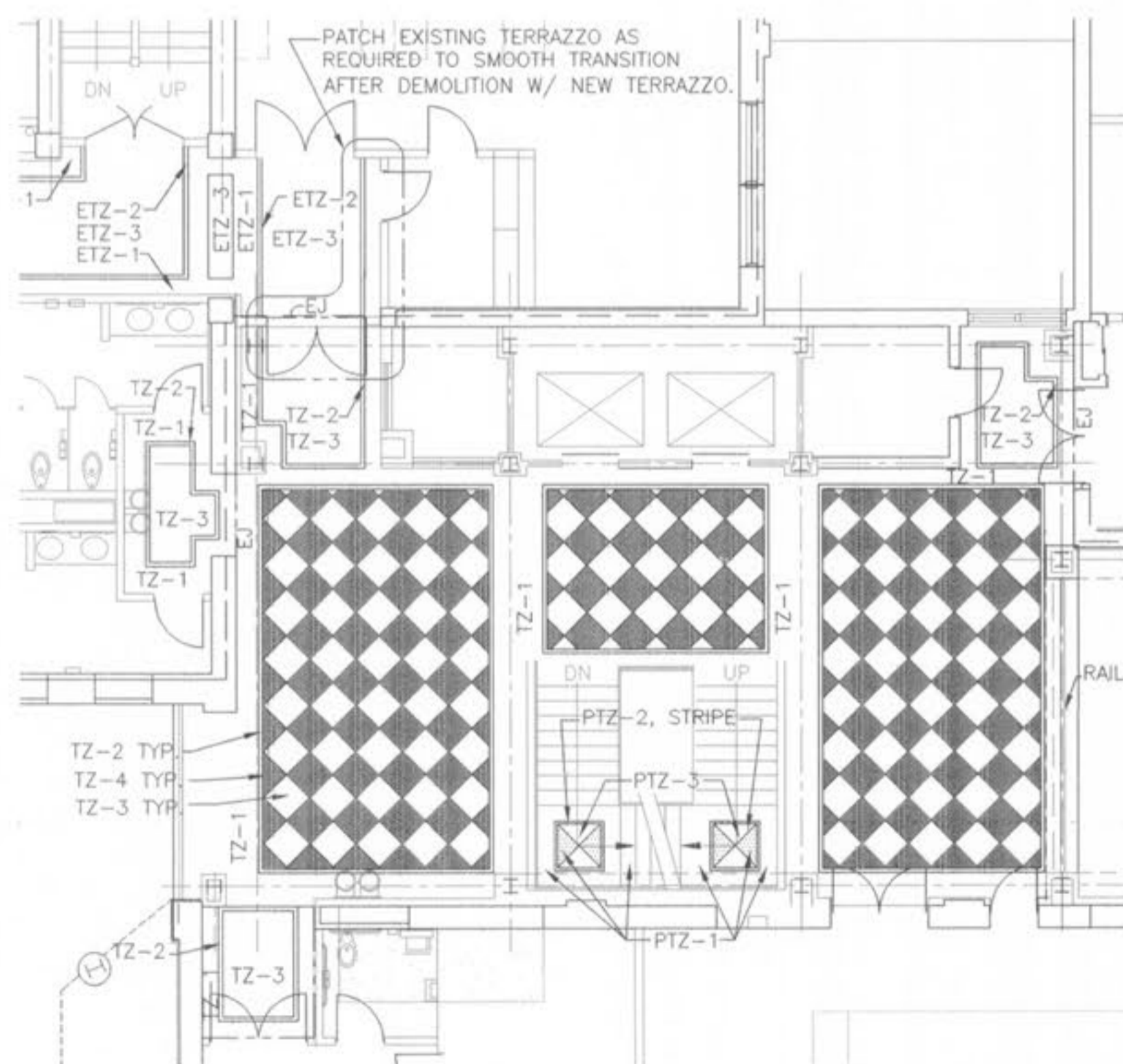
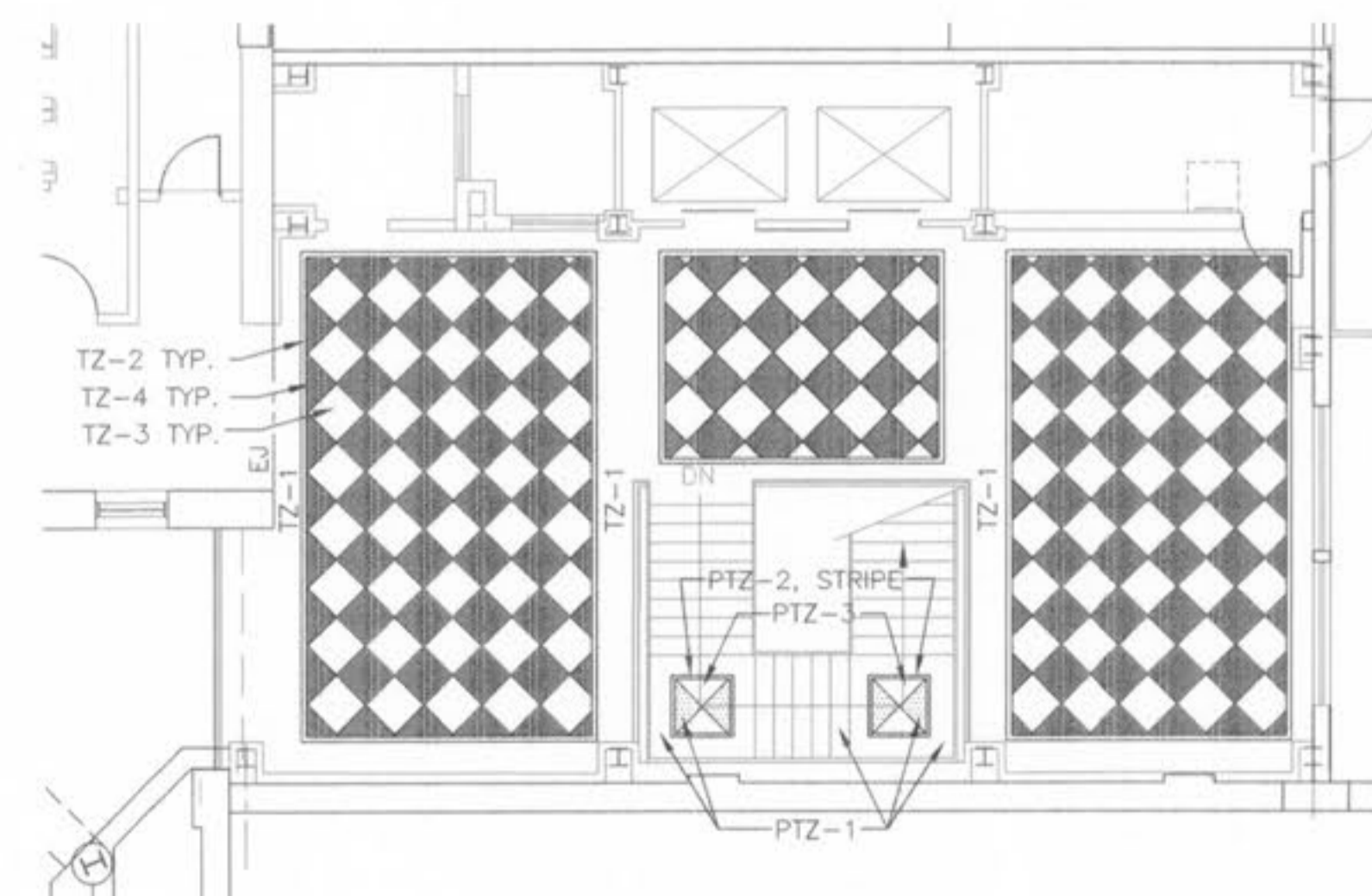


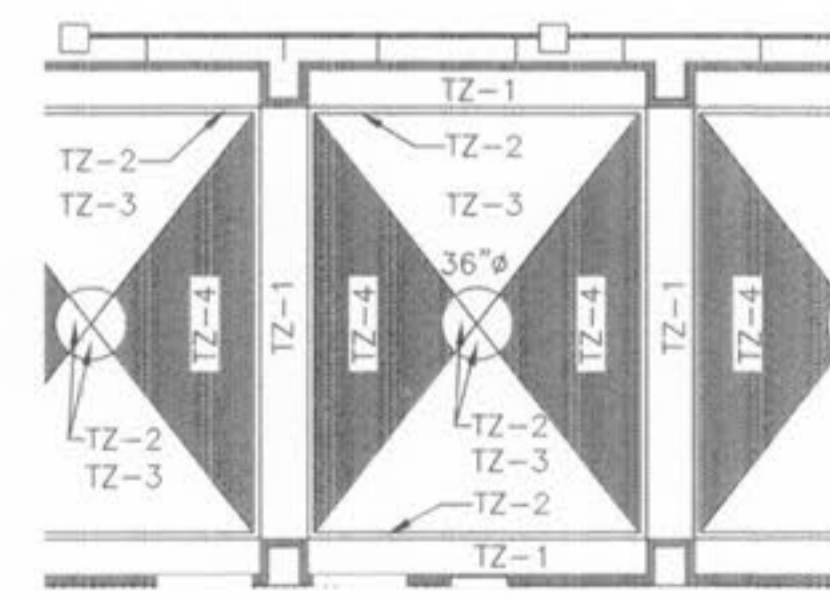
**FIRST FLOOR FINISH PLAN - WEST, CENTRAL, FOOD COURT, AND EAST LOBBY**  
SCALE: 1/8" = 1'-0"



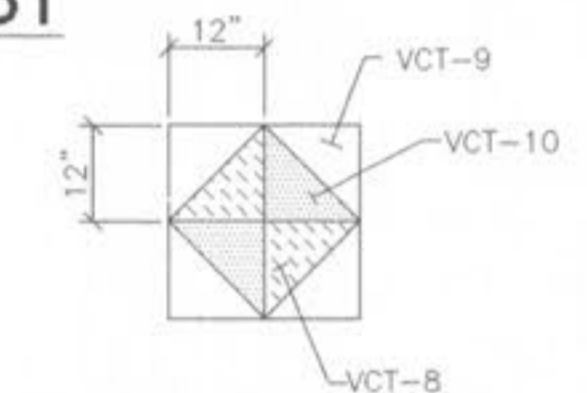
**2ND FLR FINISH PLAN - CENTRAL LOBBY**  
SCALE: 1/8" = 1'-0"



**THIRD FLOOR FINISH PLAN - CENTRAL LOBBY**  
SCALE: 1/8" = 1'-0"



**ALTERNATE FLOOR PATTERN**  
SCALE: 1/8" = 1'-0"



**TILE DETAIL AT VENDING/MICROWAVE**

**TERRAZZO COLOR KEY**

- 1 - BLACK BORDER STRIP (MATCH EXIST.)
- 2 - YELLOW BORDER STRIP (MATCH EXIST.) 3" WIDE (TYP.)
- 3 - GREEN FIELD (MATCH EXIST.)
- 4 - BURGUNDY FIELD (MATCH EXIST.)

1/8" BRONZE SPACER TYP. THROUGHOUT

**TZ-1 BLACK**  
**TZ-2 YELLOW**  
**TZ-3 GREEN**  
**TZ-4 BURGUNDY**

**NOTE:**  
 "E" INDICATES EXISTING TERRAZZO  
 ALLOW FOR SMOOTH SEAMLESS TRANSITIONS  
 "P" INDICATES PRECAST TERRAZZO  
 "R" INDICATES RUSTIC TERRAZZO