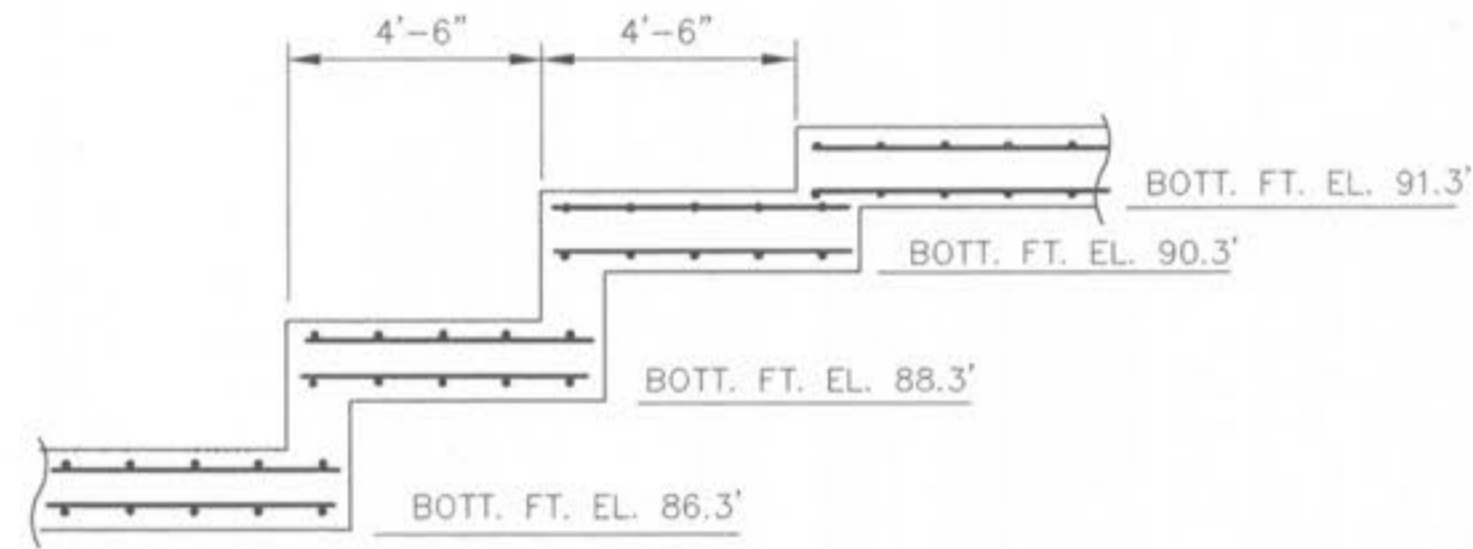


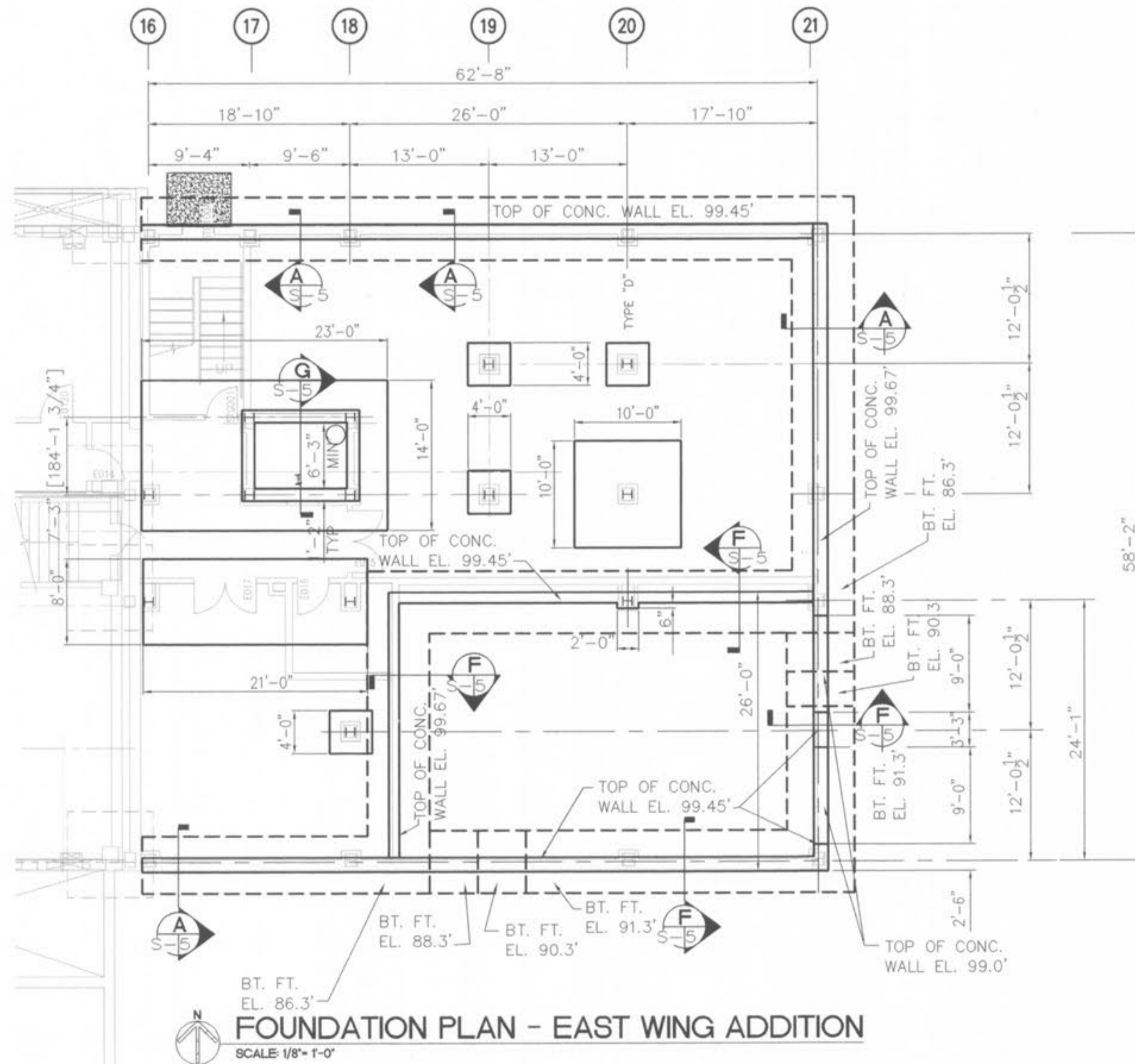
NOTES:

1. ALL REINFORCEMENT LAP SPLICES SHALL BE MADE WITH MINIMUM LENGTHS GIVEN ON SHEET S-1.
2. ALL FOOTINGS SHALL BE 16" THICK AND REINFORCED WITH #6 @ 12" CTS. EW/EF.
3. BOTTOM OF FOOTING EL. 86.3' UNLESS NOTED OTHERWISE ON PLAN



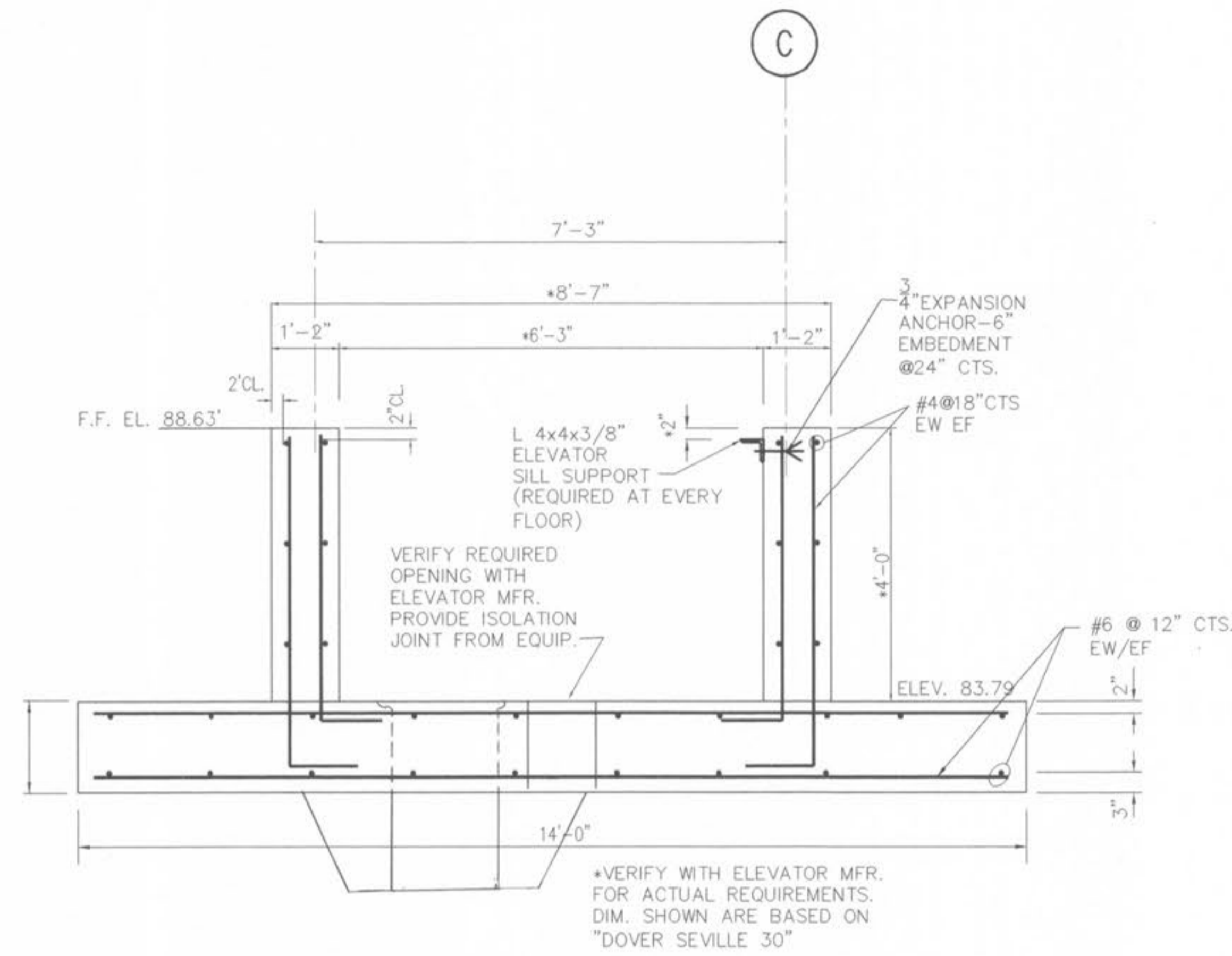
VIEW OF STEP FOOTING-SOUTH WALL

SCALE 1/2" = 1'-0"



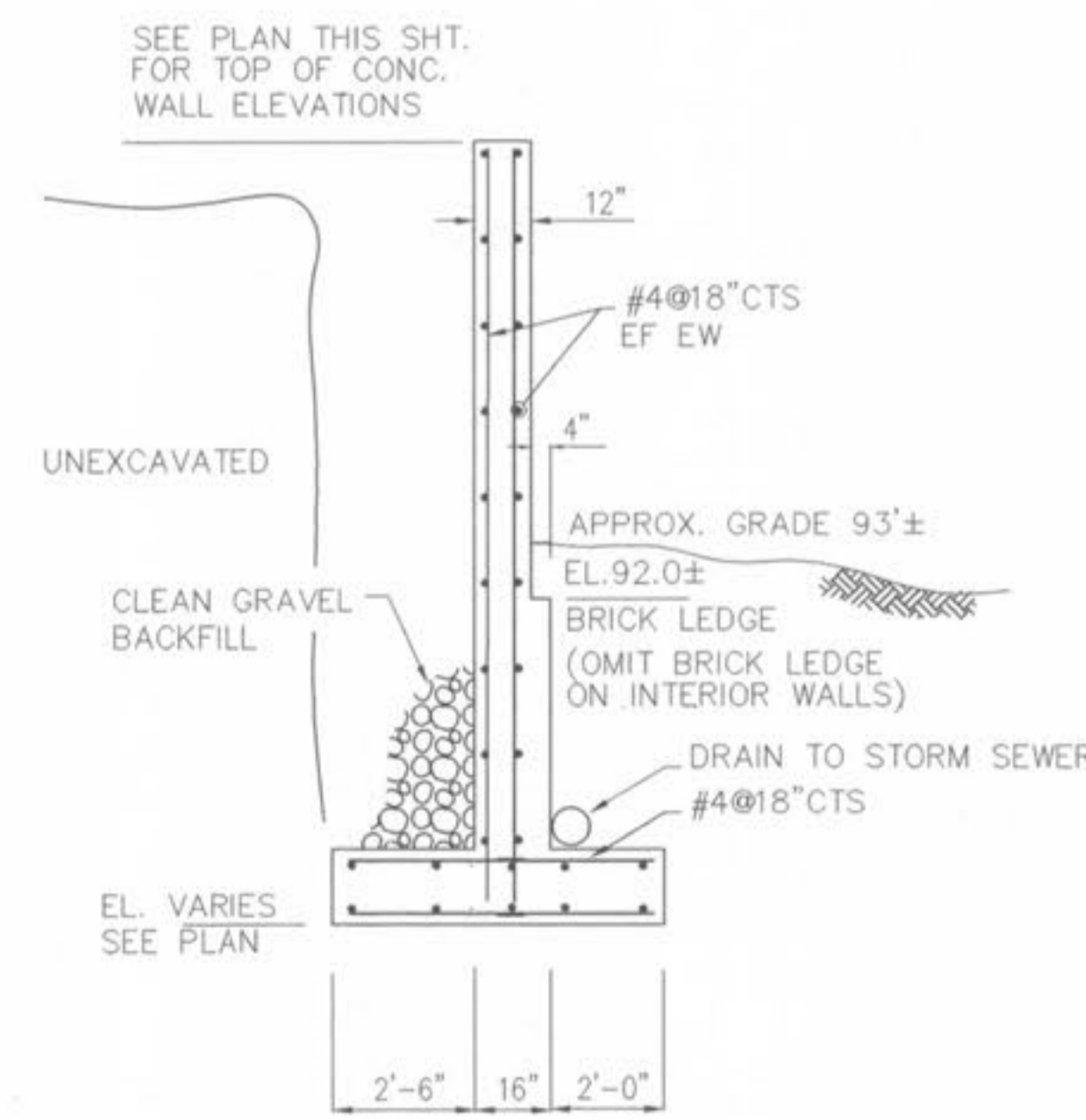
FOUNDATION PLAN - EAST WING ADDITION

SCALE 1/8" = 1'-0"



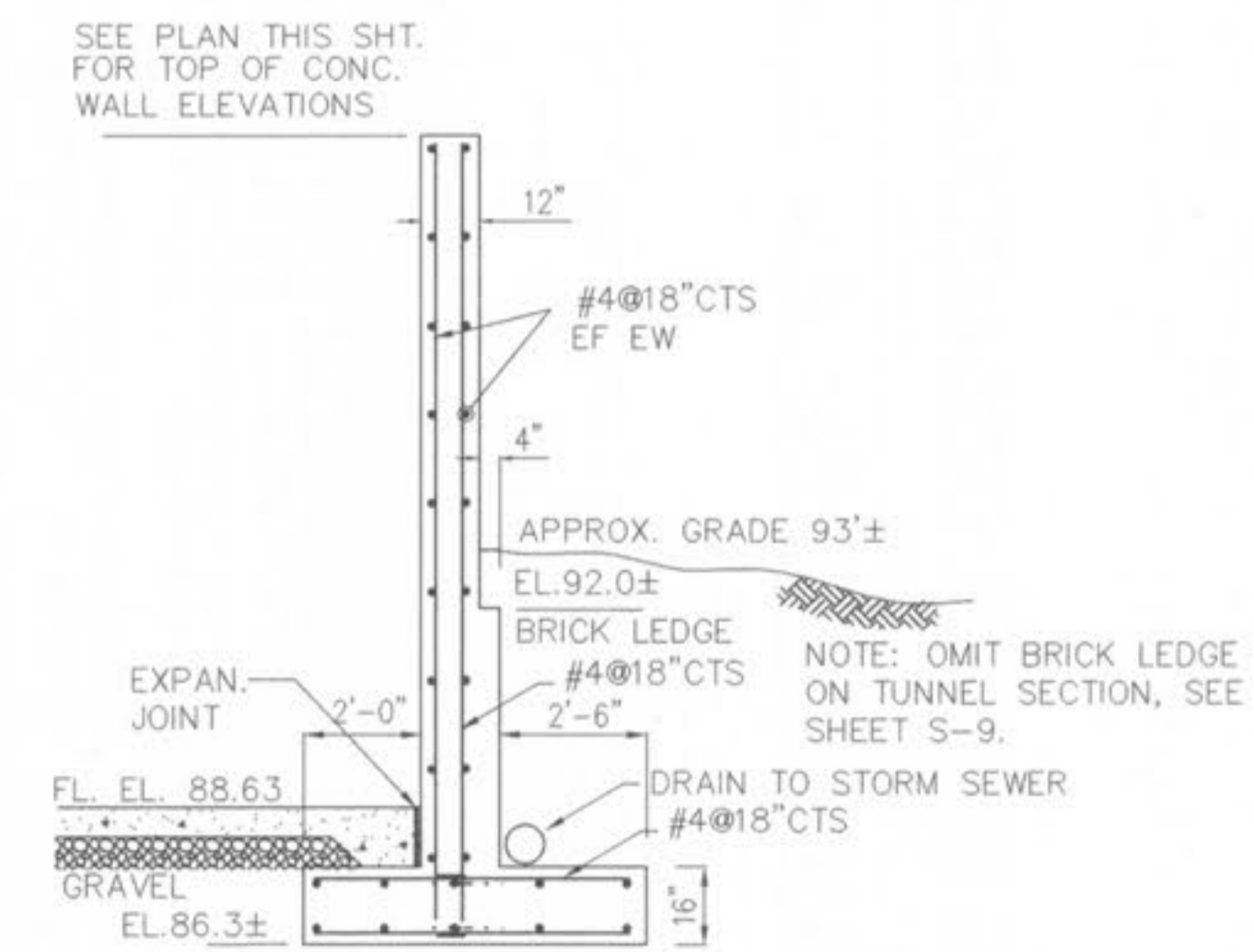
FOUNDATION SECTION - ELEVATOR

N.T.S.



SECTION F

N.T.S.



SECTION A

N.T.S.



Revisions

CONSTRUCTION ISSUE	DECEMBER 5, 1997
CHANGE ORDER NO. 1	JANUARY 27, 1998

Project No.	96036
Date	SEPT. 4, 1997
Designed	SEA
Drawn	GBS
Drawing No.	S-5