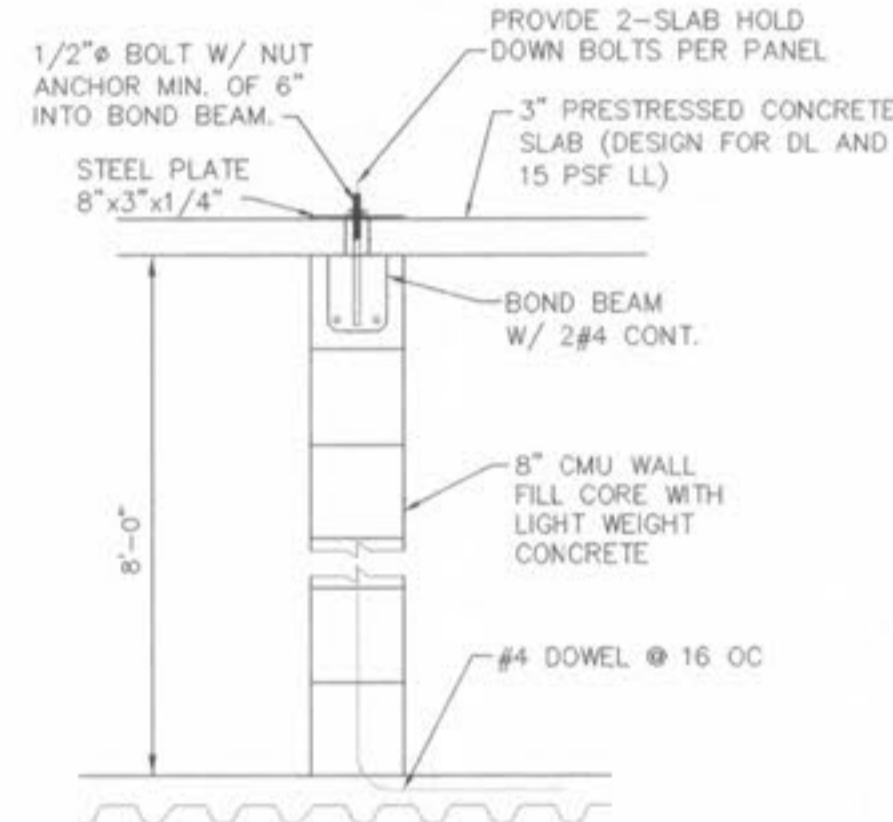
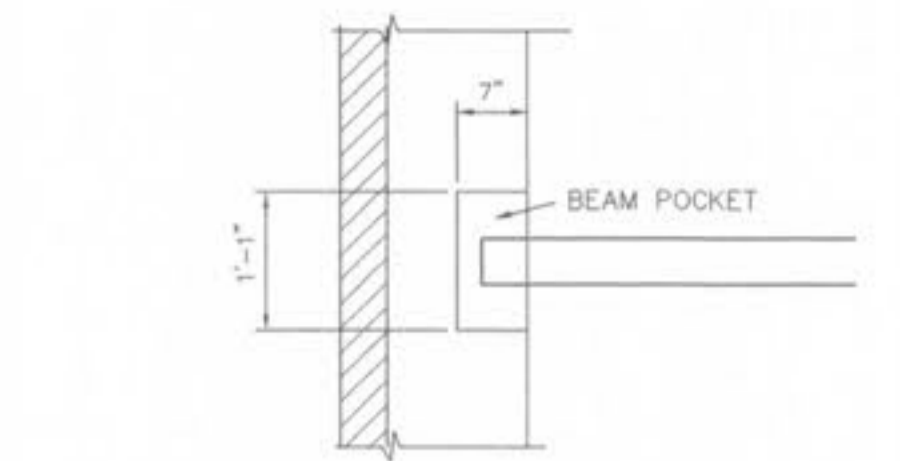




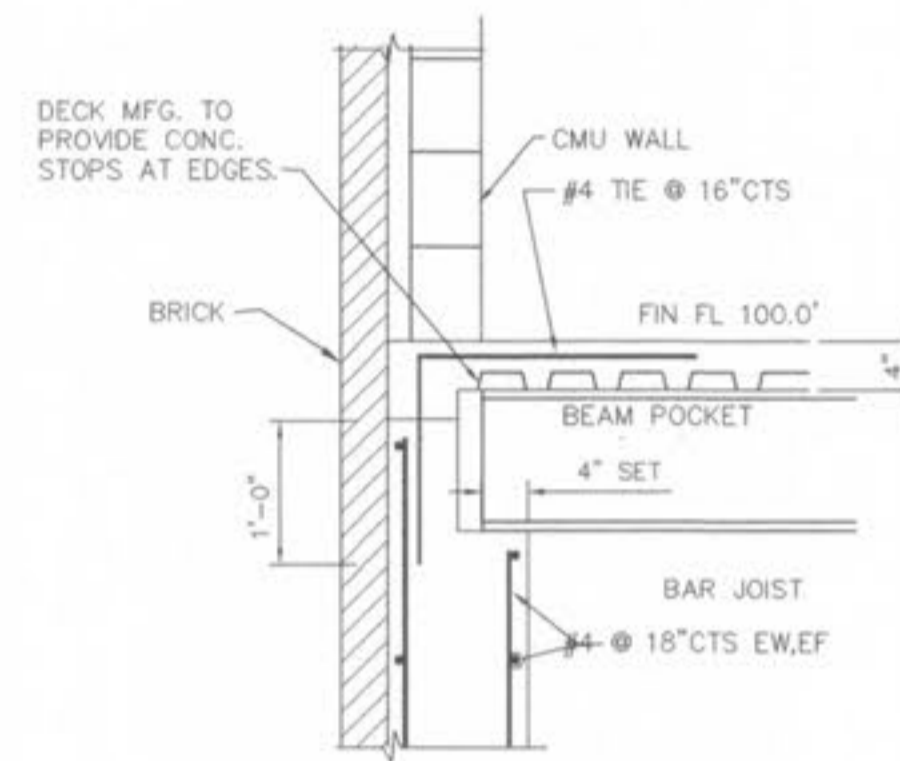
16 17 18 19 20 21



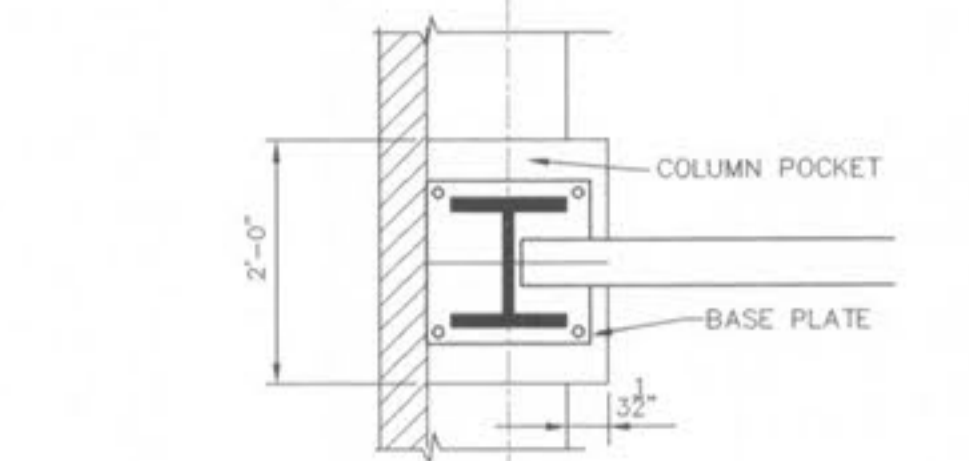
WALL SECTION • JAIL CELLS



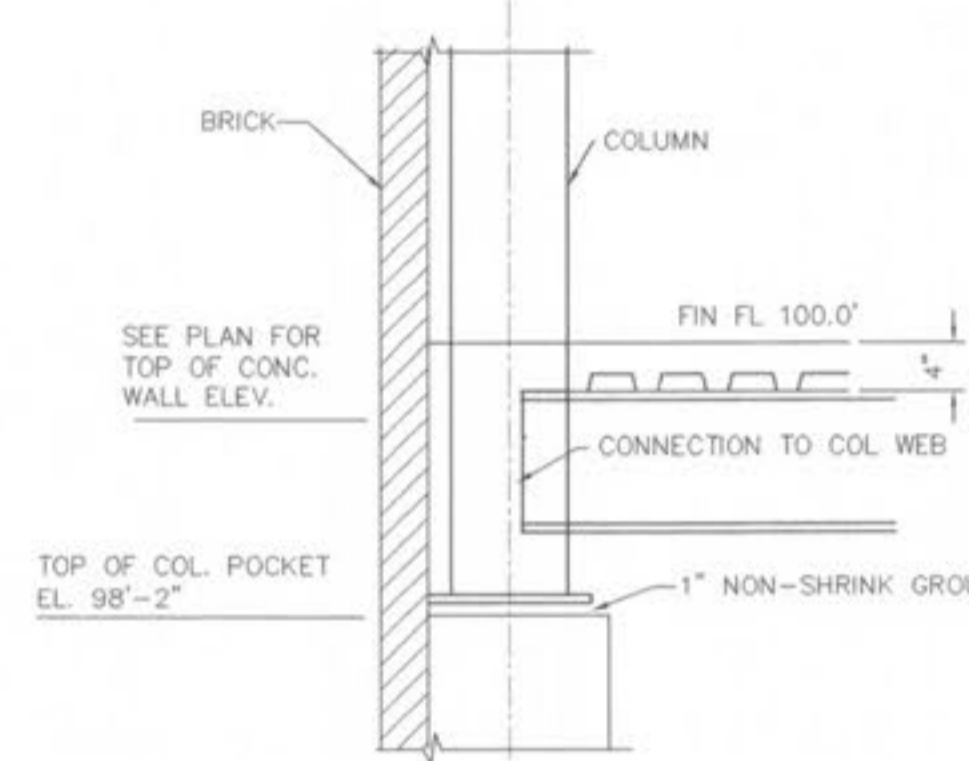
PLAN



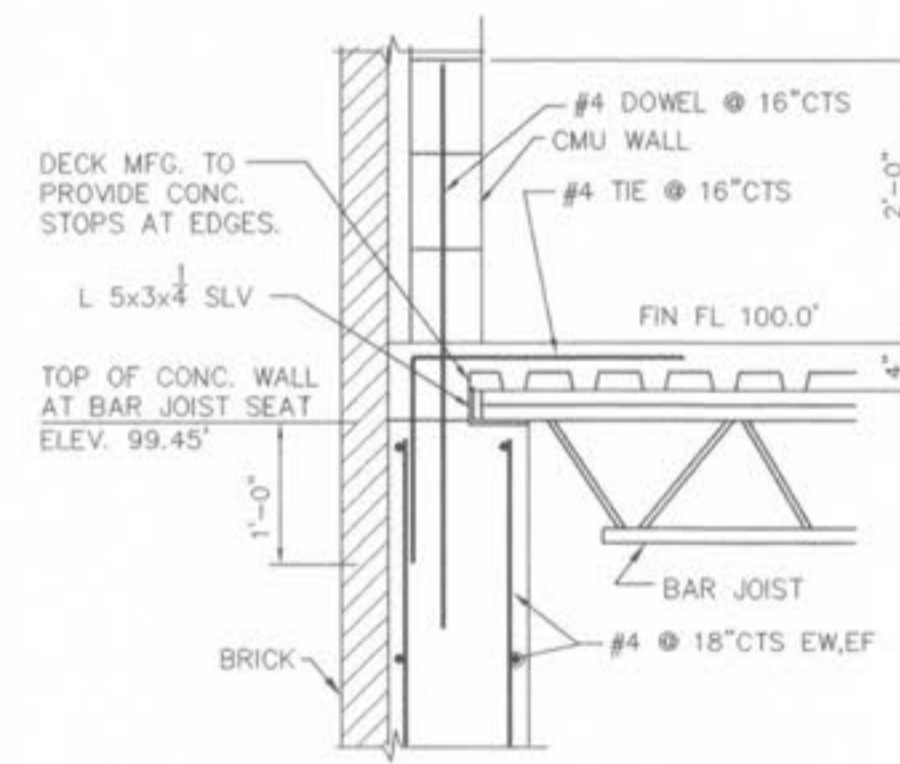
WALL SECTION • BEAM POCKET



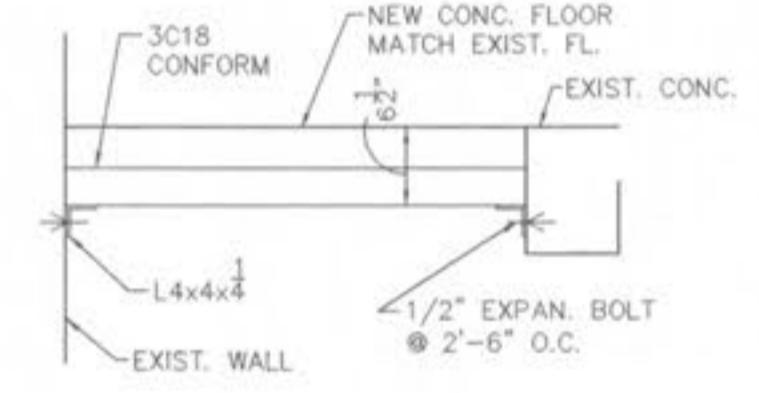
PLAN



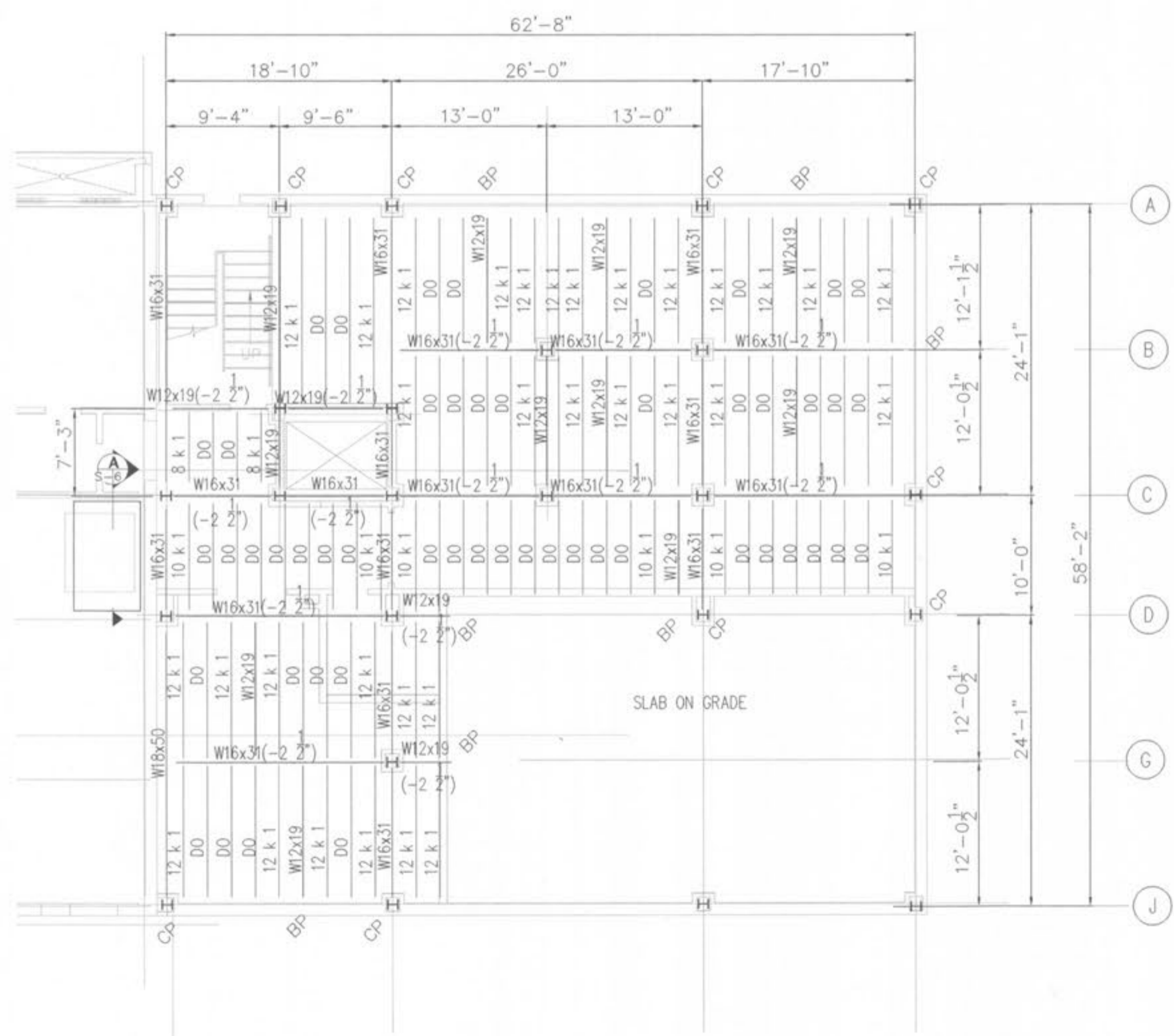
WALL SECTION • COLUMN POCKET



WALL SECTION • BAR JOIST



SECTION 'A'



FIRST FLOOR FRAMING PLAN - EAST WING ADDITION
SCALE: 1/8" = 1'-0"

DESIGN LOADS
DEAD LOAD + 50 LL + 20 PARTITION LOAD.

- NOTES:
- ALL JOIST SPACING 2'-0" NOMINAL
 - TOP OF STEEL ELEVATION 99'-8" UNLESS OTHERWISE NOTED.
 - FLOOR SHALL BE VALCRAFT TYPE 1.5 VL COMPOSITE STEEL FLOOR DECK, WITH AT TOTAL SLAB DEPTH OF 4" OF NORMAL WEIGHT CONCRETE RE-INFORCED WITH 6x6-W1.4xW1.4 WELD-WIRE FABRIC.
 - MOMENT CONNECTION
 - ALL COLUMNS SHALL BE W10x54

CONSTRUCTION DOCUMENTS

Revisions
CONSTRUCTION ISSUE
DECEMBER 5, 1997
CHANGE ORDER NO. 1
JANUARY 27, 1998

Project No.	96036
Date	SEPT. 4, 1997
Designed	SEA
Drawn	GBS
Drawing No.	S-6