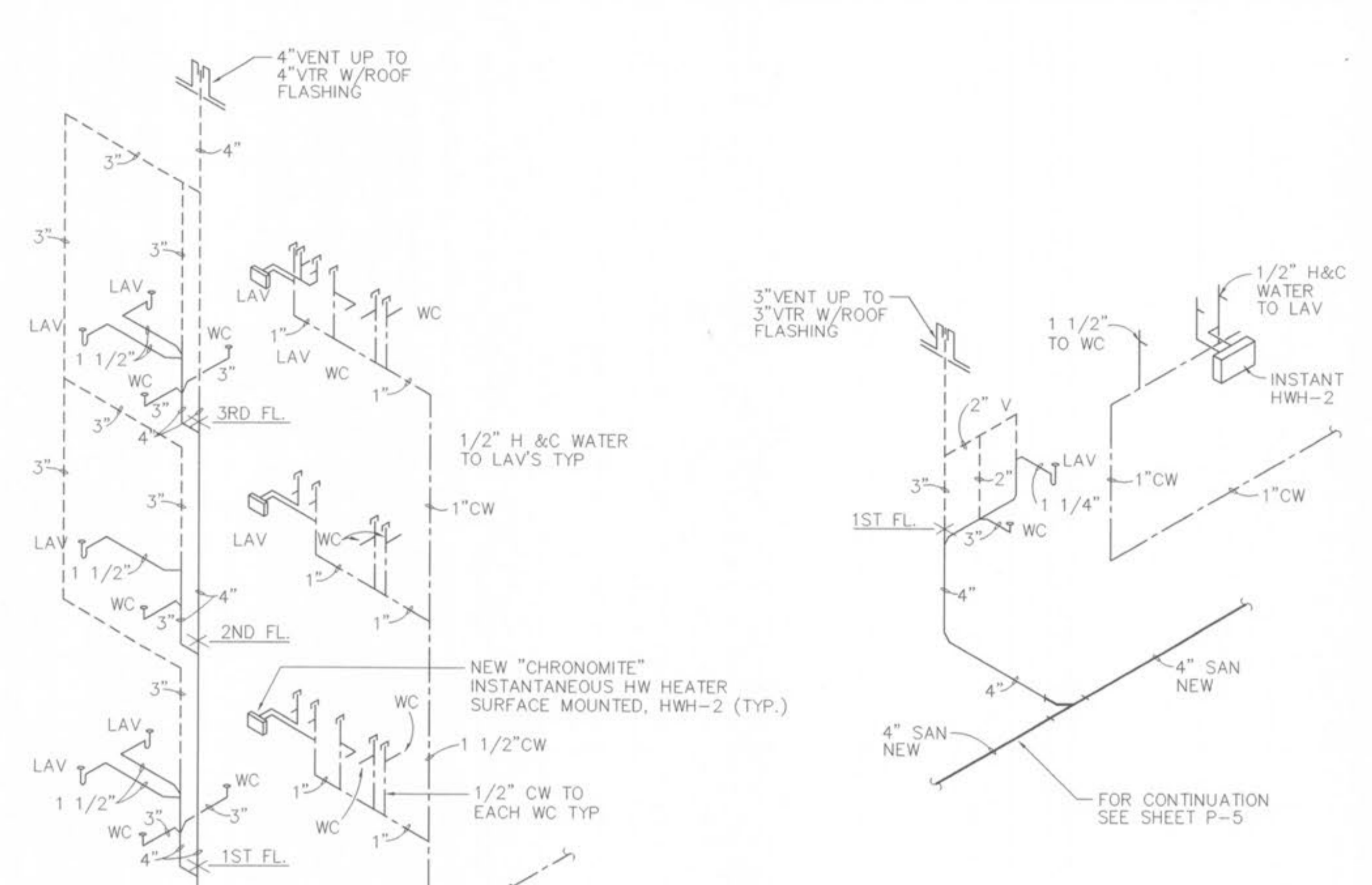


P 1-K WEST WING
DWV AND WATER ISOMETRIC

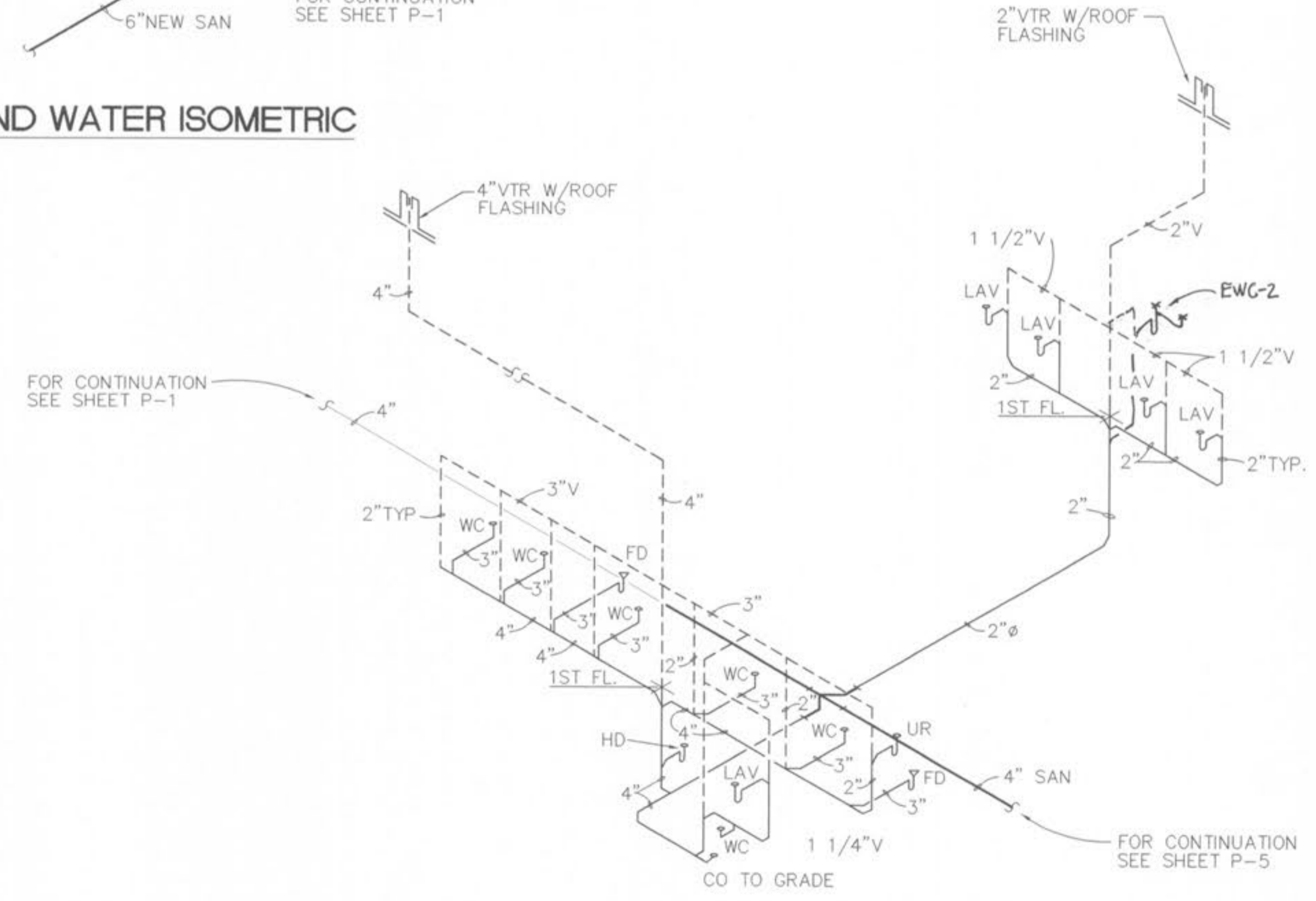
P 1-B WEST WING
DWV ISOMETRIC

- GENERAL NOTES:
- CONCEAL ALL DRAIN WASTE VENT AND WATER PIPING IN WALLS, SOFFITS OR PLUMBING CHASES. EXPOSED PIPING ONLY WHERE REQUIRED FOR FIXTURE CONNECTIONS.
 - PROVIDE CLEANOUTS IN SOIL STACKS WHERE PRACTICAL. FURNISH WALL CAPS WITH FINISH SELECTED BY THE ARCHITECT. FLOOR CLEANOUTS SHALL BE LOCATED IN TILED AREAS, NOT UNDER CARPETED AREAS. CLEANOUTS SHALL BE LABELED.
 - SIZE TRAPS, VENTS AND LATERALS IN COMPLIANCE WITH LOCAL CODES.
 - 1. COLD WATER TO EACH TANK TYPE WATER CLOSET.
 - 2. COLD WATER TO EACH FLUSH VALVE. FOR URINAL OR WATER CLOSET.
 - 3. HOT AND COLD WATER TO EACH ANTI-SCALD SHOWER MIXING VALVE. EACH SHOWER TO HAVE AN ANTI-SCALD STOP.
 - 4. HOT AND COLD WATER TO EACH LAVATORY OR SINK.



P 1-C SOUTH WING
DWV AND WATER ISOMETRIC

P 1-A WEST WING
DWV AND WATER ISOMETRIC



P 1-D SOUTH WING
DWV AND WATER ISOMETRIC

CONSTRUCTION DOCUMENTS



Revisions
CONSTRUCTION ISSUE
DECEMBER 5, 1997