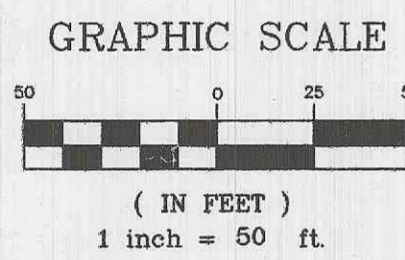
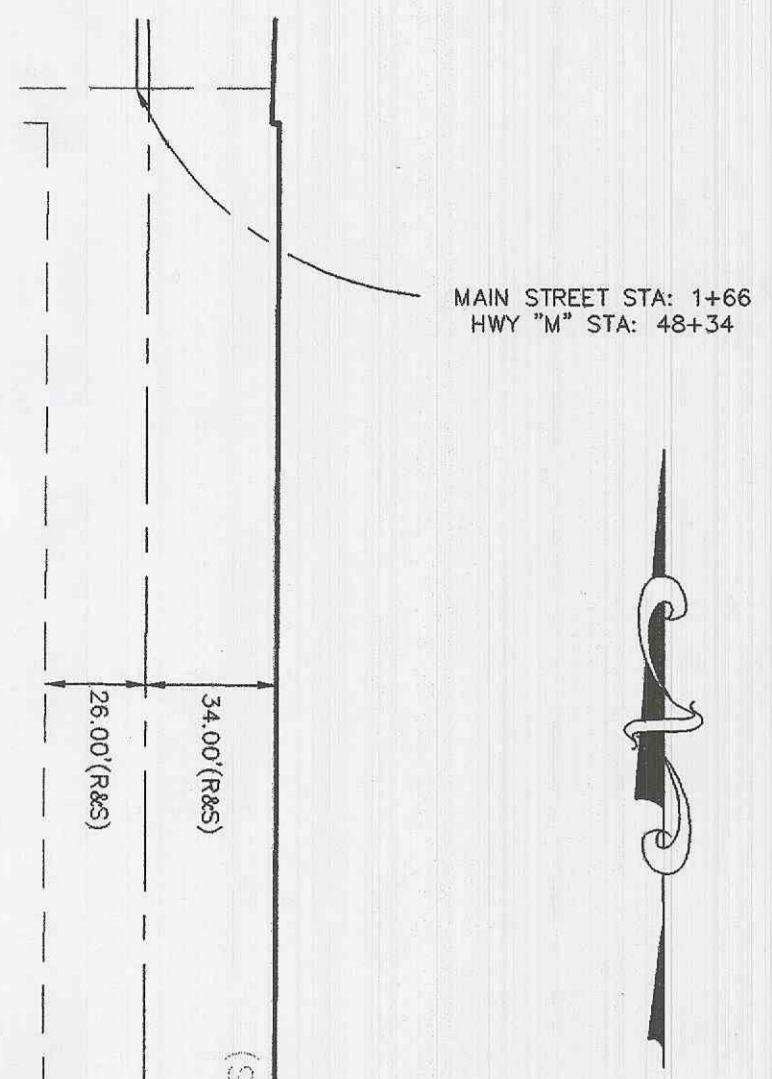
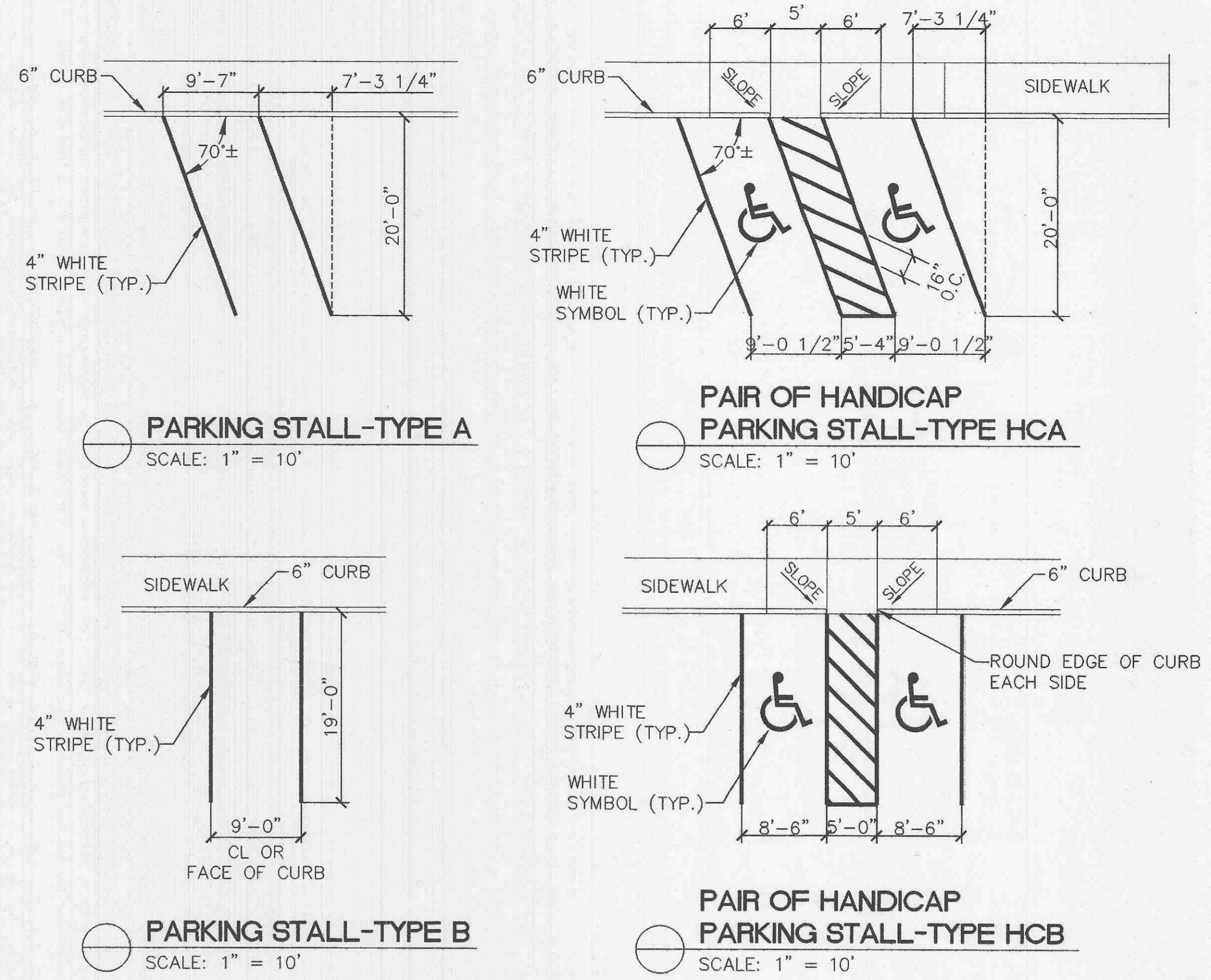
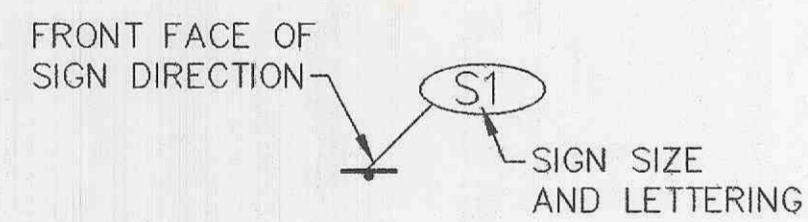


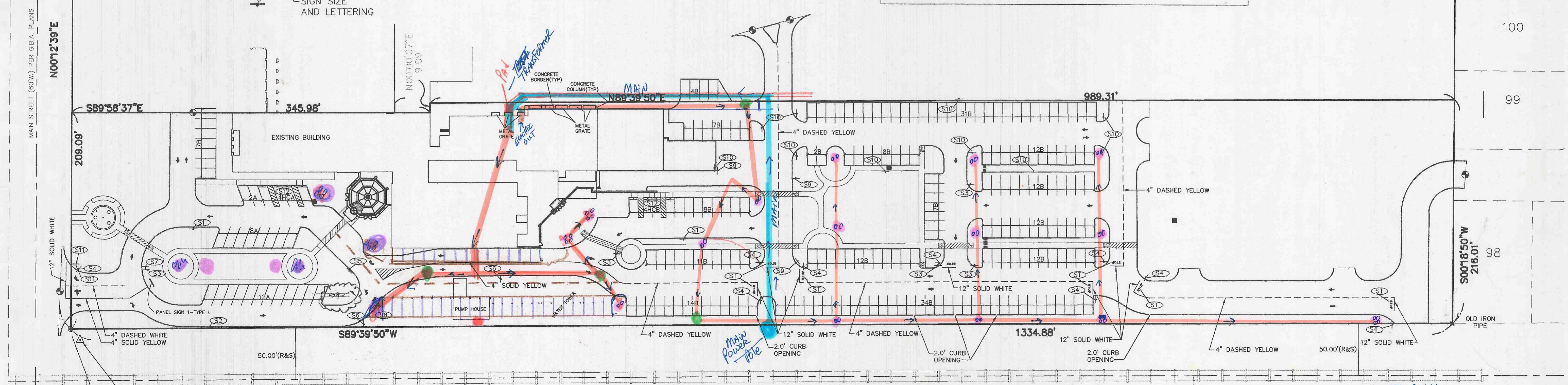
A TRACT OF LAND BEING PART OF
SECTION 21, TOWNSHIP 47 NORTH, RANGE 3 EAST,
OF THE FIFTH PRINCIPAL MERIDIAN,
ST. CHARLES COUNTY, MISSOURI



1. THE UNDERGROUND UTILITIES SHOWN HEREON WERE PLOTTED FROM BASE MAPS SUPPLIED TO BAX FROM THE RESPECTIVE UTILITY COMPANIES SERVING THIS SITE AND SHOULD BE VERIFIED BEFORE ANY DESIGN OR CONSTRUCTION BEGINS.
2. FOR PARKING STRIPING DIMENSIONS SEE DETAILS, THIS SHEET.
3. FOR SIGNS AND PAVEMENT MARKINGS DETAILS, SEE SHEET C-4.



215 PARKING SPACES PLUS 8 HANDICAP SPACES = 223 TOTAL SPACES.



Please Return TO Rod SAKSON OR Facilities Maintenance

- MAIN Electrical service TO Building
- Light standards
- Power Feed to Poles
- Junction Boxes

107
106
105
104
103
102
101
100
99
98