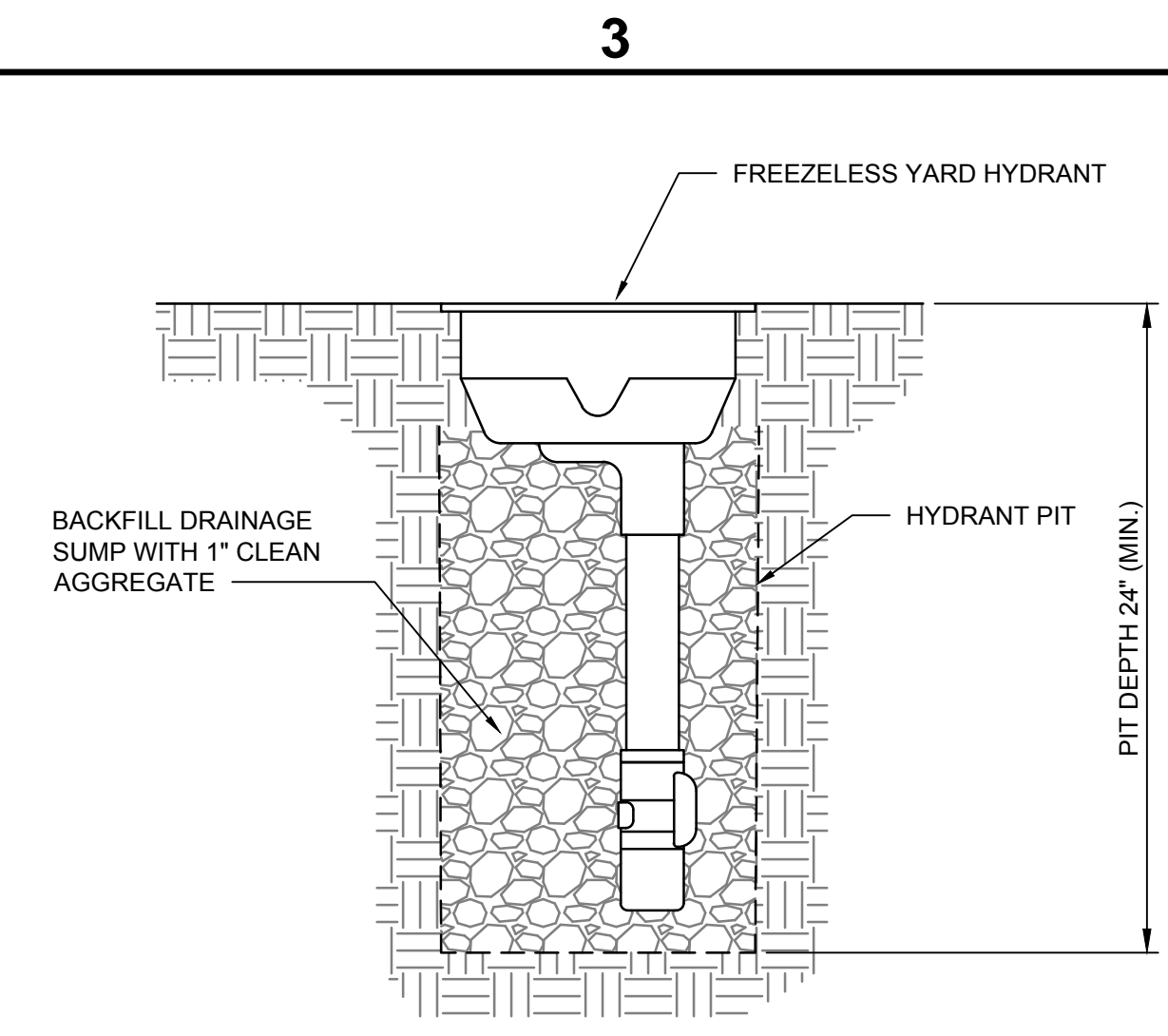


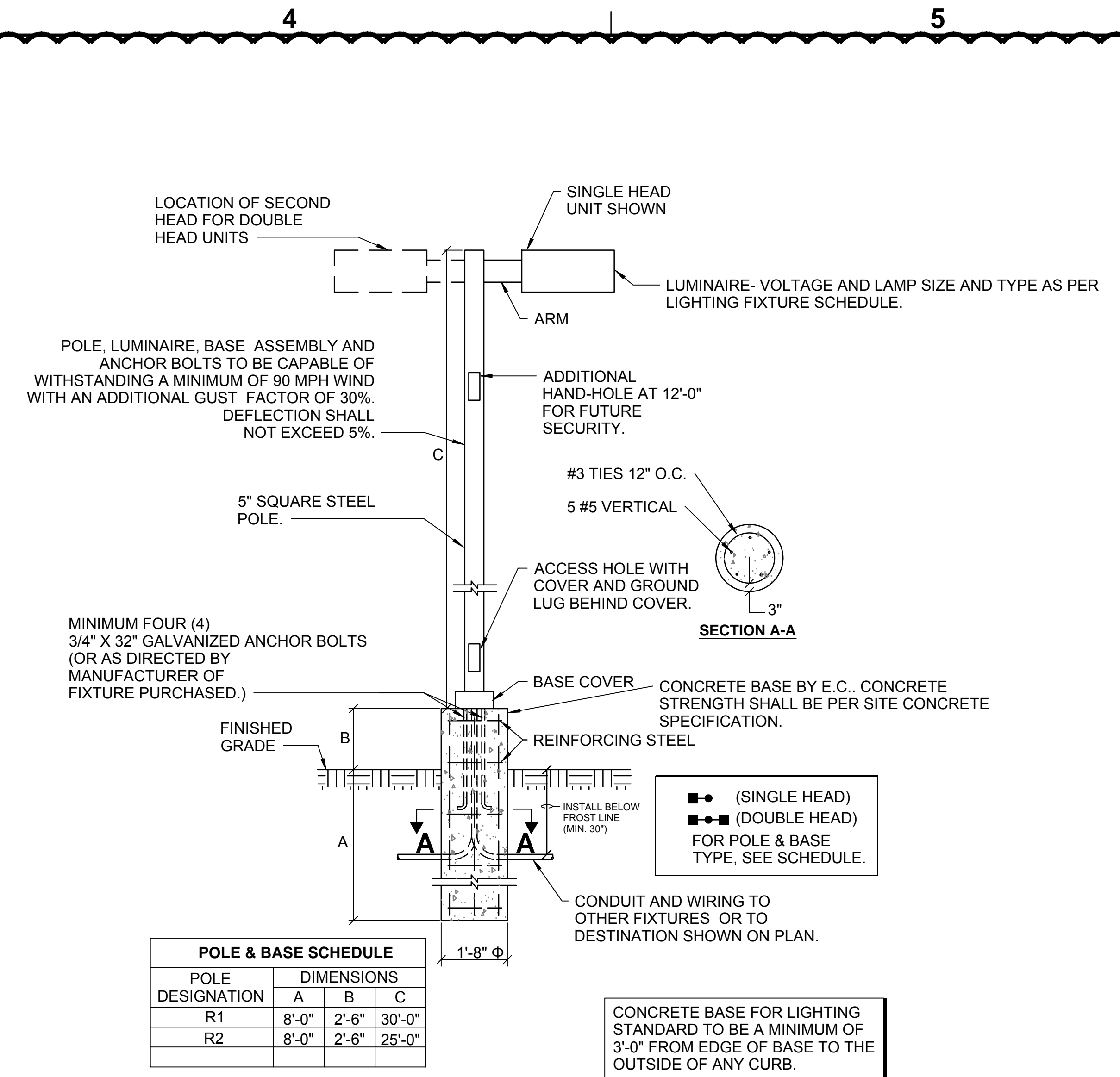
DOMESTIC SERVICE	BYPASS SIZE	MIN. SIZE	FIRE SERVICE														
			10"				8"				6"				4"		
IN.	IN.	IN.	IN.	IN.	IN.	IN.	IN.	IN.	IN.	IN.	IN.	IN.	IN.	IN.	IN.	IN.	IN.
1 1/2	1	30	48	35	72	102	35	72	90	30	66	84	27	60	84		
2	2	30	48	35	72	102	35	72	90	30	66	84	27	60	84		
3	2	54	48	35	84	156	35	78	156	30	72	150	27	72	150		
4	2	54	48	35	84	162	35	84	162	30	78	156	27	72	156		
6	2	60	48	36	84	174	36	84	174	31	78	174					
8	2	66	48	37	84	186	37	84	186								

- VAULT WALLS AND ROOF TO BE OF CONCRETE.
- LIDS AND FRAMES OF OPENING TO BE SET IN PLACE NOT IN CONCRETE.
- VALVES ON EACH SIDE OF GENERAL METER FOR 1 1/2" OR 2" SERVICE TO HAVE SCREW ENDS, I.P. THREADS; FOR 3" AND ABOVE, VALVES MUST HAVE FLANGED ENDS AND BE IN ALIGNMENT. ALL VALVES MUST BE ADEQUATELY SECURED TO WITHSTAND WATER THRUST WITH METER REMOVED.
- MINIMUM CLEARANCE OF 6" TO BE PROVIDED BETWEEN THE EDGE AND GENERAL METER AND THE EDGE AND DETECTOR CHECK BYPASS METER.
- DRAINAGE FACILITIES MUST BE PROVIDED, OR BOX OTHERWISE KEPT FREE OF WATER. NO FRENCH DRAINS ALLOWED UNLESS APPROVED BY AUTHORIZED COMPANY REPRESENTATIVE.
- DIPRESSURE CLASS 350 PIPE MINIMUM, EXTENDED MIN. 6" FROM OUTLET SIDE OF METER PIT.
- TYPE "K" OR "L" COPPER ON DOMESTIC. EXTENDED MIN. 6" FROM OUTLET SIDE OF METER PIT.
- ANY DEVIATION FROM PIPE DEPTH SHOWN MUST BE APPROVED BY AUTHORIZED COMPANY REPRESENTATIVE PRIOR TO CONSTRUCTION.
- METER BOX CONTROL VALVE TO BE LOCATED AS NEAR TO METER BOX AS PRACTICAL.
- BOX TO BE SET WITH TOP OF BOX AT FINISHED GRADE WITH NO EXTENSION ALLOWED.
- CONNECTIONS TO PUBLIC WATER MAIN WILL NOT BE MADE BEFORE METER PIT AND PIPING ARE COMPLETE AND PROPERTY LINE VALVE INSTALLED UNLESS APPROVED BY AUTHORIZED MISSOURI AMERICAN WATER COMPANY REPRESENTATIVE.
- CUSTOMER SERVICE SUPERINTENDENT MUST APPROVE ALL MEGALUGS, UNIFLANGE TYPE JOINTS IN METERBOX.
- LIDS SHALL BE MADE OF ALUMINUM AND SPRING LOADED. OPENING SHALL BE 48"x48" TO ALLOW UNRESTRICTED ACCESS. OPENING TO BE FLUSH WITH OUTLET SIDE OF DOMESTIC WATER SERVICE VALVE FLANGE.
- MAIN OR SUMP PUMP NEEDS TO BE GRADED TO ALLOW WATER DRAINAGE AWAY AND OUT FROM VAULT.

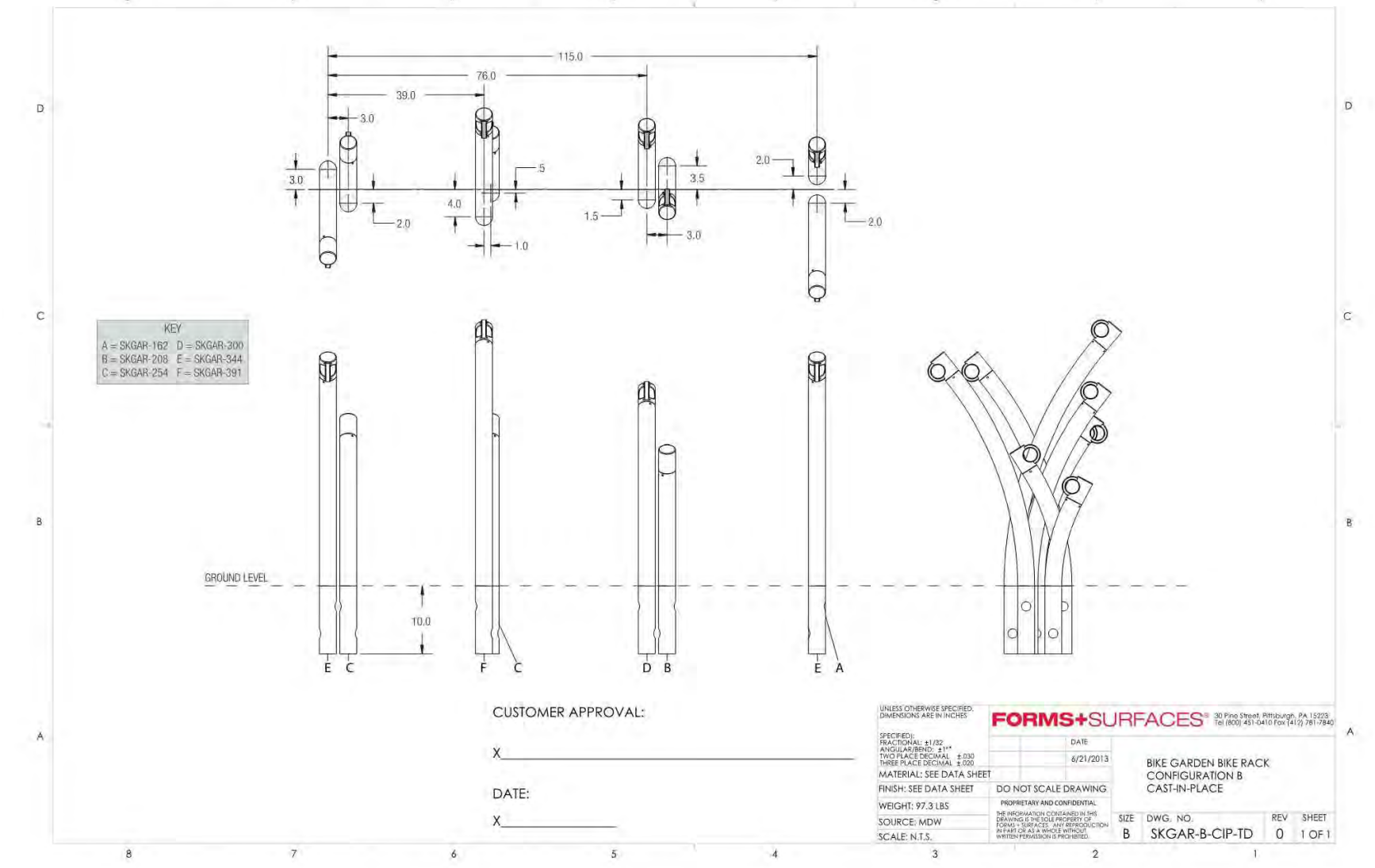
11 PROJECT SPECIFIC METER BOX FOR SPLIT SERVICE
SCALE: N.T.S.



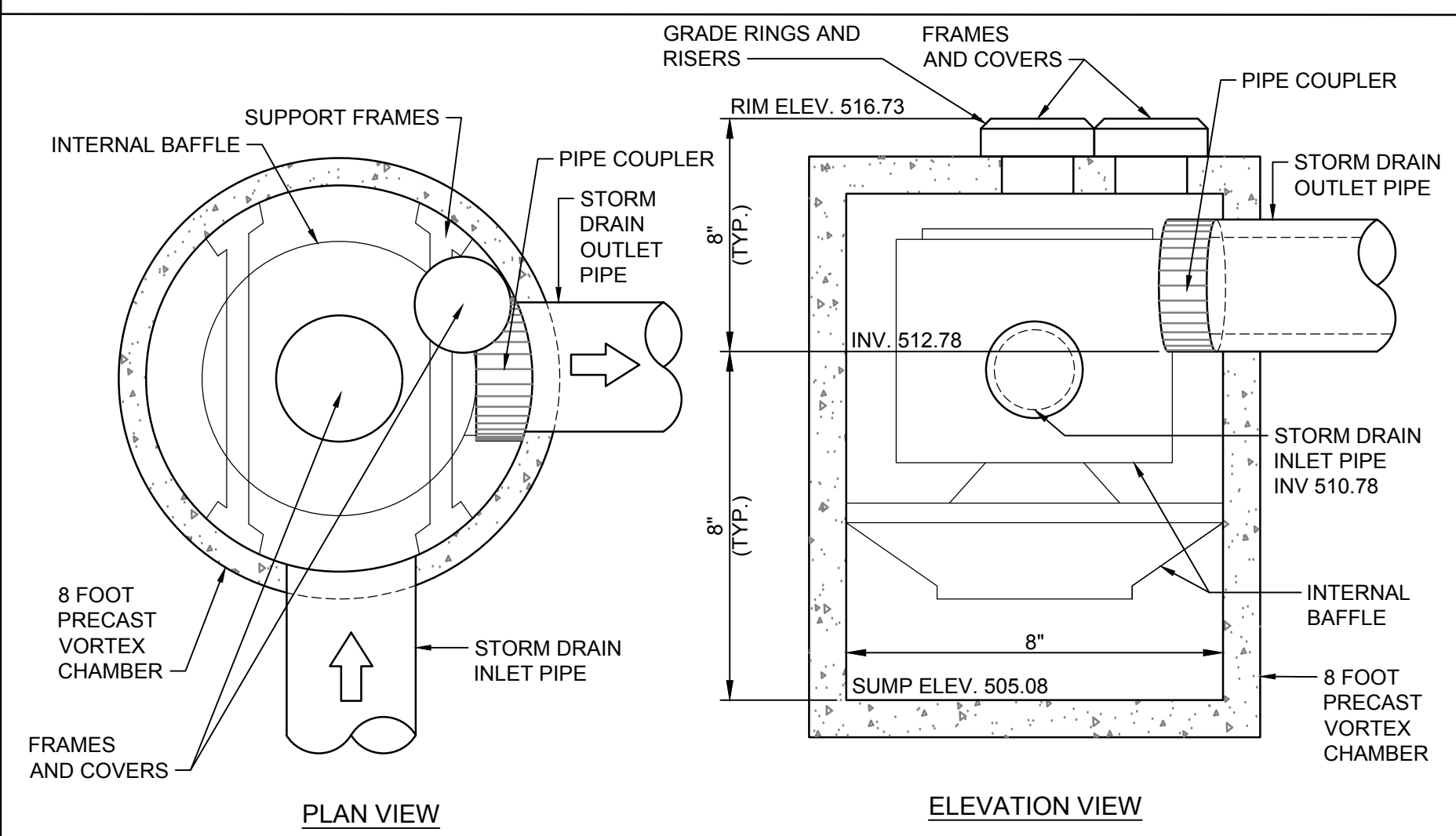
3 PROJECT SPECIFIC YARD HYDRANT DRAIN SUMP
SCALE: N.T.S.



9 PROJECT SPECIFIC LIGHT DETAIL
SCALE: N.T.S.



14 PROJECT SPECIFIC BIKE RACK
SCALE: N.T.S.



19 PROJECT SPECIFIC DOWNSTREAM DEFENDER
SCALE: N.T.S.

- NOTES:
- THIS IS A STANDARD DETAIL AND IS NOT SITE SPECIFIC.
 - REFER TO SUBMITTAL OR FABRICATION DRAWINGS FOR FINAL RIM AND INVERT ELEVATIONS. NOTE: ELEVATION OF INLET INVERT IS ONE PIPE DIAMETER LOWER THAN THE OUTLET INVERT.
 - CONTACT HYDRO INTERNATIONAL FOR SITE SPECIFIC DRAWINGS.
 - THE TREATMENT SYSTEM SHALL USE AN INDUCED VORTEX TO SEPARATE POLLUTANTS FROM STORMWATER RUNOFF.
 - THE TREATMENT SYSTEM SHALL REMOVE 80% OR GREATER OF TSS AT THE WQF.
 - THE TREATMENT SYSTEM SHALL TREAT ALL FLOWS UP TO PTFR WITHOUT BYPASS OR LOSS OF STORED POLLUTANTS.
 - THE MAX. HEADLOSS SHALL NOT BE EXCEEDED AT PTFR WITH MAX. INLET PIPE DIAMETER.
 - AN ACCEPTABLE PIPE COUPLER SHALL BE USED TO CONNECT TO DOWNSTREAM DEFENDER'S INTERNAL OUTLET STUB TO THE STORMDRAIN.
 - THE DIAMETER OF THE DOWNSTREAM DEFENDER'S OUTLET STUB IS NOT ADJUSTABLE. ANY REDUCERS REQUIRED TO MATCH DIFFERENT STORMDRAIN DIAMETER MUST OCCUR OUTSIDE THE VORTEX CHAMBER.
 - THE INLET PIPE DIAMETER MUST NOT BE LARGER THAN THE OUTLET PIPE.
 - THE TANGENTIAL INLET PIPE ANGLE IS NOT SITE SPECIFIC. REFER TO PROJECT PLANS AND FABRICATION DRAWINGS.

K:\FALLON\MO\MO\160194_SFS OF FALLON CIVIC PARK\08 CAD\07 CIVIL\01 - CIVIL SITE DETAILS.DWG
© 2017 1:46:42 PM

sfs architecture
2100 Central St. Suite 317, Kansas City, MO 64108
P: 816.454.8898 F: 816.454.8899

KdG
Kuhlmann design Group, Inc.
66 Progress Parkway - St. Louis, Missouri 63043
P: 314.434.8898 F: 314.434.8280 - kdginc.com

ANTHONY JAMES GIRONDO III
PE-200431087
Professional Engineer
Missouri

CIVIC PARK IMPROVEMENTS

O'Fallon Parks and Rec
Civic Park, O'Fallon,
Missouri

MARK	DATE	DESCRIPTION
Δ	8/15/2017	ADDENDUM #3

SFS PROJECT NO: 1682
ISSUED FOR: CONSTRUCTION DOCUMENTS
ISSUE DATE: 07/27/2017
© 2017 SFS ARCHITECTURE

CIVIL SITE DETAILS

C4-08