

BMP NOTE TO CONTRACTOR:
 ROCK APRONS, BIOSWALES AND BIORETENTION BASINS ARE NOT TO BE CONSTRUCTED UNTIL THE AREAS TRIBUTARY TO THEM HAVE RECEIVED FINAL STABILIZATION.

POTENTIAL POLLUTANTS
 THE POTENTIAL POLLUTANTS INCLUDE: SOLID WASTE, OIL, GREASE, GASOLINE, DIESEL FUEL, CONCRETE WASH-DOWN, SEDIMENT, NITROGEN, PHOSPHORUS, POTASSIUM, AND SCRAP BUILDING MATERIALS.

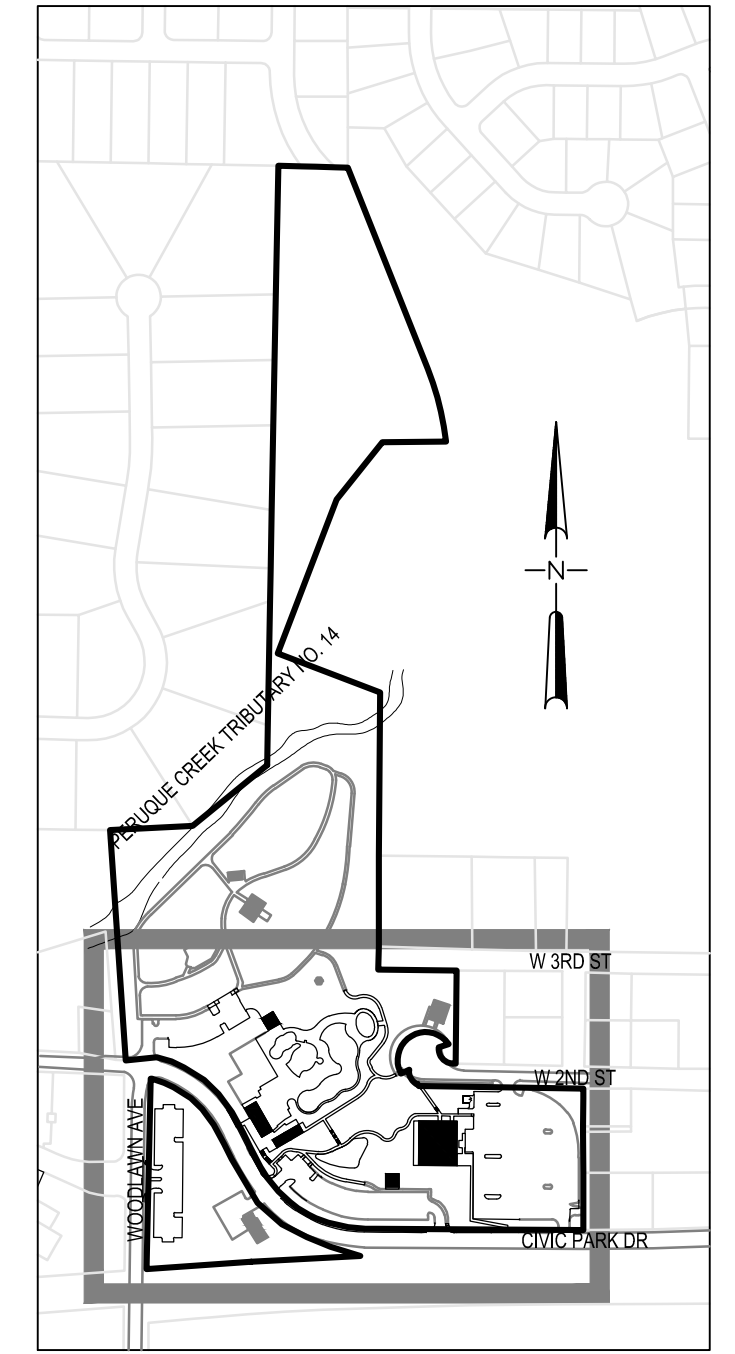
- BMP DESCRIPTION**
A. EROSION & SEDIMENT CONTROLS:
1. PROPERLY INSTALL AND MAINTAIN ALL STRUCTURAL PRACTICES.
 2. REMOVE SEDIMENT FROM TRAPS WHEN AT 50% CAPACITY.
 3. IF ANY SEDIMENT ESCAPES THE SITE, PROMPTLY REMOVE AND STABILIZE BEFORE THE NEXT RAINFALL EVENT - MAINTAIN CONTROLS TO LIMIT OFF-SITE TRANSPORT OF LITTER, CONSTRUCTION DEBRIS, AND MATERIALS.

SWPPP NOTES:

- SWPPP1. ***NOT USED***
 SWPPP2. ***NOT USED***
 SWPPP3. THE CONTRACTOR IS RESPONSIBLE FOR THE INSTALLATION AND MAINTENANCE OF THE EROSION AND SEDIMENT CONTROL MEASURES LOCATED ON THE PROJECT SITE.
 SWPPP4. THE CONTRACTOR WILL REFER TO DETAILS AND NOTES ON THE INSTALLATION AND MAINTENANCE OF THE CONTROL MEASURES.
 SWPPP5. EROSION CONTROL TO REMAIN IN PLACE UNTIL SOIL IS STABILIZED.
 SWPPP6. ANY DAMAGE, INCLUDING SURFACE SCARRING, TO THE EXISTING ACCESS DRIVES SHALL BE REPAIRED, REPLACED OR RE-CONSTRUCTED IN LIKENESS OR BETTER, AT THE CONTRACTOR'S EXPENSE.
 SWPPP7. ALL DISTURBED AREAS SHALL HAVE TEMPORARY SEEDING AND MULCHING. ALL AREAS THAT ARE PLANNED TO BE BARE FOR MORE THAN 14 DAYS SHALL BE SEEDED AND MULCHED WITHIN SEVEN (7) DAYS.
 SWPPP8. THE CONTRACTOR IS RESPONSIBLE FOR ENSURING THAT EROSION IS MINIMIZED AND THE COMPLIANCE WITH ALL APPLICABLE FEDERAL, STATE AND LOCAL LAWS, REGULATIONS AND ORDINANCES IS MAINTAINED THROUGHOUT THE EXECUTION OF THIS PROJECT.
 SWPPP9. INSPECTION SCHEDULE
 THE FOLLOWING SCHEDULE SHALL BE COMPLIED WITH THROUGHOUT CONSTRUCTION.
1. INSPECT ALL CONTROLS EVERY 14 CALENDAR DAYS AND WITHIN 24 HOURS OF A 0.5 INCH RAINFALL EVENT.
 2. MODIFY CONTROLS AS NECESSARY TO PREVENT POLLUTION. REVISIONS TO THIS PLAN SHALL BE COMPLETED WITHIN 7 CALENDAR DAYS OF THE INSPECTION.
 3. MAINTAIN A REPORT SUMMARIZING ACTIONS, DATES OF INSPECTIONS, PERSONNEL INVOLVED, LOCATIONS OF DISCHARGES, MODIFICATIONS, TO STRUCTURES, MEASURES, AND RESULTS.

- SWPPP10. RECORD KEEPING:
 THE FOLLOWING RECORDS MUST BE KEPT AND MADE AVAILABLE TO FEDERAL, STATE, AND LOCAL OFFICIALS:
1. DATES OF MAJOR GRADING ACTIVITIES
 2. DATES WHEN CONSTRUCTION ACTIVITIES TEMPORARILY OR PERMANENTLY CEASE
 3. DATES WHEN STABILIZATION MEASURES ARE INITIATED. BEGIN NO LATER THAN 14 DAYS AFTER A TEMPORARY OR PERMANENT CESSATION OF SITE WORK.

ANY LAND CLEARING, CONSTRUCTION, OR DEVELOPMENT INVOLVING THE MOVEMENT OF EARTH SHALL BE IN ACCORDANCE WITH THE STORM WATER POLLUTION PREVENTION PLAN, AND THE APPROVED STORM WATER POLLUTION PREVENTION PLAN AT THE SITE OF THE PERMITTED ACTIVITY.



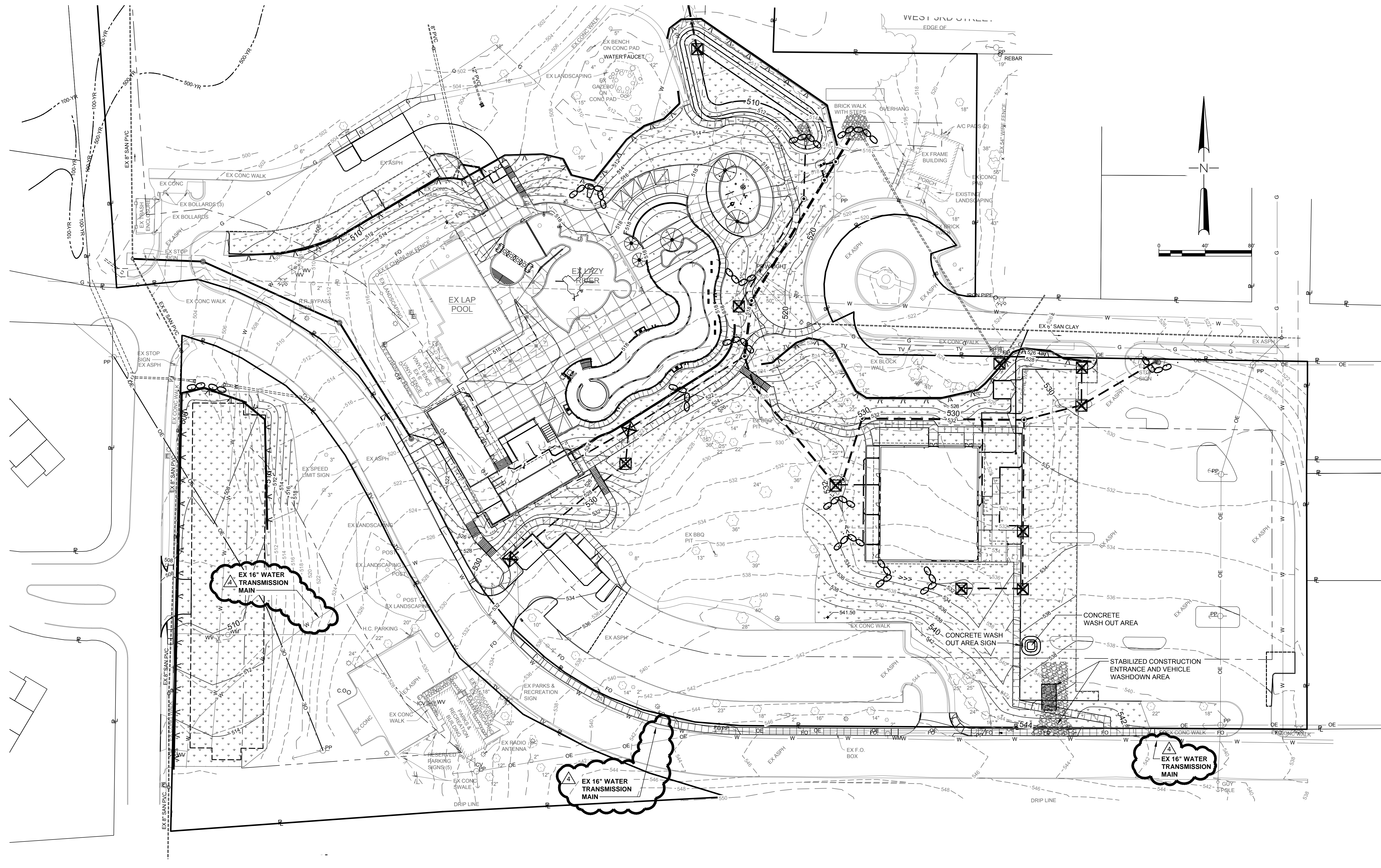
KEY MAP
(NOT TO SCALE)

sfs architecture
 2100 CENTRAL ST. SUITE 317, KANSAS CITY, MO 64108
 P: 816.454.1234 F: 816.454.1235 WWW.SFSARCH.COM

KdG
 Kuhlmann design Group, Inc.
 666 Progress Parkway - St. Louis, Missouri 63043
 P: 314.434.8898 F: 314.434.8280 - kdgrc.com

ANTHONY JAMES GIRONDO III
 PE-2017-11067
 MISSOURI PROFESSIONAL ENGINEER

D
C
B
A



SWPPP LEGEND

DESCRIPTION	SYMBOL
SILT FENCE. SEE DETAIL SHEET C5.05	[Symbol]
INLET PROTECTION - FABRIC DROP. SEE DETAIL SHEET C5.05	[Symbol]
FIBER ROLLS. SEE DETAIL SHEET C5.05	[Symbol]
VEHICLE WASHDOWN. SEE DETAIL SHEET C5.06	[Symbol]
STABILIZED CONSTRUCTION ENTRANCE. SEE DETAIL SHEET C5.06	[Symbol]
SEED/MULCH AREAS. SEE DETAIL SHEET C5.05	[Symbol]
ROCK OUTLET AREA. SEE DETAIL SHEET C5.05	[Symbol]

LEGEND

DESCRIPTION	EXISTING	NEW
PROPERTY LINE	[Symbol]	[Symbol]
COMMUNICATIONS CONDUIT OR CABLE (ABOVE/BELOW GRADE)	[Symbol]	[Symbol]
CABLE TV CONDUIT OR CABLE (ABOVE/BELOW GRADE)	[Symbol]	[Symbol]
ELECTRIC CONDUIT OR CABLE (ABOVE/BELOW GRADE)	[Symbol]	[Symbol]
GAS MAIN	[Symbol]	[Symbol]
UTILITY POLE (TYPE SPECIFIED)	[Symbol]	[Symbol]
GUY WIRE	[Symbol]	[Symbol]
UTILITY MANHOLE (TYPE SPECIFIED)	[Symbol]	[Symbol]
UTILITY ACCESS BOX (TYPE SPECIFIED)	[Symbol]	[Symbol]
STREET LIGHT	[Symbol]	[Symbol]
UTILITY METER (TYPE SPECIFIED)	[Symbol]	[Symbol]
UTILITY VALVE (TYPE SPECIFIED)	[Symbol]	[Symbol]
FIRE HYDRANT	[Symbol]	[Symbol]
STORM SEWER DESIGNATION	[Symbol]	[Symbol]
STORM SEWER (SIZE, TYPE, AND DIRECTION SPECIFIED)	[Symbol]	[Symbol]
STREET OR AREA INLET	[Symbol]	[Symbol]
GRADED INLET	[Symbol]	[Symbol]
STORM SEWER MANHOLE	[Symbol]	[Symbol]
FLAILED END SECTION	[Symbol]	[Symbol]
DRAINAGE V-DITCH	[Symbol]	[Symbol]
DRAINAGE FLAT BOTTOM DITCH	[Symbol]	[Symbol]
SANITARY SEWER DESIGNATION	[Symbol]	[Symbol]
SANITARY SEWER (SIZE, TYPE, AND DIRECTION SPECIFIED)	[Symbol]	[Symbol]
SANITARY SEWER MANHOLE	[Symbol]	[Symbol]
CHAIN LINK FENCE	[Symbol]	[Symbol]
STEEL OR ALUMINUM FENCE	[Symbol]	[Symbol]
WOOD OR VINYL FENCE	[Symbol]	[Symbol]
TREE (SIZE SPECIFIED)	[Symbol]	[Symbol]
BUSH (SIZE SPECIFIED)	[Symbol]	[Symbol]
FLAGPOLE	[Symbol]	[Symbol]
MAILBOX	[Symbol]	[Symbol]
STREET SIGN	[Symbol]	[Symbol]
UMBRELLA FRAME	[Symbol]	[Symbol]

CIVIC PARK IMPROVEMENTS

O'Fallon Parks and Rec
 Civic Park, O'Fallon,
 Missouri

MARK DATE DESCRIPTION
 [Symbol] 5/14/2017 ASI #1 - CITY COMMENTS

SFS PROJECT NO: 1682
 ISSUED FOR: CONSTRUCTION DOCUMENTS
 ISSUE DATE: 07/27/2017
 © 2017 SFS ARCHITECTURE

SWPPP PLAN
C5-01