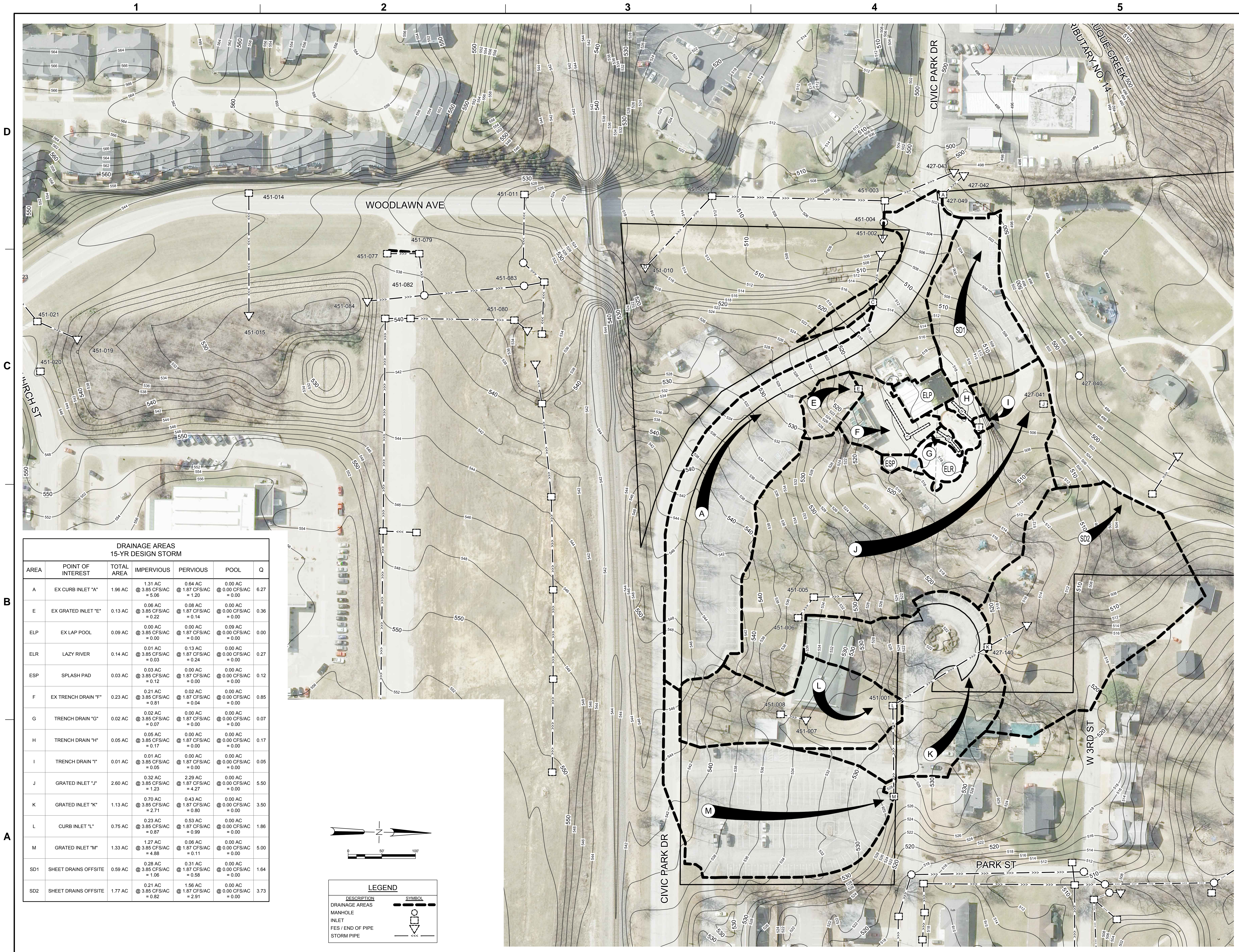


K:\O'FALLON\MO\MO160184_SFS OF FALLON CIVIC PARK\8 CAD\07 CIVIL\DRAINAGE\DRAINAGE AREA MAP.DWG
© 2017 1:50:48 PM



1 2 3 4 5

D

C

B

A

**DRAINAGE AREAS
15-YR DESIGN STORM**

AREA	POINT OF INTEREST	TOTAL AREA	IMPERVIOUS	PERVIOUS	POOL	Q
A	EX CURB INLET "A"	1.96 AC	1.31 AC @ 3.85 CFS/AC = 5.06	0.64 AC @ 1.87 CFS/AC = 1.20	0.00 AC @ 0.00 CFS/AC = 0.00	6.27
E	EX GRATED INLET "E"	0.13 AC	0.06 AC @ 3.85 CFS/AC = 0.22	0.08 AC @ 1.87 CFS/AC = 0.14	0.00 AC @ 0.00 CFS/AC = 0.00	0.36
ELP	EX LAP POOL	0.09 AC	0.00 AC @ 3.85 CFS/AC = 0.00	0.00 AC @ 1.87 CFS/AC = 0.00	0.09 AC @ 0.00 CFS/AC = 0.00	0.00
ELR	LAZY RIVER	0.14 AC	0.01 AC @ 3.85 CFS/AC = 0.03	0.13 AC @ 1.87 CFS/AC = 0.24	0.00 AC @ 0.00 CFS/AC = 0.00	0.27
ESP	SPLASH PAD	0.03 AC	0.03 AC @ 3.85 CFS/AC = 0.12	0.00 AC @ 1.87 CFS/AC = 0.00	0.00 AC @ 0.00 CFS/AC = 0.00	0.12
F	EX TRENCH DRAIN "F"	0.23 AC	0.21 AC @ 3.85 CFS/AC = 0.81	0.02 AC @ 1.87 CFS/AC = 0.04	0.00 AC @ 0.00 CFS/AC = 0.00	0.85
G	TRENCH DRAIN "G"	0.02 AC	0.02 AC @ 3.85 CFS/AC = 0.07	0.00 AC @ 1.87 CFS/AC = 0.00	0.00 AC @ 0.00 CFS/AC = 0.00	0.07
H	TRENCH DRAIN "H"	0.05 AC	0.05 AC @ 3.85 CFS/AC = 0.17	0.00 AC @ 1.87 CFS/AC = 0.00	0.00 AC @ 0.00 CFS/AC = 0.00	0.17
I	TRENCH DRAIN "I"	0.01 AC	0.01 AC @ 3.85 CFS/AC = 0.05	0.00 AC @ 1.87 CFS/AC = 0.00	0.00 AC @ 0.00 CFS/AC = 0.00	0.05
J	GRATED INLET "J"	2.60 AC	0.32 AC @ 3.85 CFS/AC = 1.23	2.29 AC @ 1.87 CFS/AC = 4.27	0.00 AC @ 0.00 CFS/AC = 0.00	5.50
K	GRATED INLET "K"	1.13 AC	0.70 AC @ 3.85 CFS/AC = 2.71	0.43 AC @ 1.87 CFS/AC = 0.80	0.00 AC @ 0.00 CFS/AC = 0.00	3.50
L	CURB INLET "L"	0.75 AC	0.23 AC @ 3.85 CFS/AC = 0.87	0.53 AC @ 1.87 CFS/AC = 0.99	0.00 AC @ 0.00 CFS/AC = 0.00	1.86
M	GRATED INLET "M"	1.33 AC	1.27 AC @ 3.85 CFS/AC = 4.88	0.06 AC @ 1.87 CFS/AC = 0.11	0.00 AC @ 0.00 CFS/AC = 0.00	5.00
SD1	SHEET DRAINS OFFSITE	0.59 AC	0.28 AC @ 3.85 CFS/AC = 1.06	0.31 AC @ 1.87 CFS/AC = 0.58	0.00 AC @ 0.00 CFS/AC = 0.00	1.64
SD2	SHEET DRAINS OFFSITE	1.77 AC	0.21 AC @ 3.85 CFS/AC = 0.82	1.56 AC @ 1.87 CFS/AC = 2.91	0.00 AC @ 0.00 CFS/AC = 0.00	3.73

LEGEND

DESCRIPTION	SYMBOL
DRAINAGE AREAS	
MANHOLE	
INLET	
FES / END OF PIPE	
STORM PIPE	

sfs architecture
2102 Central St. Suite 31, Kansas City, MO 64108
P: 816.452.1237 F: 816.452.1231 WWW.SFSARCH.COM

KdG
Kuhlmann design Group, Inc.
66 Progress Parkway, St. Louis, Missouri 63043
t: 314.434.8898 f: 314.434.8280 kdgin.com

STATE OF MISSOURI
ANTHONY JAMES GIRONDO III
PE-200431087
Professional Engineer
11/11/17

CIVIC PARK IMPROVEMENTS
O'Fallon Parks and Rec
Civic Park, O'Fallon,
Missouri

MARK	DATE	DESCRIPTION

SFS PROJECT NO: 16862
ISSUED FOR: CONSTRUCTION DOCUMENTS
ISSUE DATE: 07/27/2017
© 2017 SFS ARCHITECTURE

**EXISTING
DRAINAGE AREA
MAP**

C5-02